



Revisions

2	
3	
4	
5	
6	
7	
8	
9	

Grading Bar

#	
2	
3	
4	
5	
6	
7	
8	

First Floor Plan

Scale: 1' = 1/8"

A 1.1

2ND AVE

B

C

1
A 4.1

A

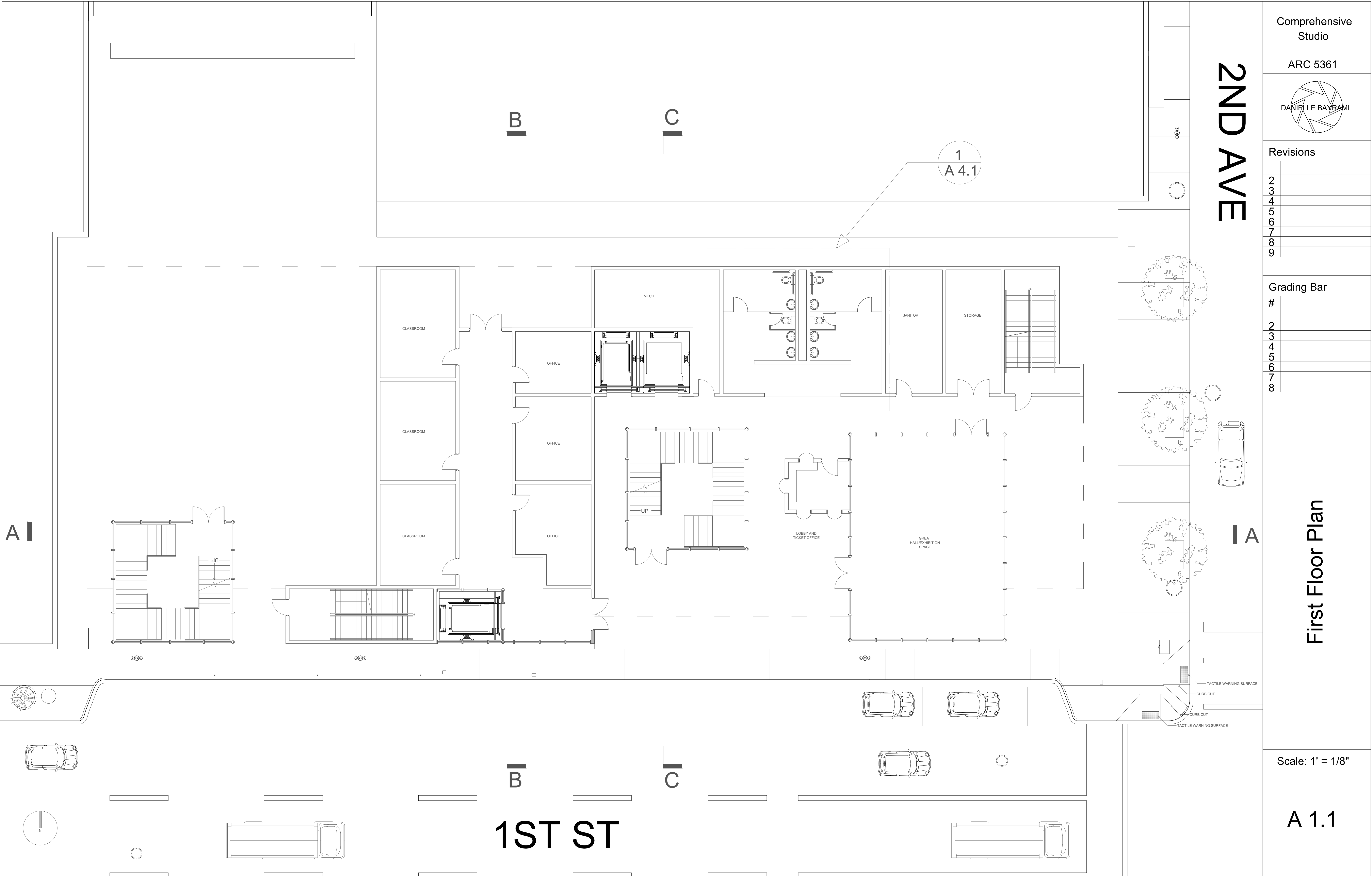
A

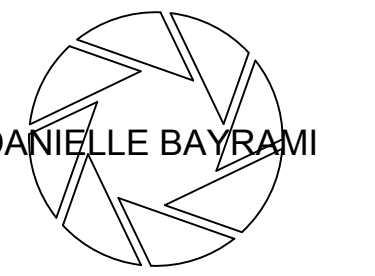
B

C

1ST ST

TACTILE WARNING SURFACE
CURB CUT
CURB CUT
TACTILE WARNING SURFACE





Revisions

1	
2	
3	
4	
5	
6	
7	
8	
9	

Grading Bar

#	
1	
2	
3	
4	
5	
6	
7	
8	

Second Floor Plan

Scale: 1' = 1/8"

A 1.2

A

B

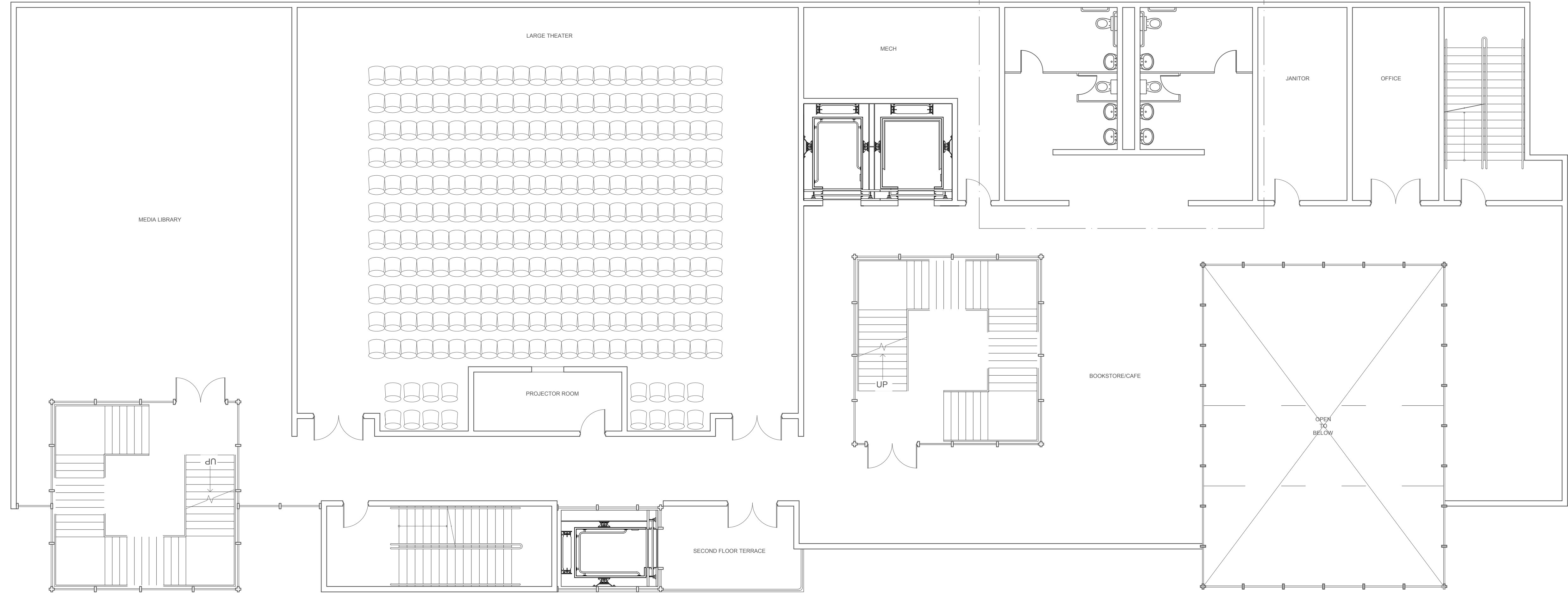
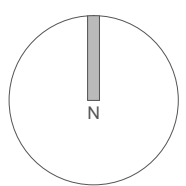
C

1
A 4.1

A

B

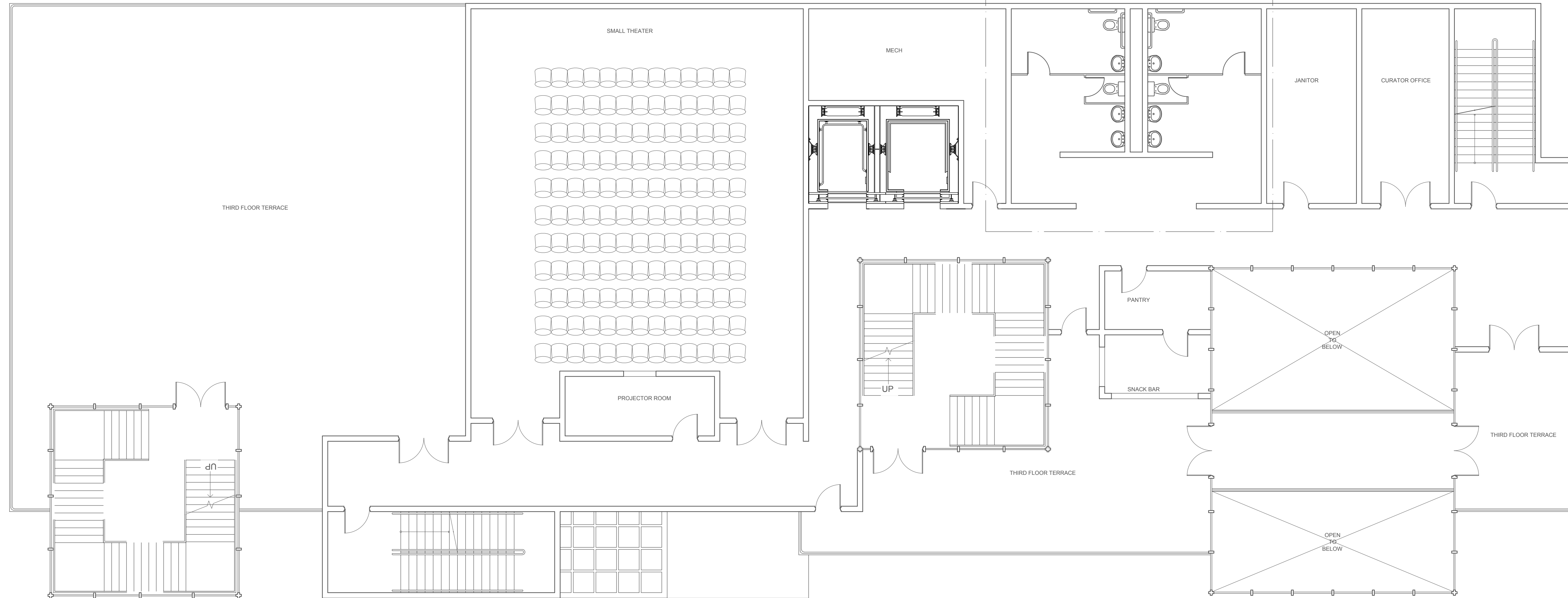
C



B

C

1
A 4.1

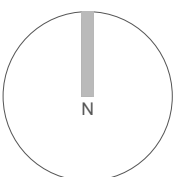


A

A

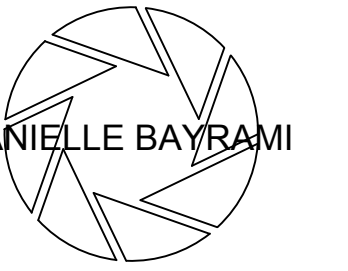
B

C



Comprehensive Studio

ARC 5361



Revisions

- 1
- 2
- 3
- 4
- 5
- 6
- 7
- 8
- 9

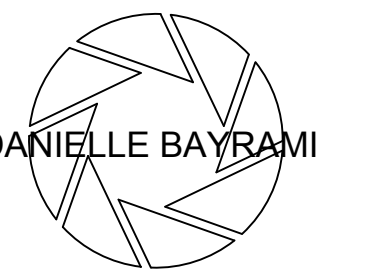
Grading Bar

- #
- 1
- 2
- 3
- 4
- 5
- 6
- 7
- 8

Third Floor Plan

Scale: 1' = 1/8"

A 1.3



Revisions

- 2
- 3
- 4
- 5
- 6
- 7
- 8
- 9

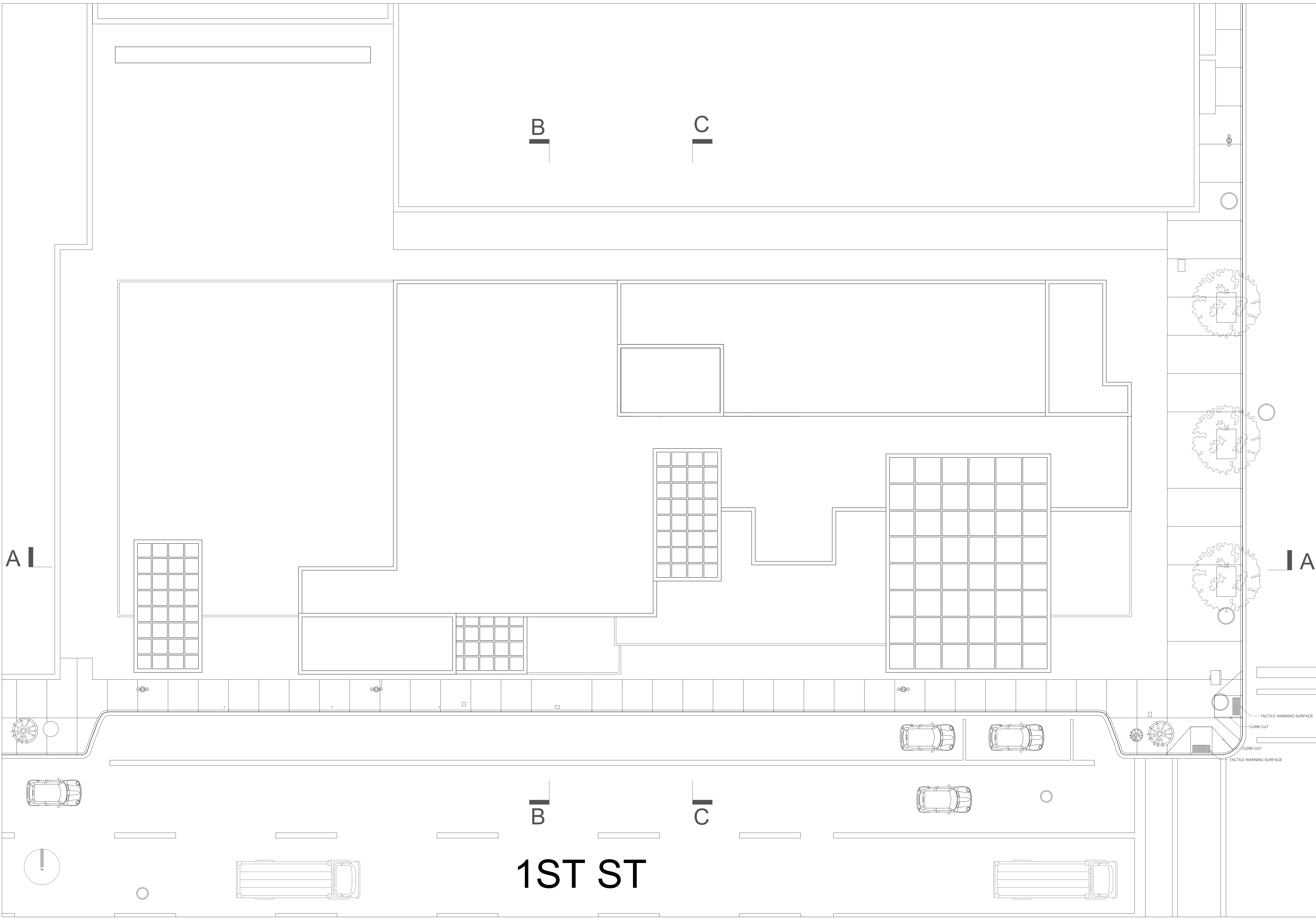
Grading Bar

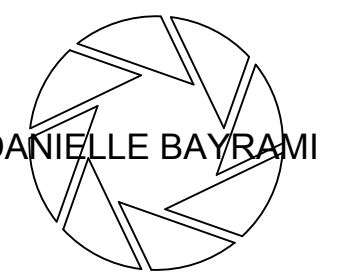
- | # |
|---|
| 2 |
| 3 |
| 4 |
| 5 |
| 6 |
| 7 |
| 8 |

Roof Plan

Scale: 1' = 1/8"

A 1.4





Revisions

- 1
- 2
- 3
- 4
- 5
- 6
- 7
- 8
- 9

Grading Bar

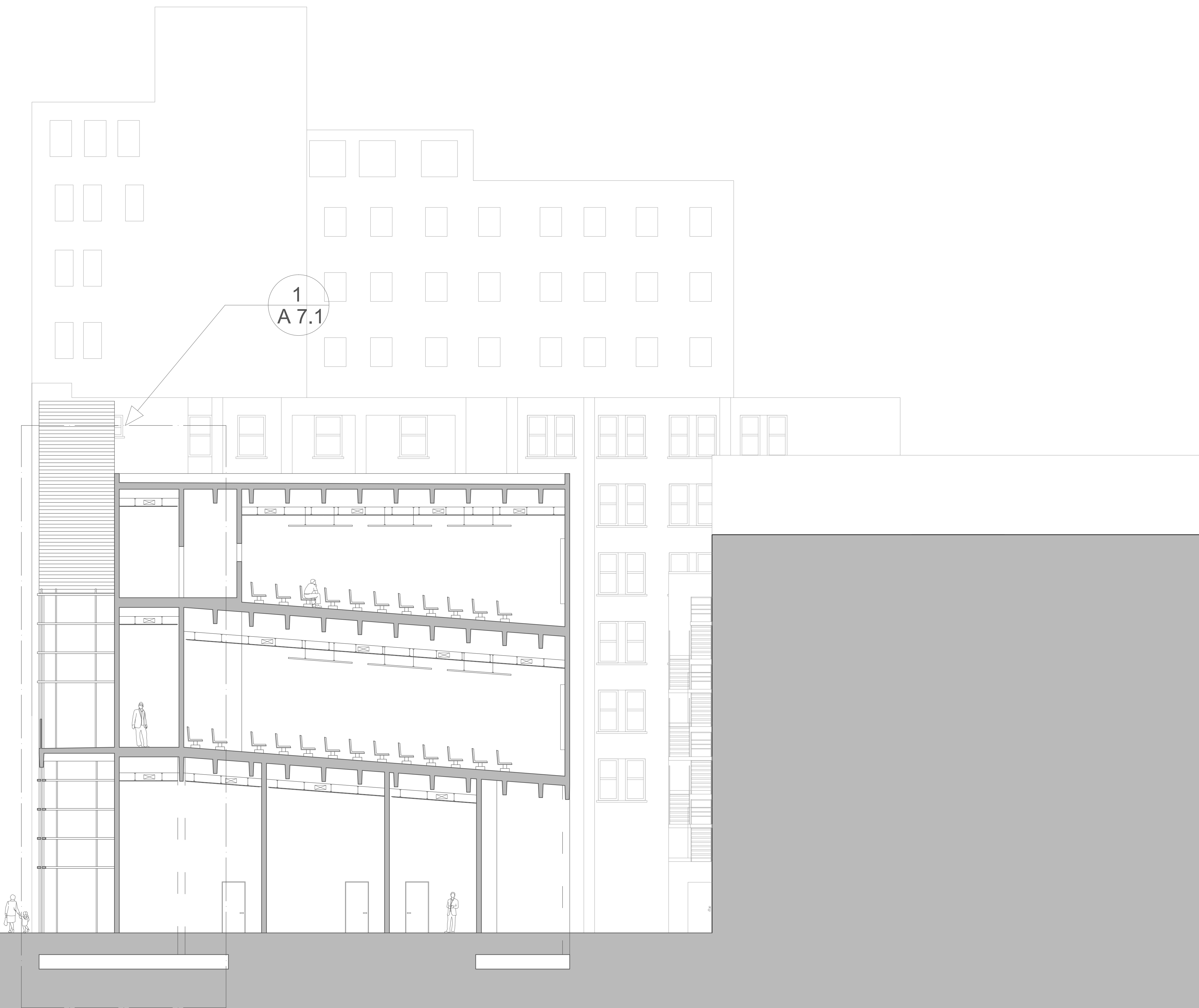
- #
- 1
- 2
- 3
- 4
- 5
- 6
- 7
- 8

Longitudinal Section A-A

Scale: 1' = 1/16"

A 2.5





1
A 7.1

Comprehensive
Studio

ARC 5361



Revisions

1	
2	
3	
4	
5	
6	
7	
8	
9	

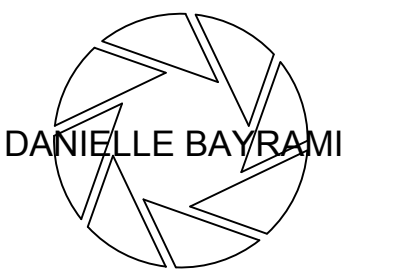
Grading Bar

#	
1	
2	
3	
4	
5	
6	
7	
8	

Cross Section B-B

Scale: 1' = 1/16"

A 2.3



Revisions

- 1
- 2
- 3
- 4
- 5
- 6
- 7
- 8
- 9

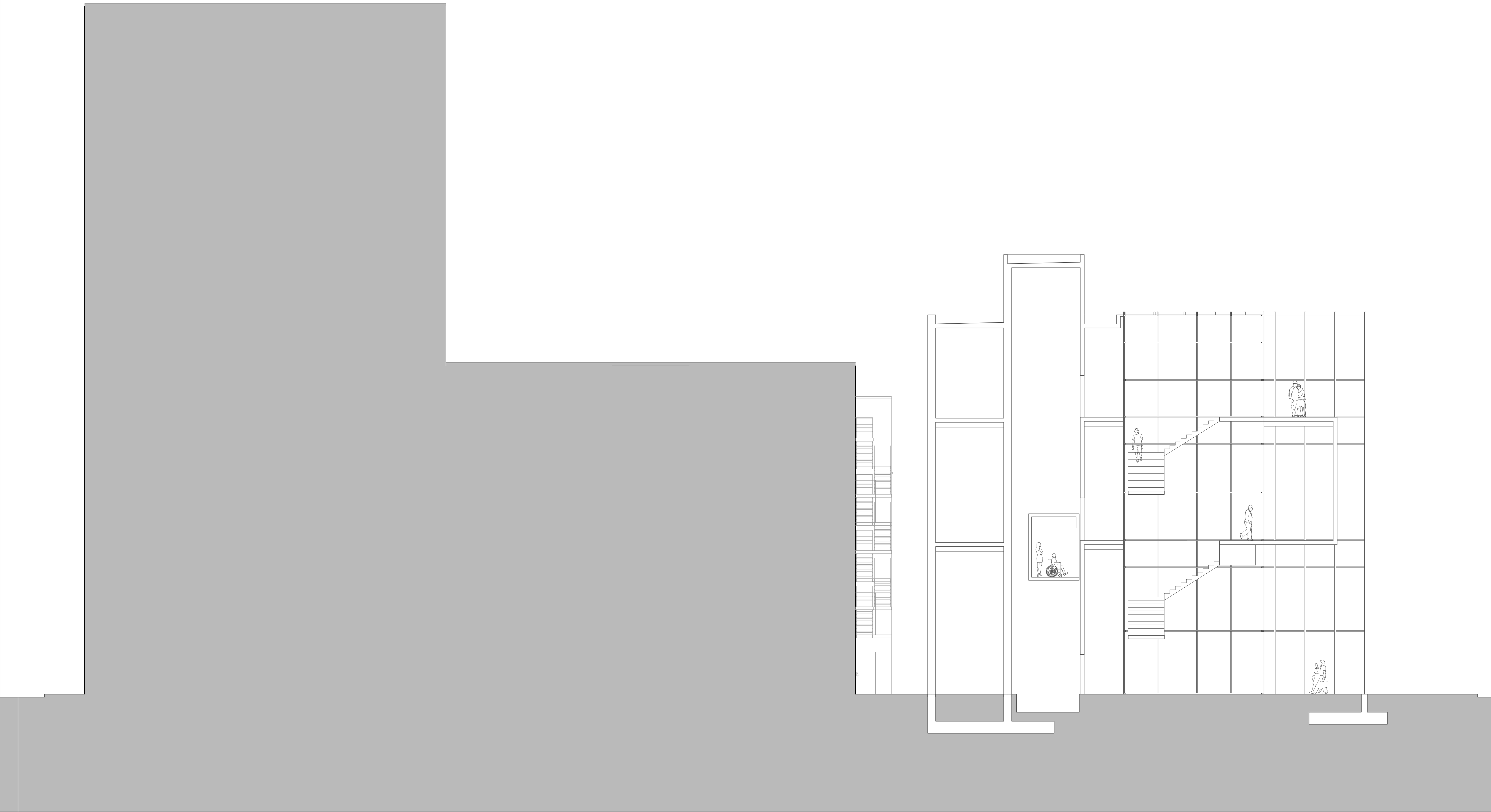
Grading Bar

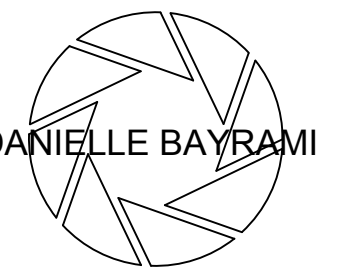
- #
- 1
- 2
- 3
- 4
- 5
- 6
- 7
- 8

Cross Section C-C

Scale: 1' = 1/16"

A 2.4





Revisions

- 1
- 2
- 3
- 4
- 5
- 6
- 7
- 8
- 9

Grading Bar

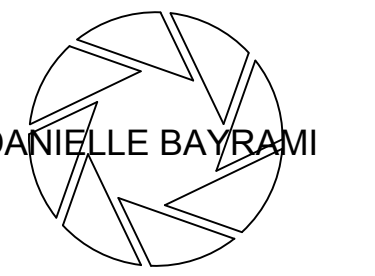
- #
- 1
- 2
- 3
- 4
- 5
- 6
- 7
- 8



South Elevation

Scale: 1' = 1/16"

A 2.1



Revisions

- 1
- 2
- 3
- 4
- 5
- 6
- 7
- 8
- 9

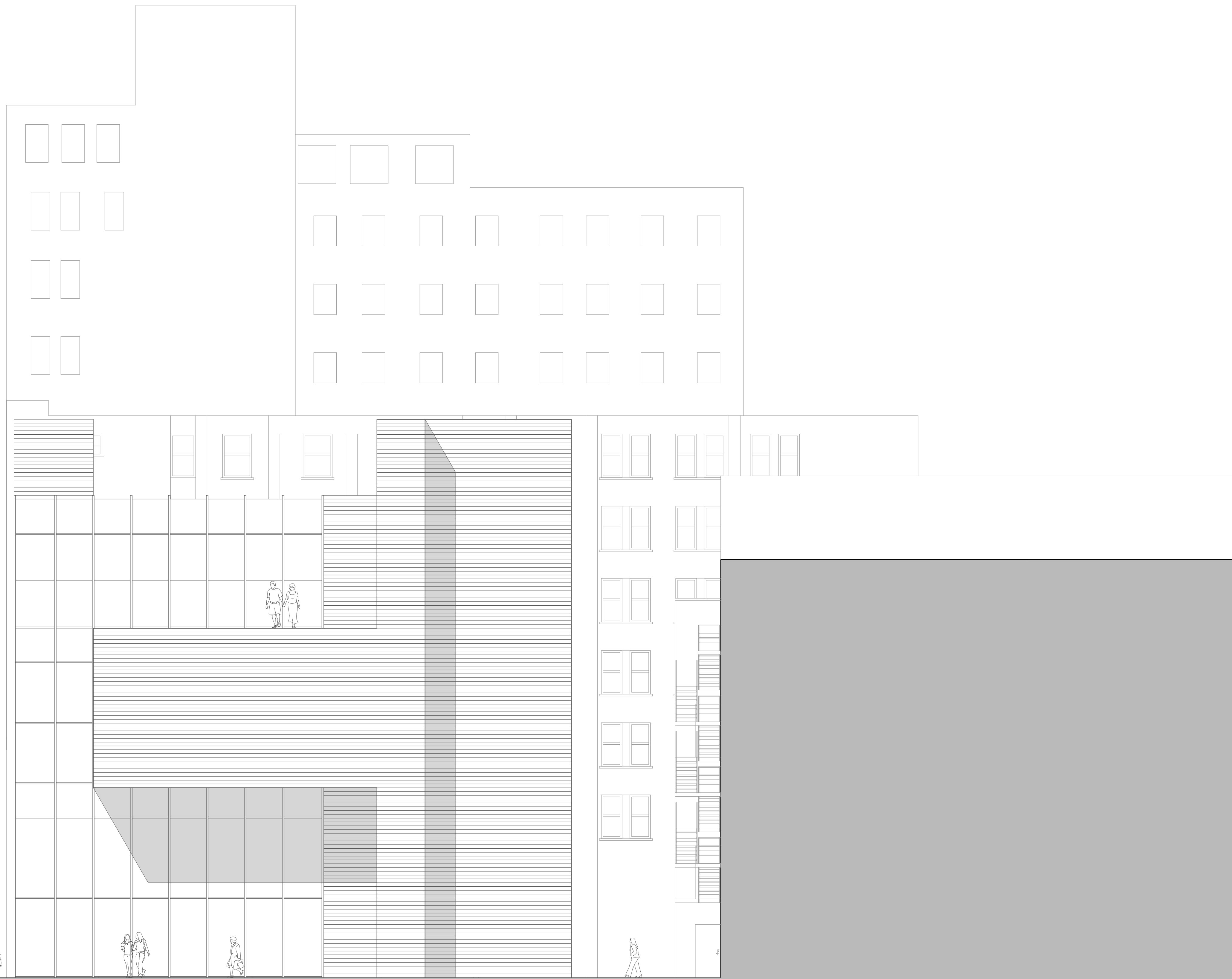
Grading Bar

- #
- 1
- 2
- 3
- 4
- 5
- 6
- 7
- 8

West Elevation

Scale: 1' = 1/16"

A 2.2





Revisions

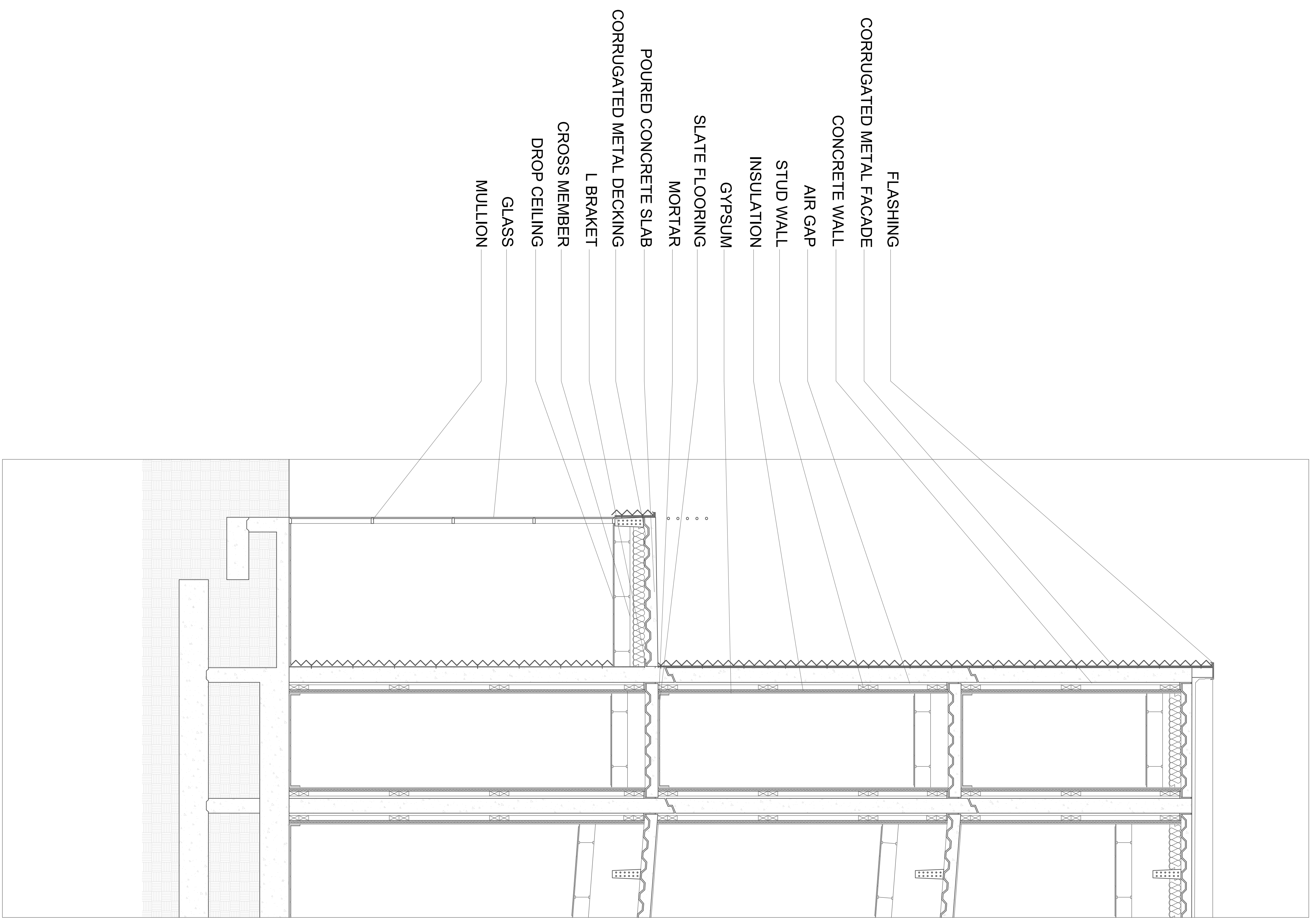
1	
2	
3	
4	
5	
6	
7	
8	
9	

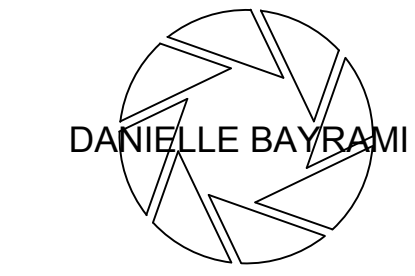
Grading Bar

#	
1	
2	
3	
4	
5	
6	
7	
8	

Wall Section Detail

A 3.1





Revisions

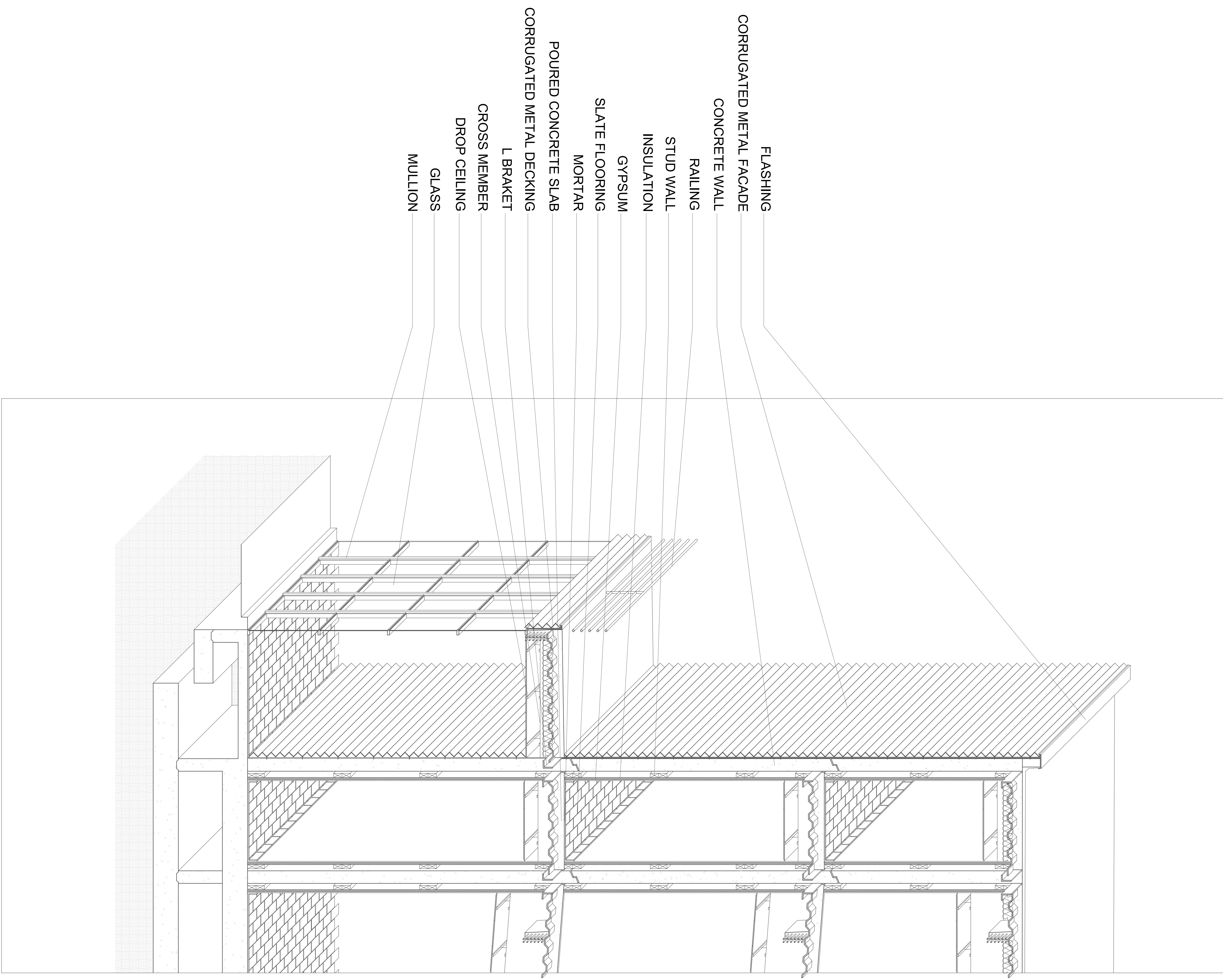
- 1
- 2
- 3
- 4
- 5
- 6
- 7
- 8
- 9

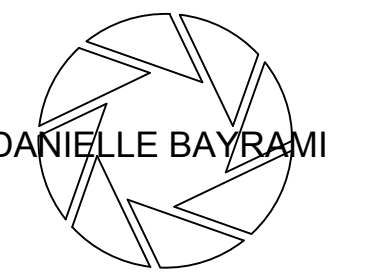
Grading Bar

- #
- 1
- 2
- 3
- 4
- 5
- 6
- 7
- 8

Wall Section Detail

A 3.2





Revisions

- 1
- 2
- 3
- 4
- 5
- 6
- 7
- 8
- 9

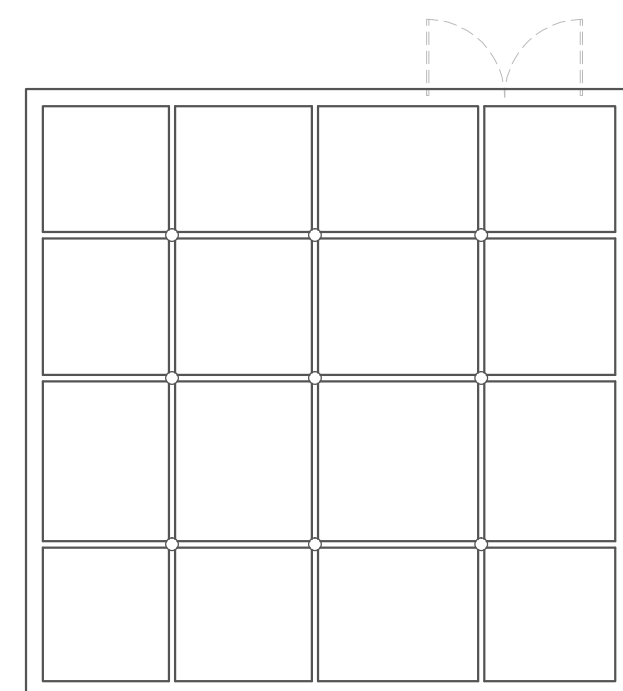
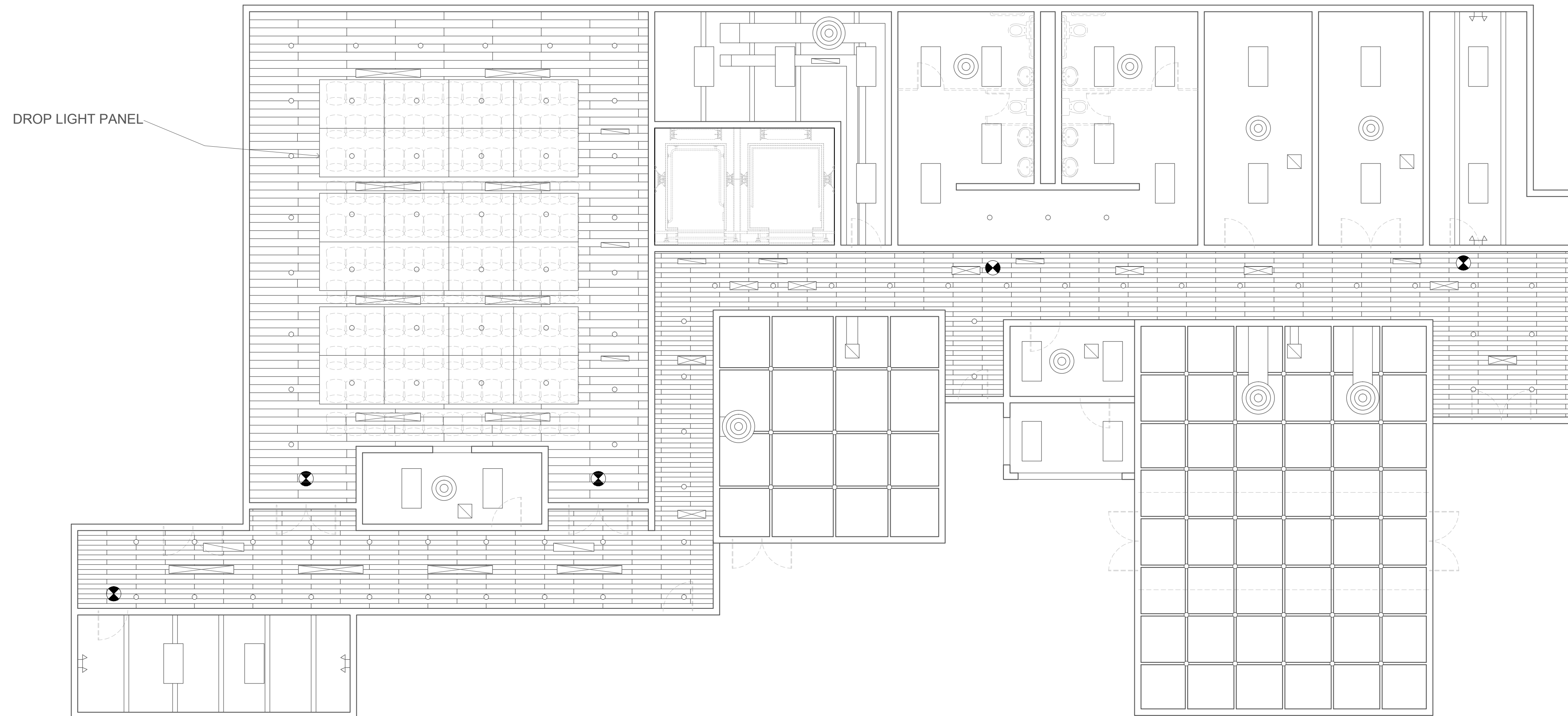
Grading Bar

- #
- 1
- 2
- 3
- 4
- 5
- 6
- 7
- 8

Reflected Ceiling Plan
Third Floor

Scale: 1' = 1/16"

A 4.2



LIGHTS	SUPPLY AC	RETURN	CEILING FINISH

