

# PLAYBILL

ON PITCH PERFORMING ARTS

#THEATRE MATTERS



## INTO THE WOODS

FIRST  
COMMUNITY  
BANK

Funded by  
Utah Legislature  
Utah Division of  
Arts & Museums

Rocky Mountain Power  
Foundation

Sylvan  
Learning<sup>sm</sup>

LINK  
EDUCATION  
LEAGUE

HOME<sup>2</sup>  
SUITES BY HILTON

Our Purpose...

# Building our Communities

As a local bank, we build our communities one dream at a time. When you open a checking account, you receive a **\$25 donation token** that can go towards a **bank-sponsored charity**.

**Bank Local**

🏦 Get your \$25 Donation token today!



## All the tools you need

Every new personal checking account includes...

- ✓ Free Standard VISA® Debit Card
- ✓ Free Mobile Banking
- ✓ Free Mobile Check Deposit
- ✓ Free Thank You \$25 Give
- ✓ Free Online Banking & Bill Pay
- ✓ Free eStatements with check images
- ✓ Free Check Images
- ✓ \$25 Buy Back of old checks/debit cards from another institution

## Bank-sponsored charities

We work with **16 different charities** in Utah. Check out our website **fcbutah.com** to learn more!

**Support Local**

🏦 Get your \$25 Donation token today!



# INTO THE WOODS

# CAST LIST



## MONDAY/FRIDAY

AVA JACKSON  
CAITLIN OLSEN

JOHN WRIGHT\*  
HEATHER ANN JACKSON  
CASSIE HURT-MCLARTY  
PRESTON FULLMER  
HARRIETT BAUER  
KJ WEIDNER  
JEN MORGAN  
LAURALYE ANDERSON  
GAGE ANDERSEN  
ANGIE PETTY  
TAYLOR BROWNLEE  
MIRANDA PAYNE  
DAN TATE  
SARA SHAW  
CHARLES SKROVAN  
ELISABETH SANCHEZ  
MADISON TATE

THE NARRATOR  
THE WITCH

THE BAKER  
THE BAKER'S WIFE  
CINDERELLA  
CINDERELLA'S PRINCE/WOLF  
RED RIDING HOOD  
JACK  
JACK'S MOTHER  
RAPUNZEL  
RAPUNZEL'S PRINCE/WOLF  
CINDERELLA'S STEP MOTHER  
LUCINDA  
FLORINDA  
MYSTERIOUS OLD MAN  
CINDERELLA'S MOTHER  
STEWARD  
GRANNY  
MIKLY WHITE

## THURSDAY/SATURDAY

TRINITY DAVIS  
ANNE POST FIFE  
DIEDRA WILLIAMS  
CHRIS MORGAN\*  
SHAWNDA MOSS  
EMMA ROBERTS  
LOGAN MORRILL  
ELIA DYE  
PETER DAVIS  
NATALIE SANDBERG  
CARIEL GOODWIN  
JACOB ROBERTS  
AMY SHAFFER  
MCKENNAH SCOTT  
ERIN DAWSON  
TYLER PROBASCO  
KATHERINE GAMMON  
JOSH RICE  
BREANNE SANDERS  
BROOKLYNN HIPWELL

\*SCHEDULE WILL NOT FOLLOW TRADITIONAL TUES/THURS OR MON/FRI



**LEGACY** ★  
**PEDIATRIC DENTISTRY**  
 DR. SCOTT FOLKMAN



3225 West Gordon Ave, Suite G; West Layton

**801.544.3400**

Call for an appointment today!



[www.legacypediatricdentistry.com](http://www.legacypediatricdentistry.com)

**A dentist your kids will be excited to go to!**

- ★ Awesome "outer-space" themed office & FUN kid-friendly staff
- ★ TV's above chairs streaming **NETFLIX** for kids
- ★ Specialist in infants, children, teens, special-needs children/adults
- ★ Full range of services, including sedation
- ★ Most insurance accepted, please call with questions
- ★ Check out our Reviews on **Google** & **facebook**.

**\*New Patient Gift**



**\$5 Gift Card**  
of your choice!

\*Must present this coupon on your first visit to receive gift card. Not valid with free Toddler Exam.

**No Insurance Special**

**\$79**

Includes exam,  
X-rays, cleaning,  
& fluoride.

Insurance will be billed, if available, maximum out-of-pocket.

**free toddler exam**  
for kids 2 & under



No out-of-pocket expense.  
Insurance will be billed, if available.



**LEGACY** ★  
**PEDIATRIC DENTISTRY**  
 DR. SCOTT FOLKMAN

**CELEBRATE THE MAGIC**

**TREASURE THE MEMORIES**



**CONTACT FOR A FREE NO OBLIGATION QUOTE!**

**ashleyramsey@d2travel.com  
760-994-5840**

***Destinations  
To Travel***

**WITH ASHLEY  
RAMSEY**



# ON PITCH PERFORMING ARTS PRESENTS:

# INTO THE WOODS

Music & Lyrics By:  
*Stephen Sondheim*

Book By:  
*James Lapine*

Originally Directed on Broadway by James Lapine  
Orchestrations by Jonathan Tunick

Original Broadway production by  
Heidi Landesman, Rocco Landesman, Rick Steiner, M. Anthony Fisher, Frederic H. Mayerson, Jujamcyn Theaters

Originally produced by the Old Globe Theater, San Diego, CA

## Direction

*Kristie Post Wallace*

Asst. Direction by:

*Alisha Green*

Stage Manager

*Madi Dial*

Music Direction by:

*Travis Clark*

Light Design

*Kace Barthlome*

Choreography by:

*Hunter Williams*

Costume Design

*Kennedy Miller*

Set Design

*Bailey Porter*

Props Design & Intamacy Coordination

*Anna Graff-Rice*

Sound Design

*Josh Rice*

Sound Board

*Kinney Tate*  
*Tess Macquire*

Set Paint/build

*Heather Poulsen*

Seamstress

*Quesley Ann Soto*

## OPPA! STAFF

Executive Director

*Brandon Stauffer*

Admin. Coordinator

*Leslie Barrett*

Education Director

*Ashley Ramsey*

Production Managment

*Kennedy Miller*

Costume Shop Manager

*Amanda Larsen*

Into the Woods Is presented through special arrangement with Music Theatre International (MTI). All authorized performance materials are also supplied by MTI. [www.mtishows.com](http://www.mtishows.com)

The videotaping or other video or audio recording of this production is strictly prohibited

Utah  
**REAL**  
Estate.homes

**MATT HAWKES**  
**REAL ESTATE**  
— 801.869.0268 —



**WE SOLD ANOTHER  
HOME IN YOUR AREA!**

**Visit**

***UtHomeValues.com***

**for your Home Value!**

*or scan QR code*



real  
REAL ESTATE LLC

# MUSICAL NUMBERS

## ACT 1

Prologue: "Into the Woods" . . . . .	COMPANY
"Cinderella at the Grave" . . . . .	CINDERELLA, CINDERELLA'S MOTHER
"Hello, Little Girl" . . . . .	WOLF, LITTLE RED RIDING HOOD
"I Guess This Is Goodbye" . . . . .	JACK
"Maybe They're Magic" . . . . .	BAKER'S WIFE, BAKER
"Our Little World" . . . . .	WITCH, RAPUNZEL
"Maybe They're Magic (Reprise)" . . . . .	BAKER
"I Know Things Now" . . . . .	LITTLE RED RIDING HOOD
"A Very Nice Prince" . . . . .	CINDERELLA, BAKER'S WIFE
"First Midnight" . . . . .	COMPANY
"Giants in the Sky" . . . . .	JACK
"Agony" . . . . .	CINDERELLA'S PRINCE, RAPUNZEL'S PRINCE
"A Very Nice Prince" (reprise) . . . . .	CINDERELLA, BAKER'S WIFE
"It Takes Two" . . . . .	BAKER'S WIFE, BAKER
"Second Midnight" . . . . .	COMPANY
"Stay With Me" . . . . .	WITCH, RAPUNZEL
"On the Steps of the Palace" . . . . .	CINDERELLA
Finale: "Ever After" . . . . .	COMPANY

## INTERMISSION

## ACT 2

Prologue: "So Happy" . . . . .	COMPANY
"Agony" (reprise) . . . . .	CINDERELLA'S PRINCE, RAPUNZEL'S PRINCE
"Witch's Lament" . . . . .	WITCH
"Any Moment" . . . . .	CINDERELLA'S PRINCE, BAKER'S WIFE
"Moments in the Woods" . . . . .	BAKER'S WIFE
"Your Fault" . . . . .	JACK, BAKER, LITTLE RED RIDING HOOD, WITCH, CINDERELLA
"Last Midnight" . . . . .	WITCH
"No More" . . . . .	BAKER, MYSTERIOUS MAN
"No One Is Alone" . . . . .	CINDERELLA, LITTLE RED RIDING HOOD, BAKER, JACK
Finale: "Children Will Listen" . . . . .	COMPANY





# DIRECTOR'S NOTE:

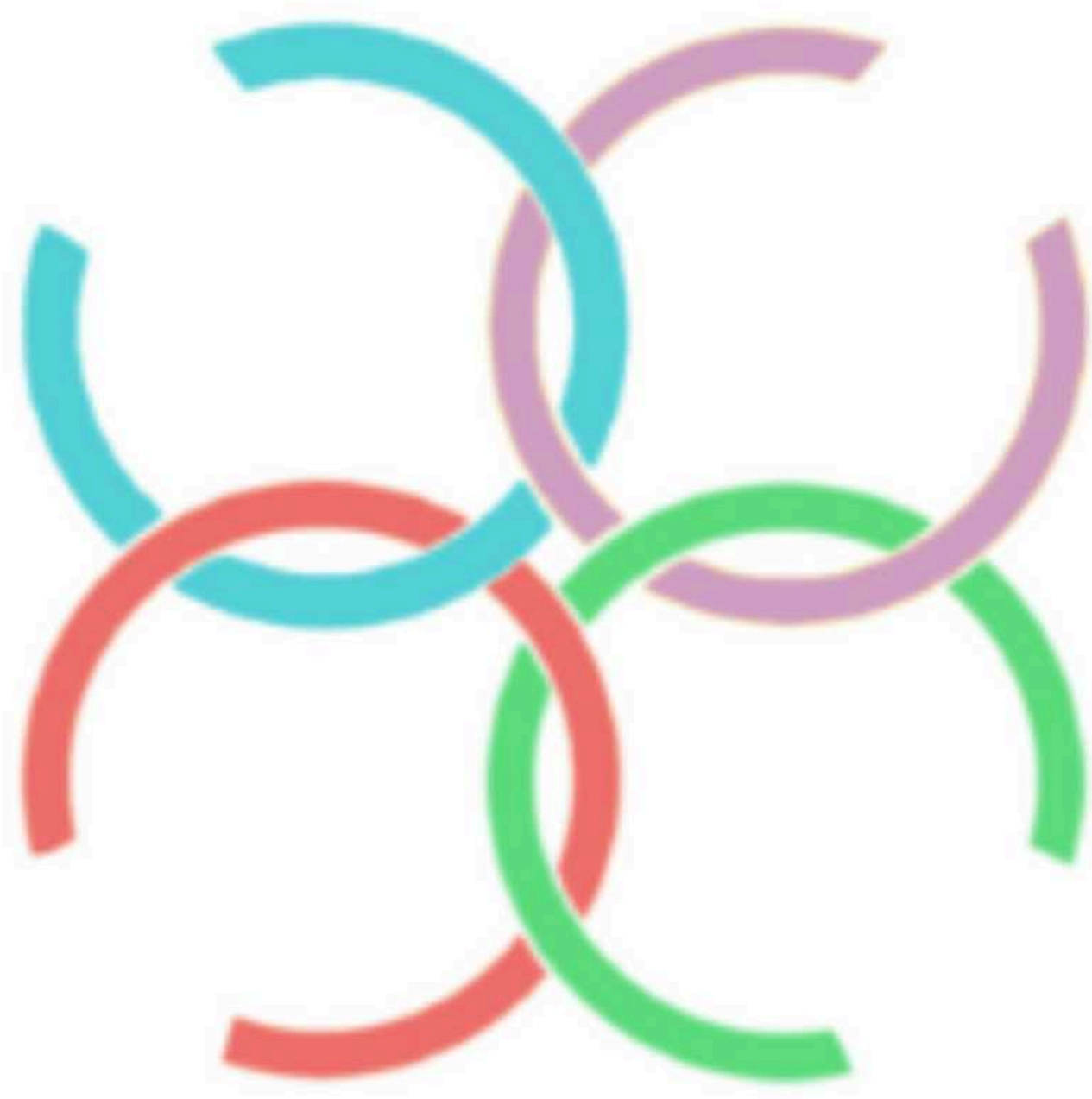
Into the Woods was the first professional musical I saw when I was a junior in high school. Played from a VHS recording of the original Broadway cast with Bernadette Peters as the witch, I was transfixed. What was this magic? What made me want to keep watching it and listening to it over and over? Ultimately, its magic lit a fire that would eventually lead me to teach theatre and now to make it my profession. Into the Woods is magical.

Now a quarter of a century since my first interaction with Sondheim and Lapine's masterpiece, I have so many questions about this thing we call life and this world. As I've contemplated my questions, Into the Woods began to carry a deeper meaning. I'm curious about why in our culture we pedestalize certain choices, certain women and men, certain relationships, certain norms. Why do we hate on a woman who has made the decision to be at home with her young children? Why do we shame a woman for choosing a career over being at home? What is it about the expectation that men and boys can't cry or care for each other or children the way women do? What makes one wish more desirable than others? What about single parents or non-traditional family structures? Why do we "other" people who are different from us in any way? I saw all of these themes and more as I interacted with this script as now a woman of a certain age myself.

With all of these questions in mind, the setting of our production is the wooded outskirts of an urban location in the 1950s. I chose this time period to heighten the themes mentioned above and add a layer on to the classic story; the story hasn't changed, the container did. This is something rarely if ever done with this musical, and there may be many of you in the audience who are, in a sense, traditionalists. I hope my unconventional concept will spark new ideas for you, ignite questions comparing these old folk and fairy tales to our own day, and illuminate conversations about how we can understand and support one another regardless of gender, age, creed, or wish.

Thank you for supporting OPPA! and this production. Welcome into our woods.

*Kristie Post Wallace*



# LINK EDUCATION LEAGUE

Helping students become:

CREATIVE

COLLABORATIVE

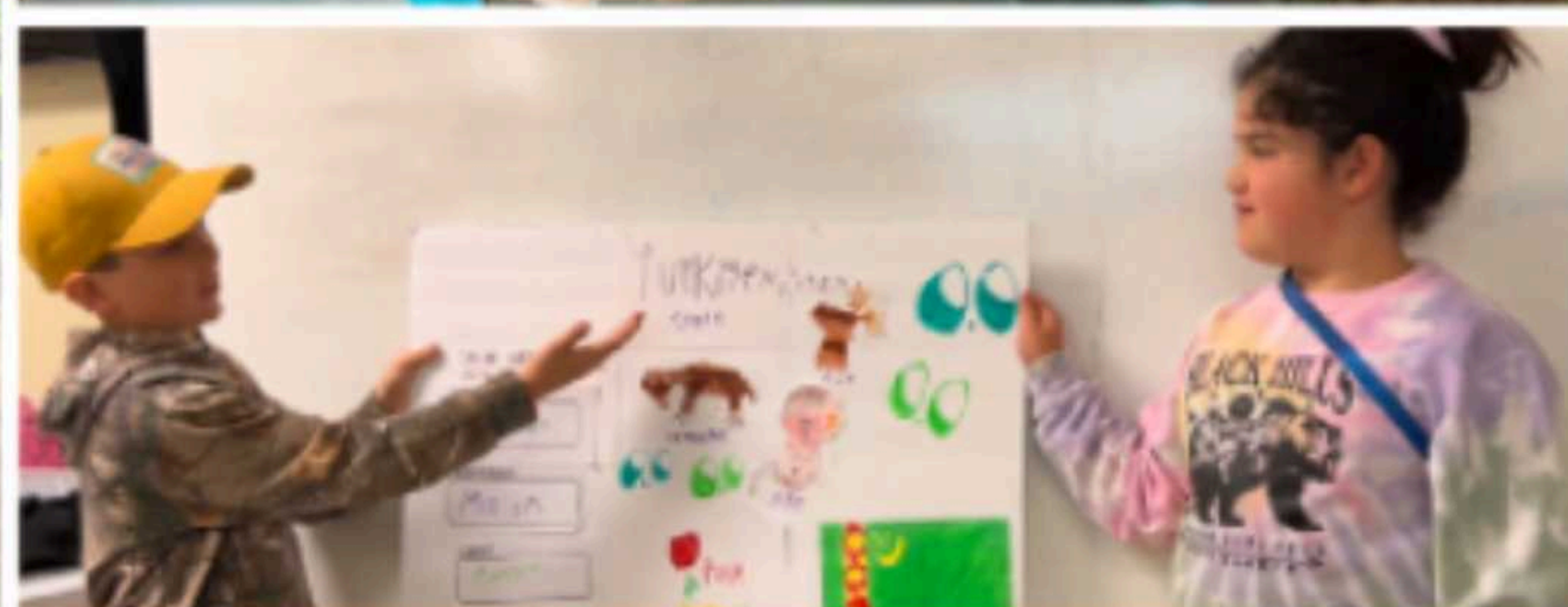
COMPASSIONATE

CRITICAL THINKERS

What does learning at Link Education League look like?

Scan the QR code to see it in action!

LEARN MORE & APPLY AT [LINKEDUCATIONLEAGUE.COM](http://LINKEDUCATIONLEAGUE.COM)



EDUCATION  
FOR THEIR FUTURE  
NOT OUR PAST

NOW ENROLLING!

# THE SPONGEBOB MUSICAL YOUTH EDITION

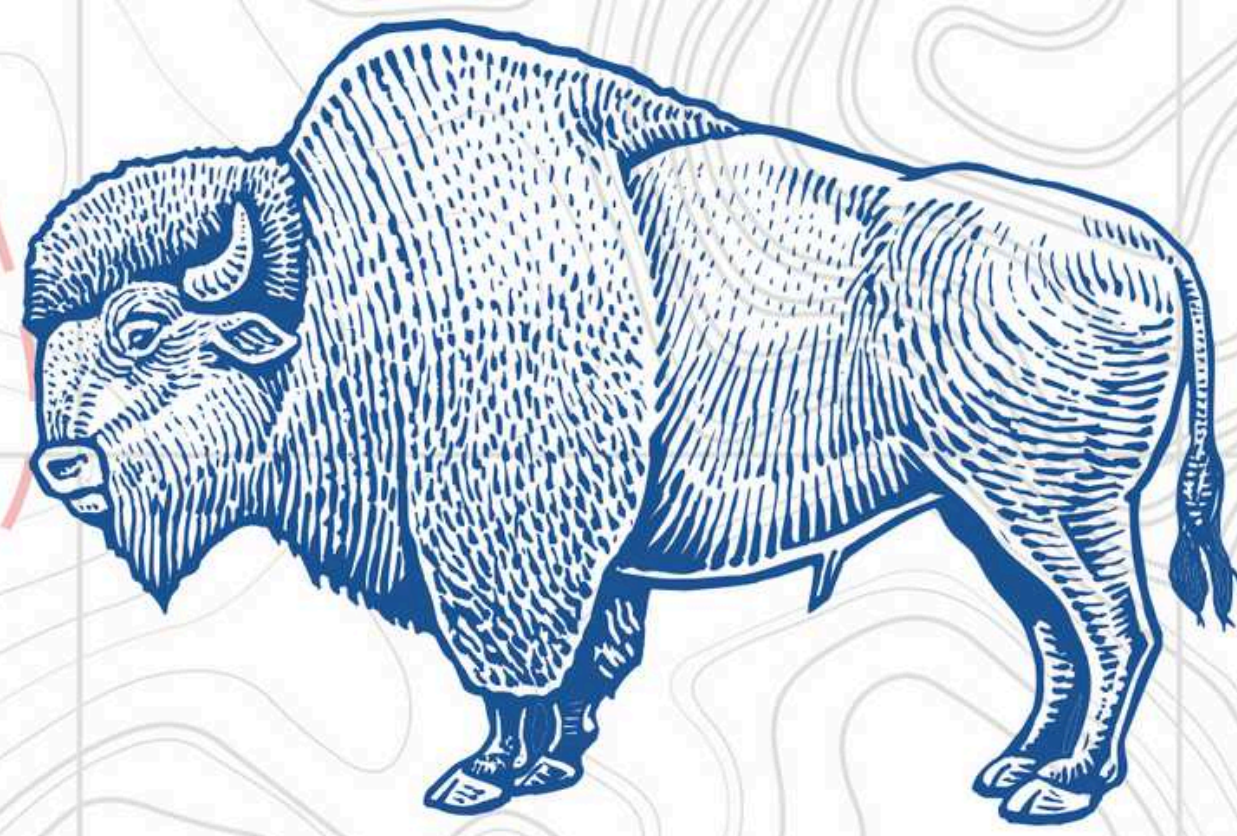




# RED, WHITE AND TUNA

*OPPA!*  
On Pitch Performing Arts

Creator's Stage **JUNE 29 – JULY 14, 2024**



## **FOUND IN DAVIS COUNTY**

**Intermountain expertise with Davis County convenience is now available right in your backyard.**

**Layton Hospital provides a comprehensive complement of services, including:**

### **EMERGENCY**

Trauma Level III  
Stroke Receiving Center  
Observation Unit  
TeleHealth Integration  
Accelerated Care Model

### **WOMEN'S HEALTH**

Labor & Delivery  
Simply Birth  
NICU  
Outpatient Lactation  
24/7 Laborist Coverage

### **SURGICAL**

Robot Assisted Surgeries  
Orthopedics  
General Surgery  
Same Day/Endo/GI  
GYN Surgeries

To learn more about our services or find a provider, visit  
*[LaytonHospital.org](http://LaytonHospital.org)*



**Intermountain<sup>®</sup>  
Layton Hospital**



# HOME 2 SUITES LAYTON

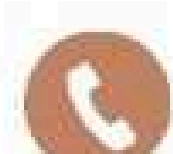
803 Heritage Park Blvd  
Layton, UT 84041

## OUR HOTEL FACILITIES

---

- ✓ Extended Stay Hotel
  - ✓ Swimming pool
  - ✓ Kitchenettes
  - ✓ 24 Hour Fitness Room
  - ✓ Outdoor BBQ Grills
  - ✓ Much More
- 

CONTACT US

 801-820-9222

# KEEP MOVING FORWARD with Sylvan!



## SYLVAN HAS EXACTLY WHAT YOU NEED

More than 7 million parents have trusted Sylvan to deliver results. No matter what your family's needs are, we have solutions to help. And we've adapted to the new ways kids are learning.

### IN CENTER TUTORING

Personalized support from our great teachers!

- Get personalized attention with in person, face-to-face sessions
- Get guided support that is personalized to your child.
- Work on skill gaps
- Get ahead and master new skills

Mention "OPPA"  
for a 20%  
discount

### Online Classes

Same great teachers, from the comfort of your home.

- Teachers lead live, small group classes ( 1 Teacher to 2 students)
- Skills and confidence growth to be ready for the next school year
- Interactive and fun activities to keep kids engaged and spark a love of learning

Classes start with a monthly as low as **\$299/mo.**

### Homework Support

Valid only at Sylvan Learning of Layton or Bountiful

Core 4 ( up to 4 hrs. a month)  
Basic 8 ( up to 8 hrs. a month)  
Super 16 ( up to 16 hrs. a month)

Monthly packages starting @  
**\$200 a month**

### Sylvan of Layton

575 N Main Street

**801-543-4400**

layton.ut@sylvanlearning.com

### Sylvan of Bountiful

845 S Main Street Ste. B5

**801-543-4400**

Layton.ut@sylvanlearning.com

# Our exclusive Creators Club

## **PATRON:**

Amanda Larsen

Amy Shaffer

Danielle Bendinelli

Dave Green

Michelle Green

Eric Ludlow

Glenda & Rob Smith

Heather Ann Jackson

Joshua Rice

Kelly Silvester

Leslie Barrett

Mandie Harris

Teresa Howell

Jeff Duncan

## **SUPPORTER:**

Anne Jones

Ashley Ramsey

Terry Davis

Caitlin Olsen

Chelsea Morris

Matt Higgins

Natalee Stuart

Sommer Ellsworth

Tyler Neil

Anonymous

## **ADMIRER:**

Chris & Jen Morgan

## **ENTHUSIAST:**

Rachel Helwig

Dan Tate

Creator Club Members are our most passionate supporters, and their monthly giving ensures that our mission will continue.

The support we receive from the Creators Club allows us to create children's theatre, community theatre, produce new works, and expand the arts in our community.

Select perks may include: Priority performance seating, Exclusive Creator Club events, Advance ticketing opportunities, Autographed cast memorable, gift shop discounts and VIP invitations.

All club members receive complimentary access to select performances of shows in our Creator's Stage series.

**OPPA!**  
On Pitch Performing Arts

**Thank You is never enough.**



# CAST AND CREW

*Amy Shaffer*  
(Stepmother - Th/S Cast)



Amy is so excited to be a part of this show! When not at the theatre she stays busy raising her 3 sons. Love to her supportive friends and family!

*Angie Petty*  
(Stepmother - M/F Cast)



Angie is so excited for this opportunity to be in this fantastic show! A choir teacher by day, Angie's last OPPA production was music directing "The Hunchback of Notre Dame". She has done shows at Terrace Plaza Playhouse, Centerpoint Legacy Theatre, and this is her second production as an actor at OPPA. A special shout-out to her shenanigan- supporting husband and her hooligan kiddos.

*Anne Post Fife*  
(Witch - Th/S Cast)



Anne is thrilled to become The Witch! Anne is so excited to perform in American Sign Language in the musical! She has recently completed her B.A. in Theatre Studies with minor in Deaf Studies at Utah Valley University! She performed numerous plays at UVU the past few years, most notable as The Nurse for "Romeo & Juliet" in 2022. She also directed few plays, most recently co-directed "The Hunchback of Notre Dame" in both ASL and English. Anne cannot wait to share her love of the language with the audience! She is grateful for her husband Michael and her amazing family for their tremendous support in her theatre endeavors! Be ready to be bewitched!!

*Breanne Sanders*  
(Granny - Th/S Cast)



Breanne had a brief existential crisis at being cast as Granny at age 31, but now that she's over it, she is excited to share the experience of this show with you! Sondheim is her favorite composer and she loves the lessons learned in Into The Woods, especially the truth that no one is alone. Past shows at OPPA include Little Women and Legally Blonde. Breanne is also an OPPA Player and enjoys the opportunity to perform with them and help the community. When she's not on stage or teaching voice lessons, she spends time reading, writing, and snuggling the two best dogs in the world.

*Brooklynn Hipwell*  
(Milky White - Th/S Cast)



Brooklynn Hipwell is a Jr. High student and has been doing theater at OPPA for almost 4 years now! This is her first main stage production! She also enjoys grazing in open pastures...Moooo!

*Caitlin Olsen*  
(Witch - M/F Cast)



Caitlin is incredibly excited to have the opportunity to bring The Witch to life in this brilliant production of Into The Woods. Caitlin would like to thank the production team, her friends, her family, most especially her husband and three boys for their constant and patient love and support. And you! Without the support of community members like you, the Arts would be a very sad place. Some of Caitlin's favorite roles include Emma Carew in Jekyll and Hyde, Elle Woods in Legally Blonde and Betty Jean in The Winter Wonderettes. "Thank you for coming and enjoy the show!"

*Cariel Goodwin*  
(Rapunzel Th/S Cast)



Cariel is stoked to be playing Rapunzel again in this production! She loves all things princesses, even when the stories are a little bit darker, and all things musical theatre. She has been performing for almost 20 years now and still can't get enough! Enjoy the show!

# CAST AND CREW

*Cassie Hurt-McLarty  
(Cinderella - M/F Cast)*



Cassie Hurt-McLarty is a preschool and voice teacher who studied Vocal Performance and Education at Westminster College. She is also the current director of Empress Youth Theatre. Her recent credits include Mrs. Lovett in Sweeney Todd, Marie in Cinderella, April in Company, Maggie in A Chorus Line, Wardrobe in Beauty and the Beast, and Alice in Sherlock. She would like to thank her parents for their love and support.

*Charles Skrovan  
(Steward - M/F Cast)*



A budding thespian, this is Charles' first play. He has a passion for music, writing and producing songs as a hobby in his home studio. He was coaxed into auditioning with his daughter and his fiance as they were also trying out for the play.

*Chris Morgan  
(Baker - Th/S Cast)*



Chris is a giant nerd who loves singing, acting, sports, and being active in the community. When not performing on stage you'll find Chris working on home projects, playing with his kids, singing karaoke with his family while chauffeuring them to their activities, and enjoying music with his amazing wife Jen.

*Dan Tate  
(Mysterious Man - M/F  
Cast)*



Dan has been in multiple shows and love what theatre does for it's participants, audience members and community as a whole.

*Diedra J Williams  
(Witch - Th/S Cast)*



This is Dede's third time being in Into the Woods and also her third production at OPPA. She's thrilled to be a part of this production. Her favorite roles have been Lola in Damn Yankees and Amneris in Aida. Dede owns a dance studio, D for Danze, and has choreographed over 3 dozen theater productions. She's happy to have the support of her husband, children, and twin fainting goats.

*Elia Dye  
(Little Red - Th/S Cast)*



Elia is so excited and deeply grateful to be playing Little Red in OPPA's Into The Woods! Recently, she could be found playing Florika in OPPA's The Hunchback of Notre Dame, Smee in OPPA's Peter and the Starcatcher, and ensemble in OPPA's Jekyll and Hyde where she met her partner (Hiiii Austin!! Shout out to OPPA for playing match maker). Theatre is Elia's happy place and she is just so stoked to create something beautiful with some wonderful friends!

*Elli Sanchez  
(Granny - M/F Cast)*



Meet Elli Sanchez, a drama teacher with a deep passion for performing arts. She has been passionate about performing, whether in elementary school plays, community theater in high school, or even taking drama electives in college. Elli is also an accomplished musician, participating in multiple choirs throughout her high school career. Now, she dedicates herself to inspiring a new generation of performers by sharing her skills and passion in both theater and music.

# CAST AND CREW

*Emma Roberts*  
*(Cinderella - Th/S Cast)*



Emma is thrilled to be playing a dream role in a dream show, sharing the stage with her husband Jacob! Recent favorite credits include "Sleepy Hollow" (Katrina Van Tassel) at West Valley Arts, "Matilda" (Miss Honey) at CenterPoint Legacy Theatre + Cottonwood Heights Arts Council, and "The 25th Annual Putnam County Spelling Bee" (Olive Ostrovsky) at Sandy Arts Guild.

*Erin Dawson*  
*(Florinda - Th/S Cast)*



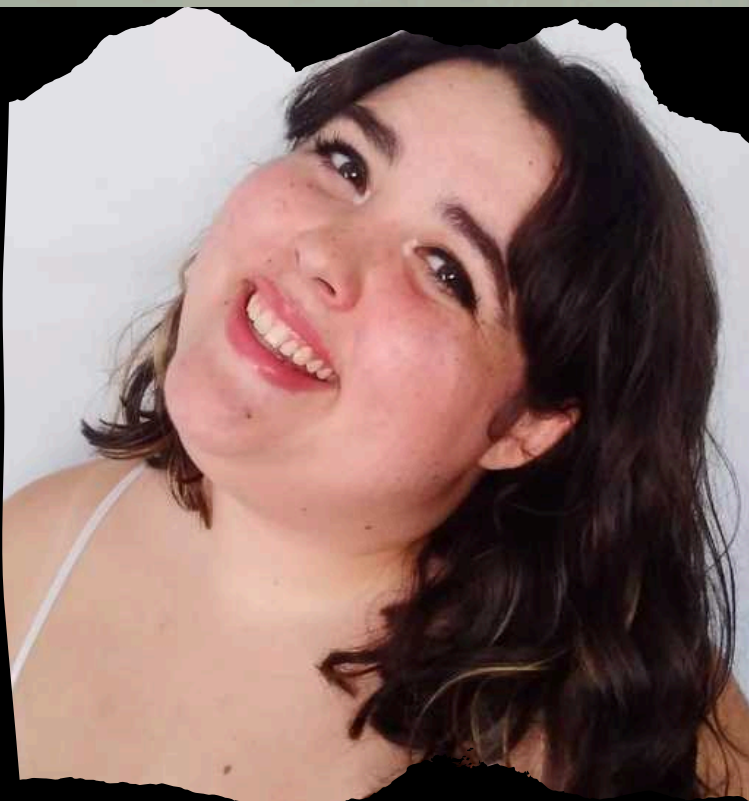
Erin is excited to be a part of "Into the Woods"! She has done theatre since she was 9 years old and has loved it ever since. Erin's favorite roles has included Cinderella in "Cinderella", Pocahontas in "Disenchanted", and Hannah in "Freaky Friday".

*Gage Anderson*  
*(Rapunzel's Prince - M/F Cast)*



Gage is ready to perform for y'all, you might of seen him in Hunchback, he's new to community shows but more than excited to make you laugh and cry

*Harriett Bauer*  
*(Little Red - M/F Cast)*



Harriett is so excited to be in this production of Into the Woods! Her other favorite roles she's played are Ellie in Freaky Friday, Bebe in A Chorus Line, and Margot in Legally Blonde. She would like to thank anyone whose ever supported her theatre endeavors and also remind them that her favorite snack is chocolate covered pretzels or a diet coke!

*Heather Ann Jackson*  
*(Witch - M/F Cast)*



Heather is delighted to be back onstage in OPPA!'s production of Into the Woods. Favorite past roles include Lucy Harris in Jekyll & Hyde, Babette in Beauty and the Beast, and Jo March in Little Women. When she's not at the theater, Heather moonlights as a high school teacher and young adult author. She wants to thank her friends and family for their support, especially her husband, Philip, and their children.

*Jacob Roberts*  
*(Rapunzel's Prince - Th/S Cast)*



Jacob has 4 chickens, 2 dogs, and 1 wife. One of them is "Cinderella" on stage tonight! You may have seen Jacob as "Cup" in Beauty and the Beast (2006). Jacob is very grateful for the opportunity to perform at OPPA and wishes you a happily ever after.

*Jen Morgan*  
*(Jack's Mother - M/F Cast)*



Jen has been involved with theatre, both as an actor and production team member, in various theaters along the Wasatch front for over 20 years. She is excited for this show especially as it is the first one that she and her husband are actors in the same show as well as performing one of her favorite characters. When not performing, she can be found teaching music, vocal and piano coaching and theatre classes as well as hiking the mountains and spending time with her precious family, of which she thanks for all of their love and support.

# CAST AND CREW

*John Wright Jr.*  
*(Baker – M/F Cast)*



By day John is an Engineer, by night he's a loving husband and devoted father of three. This is his second show with OPPA and he's excited to be back! His love of theater dates back to elementary school and he has been acting off and on ever since. Thanks for coming out to enjoy the show!

*Josh Rice*  
*(Steward – Th/S Cast)*



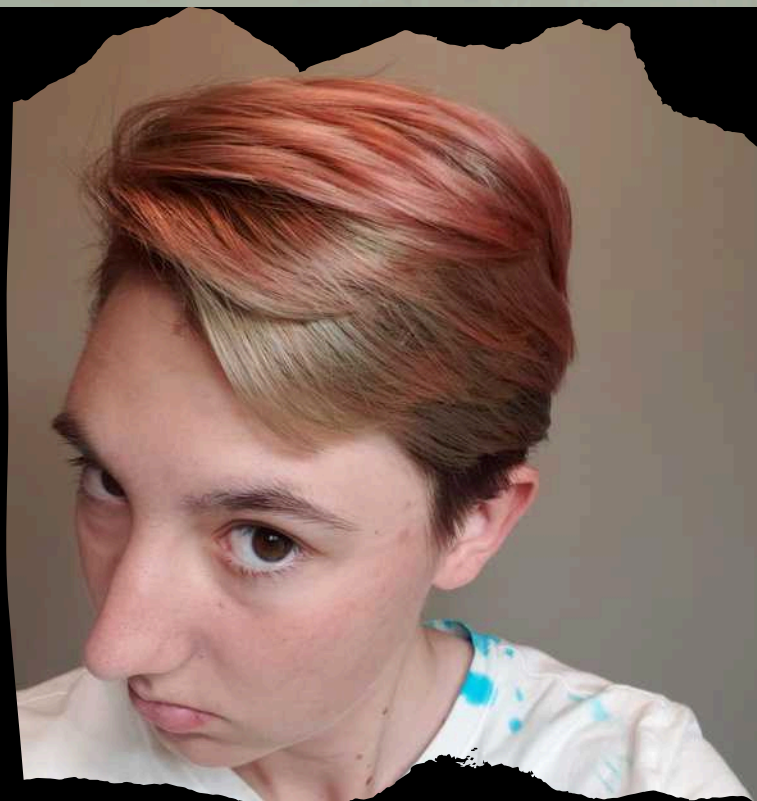
Josh has been doing community theater since 2020. He also enjoys photography, ballroom dancing, hockey, and anything to do with sound. He hopes you enjoy the show!

*Katherine Skrovan*  
*(Cinderella's Mother – Th/S Cast)*



Katherine loves OPPA! and especially enjoyed playing the part of a mermaid last summer! With experience as a vocal coach and superior solo and ensemble performer her greatest joy is song. Since a young age she has been enthralled with music and loves the creative avenues and self expression portrayed in musical theater. As a mother of four and a third grade teacher she loves to incorporate music into her daily teaching moments. #theatermatters

*KJ Weidner*  
*(Jack – M/F Cast)*



KJ has been a fan of Sondheim for a while, but this is the first show of his that they'll actually be a part of, and they're stoked to bring this fairytale character to life. They hope you'll enjoy the show as much as they'll enjoy performing for you.

*Lauralye Anderson*  
*(Rapunzel – M/F Cast)*



Lauralye is excited to be participating in another show at OPPA! Lauralye has always loved theatre and makes it a priority in her life to be in shows. She was last seen in Newsies (Medda Larkin), Addams Family (Alice Beineke), Spamalot (Lady of the Lake), and Hunchback (Storyteller). Lauralye would love to dedicate her performance to the loving memory of her mum, whose strength continues to inspire her every step on stage. Theatre matters, theatre is important, and most of all, theatre is impactful.

*Logan Morrill*  
*(Cinderella's Prince – Th/S Cast)*



Logan has been performing since he was a kid, he has always loved singing and acting and is so excited for the opportunity to work in this wonderful production! He has played a plethora of roles ranging from Jack Kelly in Disney's Newsies, to Sam Carmichael in Mamma Mia! He is currently attending Weber State University studying theatre performance

*Madison Tate*  
*(Milky White – M/F Cast)*



Madison has been in 5 shows at OPPA, and 2 shows at another theater. Madison has been on both the performance and the production side of a show, her most recent show was Jykell and Hyde at OPPA last year, she didn't perform but was the light designer. Madison got more into theater her senior year of high school where she learned the production side of a show which she has found a love for.

# CAST AND CREW

*Mckennah Scott*  
*(Lucinda - Th/S Cast)*



Mckennah is **THRILLED** to be doing her first show at On Pitch Performing Arts! Mckennah has discovered her love of theater since the 9th grade and has kept it up consistently since! Some of her favorite roles over the years had been Taylor in High School Musical, Police Officer in Freaky Friday, and Tzietal in Fiddler on the Roof. She hopes you enjoy tonight's production of Into the woods!

*Miranda Payne*  
*(Florinda - M/F Cast)*



Miranda Payne is thrilled to return to the stage after a brief hiatus, diving back into her passion for the performing arts. While she may have been absent from the spotlight, Miranda's dedication to the art of stories never wavered. Behind the scenes, she has lent her creative talents to writing, production design, and film shaping unforgettable worlds for audiences to immerse themselves in. Miranda is eager to once again share her love of performance with audiences old and new.

*Natalie Sandberg*  
*(Jack's Mother - Th/S Cast)*



Into the Woods has been **THE** favorite musical for Natalie since she was old enough to work the DVD player. She is especially excited to bring you Jack's Mother in her first performance on an OPPA! stage. She wants to thank her amazing husband and two adorable kids for supporting her through the many rehearsals and performances it takes to make a community show like this.

*Peter Davis*  
*(Jack - Th/S Cast)*



I'm a senior at Layton High School and this is my third ever production.

*Preston Fullmer*  
*(Cinderella's Prince - M/F Cast)*



Preston is excited to be in his second production here at OPPA, previously being in the Hunchback of Notre Dame! Preston has been in countless productions in the past, some notable roles include Jack Kelly in a production of Newsies, the title character in the musical Tarzan, not to mention small concert performances of Hamilton and Hadestown, where Preston performed as the characters of Alexander Hamilton and Orpheus. Preston is very thrilled to continue working and developing both his singing and acting chops, as well as start discovering his dancing feet in rehearsals. And always preston would like to remind everyone to "stay classy"!

*Sara Shaw*  
*(Cinderella's Mother - M/F Cast)*



I'm so excited to be another bucket list show here at Oppa! The last show I was in at Oppa! was Jekyll & Hyde as Poole. Other roles I've done are Brenda in Pajama Game & Sister Mary Patrick in Sister Act.

*Shawnda Moss*  
*(Baker's Wife - Th/S Cast)*



Shawnda Moss is a director, actress, and theatre educator. Her career path has led to her specialization in teacher preparation and training in pedagogy and methodology and she is the alternate licensing program director for Canyons School District. She has taught directing, acting, and theatre education for several Utah universities as well as in the public-school system. She was the Artistic Director for the Hill Cumorah Pageant and directs at various theaters in Utah and Salt Lake Valleys, most recently "Next to Normal." Shawnda performs on stage whenever she has the time and opportunity, most recently in "Fiddler on the Roof", "Sweeney Todd", and "Titanic."

# CAST AND CREW

*Taylor Brownlee  
(Lucinda - M/F Cast)*



Taylor Brownlee has been in three total productions: Jekyll and Hyde, The Hunchback of Notre Dame and now Into the Woods. All three have been here at OPPA and she is thoroughly enjoying here theater experience.

*Trinity Davis  
(Narrator - Th/S Cast)*



Trinity is a dedicated, artistic person. She involves herself in multiple things like playing the violin, theatre, drawing, and all other sorts of stuff.

*Tyler Probasco  
(Mysterious Man - Th/S  
Cast)*



In his second appearance on the OPPA stage, Tyler is very excited to be a part of this production of Into the Woods. Previously you may have seen him being dismembered as the Black Knight or piously pontificating on the explosive disposal of killer rabbits as Brother Maynard in OPPA's production of Monty Python's Spamalot! Now he is positively chuffed to be playing the Mysterious Man alongside old (and new!) friends in this Sondheim classic!



# CAST AND CREW

*Alisha Green*  
*Asst. Director*



Alisha is honored to be a part of this production. The story of stumbling through the woods, feeling in the dark, afraid, and alone. Is something everyone goes through in their life. Being able to let you know that if you keep faith, a good heart, and do your best it will work out in the end is an important message for Alisha to tell and she is excited to share this hauntingly beautiful story with you.

*Hunter Williams*  
*Choreographer*



Hunter Williams attended DaVinci Academy of Science and the Arts, moving through his time at school in many leadership and performance positions in his schools theatre dept. After high school, Hunter was accepted into Cornish College for the Arts in Seattle, Washington. He then began pursuing choreography and performance opportunities at On Pitch Performing Arts where his dedication, talent, and work ethic earned him a position as an Ambassador for the theatre, in which he has remained for the past 3 years. Hunter is so excited for you to see the show! Thank you for being a part of my creative journey! Enjoy the Show!

*Josh Rice*  
*Sound Design*



Josh has enjoyed working on this production and hopes you enjoy the show!

*Kace Barthlome*  
*Lighting Design*



Kace Barthlome is a new lighting designer to the valley. They recently graduated with a degree in lighting.

*Kennedy Miller*  
*Costume Designer*



Kennedy is excited to work on this production! She has been costuming for almost 5 years and this will be her 5th show here at OPPA!

*Kristie Post Wallace*  
*Director*



Kristie Post Wallace is a Salt Lake City-based director dedicated to theatre that inspires a world of curiosity, community, and inclusion, focusing on stories that center on women and marginalized people. Notable productions include Gentleman's Guide to Love and Murder, The Laramie Project, The Drowsy Chaperone, Hairspray, The Thanksgiving Play, Accidental Death of an Anarchist, Ada and the Engine, Body Awareness, The Giver, Hamlet, and an ASL Shadow Interpreted production of The Lion King, Jr. Kristie is proud to hold an MFA in Directing from the University of Washington School of Drama and to be an Associate Member of SDC. Contact at [www.kristiepostwallace.com](http://www.kristiepostwallace.com). ∞JBEB

*Travis Clark*  
*Music Director*



Travis is excited to be involved with arguably one of Stephen Sondheim's most creative shows. When he's not making music, he enjoys playing video games, golf, swimming, and spending time with his family. Some of his past favorite shows include Matilda, Jekyll & Hyde, Pirates of Penzance, and Sweeney Todd.