

**Solomon Press**  
**Core Mathematics C4**  
**Paper L**  
**(Question Paper)**

**All exam papers are issued free to students for education purpose only.**  
**Mr.S.V.Swarnaraja (Marking Examiner, Team Leader & Author)**  
**www.swanash.com, Mobile: +94777304755 , email: swa@swanash.com**

GCE Examinations  
Advanced Subsidiary

## Core Mathematics C4

Paper L

Time: 1 hour 30 minutes

### *Instructions and Information*

---

Candidates may use any calculator EXCEPT those with the facility for symbolic algebra, differentiation and/or integration.

Full marks may be obtained for answers to ALL questions.

Mathematical formulae and statistical tables are available.

This paper has seven questions.

### *Advice to Candidates*

---

You must show sufficient working to make your methods clear to an examiner.  
Answers without working may gain no credit.



*Written by Shaun Armstrong*

© Solomon Press

*These sheets may be copied for use solely by the purchaser's institute.*



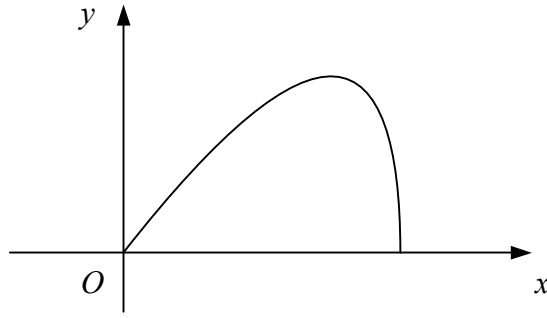








6.



**Figure 2**

Figure 2 shows the curve with parametric equations

$$x = t + \sin t, \quad y = \sin t, \quad 0 \leq t \leq \pi.$$

- (a) Find  $\frac{dy}{dx}$  in terms of  $t$ . (3)
- (b) Find, in exact form, the coordinates of the point where the tangent to the curve is parallel to the  $x$ -axis. (3)
- (c) Show that the region bounded by the curve and the  $x$ -axis has area 2. (6)

---

---

---

---

---

---

---

---

---

---

---

---

---

---

---

---

---

---

---

---

---

---

---

---



