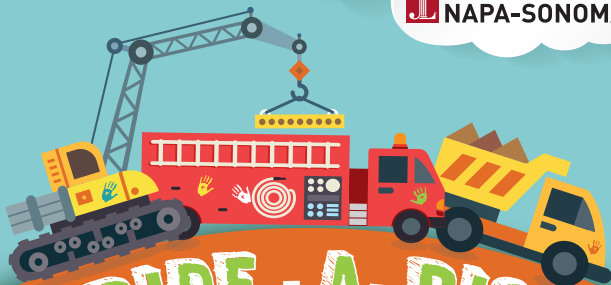


presented by



JUNIOR LEAGUE OF

NAPA-SONOMA



RIDE - A - RIG

Sunday, June 24th, 2018 | 10:00 am - 2 pm
Sonoma County Fairgrounds - Lytle Cow Palace | Santa Rosa

Ride-A-Rig is an educational community event that will provide children a hands-on opportunity to see and touch a variety of vehicles that play important roles in our community. Raffle tickets will be available for purchase.

TICKETS

\$5.50 online at jlns.org or at the door

Save \$.50 per ticket by purchasing in advance directly from a JLNS member (cash or check).

(Kids 2 and under admitted free)

THE JUNIOR LEAGUE OF NAPA-SONOMA is an organization of women committed to promoting voluntarism, developing the potential of women, and improving communities through the effective action and leadership of trained volunteers. Its purpose is exclusively educational and charitable.