

Lloyd and Meredith



www.lloydandmeredith.com



**Your Sprayer
Headquarters
2020**



202 Chestnut St.
Atlantic, IA 50022
712-243-5520



Lloyd and Meredith, Inc.

202 Chestnut Street • Atlantic, Iowa 50022

712-243-5520

Welcome to Lloyd and Meredith's 2020 Sprayer Catalog. Lloyd and Meredith is located in Atlantic, Iowa, where the business was founded 138 years ago. Lloyd and Meredith is a small company offering personalized, prompt service. We strive to ship orders same day.

Table of Contents

ACE Pump Parts	8, 9
ATV Sprayers	2
Boom Wheel	24
Calibration Pitcher	24
Centrifugal Pumps	
ACE • PTO Driven	6
ACE Hydraulic/Hypro ..	7
Delavan Roller Pump	10
Fittings	15, 16, 18
Foam Markers	4
Gauges	13
Gloves	12
Hand Guns	22
Hose and Clamps	17
Inductors	24
Venturi Kit	24
Nozzle Bodies	18-19
Nozzles	21
Quick Couplers	13
Spot Sprayers	3
Spray Tips	21
Sprayer Controls	11
Strainers	14
12-Volt Pumps	5
Tanks	23
Thomas Compressors	5
Thread Sealants	23
Transfer Pumps	5
Utility Sprayer	1
Valves	
Bolted Ball	14
Electric Ball	10, 12
Solenoid	11

To Order: Call 712-243-5520 or fax your order to 712-243-4996. Lloyd and Meredith customer service hours are 8:00 a.m. to 5:00 p.m. C.S.T. Monday through Friday.

Prices: Prices listed in this catalog are Lloyd and Meredith selling prices. Prices are subject to change without notice.

Payment: Methods of payment are-- Check, Master Card, VISA, Discover, or C.O.D. There is a \$9.00 charge on C.O.D. shipments.

Freight Damage: All damaged freight must be reported at the time of delivery to the carrier.

Returns: No merchandise is to be returned to Lloyd and Meredith for credit, unless authorization is first given by Lloyd and Meredith.

Warranty: Defective merchandise and warranty items will be handled in accordance with the manufacturer's warranty program.

Non-warrantable merchandise will be handled at customer's discretion. All freight charges incurred are customer's responsibility.

Catalog Errors and Changes: Product specifications and pricing presented in this catalog are believed to be accurate at the time of publication. Lloyd and Meredith does, however, reserve the right to override information deemed to be in error.

Find us on the web!

www.lloydandmeredith.com

Utility Sprayer



- 40- or 60-gallon Tank
- 5.3 gpm 12-volt pump
- Spot Spray Gun with Adjustable Tip
- Boomless Nozzle Kit with 22' Spray Width

\$585⁰⁰

60-gallon Sprayer w/ 22' Boomless Kit

Sprayer less the
22' Boomless Kit

40-gallon ..\$440⁰⁰

60-gallon \$455⁰⁰



« «

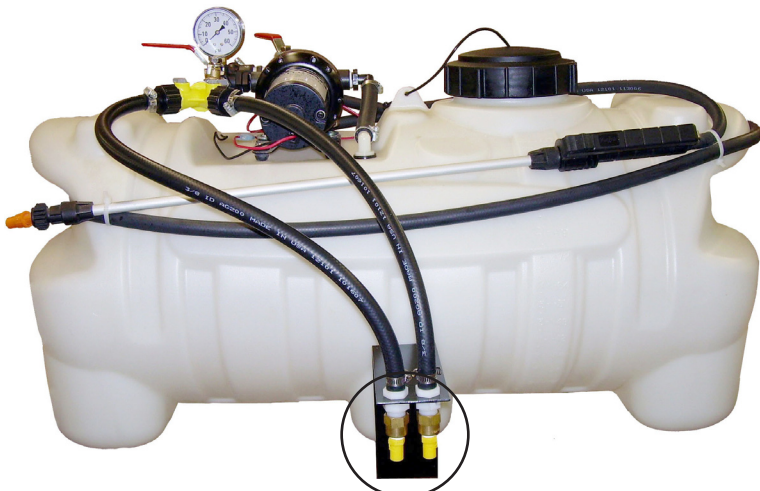


ATV Sprayers

- 25-gallon with 150" boom
- Tank with drain
- 3.5 gpm, 12 Volt Pump
- Pressure Gauge
- Bypass Valve for pressure control
- TeeJet Handgun with 10' of 3/8" hose
- 150" Coverage Folding Boom



\$545



\$525

- 25-gallon with 22' coverage Boomless Tips
- Tank with drain
- 5.3 gpm, 12 Volt Pump
- Pressure Gauge
- Bypass Valve for pressure control
- TeeJet Handgun with 10' of 3/8" hose
- Two-directional TeeJet tips for 22' coverage

Shut off one tip and spray 11' one direction for fence rows and roadside applications.



SPOT SPRAYERS

15 gallon w/ 1.0 economy pump.....	\$89 ⁰⁰	
15 gallon w/ 1.0 gpm pump	\$125 ⁰⁰	
15 gallon w/ 1.8 gpm pump	\$140 ⁰⁰	w/ 100# pressure ... \$175 ⁰⁰
25 gallon w/ 1.0 gpm pump	\$140 ⁰⁰	
25 gallon w/ 1.8 gpm pump	\$155 ⁰⁰	w/ 100# pressure ... \$190 ⁰⁰
25 gallon Deluxe	\$345 ⁰⁰	
includes 3.5 gpm pump, pressure gauge, by-pass valve, and 1/4 turn ball valve for boom supply		
25 gallon Deluxe with 5.3 gpm pump.....	\$410 ⁰⁰	

STANDARD EQUIPMENT

- ShurFlo 12-Volt Pump.
- Spraying Systems Poly Trigger Gun with adjustable nozzle.
- Non-corrosive poly tank with 5" screw-on lid.
- Tank Drain for easy clean-out.

AVAILABLE OPTIONS

Deluxe Trigger Spray Gun w/ Poly Adj. Tip add \$34⁰⁰

150" Coverage Folding Spray Boom..... \$165⁰⁰



FOAM MARKERS

High Capacity

25 Gallon Poly Tank
Right-Left Switching
Needle Valve Adjustment
Thick Consistent Foam
4" Foam Collectors
12-Volt Compressor and Pump
Quick Disconnect Wiring Harness
Simple Operation
Easy Installation

\$995⁰⁰



The LM 25-gallon foam marker can be mounted on any type of spray applicator. The liquid and air are mixed at the end of the boom producing a high quality foam. Hose is supplied for a 60' boom, with additional available upon request. The main unit is preassembled with only the mounting of the drop tubes and hose connections required.

Switch

\$12⁸⁰



Foam Drop

\$21⁰⁰



Solenoid Valve

\$82⁵⁰



Mix Chamber

\$18⁸⁰



Foam Dye also available.
Please call for current pricing.

FOAM MARKER	Specifications
Foam Output	8.4 gpm
Max. Solution Usage	11.4 gph
Ave. Drop Interval	2.8 seconds

StayFoam 120 Concentrate

1 gallon.. \$48⁶⁰

STF120 produces a thick, bright white foam featuring high visibility that performs well under adverse conditions. Stayfoam 120 is reliable when applied in hot weather, to extremely dry soil and intense sunlight. The features provided in STF 120 enable the applicator to properly align the spraying equipment, resulting in accuracy during the application process.



Mixing rates:
1 oz to 1 gallon water

SHUR-FLO 12 VOLT PUMPS

Model	GPM	Pump Type	Use	Price
8000-541-236	1.0	Demand	Spot Sprayer	\$73.00
8000-543-236	1.8	Demand	Spot Sprayer	\$98.00
2088-443-144	3.5	Demand	Spot Sprayer	\$115.00
8000-543-250	1.8	Bypass	Foam Marker.....	\$99.00
Delavan	5.0	Demand	Spot Sprayer	\$165.00
8000-543-238	1.8	Demand	100# Spot Sprayer ..	\$132.00



Model: 8000-543-238

THOMAS COMPRESSORS

(for Foam Markers)



Standard: \$430⁰⁰

High Capacity: \$471⁰⁰



Gas Engine Polypropylene Transfer Pumps



Pump Performance Model 1542P-65SP

2" x 2" NPT self-priming centrifugal pump powered by a 6.5 HP PowerPro engine.

Max Flow Rate: 200 gpm
Max Pressure: 58 psi

\$340⁰⁰

Other applications include:

- Polypropylene housing is suitable for corrosive environments
- PowerPro engine with overhead valve
- Easily handles high capacity liquid transfer jobs



Pump Performance Model 1543P-130ESP

3" Poly Pump powered by 13 hp PowerPro Engine w/ electric start.

Max Flow Rate: 440 gpm
Max Pressure: 54 psi

\$995⁰⁰

Highest efficiency and horsepower on the market!



PTOC-600-65SPQC



PTOC-600-QC



FMC-150-MIA

**PTO DRIVEN
CENTRIFUGAL
PUMPS**

1¼" Suction x 1" Discharge			
Model	Description	Wt.	Price
PTOC-600-QC	Cast iron straight centrifugal with pulleys and 10 groove belt arranged for direct mounting on 1-2/8" 600 rpm PTO shaft. 0-70 psi. Equipped with 6 spline quick coupler PTO drive shaft. Viton mechanical seal. Fully guarded for operator safety.	46	\$812.00
PTOC-600-B	Cast iron straight centrifugal with pulleys and 10 groove belt. One-inch diameter stub shaft and integral mounting base. 600 rpm Tumblerod drive shaft. 0-70 psi. Equipped with Viton mechanical seal. Fully guarded for operator safety.	42	\$812.00
PTOC-1000-21SP	Cast iron straight centrifugal with pulleys and 10 groove belt arranged for direct mounting on 1-3/8" 1000 rpm PTO shaft. 0-70 psi. Equipped with 21 spline split PTO drive shaft and split ring locking collar. Viton mechanical seal. Fully guarded for operator safety.	43	\$815.00
PTOC-1000-20SP	Cast iron straight centrifugal with pulleys and 10 groove belt arranged for mounting on 1-3/4" 1000 rpm PTO shaft. 0-70 psi. Equipped with 20 spline split PTO drive shaft and split ring locking collar. Viton mechanical seal. Fully guarded for operator safety.	45	\$846.00
PTOC-1000-B	Cast iron straight centrifugal with pulleys and 10 groove belt. 0-70 psi. One-inch diameter stub shaft and integral mounting base for 1000 rpm Tumblerod drive shaft. Viton mechanical seal. Fully guarded for operator safety.	40	\$812.00
<div> 1½" Suction x 1¼" Discharge <div> 150 SERIES HIGH PERFORMANCE </div> </div>			
Model	Description	Wt.	Price
PTOC-150-600-6SPQC	0-100 psi, cast iron straight centrifugal with pulleys and 10 groove belt assembled for direct mounting on 1-3/8", 600 rpm PTO shaft, equipped with Quick Coupler. Viton mechanical seal. Fully guarded for operator safety.	51	\$911.00
PTOC-150-600-B	0-100 psi, cast iron straight centrifugal with pulleys and 10 groove belt. One-inch diameter stub shaft and integral mounting base for 600 rpm Tumblerod drive shaft. Viton mechanical seal. Fully guarded for operator safety.	52	\$911.00
PTOC-150-1000-21SP	0-100 psi, cast iron straight centrifugal with pulleys and 10 groove belt arranged for direct mounting on 1-3/8" 1000 rpm PTO shaft. Equipped with 21 spline PTO shaft and locking collar. Viton mechanical seal. Fully guarded for operator safety.	48	\$914.00
PTOC-150-1000-20SP	0-100 psi, cast iron straight centrifugal with pulleys and 10 groove belt arranged for direct mounting on 1-3/4" 1000 rpm PTO shaft. Equipped with 20 spline PTO shaft and locking collar. Viton mechanical seal. Fully guarded for operator safety.	50	\$945.00
PTOC-150-1000-B	0-100 psi, cast iron straight centrifugal with pulleys and 10 groove belt. One-inch diameter stub shaft and integral mounting base for 1000 rpm Tumblerod drive shaft. Viton mechanical seal. Fully guarded for operator safety.	45	\$911.00
FMC-150-MIA	Replacement Pump for PTOC-150 Models	23	\$361.00

FMC-150-HYD-206

1½" x 1¼"

Suction Discharge



150 SERIES
HIGH PERFORMANCE



#LS206N

Flow Limiter* \$69⁸⁰

*Required on Load Sensing Closed
Center Hydraulic Systems

\$723⁰⁰

CENTRIFUGAL PUMP--TRACTOR HYDRAULIC SYSTEM DRIVEN

- > The High Performance Pump: 88 gpm at 100 psi.
- > Provides higher pressure and greater volume for applications with large tanks and longer spray booms.
- > The 206 motor requires 7 gpm hydraulic fluid input and fits virtually all tractor hydraulic systems.

Recommended for:

- » Pressure Compensating Closed Center Systems
- » Load Sensing Closed Center Systems
- » Open Center Systems up to 16 gpm using internal needle valve bypass.



HYPRO CENTRIFUGAL PUMPS

Series 9000 Gear-Driven Models

Model No.	Max. GPM	Max PSI	Max RPM	Description	Price	Est. Wt. Each
9006C-O	117	80	893	Cast iron pump with oil-lubricated gear drive and 1 3/8" 540 rpm PTO hub with locking collar and mounting clip. Clips pump to PTO shield of most tractors. 1½" inlet; 1¼" outlet	\$810	44 lbs.
9008C-0	110	70	926	Cast iron pump with oil-lubricated gear drive and 1 3/8" 1000 rpm PTO hub with locking collar and mounting clip. Clips pump to PTO shield of most tractors. 1½" inlet; 1¼" outlet	\$861	45 lbs.
9016C-0	117	80	881	Cast iron pump with oil-lubricated gear drive and 1" solid shaft, ports (NPT); 1½" inlet; 1¼" outlet	\$800	41 lbs.
9018C-0	110	70	915	Cast iron pump with oil-lubricated gear drive and 1" solid shaft, ports (NPT); 1½" inlet; 1¼" outlet	\$847	42 lbs.
9028C-0	110	70	1075	Cast iron pump with oil-lubricated gear drive and 1¼" 1000 rpm PTO hub with locking collar and mounting clip. Clips pump to PTO shield of most tractors; 1½" inlet; 1¼" outlet	\$999	48 lbs.

HYPRO HYDRAULIC PUMPS

Model No.	Max. GPM	Max PSI	Hydraulic Motor gpm	Description	Price	est. Wt. each
9303C-HM1C	114	130	9-14 gpm	Used for open or closed center systems. 1-1/2" NPT inlet, 1-1/4" NPT outlet.	\$746	26 lbs
9306C-HM1C	207	130	9-14 gpm	Used for open or closed center systems. 2" NPT inlet, 1-1/2" NPT outlet.	\$865	33 lbs



Series 9000



9303C-
HM1C

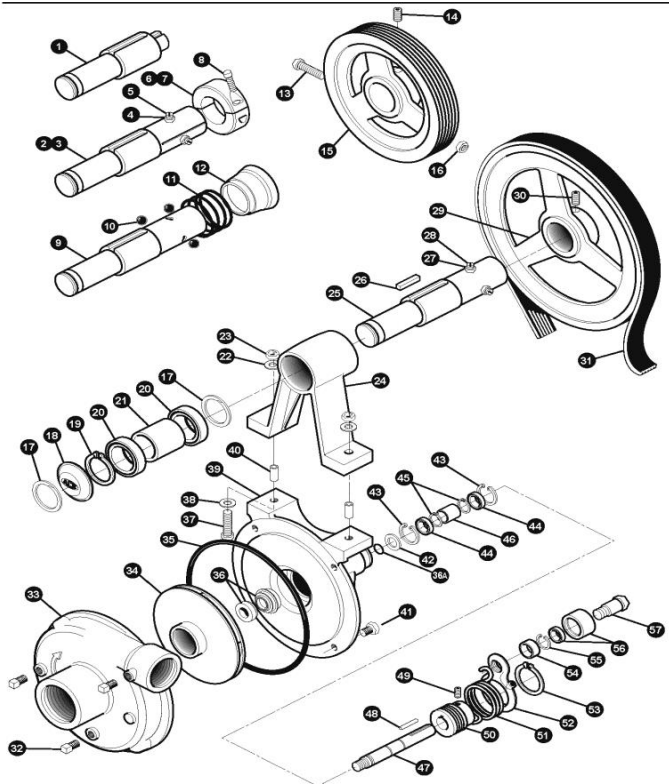


9306C-
HM1C

REF. #	PART #	DESCRIPTION	PRICE
1	BAC-10-S	Shaft, 1" Tumblerod stub	\$253.00
2	BAC-10-175-20SP	Shaft, 1-3/4" 20 Tooth PTO spline	\$344.00
3	BAC-10-21SP	Shaft, 1 3/8" 21 Tooth PTO spline	\$324.00
4	40960	Nut, 3/8" NC, jam	\$0.55
5	BAC-40	Set screw, 3/8" NC slotted	\$1.05
6	BAC-11-175	Locking collar, split ring (for BAC-	\$127.00
7	BAC-11	Locking collar, split ring (for BAC-	\$94.00
8	BAC-11-1	Set screw (for BAC-11 and BAC-1	\$1.10
9	BAC-10-6SP-QC	Shaft, 1-3/8" 6 Tooth PTO spline,	\$260.00
10	BAC-83-QC	Ball for quick coupler	\$1.55
11	BAC-82-QC	Spring for quick coupler	\$12.50
12	BAC-81-QC	Ball retainer sleeve for quick cou	\$32.60
13	41250	Cap screw, 5/16" NC x 3-1/4", he	\$2.05
14	41300	Set screw, 3/8" NC x 5/8", allen h	\$0.80
15	BAC-30-10-M	Pulley, 6.375" P.D. x 2" Bore, Pol	\$208.00
15	BAC-30-175	Pulley, 6.375" P.D x 2-3/8" Bore,	\$224.00
16	BAC-63	Nut, 5/16" NC, self locking, for tu	\$0.80
17	BAC-34	Snap ring, internal, BAC-15 beari	\$5.10
18	BAC-27	Name plate	\$12.00
19	BAC-35	Snap ring, external, BAC-10 drive	\$1.05
20	BAC-31-1	Bearing, sealed, BAC-10 drive sha	\$41.00
21	BAC-38-1	Spacer, bearing, BAC-10 shaft	\$29.40
22	BAC-44	Washer, 3/8" locking	
23	BAC-45	Nut, hex, 3/8" NC	
24	BAC-15	Housing, PTO drive shaft bearing	\$168.00
24	BAC-15-B	Housing, tumblerod drive shaft b	\$237.00
25	BAC-10-6SP	Shaft, 1-3/8" 6 Tooth PTO spline	\$260.00
26	BAC-51	Shaft, 3/8" x 1/2" x 1-1/2" key, P	\$5.60
27	40960	Nut, jam, 3/8" NC	\$0.55
28	BAC-40	Set screw, 3/8" NC, slotted	\$1.05
29	BAC-30-10	Pulley, 10.6" P.D. x 2" bore Poly-	\$216.00
30	41300	Set screw, 3/8" NC x 5/8", allen h	\$0.80
31	BAC-28-10	Belt, Poly-V, 10 groove (for PTOC	\$40.00
31	BAC-28-10-M	Belt, Poly-V, 10 groove (for PTOC	\$40.00
32	BAC-53	Pipe plug, 1/8" NPT	\$0.60
32	41120	Pipe plug, 1/8" NPT, stainless steel (optional	
33	BAC-12	Volute 1-1/4" x 1", cast iron	\$204.00
34	BAC-26-CI	Impeller, cast Iron, left hand thre	\$164.00
34	BAC-26-VALOX	Impeller, Valox, left hand thread	\$74.00
35	BAC-4-A	O-ring, volute seal	
36	BAC-7SC	Seal, silicon carbide mechanical (includes 40	
36	BAC-7V	Seal, Viton, mechanical (includes	\$40.80
36A	40160	O-ring for mechanical seal	\$1.00
37	BAC-42	Cap screw, 3/8" NC x 2" hex head	
38	BAC-43	Washer, 3/8" flat	
39	BAC-14-MIA	Mounting frame, machined for id	\$216.00
40	BAC-15-PIN	Alignment pin	
41	40950	Cap screw, 3/8" NC x 3/4" hex he	\$0.55
41	40930	Cap screw, 3/8" NC x 3/4" hex head, stainles	
42	BAC-54	Slinger	\$1.55
43	BAC-33	Snap ring, internal, for mounting	\$2.05
44	BAC-37	Bearing, sealed, for pump shaft	\$16.00
45	BAC-32	Snap ring, external, for driven pu	\$0.55
46	BAC-32-S	Spacer for pump shaft	\$6.10
47	BAC-6-SS	Shaft, 5/8", left hand course thre	\$102.40
48	BAC-50	Key, 3/16" x 3/16" x 1-1/4"	\$1.55
49	BAC-57	Cap screw, 5/16" NC x 5/16" alle	\$0.80
50	BAC-29-10-1.50	Pulley, 1.5" P.D. x 5/8" bore, Poly	\$66.00
51	BAC-5	Spring, idler mounted torsion	\$22.40
52	BAC-13	Idler arm	\$71.00
53	BAC-36	Snap ring, external, BAC-13 idler	\$2.05
54	BAC-46	Spacer, 5/8"	\$29.00
55	41070	Retainer ring	

REF. #	PART #	DESCRIPTION	PRICE
56	BAC-55	Idler bearing and outer roller ass	\$51.20
57	BAC-47	Cap screw, 5/8" NC x 2 1/8" hex	\$8.15
#	BAC-52	Chain, 1/4" cold shut, torque and	\$4.10
#	BAC-58	Zerk fitting, 1/4" NPT, for idler ar	\$3.05
#	BAC-55-A	Idler arm assembly (includes 52 t	\$152.00
#	BGKB	Belt and shaft guard kit for all PT	--
#	RK-PTOC-600	Repair kit for 600 RPM models, i	--
#	RK-PTOC-1000	Repair kit for 1000 RPM, include	--
#	RK-FMC	Repair kit for pump only, include	--
#	RK-FMCSC	Repair kit for pump only, include	--
#	FMC-MIA	Pump end only, machined to acc	--

Parts List for ACE Centrifugal Pumps



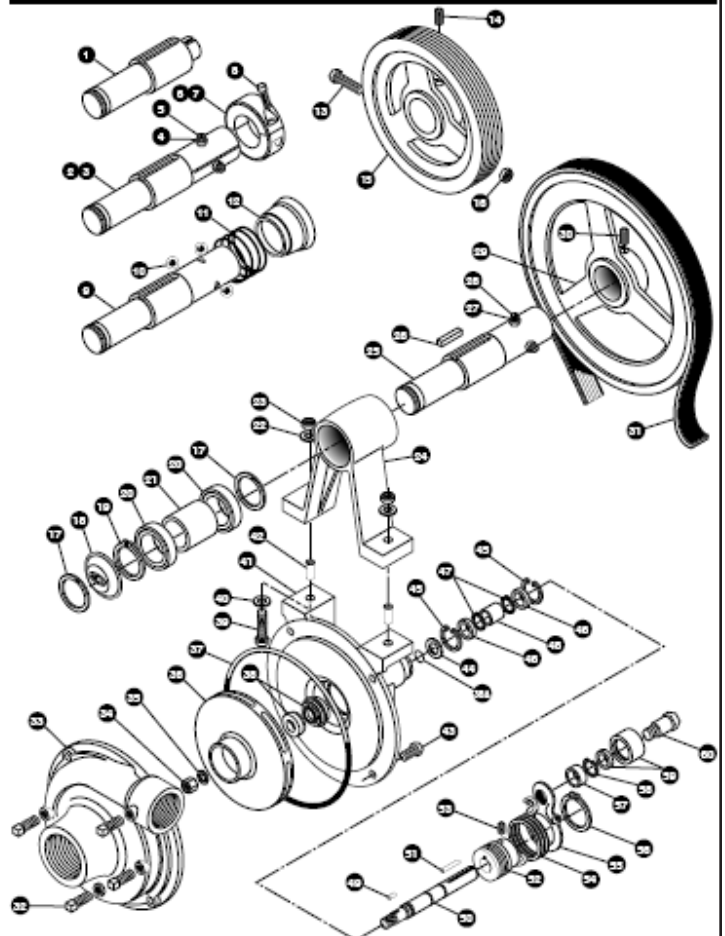
ACE PUMPS PARTS -- 150 SERIES BELT DRIVE

Ref. #	Part No.	Description	Price
1	*BAC-4-150	"O" Ring, Volute Seal	\$8.15
2	BAC-5-150	Idler mounted torsion spring	\$25.50
3	BAC-6-150/200-SS	3/8" Driven Shaft with Keyway, S.S.	\$102.40
4	*BAC-7V	Viton Mechanical Seal	\$40.80
#	*40160	"O" Ring for Shaft	\$1.00
6	BAC-10-6SP-QC	1-3/8" 6 Tooth PTO shaft, Q/C	\$260.00
7	BAC-10-175-20SP	1-3/4" 20 Tooth PTO shaft	\$344.00
8	BAC-10-21SP	1-3/8" 21 Tooth PTO shaft	\$324.00
9	BAC-10-S	1" Tumblerod stub drive shaft	\$253.00
10	BAC-11	Split ring, locking collar	\$94.00
11	BAC-11-175	Split ring, locking collar	\$127.00
12	BAC-11-1	Set screw	\$1.10
13	BAC-12-150	Volute, 1 1/2" x 1 1/4"	\$253.00
14	BAC-13	Idler Arm	\$71.00
15	BAC-14-150-MIA	Mounting frame, M.I.A.	\$265.60
16	BAC-15	PTO Drive shaft bearing housing	\$168.00
#	BAC-15-B	Tumblerod housing w/ Mounting	\$237.00
17	BAC-26-150-P	Impeller, poly	\$74.00
17	BAC-26-150-CI	Impeller, Cast Iron with Keyway	\$176.00
18	BAC-27-150-M	Name Plate (21SP)	\$12.00
18	BAC-27-150-175-M	Name Plate (20SP)	\$12.00
18	BAC-27-150-600	Name Plate (600)	\$12.00
19	*BAC-28-10-150	Poly-V Belt, 10 groove (600)	\$48.00
#	*BAC-28-10M-150	Poly-V Belt, 10 groove (1000)	\$48.00
20	BAC-29-10-1.35	1.35" P.D. x 5/8" V pulley	\$64.00
#	BAC-29-10-1.70	1.7" P.D. x 5/8" V pulley	\$64.00
21A	BAC-30-10-150	11.6" P.D. x 2" V pulley	\$229.00
21B	BAC-30-175-150	7.9" P.D. x 2-3/8" V pulley	\$245.00
21B	BAC-30-10M-150	7.9" P.D. x 2" V pulley	\$224.00
22	BAC-31-1	Sealed ball bearing	\$41.00
23	BAC-32	External snap ring	\$5.55
24	BAC-32-S	Spacer for pump shaft	\$6.10
25	BAC-33	Internal snap ring	\$2.05
26	BAC-34	Internal snap ring	\$5.10
27	BAC-35	External snap ring	\$1.05
28	BAC-36	External snap ring	\$2.05
29	BAC-37	Sealed Ball Bearing	\$16.00
30	BAC-38-1	Bearing spacer	\$29.40
31	40930	Hex head cap screw S.S.	\$2.55
31	40950	Hex head cap screw	\$5.55
32	BAC-40	3/8" NC Slotted Set Screw	\$1.05
33	40960	3/8" NC Jam Nut	\$5.55
34	BAC-42	3/8" NC x 1-3/4" cap screw	\$1.50



Ref. #	Part No.	Description	Price
35	BAC-43	3/8" Flat Washer	\$5.50
36	BAC-44	3/8" Lock Washer	\$5.50
37	BAC-45	3/8" NC Hex Nut	\$5.50
38	BAC-46	5/8" Spacer	\$29.00
39	BAC-47	Idler Cap Screw	\$8.15
40	BAC-49	Retainer Ring	\$7.75
41	BAC-50	3/16" x 3/16" x 1 1/4" Key	\$1.55
42	BAC-51	3/8" x 1/2" x 1 1/2" Key	\$5.60
43	BAC-52	1/4" Cold Shut Chain Anchor	\$4.10
44	BAC-53	1/8" NPT Pipe Plug	\$6.60
45	BAC-54	Slinger	\$1.55
46	BAC-55	Idler bearing and outer assembly	\$51.20
47	BAC-57	Allen head set screw	\$8.80
48	41250	Allen head cap screw	\$2.05
49	BAC-63	5/16" NC self-locking nut	\$8.80
50	41300	Allen head set screw	\$8.80
52	BAC-81-QC	Ball Retainer Sleeve	\$32.60
53	BAC-82-QC	Spring for Quick Coupler	\$12.50
54	BAC-83-QC	Ball for Quick Coupler	\$1.55
55	BAC-23-A-SS	3/8" NF Hex Nut, S.S.	\$11.70
56	BAC-24-HYD-SS	3/8" Washer, S.S.	\$2.00
57	BACH-25	1/8" x 1/8" x 1/2"	\$1.05

EXPLODED VIEW DRAWING



Delavan Roller Pumps



Model 6900C

Model No.	Max GPM	Max PSI	Description	Price
6900C	20.0	300	Cast iron 6 roller pump, 11/16" rollers	\$132.00
8900C	24.0	300	Cast iron, 8 roller pump, 11/16" rollers	\$173.00
PTO Pump Coupler . . . \$39.00				

Model 6900C
1200 rpm
5/8" solid steel shaft
3/4" NPT port

Model 8900C
1000 rpm
15/16" solid steel shaft
1" NPT port

All pumps contain Ultra Rollers for better performance, wear life, and smooth operation. Viton seals and stainless steel shafts are standard.

DirectoValve

\$204⁵⁰

Nylon Ball Valves
for Pressures up
to 300 PSI



344BEC-24-C Remote
Control Electric Ball
Valves Compatible with
All Sprayer Controls

- Works with a simple single pole off/on switch.

CALC•AN•ACRE II

*Speed,
Distance,
and Area
Monitor*



w/ Magnetic
Speed Sensor

\$350⁰⁰

The Astro Series of GPS-Based Speed Sensors

Note: It is necessary to know the make and model of the controller you will be hooking it up to.

\$296⁰⁰



The Astro II

- Great Price!
- Compact
- Accurate
- Durable
- Easy transfer from one vehicle to another

Electric Sprayer Controls

All Sprayer Control Kits include:

- Control Panel,
- Pressure Regulator
- Gauge Tee
- 16-Foot Wiring Cables
- Gauge Tube.

Kits may be ordered with or without directo valves.



AAK-744A-100L-33S
3 Section Control Kit

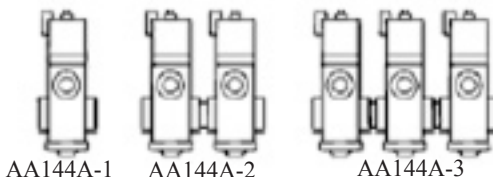
SPRAYER CONTROL KITS

Kit No.	Description	744-3 Triple Control	AA244-3 Regulator	Directo Valve	Price
AAK-744A-100L-30S	Triple Control	1	1	--	\$325.00
AAK-744A-100L-33S	90-50163 Triple Control	1	1	AA144A-3	\$520.00
AA244-3/4	Regulator Only, 3/4" FNPT				\$118.00
AAK-744A-100L	Console and Wiring Kit				\$295.00

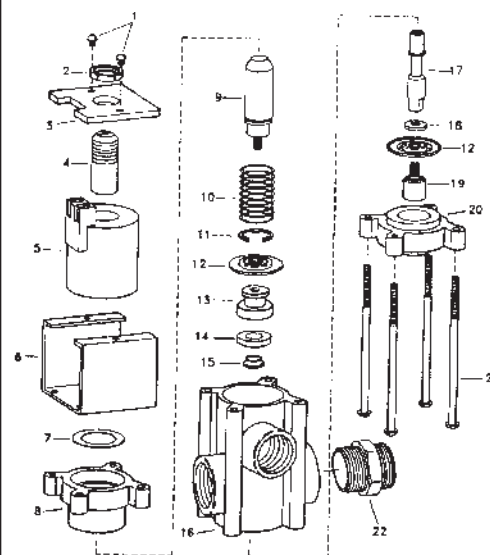
The 744A Sprayer Controls used in these kits can be used for operating pressures to 100 psi. Higher pressures are available on a special order basis

DIRECTOVALVE Electronically Operated Valve

Mfg.'s Part No.	Description	List Price
AA144A-1	1 Unit Valve ...	\$98.95
AA144A-2	2 Unit Valve ..	\$199.10
AA144A-3	3 Unit Valve ..	\$299.25



Designed for remote "on-off" control of spray booms and nozzles from operator's location. Operates on a 12-volt DC system (2 Amp Current Draw). For pressures to 100 psi.



Ref.	Part No.	Description	Price
1	CP-14933-SS	Screw, (2 req'd)	\$1.88
2	CP15168-IENP	Jam Nut	\$6.27
4	CP15161-IENP	Armature Stop	\$13.38
5	CP15163-NYB	Coil Assembly	\$49.44
7	CP15169-SS	Washer	\$2.43
8	CP15164-NYB	Upper Diaphragm Housing	\$6.54
9	CP15170-IENP	Armature	\$24.67
10	Available in Kit Only		
11	CP14813-IENP	Retaining Ring	\$2.43
12	Available in Kit Only		
13	CP14807-SS	Seat Washer	\$19.97
14	Available in Kit Only		
15	CP14811-SS	Spacer	\$5.75
16	CP14801-PP	Body, Polypropylene	\$17.73
17	CP14812-SS	Stem, Stainless Steel	\$22.58
18	CP14806-SS	Washer, Stainless Steel	\$6.60
19	CP15162-SS	Lower Diaphragm Piston	\$12.56
20	CP15165-NYB	Lower Diaphragm Housing	\$24.33
21	CP14819-SS	Screw, Stainless Steel (4 req'd)	\$2.22
22	CP21737-NYB	Connecting Nipple	\$1.20
	PK-AB144A-1-KIT	Repair Kit	\$26.82



DirectoValve® 450 Manifold



453BEC Manifold

450BEC Features:

- Maximum pressure 150 psi (10 bar)
- Easy mounting with built-in brackets
- Nylon stem and polypropylene ball available as standard
- Flow rate 31 GPM @ 5 psi pressure drop (flow rates may vary based on number of valves and inlet size)
- No external fuses--incorporates an internal resettable fuse

~~disconnect power to valve for 20 seconds to reset~~

#451BEC1-Valve Manifold\$224⁰⁰

#452BEC2-Valve Manifold \$399⁰⁰

#453BEC3-Valve Manifold\$585⁰⁰

#454BEC 4-Valve Manifold..... \$766⁰⁰

#455BEC 5-Valve Manifold..... \$946⁰⁰

Replacement Motor only.... \$185⁰⁰

Chemical Gloves

100% Nitrile Gloves
13" color: Green

- Non-Slip Grip
- Puncture Resistant
- Comfortable
- USDA Accepted



\$29⁹⁰
per dozen

Chemical Isolator Kit

\$49⁵⁰



- Keeps chemicals from entering tractor or truck cab
- Protects and dampens gauge from corrosive chemicals
- Atlas diaphragm
- Comes with fittings for 1/8" and 1/4" diameter gauge tubing

Manual Pressure Relief/Regulating Valves

\$19⁸⁰



**Inlet, 3/4" MNPT
Outlet, 3/4" FNPT**

Bypasses excess liquid. Chemical-resistant diaphragm seals off operating parts from contact with chemicals and remains resilient for chatter-free, responsive pressure control.

A / Male Adapter Female Thread



Size	Part No.	Price
¾" Female NPT	075-A	\$4.20
1" Female NPT	100-A	\$4.20
1½" Female NPT	150-A	\$4.80
2" Female NPT	200-A	\$5.60
3" Female NPT	300-A	\$13.60

D / Female Coupler Female Thread



Size	Part No.	Price
¾" Female NPT	075-D	\$9.40
1" Female NPT	100-D	\$10.90
1½" Female NPT	150-D	\$12.90
2" Female NPT	200-D	\$16.40
3" Female NPT	300-D	\$26.45

B / Coupler X Male NPT



Size	Part No.	Price
1½" Female Coupler, Male Thread	150-B	\$12.90
2" Female Coupler, Male Thread	200-B	\$16.50

F / Male Adapter Male Thread



Size	Part No.	Price
1½" M x M	150-F	\$4.90
2" M x M	200-F	\$6.65
3" M x M	300-F	\$17.40

PRESSURE GAUGES



1/4" Bottom Fitting, Brass Stem

2½" Face

Description	Part No.	Price
0-100 psi	100G	\$9.40

MPT - Brass Stem, 4" Face

0-100 psi	100-G4	\$20.40
-----------	--------	---------

Liquid Filled, 2½" Face

0-100 psi	100 LG	\$19.90
-----------	--------	---------

Liquid Filled, 4" Case		\$48.90
------------------------	--	---------

CAP / CAP for Male Adapter



Size	Part No.	Price
¾" Cap for Adapter	075-CAP	\$9.40
1" Cap for Adapter	100-125-CAP	\$10.90
1½" Cap for Adapter	150-CAP	\$12.60
2" Cap for Adapter	200-CAP	\$16.40
3" Cap for Adapter	300-CAP	\$25.90

PL / Plug for Female Coupler



Size	Part No.	Price
¾" Plug for Coupler	075-PL	\$4.40
1" Plug for Coupler	100-125-PL	\$4.40
1½" Plug for Coupler	150-PL	\$4.90
2" Plug for Coupler	200-PL	\$6.60
3" Plug for Coupler	300-PL	\$13.80

WARNING!

Brass Stem Gauges are **NOT** to be used with Ammonia!



Poly Ball Valve

Size	Part No.	Price
3/4"	V-075	\$22.40
1"	V-100	\$24.50
1-1/4" Full Port	V-125-FP	\$29.95
1-1/2" Full Port	V-150-FP	\$29.95
2" Full Port-4 Bolt	V-204-FP	\$39.90
3" Full Port	V-300-FP	\$94.70

VALVES



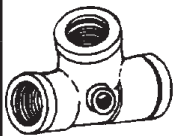
Poly Nozzle (Ball) Valve

Size	Part No.
2" Full Port	VXA-204-FP
Price: \$52.20	



Union Ball Valve

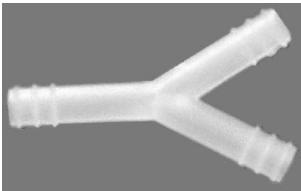
Size	Part No.	Price
1/2"	050-SUBV	\$10.20
3/4"	075-SUBV	\$11.90
1"	100-SUBV	\$14.40
1 1/4"	125-SUBV	\$23.60
1-1/2"	150-SUBV	\$29.50
2"	200-SUBV	\$38.60
2"	3-Way Valve	\$56.20



Size	Part No.	Price
3/4"	TT12	\$4.60

Female National Pipe Thread Tee with 1/4" Gauge Port

Y FITTINGS



Y Barb Fitting
1/4" .. \$2⁸⁰
3/8" .. \$2⁸⁰

Plastic Ties

In packages of 100



7"----- 50#\$6.95
11" --- 50#\$9.45
14" --- 120#\$16.60

LINE STRAINERS



1 1/4" - 2" Polypropylene Line Strainer

1-1/4" Line Strainer w/ 50 Mesh Screen	LS-125-50	\$21.10
1-1/2" Line Strainer w/ 50 Mesh Screen	LS-150-50	\$44.40
2" Line Strainer w/ 50 Mesh Screen	LS-200-50	\$44.40
20 Mesh Screen only	LS-220	\$25.30
50 Mesh Screen only	LS-240	\$25.20
80 Mesh Screen only	LS-280	\$25.20
LS-200/G	Gasket	\$2.90

Nylon Line Strainer

3/4" and 1"

3/4" Nylon Strainer w/ 40 Mesh Screen	\$15.00
1" Nylon Strainer w/ 40 Mesh Screen	\$15.00
40 Mesh Screen	\$7.30
80 Mesh Screen only	\$7.30
Gasket	\$1.80



POLYPROPYLENE and NYLON PIPE FITTINGS



Pipe Nipples

Size	Part No.	Price
1/4" x Close	TN5044	60¢
3/8" x Close	TN5066	\$1.00
1/2" x Close	TN5088	\$1.10
3/4" x Close	TN51212	\$1.20
1" x Close	TN51616	\$1.60
1-1/4" x Close	TN52020	\$1.90
1-1/2" x Close	TN52424	\$2.90
2" x Close	TN53232	\$3.80
3" x Close	TN54848	\$12.80



Hexagon Head Bushing MNPT x FNPT

Size	Part No.	Price
1/2" x 3/8"	RB86	\$1.30
3/4" x 1/4"	RB124	\$1.30
3/4" x 1/2"	RB128	\$1.30
1" x 3/4"	RB1612	\$1.40
1-1/4" x 3/4"	RB2012	\$2.25
1-1/4" x 1"	RB2016	\$2.10
1-1/2" x 3/4"	RB2412	\$2.40
1-1/2" x 1-1/4"	RB2420	\$2.40
2" x 1-1/4"	4B3220	\$3.60
2" x 1-1/2"	RB3224	\$3.60
3" x 2"	RB4832	\$12.60



Reducing Pipe Nipples

Size	Part No.	Price
3/4" x 1/2"	TRN60128	\$1.80
1" x 3/4"	TRN601612	\$3.95
1-1/4" x 1"	TRN602016	\$3.95



Pipe Couplings FNPT x FNPT

Size	Part No.	Price
1/2"	CC88	\$3.10
3/4"	CC1212	\$3.20
1"	CC1616	\$4.50
1-1/4"	CC2020	\$5.10
1-1/2"	CC2424	\$5.40
2"	CC3232	\$5.90



Female National Pipe Thread Tee

Size	Part No.	Price
1/4"	TT4	\$3.10
1/2"	TT8	\$3.30
3/4"	TT12	\$4.65
1"	TT16	\$7.40
1-1/4"	TT20	\$8.90
1-1/2"	TT24	\$12.40
2"	TT32	\$12.90
3"	TT48	\$44.60



Female National Pipe Thread 90° Elbow

Size	Part No.	Price
1/2"	EL88	\$2.90
3/4"	EL1212	\$3.20
1"	EL1616	\$4.40



90° Street Elbow

Size	Part No.	Price
1/4"	SE44	\$2.20
1/2"	SE88	\$2.85
3/4"	SE1212	\$3.40
1"	SE1616	\$4.50
1-1/4"	SE2020	\$6.55
1-1/2"	SE2424	\$7.75
2"	SE3232	\$9.90
3"	SE4848	\$47.80



Pipe Plug

Size	Part No.	Price
1/4"	TP4004	50¢
1/2"	TP4008	50¢
3/4"	TP4012	.60¢
1"	TP4016	80¢
1-1/4"	TP4020	\$1.30
1-1/2"	TP4024	\$1.90
2"	TP4032	\$2.30
3"	TP4048	\$16.90



Male National Pipe

Size	Part No.	Price
3" x 3"	TA104848	\$12.60
2" x 2"	TA103232	\$3.40
1-1/2" x 1-1/2"	TA102424	\$2.90
1-1/2" x 1-1/4"	TA102420	\$1.95
1-1/4" x 1-1/2"	TA102024	\$1.95
1-1/4" x 1-1/4"	TA102020	\$1.90
1-1/4" x 1"	TA102016	\$1.70
1-1/4" x 3/4"	TA102012	\$1.70
1" x 1-1/4"	TA101620	\$1.80
1" x 1"	TA101616	\$1.20
1" x 3/4"	TA101612	95¢
3/4" x 3/8"	TA10126	60¢
3/4" x 1/2"	TA10128	60¢
3/4" x 5/8"	TA101210	65¢
3/4" x 3/4"	TA101212	65¢
3/4" x 1"	TA101216	65¢
1/2" x 1/4"	TA1084	50¢
1/2" x 3/8"	TA1086	50¢
1/2" x 1/2"	TA1088	50¢
1/2" x 5/8"	TA10810	60¢
1/2" x 3/4"	TA10812	60¢
3/8" x 1/4"	TA1064	45¢
3/8" x 3/8"	TA1066	45¢
3/8" x 1/2"	TA1068	45¢
1/4" x 1/4"	TA1044	45¢
1/4" x 3/8"	TA1046	45¢
1/4" x 1/2"	TA1048	45¢
1/8" x 1/4"	TA1024	45¢
1/8" x 3/8"	TA1026	45¢

Polypropylene and Nylon Pipe Fittings



Male National Pipe Thread x Hose Barb 90° Elbow

Size	Part No.	Price
3" x 3"	TE104848	\$38.90
2" x 2"	TE203232	\$4.40
1-1/2" x 1-1/2"	TE202424	\$2.90
1-1/4" x 1-1/2"	TE202024	\$2.95
1-1/4" x 1-1/4"	TE202020	\$2.40
1-1/4" x 1"	TE202016	\$2.40
1-1/4" x 3/4"	TE202012	\$2.90
1" x 1"	TE201616	\$1.70
1" x 3/4"	TE201612	\$1.70
3/4" x 3/8"	TE20126	\$1.00
3/4" x 1/2"	TE20128	\$1.00
3/4" x 5/8"	TE201210	\$1.05
3/4" x 3/4"	TE201212	\$1.05
3/4" x 1"	TE201216	\$1.40
1/2" x 1/4"	TE2084	\$1.00
1/2" x 3/8"	TE2086	\$1.00
1/2" x 1/2"	TE2088	\$1.00
1/2" x 5/8"	TE20810	\$1.00
1/2" x 3/4"	TE20812	\$1.00
3/8" x 3/8"	TE2066	80¢
3/8" x 1/2"	TE2068	80¢
1/4" x 1/4"	TE2044	70¢
1/4" x 3/8"	TE2046	70¢
1/4" x 1/2"	TE2048	80¢

Hose Barb x Hose Barb 90° Elbow



Size	Part No.	Price
1/2" x 1/2"	TE2088T	75¢
3/4" x 3/4"	TE201212T	\$1.00
1" x 1"	TE201616T	\$1.50
1-1/4" x 1-1/4"	TE202020T	\$4.20
1-1/2" x 1-1/2"	TE202424T	\$4.20
2" x 2"	TE203232T	\$8.10

Swivel Nuts for Barbs Below



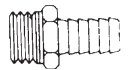
3/4" FGHT	GHN12	\$1.00
3/4" FNPT	RN12	\$1.00

Swivel Barbs for Nuts Above



1/4" Swivel	GHA4	80¢
3/8" Swivel	GHA6	80¢
1/2" Swivel	GHA8	80¢
5/8" Swivel	GHA10	80¢
3/4" Swivel	GHA12	80¢

Male Garden Hose Thread x Hose Barb



3/4" X 3/8"	GA106	90¢
3/4" X 1/2"	GA108	90¢
3/4" X 5/8"	GA1010	90¢
3/4" X 3/4"	GA1012	90¢

Female National Pipe Thread x Hose Barb 90° Elbow



3/4" X 1/2"	TO234	\$1.90
3/4" X 3/4"	TO434	\$1.90

Sprayer Hoses

EPDM Lasso Resistant Rubber Hose



I.D. Size	Price/Foot
1/4"	56¢
3/8"	62¢
1/2"	92¢
5/8"	\$1.18
3/4"	\$1.36
1"	\$1.70
1-1/4"	\$3.65
1-1/2"	\$4.85
2"	\$5.90

**10%
DISCOUNT
ON FULL
ROLLS**

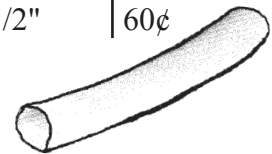
EPDM Suction Hose w/ Poly Spiral Braid (Chemical)

I.D. Size	Price/Foot
1"	\$1.95
1-1/4"	\$2.40
1-1/2"	\$2.70
2"	\$3.45
3"	\$7.45



EVA Ammonia and Chemical Hose

3/8"	48¢
1/2"	60¢



Clamps

T-Bolt Hose Clamps



- Stainless steel band
- 360° sealing surface

Hose:



1-1/2"	\$3.80
2"	\$3.95
3"	\$4.65




Stainless Steel Worm Driven Hose Clamps




Hose Size	Part No.	Price
3/8"	M6	65¢
1/2"	6	65¢
5/8"	12	80¢
3/4"	12	80¢
1"	16	90¢
1¼"	20	90¢
1½"	28	95¢
2"	32	95¢





Hose Clamp

Hose Barb Tee		
Size	Part No.	Price
1/4" x 1/4" x 1/4"	TT9444	90¢
3/8" x 3/8" x 3/8"	TT9666	90¢
1/2" x 1/2" x 1/2"	TT9888	90¢
1/2" x 1/2" x 3/8"	TT9688	\$1.00
1/2" x 1/2" x 3/4"	TT91288	\$1.60
5/8" x 5/8" x 5/8"	TT9101010	\$1.00
3/4" x 3/4" x 3/4"	TT9121212	\$1.15
1" x 1" x 1"	TT9161616	\$1.90
1-1/4" x 1-1/4" x 1-1/4"	TT9202020	\$3.60
1-1/2" x 1-1/2" x 1-1/2"	TT9242424	\$4.80
2" x 2" x 2"	TT9323232	\$9.20
NOZZLE BODIES		
	Hose Barb Nozzle Body Tee	
	3/8" Hose	TO1EL \$1.10
	1/2" Hose	TO3EL \$1.20

NOZZLE CAPS			
	Adapter Nozzle Cap Thread x 1/4" FNPT		
	Size	Part No.	Price
	Adapter	TO3AD	\$1.20
	Nozzle Cap (Swivel Nut)		
	Nozzle Cap	TO3CA	40¢
	Swivel Barb (fits Nozzle Cap)		
	3/8"	T3638	70¢
	1/2"	T3612	70¢

HOSE INSERTS			
Hose Menders			
Size	Part No.	Price	
1/4"	TC7044	50¢	
3/8"	TC7066	50¢	
1/2"	TC7088	55¢	
5/8"	TC71010	65¢	
3/4"	TC71212	75¢	
1"	TC71616	85¢	
1-1/4"	TC72020	\$1.80	
1-1/2"	TC72424	\$2.60	
2"	TC73232	\$6.40	
3"	TC74848	\$12.80	
Hose Barb Nozzle Body Straight			
3/8" Hose Barb	TO1ST	95¢	
1/2" Hose Barb	TO3ST	1.10	
Hose Barb Nozzle Body Tee			
3/8" Hose	TO1TE	\$1.25	
1/2" Hose	TO3TE	\$1.30	

Upper and Lower Clamp and Screw		
	Part No.	Price
	AA111-SQ-1	\$2.90
	AAA111-SQ-1-1/4	\$2.90
	Part No.	Price
	AAA111-3/4	\$2.70
	AAA111-1	\$2.70

QJ 360 Series\$13⁶⁰

w/ hose shank

- ~ Multiple nozzle body available in a 3-, 4-, or 5-nozzle body
- ~ Specify hose size and single- or double-shank



QJ364
w/ hose shank



QJ363
for wet boom

QJ 360 Series for Wet Booms\$10⁹⁰

Available for 3/4" and 1" pipe

24230 Triple Nozzle Body \$14⁹⁵

Specify hose size and single- or double-shank



24230-2

193 Series \$6⁹⁵

The diaphragm check valve is located below the boom mount.

Specify hose size and single- or double-shank



19350

222 Series \$5⁷⁵

The diaphragm check valve is located on top of the boom mount.

Specify hose size and single- or double-shank



22252

186 Series \$2⁹⁰

QuickJet Nozzle Body

Specify hose size and single- or double-shank



18636

QJ Vari-Spacing Clamps\$1⁹⁵

QJ111 Round Clamps available in 1/2, 3/4, 1, 1-1/4

QJ111SQ Square Clamps available in 3/4, 1, 1-1/4, 1-1/2

****Be sure to specify round or square, and size**



QJ111



QJ111SQ

Diaphragms



CP21953-EPR Diaphragm EPDM Rubber 57¢







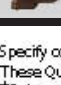
CP21953-VI Diaphragm Viton \$1.20

CAPS / QuickJet Boom Component / CAPS

(color charts adapted from teejet.com)

Color Code

1	2	3	4	5	6	7	8	9	10
Black	White	Red	Blue	Green	Yellow	Brown	Orange	Gray	Violet

QUICK TEEJET CAPS	PART NUMBER		FOR USE WITH FLAT SPRAY TIPS 300 PSI (20 BAR) MAXIMUM PRESSURE	
	QUICK TEEJET CAP ONLY	QUICK TEEJET CAP & SEAT GASKET SET		
	CP25611-1-NY	25612-1-NYR	TeeJet Flat Spray Tips (Smaller Capacities) TP Standard -0067 Thru -08 XR -01 Thru -08 DG TeeJet® TT Turbo TwinJet® A/R TeeJet® OC TeeJet® -01 Thru -08	85¢
	CP25609-1-NY	25610-1-NYR	TeeJet Flat Spray Tips (Larger Capacities) TP Standard -10 Thru -20 XR -10 Thru -15	85¢
	CP25597-1-NY	25598-1-NYR	TJ TwinJet® AITeeJet® & AIUB TeeJet® SJ-3 StreamJet® DGTwinJet® Turbo TeeJet Induction®	85¢
	CP25595-1-NY	25596-1-NYR	TeeJet Flat Spray Tips (Smaller Capacities) Tips can be positioned in choice of two spray plane directions—parallel or perpendicular to wings of Quick TeeJet cap.	85¢
	CP25599-1-NY	25600-1-NYR	Turbo HoodJet® VisiFlo® Spray Tip TK-VS HoodJet® VisiFlo Spray Tip Locating Nib	85¢
	CP25607-1-NY	25608-1-NYR	TK HoodJet® FL FullJet® TX ConeJet® TG Full Cone Hose Shank	85¢
	CP25607-1-NY	—	D-Disc Core Seal CP18999-EPR (EPDM standard) CP18999-VI (Nylon optional) Used with DC-Core Inserts and CP4916 Flow Regulators (Insert Core into Seal)	85¢

*Specify color code (see chart). Unless otherwise specified, a yellow (6) cap will be supplied. Violet (10) only available in CP25611 and CP25597 Nylon caps.

†These Quick TeeJet caps available only in black.

††Polypropylene Quick TeeJet caps available only in gray.

Quick TeeJet Cap



CP19438-EPR
(EPDM Standard)

CP19438-VI
(Nylon Optional)

The Quick TeeJet caps are designed with grooves that fit locating lugs on the nozzle body. Caps are made of Nylon and are available for use with all TeeJet® spray tips. Maximum operating pressure of 300 PSI (20 bar).

How to order:

For cap and seat gasket set, specify set number and color code.

Example: 25612-3-NYR

For cap only, specify part number and color code.

Example: CP25597-4-NY

For seat gasket, specify part number.

Example: CP19438-EPR

Adapter Cap



Quick TeeJet Outlet Adapter with EPDM Seat Gasket, Black

Part No.

QJ4676-1/4-NYR

\$1.70

Shut-Off Cap



Quick TeeJet Shut-Off Cap and Seal Gasket Set

Part No.

19843-NYR

\$1.65

Cap Gaskets

40¢

Typical Applications:

- Boomless field spray applications
- Roadside and right-of-way applications
- End row spraying

Features:

- Unique orifice geometry produces wide spray pattern while maintaining superior distribution across entire width
- Pre-orifice design minimizes drift
- Extra wide spray pattern--up to 18.5 feet--using a single nozzle

Boomless Tips





Tip sprays one direction. Use an L and an R tip to spray each direction and double width.

TIPO	PSI	DROPSIZE	CAPACITY ONE NOZZLE IN GPM	SPRAY WIDTH "W" (FEET)		HEIGHT "Y" = 24"										HEIGHT "Y" = 36"									
						GPA FOR ONE NOZZLE					GALLONS PER 1000 SQ. FT.					GPA FOR ONE NOZZLE					GALLONS PER 1000 SQ. FT.				
				24" HEIGHT	36" HEIGHT	4 MPH	6 MPH	8 MPH	10 MPH	15 MPH	20 MPH	2 MPH	3 MPH	4 MPH	5 MPH	4 MPH	6 MPH	8 MPH	10 MPH	15 MPH	20 MPH	2 MPH	3 MPH	4 MPH	5 MPH
(B)1/4XP10R	20	UC	0.71	8.5	10.0	10.3	6.9	5.2	4.1	2.8	2.1	0.47	0.32	0.24	0.19	8.8	5.9	4.4	3.5	2.3	1.8	0.40	0.27	0.20	0.16
(B)1/4XP10L	30	UC	0.87	10.0	11.0	10.8	7.2	5.4	4.3	2.9	2.2	0.49	0.33	0.25	0.20	9.8	6.5	4.9	3.9	2.6	2.0	0.45	0.30	0.22	0.18
(B)1/4XP10L	40	UC	1.00	11.0	12.5	11.3	7.5	5.6	4.5	3.0	2.3	0.52	0.34	0.26	0.21	9.9	6.6	5.0	4.0	2.6	2.0	0.45	0.30	0.23	0.18
\$36 ⁰⁰	50	UC	1.12	12.5	13.5	11.1	7.4	5.5	4.4	3.0	2.2	0.51	0.34	0.25	0.20	10.3	6.8	5.1	4.1	2.7	2.1	0.47	0.31	0.24	0.19
	60	UC	1.22	13.0	14.5	11.6	7.7	5.8	4.6	3.1	2.3	0.53	0.35	0.27	0.21	10.4	6.9	5.2	4.2	2.8	2.1	0.48	0.32	0.24	0.19
(B)1/4XP20R	20	UC	1.42	9.0	11.0	19.5	13.0	9.8	7.8	5.2	3.9	0.89	0.60	0.45	0.36	16.0	10.7	8.0	6.4	4.3	3.2	0.73	0.49	0.37	0.29
(B)1/4XP20L	30	UC	1.75	11.5	12.0	18.8	12.6	9.4	7.5	5.0	3.8	0.86	0.57	0.43	0.34	18.0	12.0	9.0	7.2	4.8	3.6	0.83	0.55	0.41	0.33
(B)1/4XP20L	40	UC	2.00	13.5	14.0	18.3	12.2	9.2	7.3	4.9	3.7	0.84	0.56	0.42	0.34	17.7	11.8	8.8	7.1	4.7	3.5	0.81	0.54	0.40	0.32
\$36 ⁰⁰	50	UC	2.25	14.5	15.0	19.2	12.8	9.6	7.7	5.1	3.8	0.88	0.59	0.44	0.35	18.6	12.4	9.3	7.4	5.0	3.7	0.85	0.57	0.43	0.34
	60	UC	2.50	15.0	16.0	21	13.8	10.3	8.3	5.5	4.1	0.94	0.63	0.47	0.38	19.3	12.9	9.7	7.7	5.2	3.9	0.89	0.59	0.44	0.35
(B)1/2XP40R	20	UC	2.87	11.0	12.0	32	22	16.1	12.9	8.6	6.5	1.5	0.99	0.74	0.59	30	19.7	14.8	11.8	7.9	5.9	1.4	0.90	0.68	0.54
(B)1/2XP40L	30	UC	3.53	13.0	14.5	34	22	16.8	13.4	9.0	6.7	1.5	1.0	0.77	0.62	30	20	15.1	12.1	8.0	6.0	1.4	0.92	0.69	0.55
(B)1/2XP40L	40	UC	4.00	14.0	15.5	35	24	17.7	14.1	9.4	7.1	1.6	1.1	0.81	0.65	32	21	16.0	12.8	8.5	6.4	1.5	0.97	0.73	0.58
\$42 ⁹⁵	50	UC	4.55	15.0	16.0	38	25	18.8	15.0	10.0	7.5	1.7	1.1	0.86	0.69	35	23	17.6	14.1	9.4	7.0	1.6	1.1	0.81	0.64
	60	UC	5.00	16.0	17.5	39	26	19.3	15.5	10.3	7.7	1.8	1.2	0.89	0.71	35	24	17.7	14.1	9.4	7.1	1.6	1.1	0.81	0.65

Spraying Systems Co. TeeJet Tips and Nozzles

Tips and Nozzles		Size	Orifice Insert/Tip Body Material	Example Tip No.	Price each
	XR TeeJet Extended Range Tips (Tapered Flat Spray)	-01 and larger	Stainless Steel/ Celcon	XR8001-VS	\$4.20
	AIXR Air Induction XR Flat Spray	all sizes	UHMWPE Polymer (110° only)	AIXR11004-VP	\$4.40
	Turbo TeeJet Spray Tip (Wide Angle Flat Spray)	all sizes	Polymer (110° only)	TT11001-VP	\$3.95
	Turbo TeeJet Induction Air Induction Spray Tip	all sizes	Polymer (110° only)	TTI11004-VP	\$6.80
	AI Turbo TwinJet Twin Flat Spray Tip	all sizes	Polymer (110° only)	AITTJ60-11004-VP	\$4.90
	TwinJet Spray Tips (Twin Tapered Flat Spray)	all sizes	Stainless Steel/ Celcon	TJ60-8003-VS	\$7.40
	Turbo FloodJet Spray Tips (Wide Angle Flat Spray)	all sizes	Stainless Steel/ Celcon w/ Polymer Pre-Orifice	TF-VS4	\$7.90
	A1 TeeJet Spray Tips (Tapered Flat Spray) VisiFlo Color Coded	-015 thru -10	Stainless Steel/ Celcon	AI110015-VS	\$7.95
	TeeJet Orifice Plates	all sizes	Stainless Steel	CP4916-49	\$2.30
	Blank Disc	one size fits all	Polypropylene		35¢

	Nozzle Strainers			Check Valve Strainers			
	Part No.	Descr.	Price	Part No.	Descr.	Price	
	SN 50	50 Mesh	90¢	4193A-PP-50	50 Mesh	\$2.80	
	SN 100	100 Mesh	90¢	4193A-PP-100	100 Mesh	\$2.80	

TriggerJet Spray Gun

Features:

- ◆ 15" extension wand
- Includes ConeJet spray tips with a 30° offset
- Trigger lock permits locking gun in an open position for continuous flow
- Replaceable internal working components
- Maximum operating pressure--100 psi (7 bar)
- 3/8" hose shank connection
- Accepts all standard Spraying Systems Co. spray tips and tip strainers
- Lightweight design for use with backpack, canister or other low-pressure sprayers



\$12⁵⁰

No. 5500 Adjustable Tips

Polypropylene or Brass



Adjustable ConeJet Tips fit standard TeeJet Spray Nozzle body.

#5500-X__ Brass Adjustable Tip..... \$14.80
#5500-PPB-X__ Polypropylene Adjustable Tip.. \$6.20

Spray Gun



#1700-02-013

13" Super-Jet Aluminum Trigger Spray Gun with thermal plastic handle and dripless shut-off at nozzle.

1" aluminum barrel, 800 psi, 8 GPM and #5 hardened stainless steel D-disc.
1/2" female pipe thread.

#1700-02-013 TriggerJet

\$39⁹⁰

TriggerJet #22670 Spray Gun



22670 Trigger Jet

22670-PP Includes:

- ◆ 22650 TriggerJet Spray Gun (1/4" FNPT only)
- ◆ 8079 50 Mesh Strainer
- ◆ 5500 PPB-8X Adjustable ConeJet Spray Tip
- ◆ Straight and 45° adapter
- ◆ Maximum Operating Pressure, 150 psi

Trigger Jet No.	Extension Length	List Price
22670-PP-15-1/4	15"	\$31.70

The 22670 TriggerJet spray gun kit combines the 22650 TriggerJet spray gun with an extension wand and the items listed in features. Maximum pressure rating 150 psi (10 bar).

Features:

- 22650 TriggerJet spray gun with a 1/4" BSPT (F) thread inlet connection
- Trigger lock permits locking gun in an open position for continuous flow (optional)
- #22665, 15" extension wand
- 8079-50-PP tip strainer
- 5500-PPB-X8-VI adjustable ConeJet spray tip with Viton® o-ring
- CP22673-PP 45° and CP22664-PP straight adapters (other capacities available)
- Accepts all standard Spraying Systems Co. spray tips and tip strainers

RECTANGULAR TANKS



20 Gallon Tank
14" x 28" x 12"
\$93⁵⁸

12 Gallon Tank
14" x 18" x 12"
\$70²⁸

POLY TANKS

SPOT SPRAYER TANKS



15 Gallon
14" x 30" x 14"
\$59⁴⁰

25 Gallon
18" x 34" x 18"
\$79²⁷



2½-Gallon Rectangle
7" x 15" x 14"
\$42⁵⁴

CONE BOTTOM TANKS

5 Gallon Square
11" x 11" x 20"
\$65⁸⁴

10 Gallon Square
13" x 13" x 21"
\$91²⁸



60 Gallon
24" x 36" x 26"
\$106⁵⁴

40 Gallon
24" x 36" x 19"
\$85⁶⁰



3½-Gallon Round
11" x 16"
\$43⁴⁸

THREAD SEALANTS



Teflon Tape, 1/2" x 520"
\$1.20



Teflon Thread Sealant

4 oz. can \$12.80
8 oz. can \$21.90
2 oz. tube \$ 6.60

HOTLINE

Defoamer/Anti-Foaming Agent



Prevents foam over and foam damage to chemical when filling/mixing.
Spray to knock down foam or pretreat to prevent production

1 gallon **\$38⁰⁰**

NEUTRA-CHEM

Tank and Equipment Cleaner

Designed for cleaning tanks, lines and nozzles to remove pesticide, herbicide and fertilizer residues.



2 lb. container ... **\$12⁹⁰**



Inductors

Inductors	Tank w/ Stand	Tank, Stand, Valves, and Rinse Nozzle
15 gallon	\$152 ⁰⁰	\$242 ⁰⁰
30 gallon	\$180 ⁰⁰	\$270 ⁰⁰

Blow Molded Inductor Tank Sets

Tank Sets	Tank w/ poly legs	Tank, Legs, Valves, and Rinse Nozzle
35 gallon	\$175 ⁰⁰	\$265 ⁰⁰
60 gallon	\$205 ⁰⁰	\$295 ⁰⁰



Installs on the discharge side of a pump, which keeps pump and water tank free of chemical contamination.

Plumbed to bypass inductor for faster transferring of water only.

2" barbed fittings, standard

Venturi Kit

\$298⁰⁰



Measuring Pitcher

128 oz.

\$18.90



Boom Wheel Kit

\$195⁰⁰ / pair

Applicable to most spray booms.

