

**Models: BC-280-PP, BC-ENC-PP, BC-280-PVDF, BC-ENC-PVDF, BC2-280-PP, BC2-ENC-PP, BC2-280-PVDF, BC2-ENC-PVDF, BC-A1-PP, BC-A1-PVDF, BC2-A1-PP & BC2-A1-PVDF**

**Turbine Low Viscosity Batch Control System Spare Parts Lists**

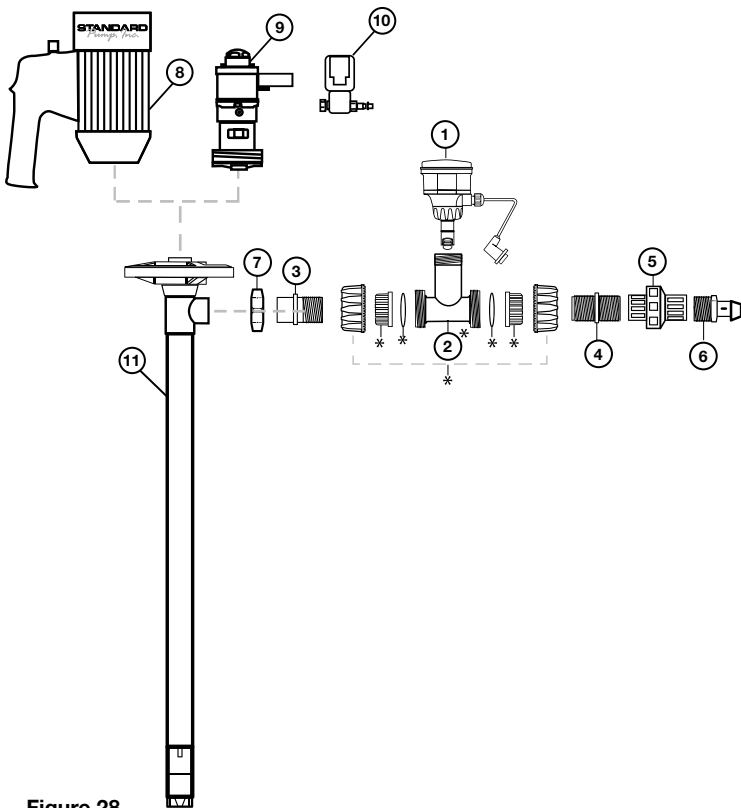


Figure 28

**Batch Control System** See Figure 28

Ref. #	Description	P/N for Electric BCS	P/N for Air BCS	Qty
1	Batch Control Module, 110-120V / 220-240V (Cable Connection Included)	F101	-	1
	Batch Control Module, 110-120V (Power Cord Included)		F102	1
	Batch Control Module, 220-240V (Power Cord Included)		F102	1
<b>Polypropylene</b>				
-	1" PP T Assembly (Includes Items 2-7)	TEBPPFC	TEBPPFC	1
2	1" PP T with FNPT Ends*	TEB010VT	TEB010VT	1
3	1" PP MNPT Pump Outlet Fitting	US61652	US61652	1
4	1" PP MNPT Nipple	NIP100-SH	NIP100-SH	1
5	1" PP Check Valve	US61655	US61655	1
6	1" PP MNPT Hose Barb Fitting	US61659	US61659	1
7	PP Wing Nut	1106	1106	1
<b>PVDF</b>				
-	1" PVDF T Assembly (Includes Items 2-7)	TEKPVDFFC	TEKPVDFFC	1
2	1" PVDF T with FNPT Ends*	TEK010VT	TEK010VT	1
3	1" PVDF MNPT Pump Outlet Fitting	US61661	US61661	1
4	1" PVDF MNPT Nipple	4884-020	4884-020	1
5	1" PVDF Check Valve	US61664	US61664	1
6	1" PVDF MNPT Hose Barb Fitting	US61665	US61665	1
7	PVDF Wing Nut	4106	4106	1
<b>Electric Motors</b>				
8	Open Drip Proof (IP44) 110-120V/1/50-60Hz with BCS Port	SP-280P-BC	-	1
	Open Drip Proof (IP44) 220-240V/1/50-60Hz with BCS Port	SP-280P-2-BC	-	1
	Refer to Page 14 for Spare Parts			
	TEFC (IP54) 110-120V/1/50-60Hz with BCS Port	SP-ENC-BC	-	1
	TEFC (IP54) 220-240V/1/50-60Hz with BCS Port	SP-ENC-2-BC	-	1
	Refer to Page 14 for Spare Parts			
<b>Air Motor &amp; Solenoid</b>				
9	Air Motor, 1/2 HP (370 W)	-	SP-A1	1
	Refer to Page 15 For Spare Parts			
10	Solenoid Valve Kit, SS316			1
	110-120V	-	0021SS	1
	220-240V	-	0021SS-2	1
<b>Pump Tubes</b>				
11	Polypropylene Drum Pump Tube	See Page 16	See Page 16	1
	PVDF Drum Pump Tube			

\* Items marked with an asterisk belong to the same assembly.

**Models: BC-280-PP, BC-ENC-PP, BC-280-PVDF, BC-ENC-PVDF, BC2-280-PP, BC2-ENC-PP, BC2-280-PVDF, BC2-ENC-PVDF, BC-A1-PP, BC-A1-PVDF, BC2-A1-PP & BC2-A1-PVDF**

**Electric Motors Spare Parts Lists**

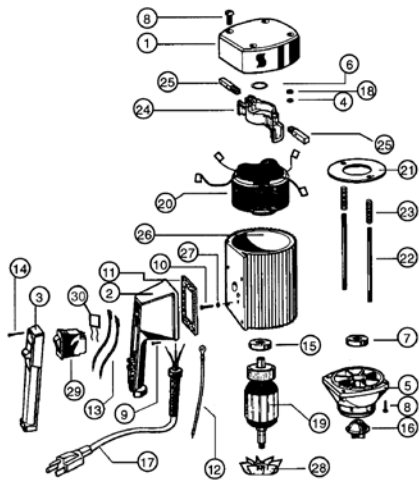


Figure 29– SP-280P

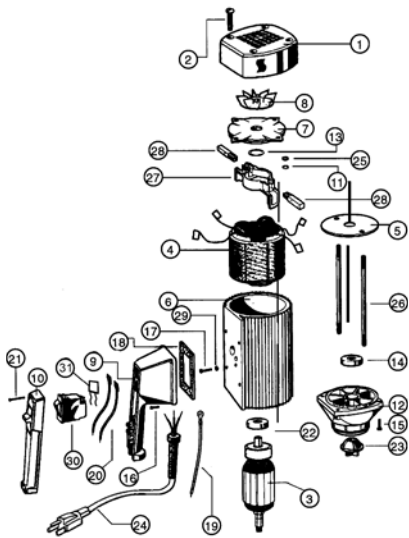


Figure 30 – SP-ENC

**SP-280P** See Figure 29

Ref. #	Description	P/N for SP-280P	Qty
1	Motor Cover	8000	1
2	Switch Housing	8001	1
	Switch Housing for Variable Speed, Includes Potentiometer and BCS Port Connection		
	110-120V	8004	1
	220-240V	8005	1
3	Switch Cover	8002	1
4	Lock Washer	8071	2
5	Lower Housing	8100	1
6	Wave Washer	8125	1
7	Ball bearing	8126	1
8	Screw for Plastic Housing	8130P	8
9A	Screw, 110-120V	8131	4
9B	220-240V	8131LVR	4
10	Ground Screw	8162	1
11	Gasket, 110-120V	8167	1
	220-240V	8167LVR	1
12	Earthing Lead	8183	1
13	Lead	8185	2
14	Screw	8220	5
15	Ball Bearing	8331	1
16	Motor Coupling	8333	1
17	Power Cord w/Strain Relief & Plug		
	110-120V	8360	1
	220-240V	8705	1
18	Hexagon Nut	8448	2
19	Armature, 110-120V	8502	1
	220-240V	8701	1
20	Stator, 110-120V	8503	1
	220-240V	8502	1
21	Guide Disc	8504	1
22	Rod Connector	8506	2
23	Pressure Spring	8507	2
24	Brush Holder	8508	1
25	Carbon Brush, 110-120V	8509	2
	220-240V	8703	2
26	Motor Housing, Plastic	8510P	1
27	Star Washer	8511	1
28	Fan	8512	1
29	Overload Switch, 8.5 amp 110-120V	8611	1
	5 amp 220-240V Low Voltage Release	8704LVR	1
30	EMI Filter	8003	1
31	Repair Kit 110-120V (includes PN's 8333 & (2) 8509)	9055	1
32	Repair Kit 220-240V (includes PN's 8333 & (2) 8703)	9056	1

**SP-ENC** See Figure 30

Ref. #	Description	P/N for SP-ENC	Qty
1	Motor Cover	3000	1
2	Screw, Motor Cover	3130	1
3	Armature, 110-120V	3502	1
	220-240V	3701	1
4	Stator, 110-120V	3503	1
	220-240V	3702	1
5	Guide Disc	3504	1
6	Motor Housing	3510	1
7	Bearing Cover	3511	1
8	Fan	3512	1
9	Switch Housing	8001	1
	Switch Housing for Variable Speed, Includes Potentiometer and BCS Port Connection		
	110-120V	8004	1
	220-240V	8005	1
10	Switch Cover	8002	1
11	Lock Washer	8071	2
12	Lower Housing	8100	1
13	Wave Washer	8125	1
14	Ball Bearing, Lower	8126	1
15	Screw, Lower Housing	8130	4
16	Screw, Switch Housing		
	110-120V	8131	4
	220-240V	8131LVR	4
17	Ground Screw	8162	1
18	Gasket, 110-120V	8167	1
	220-240V	8167LVR	1
19	Earthing Lead	8185	1
20	Lead	8183	2
21	Screw, Switch Cover	8220	5
22	Ball Bearing, Upper	8331	1
23	Motor Coupling	8333	1
24	Power Cord w/Strain Relief & Plug,		
	110-120V	8360	
	220-240V	8705	1
25	Hexagon Nut	8448	2
26	Rod Connector	3703	2
27	Brush Holder	8508	1
28	Carbon Brush, 110-120V	8509	2
	220-240V	8703	2
29	Star Washer	8511	1
30	Overload Switch, 8.5 amp 110-120V	8611	1
	5 amp 220-240V Low Voltage Release	8704LVR	1
31	EMI Filter	8003	1
32	Repair Kit 110-120V (includes PN's 8333 & (2) 8509)	9055	1
33	Repair Kit 220-240V (includes PN's 8333 & (2) 8703)	9056	1

SP-280P & SP-ENC Series motors should not be used to pump flammables.