

# TRI-GLIDE



# TRI-GLIDE

## 3-POINT MOVING SYSTEM

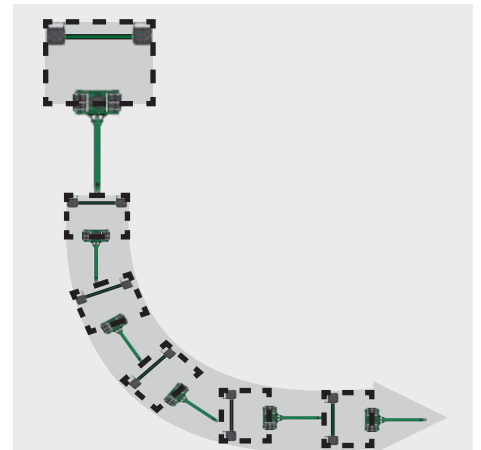
Placing the dollies in a 3-point configuration can stabilize the rollers and prevent them from slipping out, even under pulling and tugging forces.



Using Center of Gravity, the front unit is placed under then load.



Placing the dollies where support is needed ensures the rear dollies will be kept parallel in order to track properly when moving.

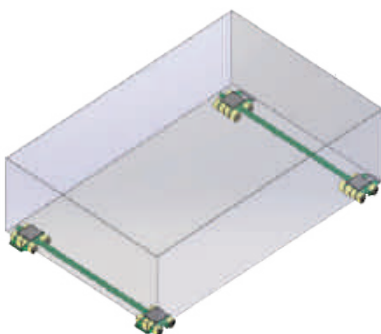


As the load is steered with the front unit, the rear dollies will follow, providing the user with a wide range of mobility.

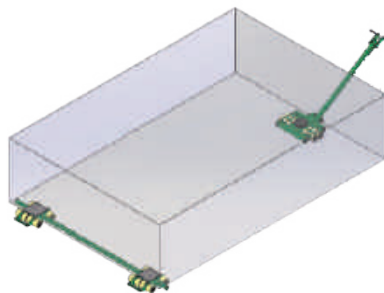
## CONFIGURATIONS

The Hilman Tri-Glide System is versatile in that the front and rear units can be combined and configured to further stabilize bulky loads.

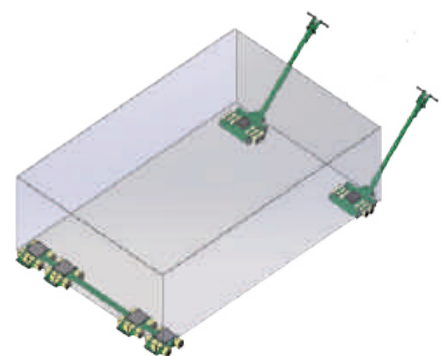
4-Point Moving Solution  
Two Rear Units with Spreader Bars



3-Point Moving Solution  
One Front Unit  
One Rear Unit with Spreader Bar



4-Point Moving Solution  
Two Front Units  
One Rear Unit with Spreader Bar

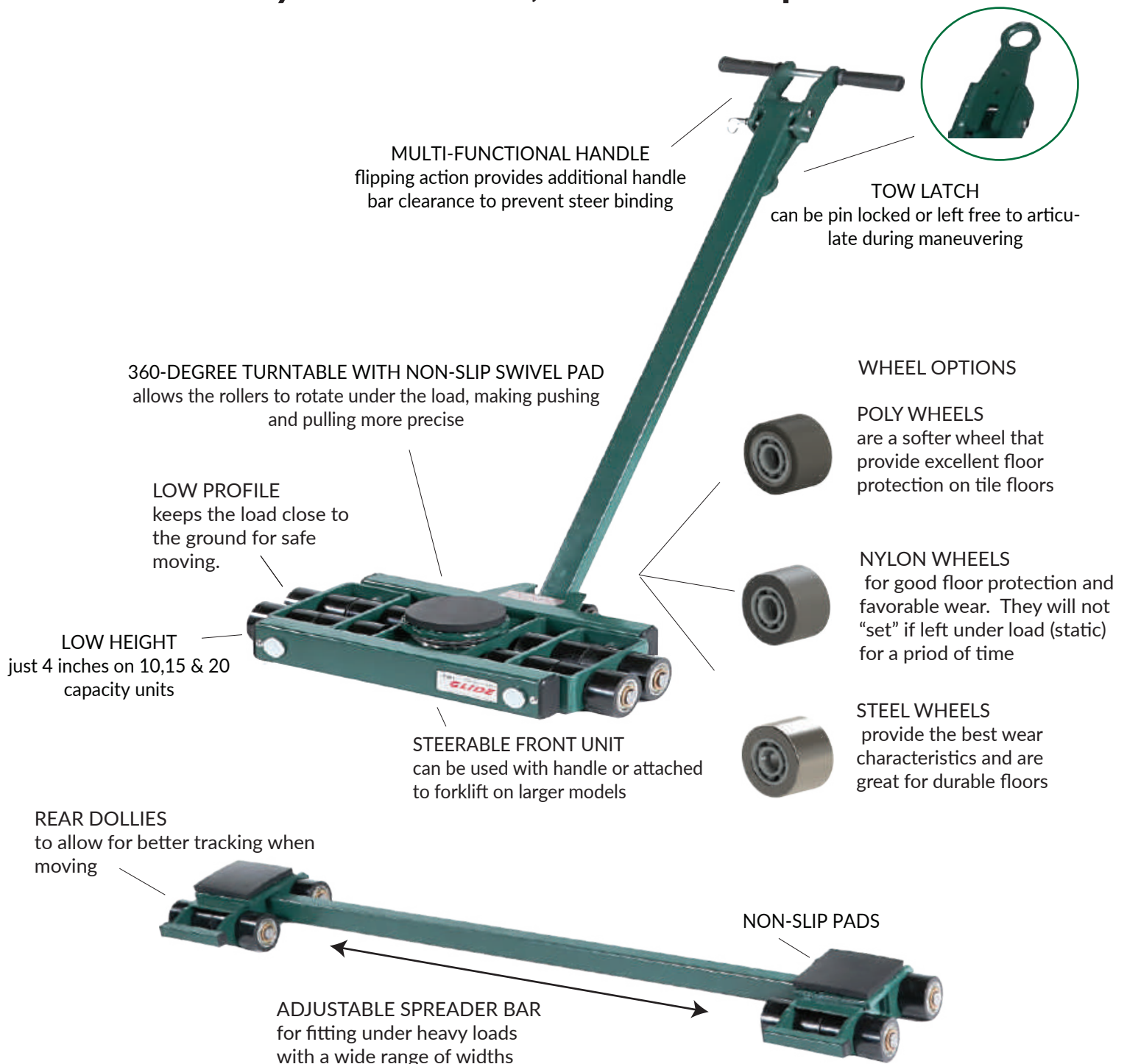


\*Images are for representation purposes only. Actual product configuration and support points will differ based on the load.

# ADVANTAGES

The Hilman Tri-Glide provides a stable, efficient solution for moving heavy loads. It is designed with a large footprint to spread the weight of the load over a greater area. Our Polyurethane and Nylon rollers are non-marking and can be used on a variety of floor surfaces.

## Easy Maneuverability, Maintenance Friendly, Easy to Assemble, No Tools Required!



# 10, 15 & 20 TON

Hilman Tri-Glide components can be purchased individually to accommodate user preference. All units come with non-slip pads for the front unit and rear dollies.

LOW HEIGHT  
FLOOR PROTECTION  
EASY 3 POINT SYSTEM

## Wheel Options

P-Poly N-Nylon S-Steel



## Kits

All kits include: (1) Front Unit with Handle and (2) Rear Dollies with a Spreader Bar

Hilman Part #	Capacity	Wheel Type	Wheel Count	Height (w/pad)	Height (w/o pad)	Weights (lbs.)	Handle Length	Alignment Bar
KTG-10N	10 Ton	Nylon	8/8	4.5" (114mm)	4" (102mm)	155	49.5" (1257mm)	60" (1524mm)
KTG-10P	10 Ton	Poly	8/8	4.5" (114mm)	4" (102mm)	161	49.5" (1257mm)	60" (1524mm)
KTG-10S	10 Ton	Steel	8/8	4.5" (114mm)	4" (102mm)	193	49.5" (1257mm)	60" (1524mm)
KTG-15N	15 Ton	Nylon	12/12	4.5" (114mm)	4" (102mm)	168	49.5" (1257mm)	60" (1524mm)
KTG-15P	15 Ton	Poly	12/12	4.5" (114mm)	4" (102mm)	181	49.5" (1257mm)	60" (1524mm)
KTG-15S	15 Ton	Steel	12/12	4.5" (114mm)	4" (102mm)	236	49.5" (1257mm)	60" (1524mm)
KTG-20N	20 Ton	Nylon	16/16	4.5" (114mm)	4" (102mm)	184	49.5" (1257mm)	60" (1524mm)
KTG-20P	20 Ton	Poly	16/16	4.5" (114mm)	4" (102mm)	198	49.5" (1257mm)	60" (1524mm)
KTG-20S	20 Ton	Steel	16/16	4.5" (114mm)	4" (102mm)	260	49.5" (1257mm)	60" (1524mm)

## Individual Front

Includes: (1) Front Unit with a Multi-functional Handle for pulling or towing

Hilman Part #	Capacity	Type	Width (in.)	Height (w/o pad)	Height (w/pad)	Wheel Size	Roller Type	Weight (lbs)
TG-F5N	5 Ton	Front	17.875"	4" (102mm)	4.5" (114mm)	Ø3.13" (79mm)	Nylon	96
TG-F5P	5 Ton	Front	17.875"	4" (102mm)	4.5" (114mm)	Ø3.13" (79mm)	Poly	99
TG-F5S	5 Ton	Front	17.875"	4" (102mm)	4.5" (114mm)	Ø3.13" (79mm)	Steel	115
TG-F7.5N	7.5 Ton	Front	22.6875"	4" (102mm)	4.5" (114mm)	Ø3.13" (79mm)	Nylon	106
TG-F7.5P	7.5 Ton	Front	22.6875"	4" (102mm)	4.5" (114mm)	Ø3.13" (79mm)	Poly	113
TG-F7.5S	7.5 Ton	Front	22.6875"	4" (102mm)	4.5" (114mm)	Ø3.13" (79mm)	Steel	145
TG-F10N	10 Ton	Front	26.6875"	4" (102mm)	4.5" (114mm)	Ø3.13" (79mm)	Nylon	113
TG-F10P	10 Ton	Front	26.6875"	4" (102mm)	4.5" (114mm)	Ø3.13" (79mm)	Poly	120
TG-F10S	10 Ton	Front	26.6875"	4" (102mm)	4.5" (114mm)	Ø3.13" (79mm)	Steel	151

## Individual Rear

Includes: (2) Rear Dollies with a Spreader Bar

Hilman Part #	Capacity	Type	Width (in.)	Height (w/o pad)	Height (w/pad)	Wheel Size	Roller Type	Weight (lbs)
TG-R5N	5 Ton	Rear	6.25"	4" (102mm)	4.5" (114mm)	Ø3.13" (79mm)	Nylon	59
TG-R5P	5 Ton	Rear	6.25"	4" (102mm)	4.5" (114mm)	Ø3.13" (79mm)	Poly	62
TG-R5S	5 Ton	Rear	6.25"	4" (102mm)	4.5" (114mm)	Ø3.13" (79mm)	Steel	78
TG-R7.5N	7.5 Ton	Rear	7.6875"	4" (102mm)	4.5" (114mm)	Ø3.13" (79mm)	Nylon	62
TG-R7.5P	7.5 Ton	Rear	7.6875"	4" (102mm)	4.5" (114mm)	Ø3.13" (79mm)	Poly	68
TG-R7.5S	7.5 Ton	Rear	7.6875"	4" (102mm)	4.5" (114mm)	Ø3.13" (79mm)	Steel	91
TG-R10N	10 Ton	Rear	9.6875"	4" (102mm)	4.5" (114mm)	Ø3.13" (79mm)	Nylon	71
TG-R10P	10 Ton	Rear	9.6875"	4" (102mm)	4.5" (114mm)	Ø3.13" (79mm)	Poly	78
TG-R10S	10 Ton	Rear	9.6875"	4" (102mm)	4.5" (114mm)	Ø3.13" (79mm)	Steel	109

# 24-80 Tons



## Kits

All kits include: (1) Front Unit with Handle and (2) Rear Dollies with a Spreader Bar

Hilman Part #	Capacity	Wheel Type	Wheel Count	Height (w/pad)	Height (w/o pad)	Weight (lbs)	Handle Length	Alignment Bar
KTG-24P	24 Ton	Poly	8/8	5.5" (140mm)	5.25" (133mm)	384	43.75" (1162mm)	72" (1829mm)
KTG-40P	40 Ton	Poly	16/16	5.5" (140mm)	5.25" (133mm)	467	43.75" (1162mm)	72" (1829mm)

## Individual Front

Includes: (1) Front Unit with a Tow Handle

Hilman Part #	Capacity	Type	Width (in.)	Height (w/pad):	Height (w/o pad):	Wheel Size	Roller Type	Weight (lbs)
TG-F12P	12 Ton	Front	26.875	5.5" (140mm)	5.25" (133mm)	Ø4.25" (108mm)	Poly	24
TG-F20P	20 Ton	Front	39.1875	5.5" (140mm)	5.25" (133mm)	Ø4.25" (108mm)	Poly	286

## Individual Rear

Includes: (2) Rear Dollies with a Spreader Bar

Hilman Part #	Capacity	Type	Width (in.)	Height (w/pad):	Height (w/o pad):	Wheel Size	Roller Type	Weight (lbs)
TG-R12P	12 Ton	Rear	8.25	5.5" (140mm)	5.25" (133mm)	Ø4.25" (108mm)	Poly	135
TG-R20P	20 Ton	Rear	14.1875	5.5" (140mm)	5.25" (133mm)	Ø4.25" (108mm)	Poly	181



## Kits

All kits include: (1) Front Unit with Handle and (2) Rear Dollies with a Spreader Bar

Hilman Part #	Capacity	Wheel Type	Wheel Count	Height (w/pad):	Height (w/o pad):	Weight (lbs)	Handle Length	Alignment Bar
KTG-60P	60 Ton	Poly	24/24	7.75" (197mm)	7.00" (178mm)	981	45.125" (1146mm)	96" (2438mm)
KTG-80P	80 Ton	Poly	32/32	7.75" (197mm)	7.00" (178mm)	1095	45.125" (1146mm)	96" (2438mm)

## Individual Front

Includes: (1) Front Unit with a Tow Handle

Hilman Part #	Capacity	Type	Width (in.)	Height (w/pad):	Height (w/o pad):	Wheel Size	Roller Type	Weight (lbs)
TG-F30P	30 Ton	Front	48.0625	7.75" (197mm)	7.00" (178mm)	Ø5.51" (140mm)	Poly	603
TG-F40P	40 Ton	Front	56.0625	7.75" (197mm)	7.00" (178mm)	Ø5.51" (140mm)	Poly	667

## Individual Rear

Includes: (2) Rear Dollies with a Spreader Bar

Hilman Part #	Capacity	Type	Width (in.)	Height (w/pad):	Height (w/o pad):	Wheel Size	Roller Type	Weight (lbs)
TG-R30P	30 Ton	Rear	17.25	7.75" (197mm)	7.00" (178mm)	Ø5.51" (140mm)	Poly	378
TG-R40P	40 Ton	Rear	21.0625	7.75" (197mm)	7.00" (178mm)	Ø5.51" (140mm)	Poly	428

Higher Tonnage available on request.

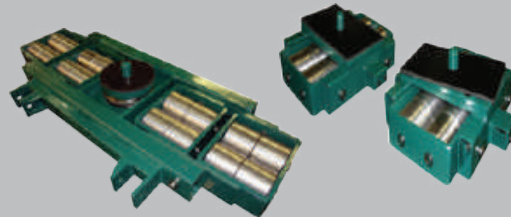
# MODIFICATIONS

The Hilman Tri-Glide can be modified in a number of ways to accommodate your specific application requirements. Custom turntables and special hole patterns, on the contact points, are just a couple of examples where users have made the Hilman Tri-Glide System a perfect fit. Hilman also manufactures completely custom Tri-Glide Solutions to meet specific performance requirements.

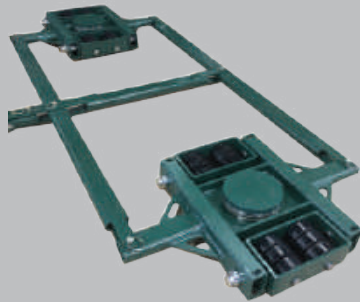
DIAMOND SWIVEL LOCKING TOPS



LOCATOR PINS FOR REAR DOLLIES



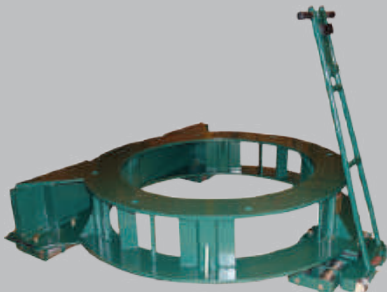
SPECIAL CONFIGURATIONS



CUSTOM ATTACHMENTS



CARTS



HYDRAULIC CYLINDERS





**HILMAN INC.**  
**12 Timber Lane**  
**Marlboro, New Jersey 07746**  
**USA**  
**Phone: +1-732-462-6277**  
**E-mail: [sales@hilmanrollers.com](mailto:sales@hilmanrollers.com)**  
**Website: [www.hilmanrollers.com](http://www.hilmanrollers.com)**

**ISO 9001**