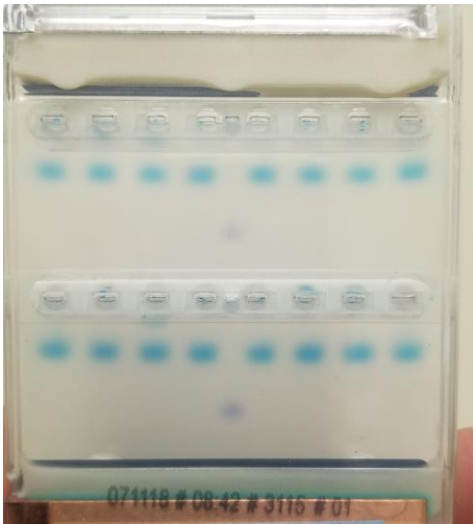
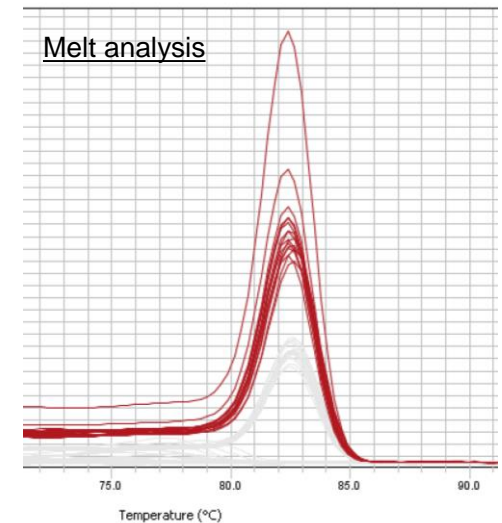
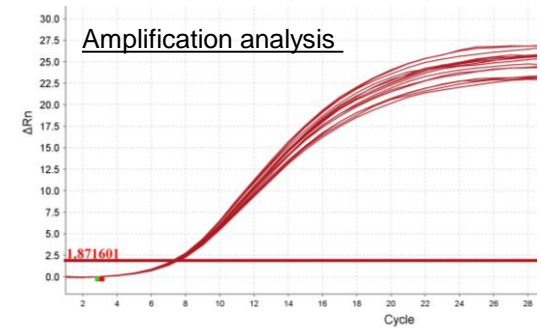


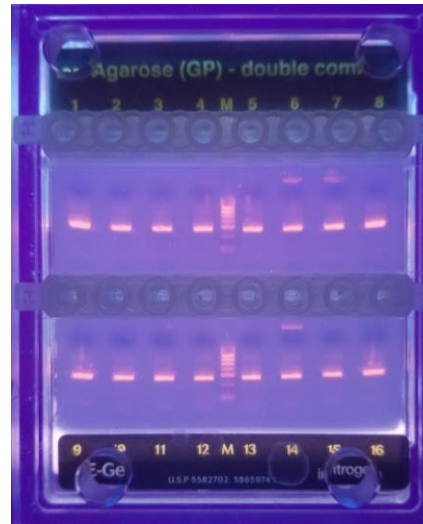
Use of GLM technology to Confirm qPCR Results by Gel Electrophoresis

- Eliminate the need to open the PCR tubes and pipette the samples.
- Avoid the risk of laboratory contamination by PCR products.
 - qPCR performed using ThermoFisher PowerUP master mix (SYBR)
 - Reactions performed in standard PCR 8-tube strips and caps
 - Visible dye included in qPCR reaction to allow visual confirmation of successful gel loading
 - qPCR and analysis performed using ABI QS3 and QuantStudio software
 - Gel loading performed using Kimantech's GLM technology
 - Electrophoresis done using ThermoFisher E-gel

qPCR Results of the Same 16 Samples Loaded on Gel



Underside of gel using visible light conditions



Top side of gel using UV light