

DEKPRO PRESTIGE COLUMN WRAP INSTALLATION INSTRUCTIONS

INSTRUCTIONS

- Please read all instruction completely before starting any installation.
- **SAFETY:** Always be safe and follow all instructions when using power tools and always wear eye protection!
- Any questions? Call 800-335-5909 or visit or website: www.DekProMfg.com
- **IMPORTANT:** Consult your local building code official and check all Code Requirements

RECOMMENDED TOOLS & SUPPLIES

- Pry Bar
- 1/8" width Flat-head Screwdriver or Mini Pry Bar
- Shims or 5/8" treated wood for "packing" out the wraps**
- Rubber Mallet
- Tape Measure
- Speed Square
- Cordless Drill / Impact Driver
- Miter Box with Fine Tooth Carbide Blade
- Level
- Pencil



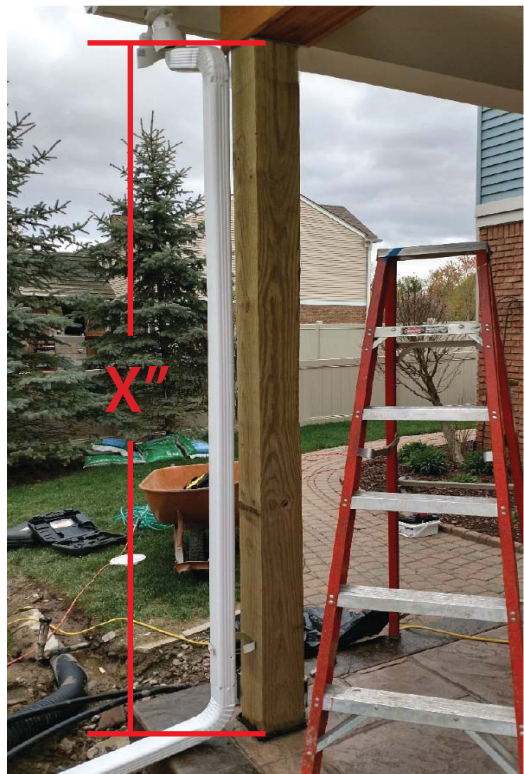
Column Wrap

INSTALLATION

STEP 1

CUT TO SIZE

Measure posts ("X" Length) and cut Column Wrap pieces (4 ea) to size.
Double check measurement before cutting.
Use fine tooth carbide blade to cut aluminum wrap.



STEP 2

PACK OUT SUPPORT POSTS AND FLASH

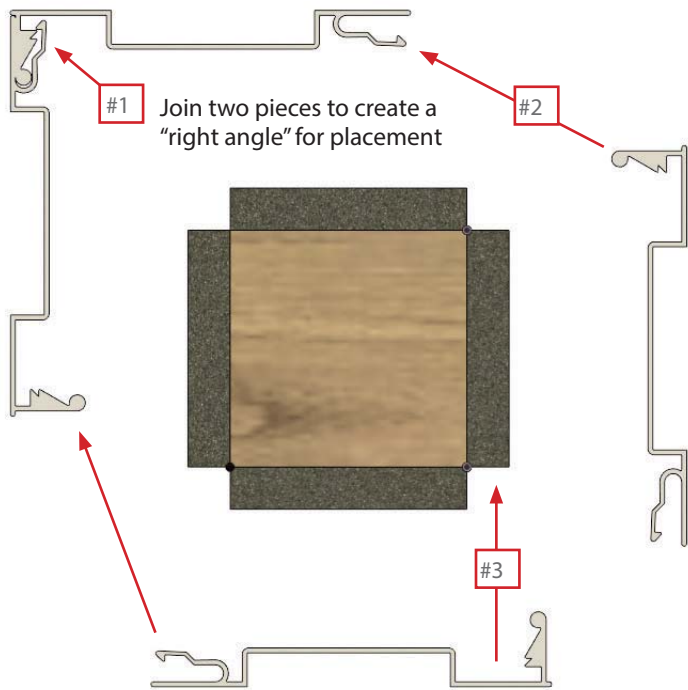
Use 5/8" treated wood to "pack out" the 4 X 4 or 6 X 6 treated "nominal" support the load bearing deck or roof (see engineering specs for correct sized lumber for load bearing). Use protective rubber flashing material to minimize contact of aluminum to treated lumber material.



STEP 3

SNAPPING THE 4 PIECE COLUMN WRAPS

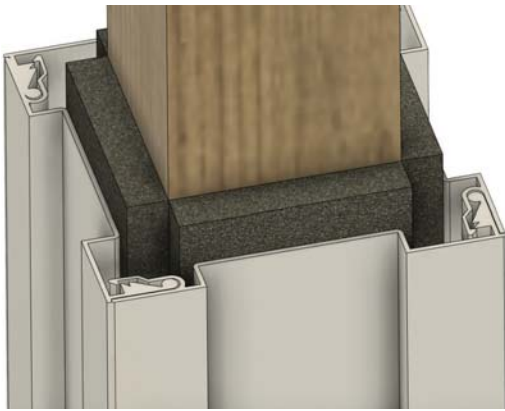
Check to ensure the column wrap will fit correctly. Start with a single piece and begin to fit and snap together the 4 pieces around the support column.



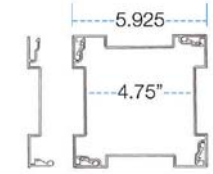
STEP 4

FINAL ASSEMBLY

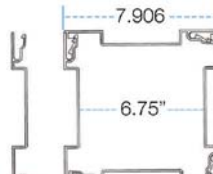
Final assembly should look like these pictures. Only use the column wrap with load bearing posts for proper installation.



Column Wraps cannot be used alone to support any load-bearing structure



6" Column Wrap



8" Column Wrap

STEP 5

OPTIONAL COLUMN LOCKS INSTALLATION

Use a rubber mallet and carefully "tap" the column lock pieces (grooved edge down and hidden by bases) for a raised column look. These are placed in by friction. You can use a small set #8 screw for a more secure attachment.



#8 screw



8 piece Column locks friction fit into channels

STEP 6

1 PIECE BASE PROTOTYPE / OPTIONAL 2 PIECE BASE

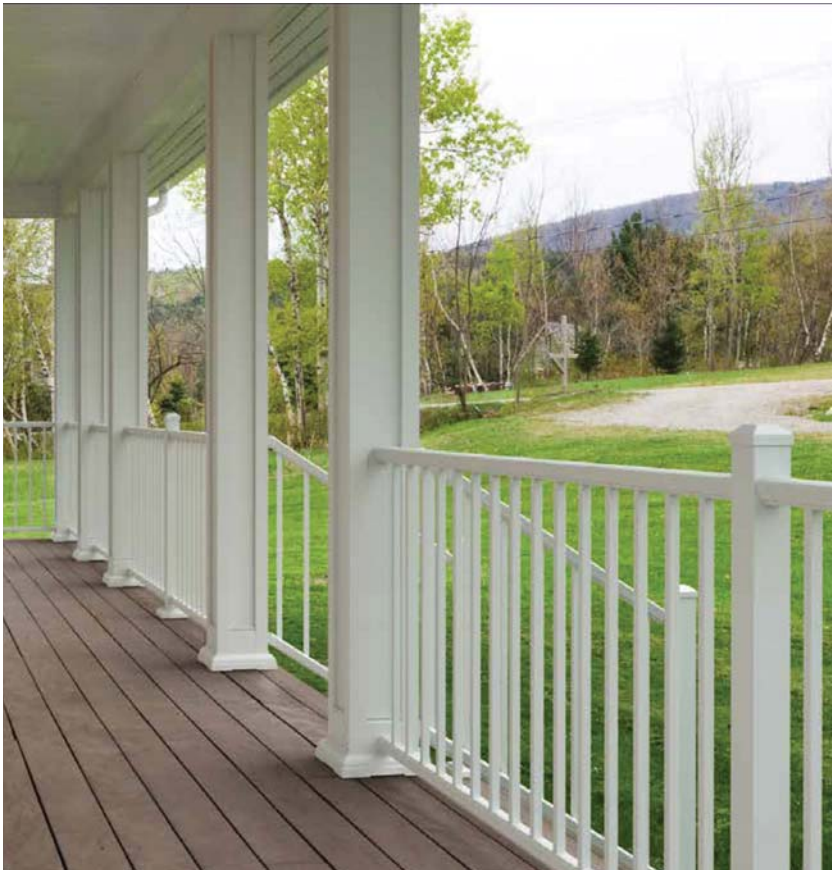


1 piece Base prototype



2 piece Base prototype

FINAL INSTALLATION



Marketed and Distributed by:



Absolute Distribution Inc.
1-800-335-5909