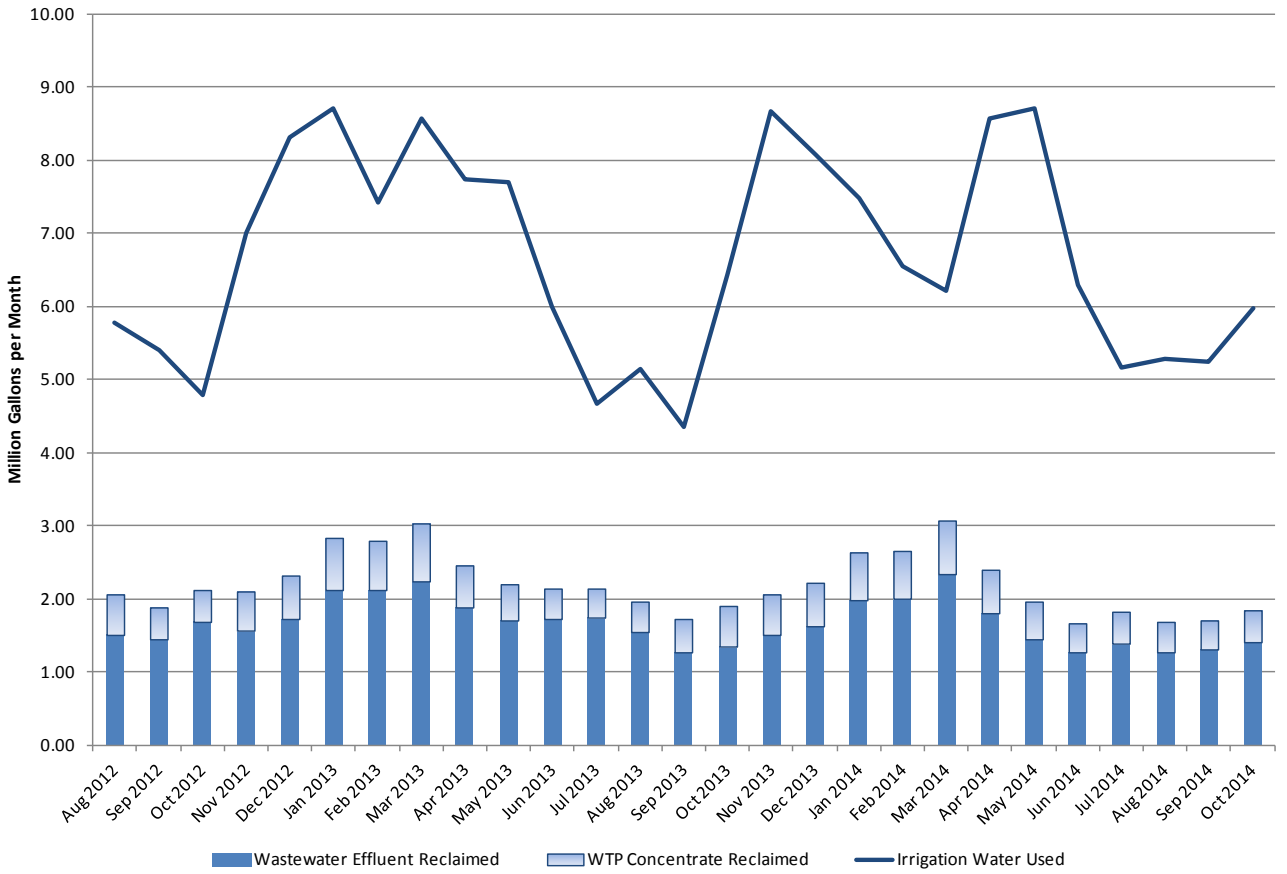
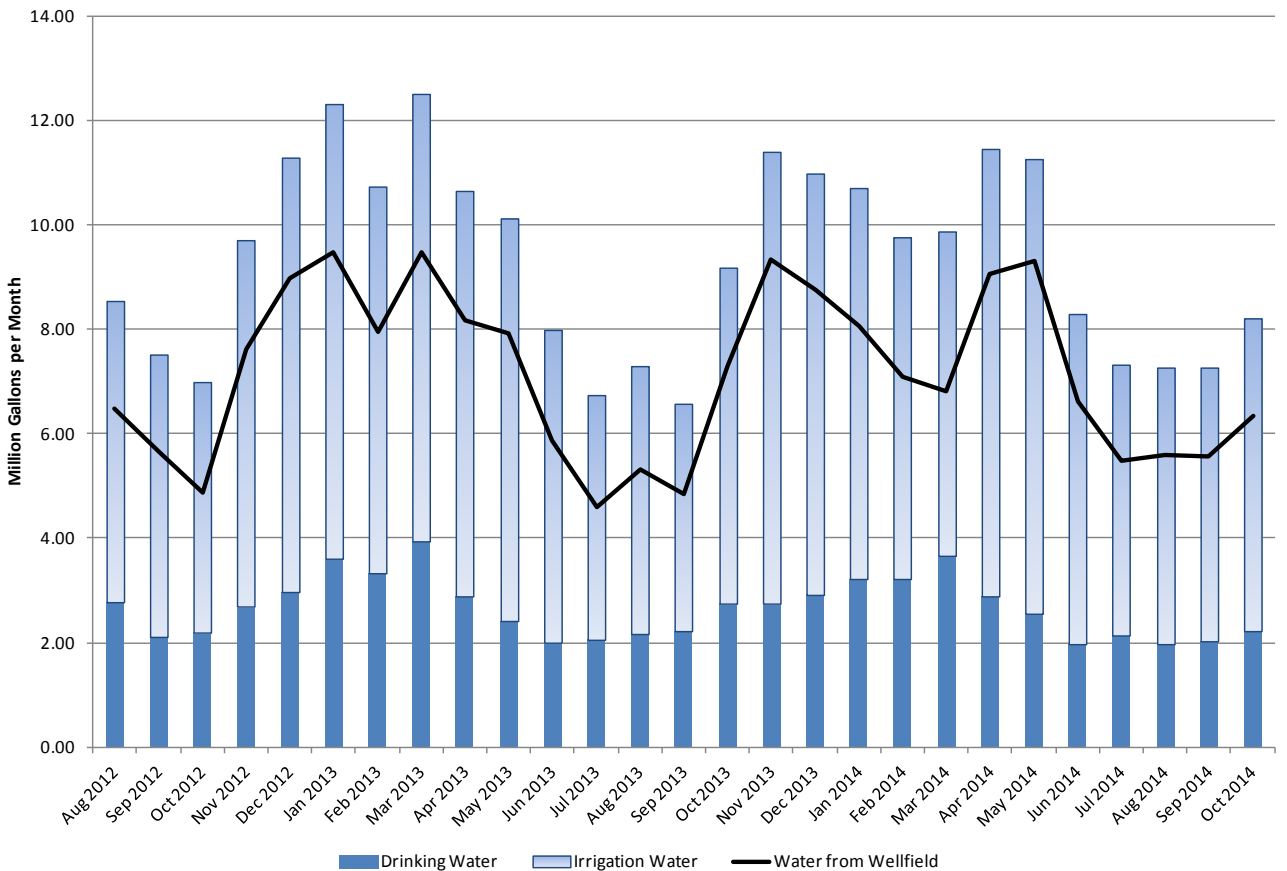


Port of the Islands - Reuse of Reclaimed Water



Port of the Islands - Water Savings due to Reuse of Reclaimed Water



Port of the Islands Community Improvement District - Water Resource Summary

	Oct 2013	Nov 2013	Dec 2013	Jan 2014	Feb 2014	Mar 2014	Apr 2014	May 2014	Jun 2014	Jul 2014	Aug 2014	Sep 2014	Oct 2014	12-mo. Total
Potable Water Produced	2.21	2.19	2.32	2.57	2.57	2.94	2.32	2.04	1.59	1.72	1.59	1.63	1.78	25.26
Wastewater Treated	1.35	1.52	1.64	1.99	2.01	2.34	1.81	1.45	1.27	1.40	1.28	1.31	1.41	19.42
WW as percent of Potable	61.0%	69.2%	70.4%	77.5%	78.2%	79.6%	78.1%	70.7%	79.9%	81.2%	80.8%	80.3%	79.1%	76.9%
Irrigation Water	6.42	8.66	8.07	7.48	6.54	6.20	8.56	8.71	6.30	5.17	5.29	5.25	5.98	82.20
Reclaimed WW	(1.35)	(1.52)	(1.64)	(1.99)	(2.01)	(2.34)	(1.81)	(1.45)	(1.27)	(1.40)	(1.28)	(1.31)	(1.41)	(19.42)
Reclaimed Concentrate	(0.55)	(0.55)	(0.58)	(0.64)	(0.64)	(0.73)	(0.58)	(0.51)	(0.40)	(0.43)	(0.40)	(0.41)	(0.44)	(6.32)
Water from wells for Irrigation	4.53	6.60	5.85	4.84	3.89	3.13	6.17	6.75	4.63	3.34	3.61	3.53	4.13	56.47
Well water as % of Irrigation water	70.5%	76.2%	72.5%	64.7%	59.5%	50.4%	72.1%	77.5%	73.5%	64.6%	68.3%	67.3%	69.1%	68.7%
Well water for Potable	2.76	2.74	2.91	3.22	3.21	3.67	2.90	2.56	1.99	2.15	1.98	2.03	2.22	31.58
Well water for Irrigation	4.53	6.60	5.85	4.84	3.89	3.13	6.17	6.75	4.63	3.34	3.61	3.53	4.13	56.47
Total water from wells	7.28	9.34	8.75	8.06	7.10	6.80	9.07	9.31	6.62	5.49	5.60	5.57	6.35	88.04
Water from wells w/o Reuse	9.18	11.40	10.97	10.69	9.75	9.88	11.46	11.26	8.29	7.32	7.27	7.28	8.20	113.78
Well water saved	1.90	2.07	2.22	2.64	2.65	3.07	2.39	1.96	1.67	1.83	1.68	1.71	1.85	25.73

all numbers in million gallons, except percentage values

