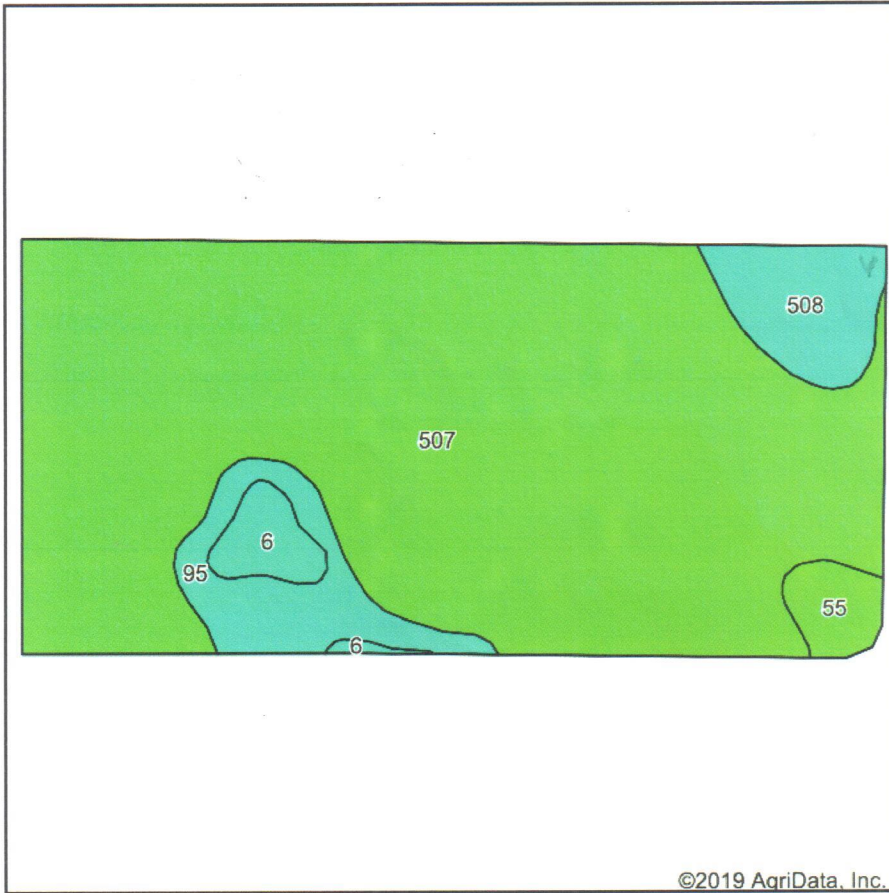
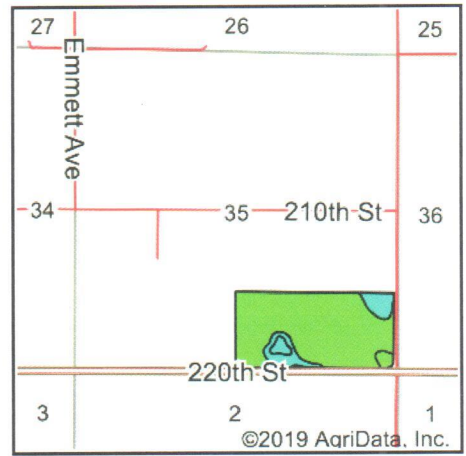


Soils Map



©2019 AgriData, Inc.

Soils data provided by USDA and NRCS.



©2019 AgriData, Inc.

State: **Iowa**
 County: **Wright**
 Location: **35-92N-26W**
 Township: **Liberty**
 Acres: **73.91**
 Date: **6/7/2019**



Area Symbol: IA197. Soil Area Version: 25													
Code	Soil Description	Acres	Percent of field	CSR2 Legend	Water Table	Restrictive Layer	Septic Limits	Foundation Limits	Non-Irr Class *c	CSR2**	CSR	*n NCCPI Soybeans	
507	Canisteo clay loam, 0 to 2 percent slopes	61.76	83.6%		2ft.	> 6.5ft.	very limited	very limited	IIw	84	78	79	
95	Harps clay loam, 0 to 2 percent slopes	4.74	6.4%		0ft.	> 6.5ft.	very limited	very limited	IIw	72	62	77	
508	Calcousta silty clay loam, 0 to 1 percent slopes	3.99	5.4%		0ft.	> 6.5ft.	very limited	very limited	IIIw	74	70	91	
6	Okoboiji silty clay loam, 0 to 1 percent slopes	1.79	2.4%		1.3ft.	> 6.5ft.	very limited	very limited	IIIw	59	57	77	
55	Nicollet clay loam, 1 to 3 percent slopes	1.63	2.2%		1.5ft.	> 6.5ft.	very limited	very limited	Iw	89	88	78	
Weighted Average										82.2	76.3	*n 79.4	

**IA has updated the CSR values for each county to CSR2.
 *n: The aggregation method is "Weighted Average using major components"
 *c: Using Capabilities Class Dominant Condition Aggregation Method
 Soils data provided by USDA and NRCS.