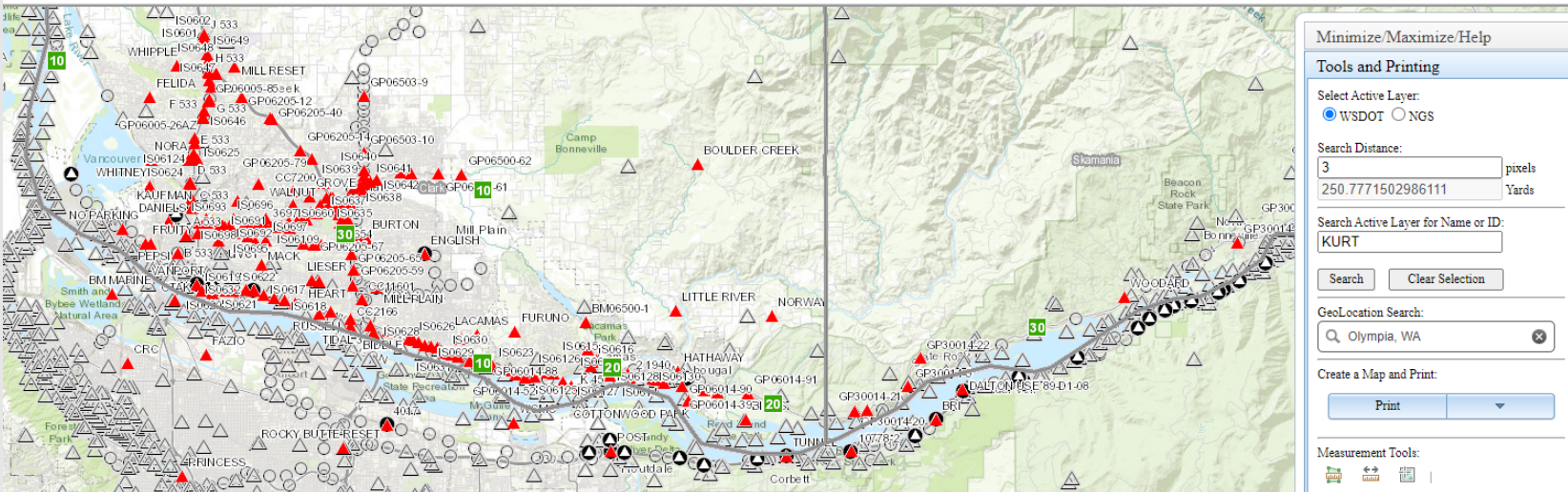


Online Geodetic Control Database



Travel | Construction & Planning | Business with WSDOT | Engineering & Standards | About

Home > Engineering & Standards > Design topics > Surveying & roadway construction > Survey Monument Database Map Engine



Minimize/Maximize/Help

Tools and Printing

Select Active Layer:
 WSDOT NGS

Search Distance:
3 pixels
250.7771502986111 Yards

Search Active Layer for Name or ID:
KURT

GeoLocation Search:

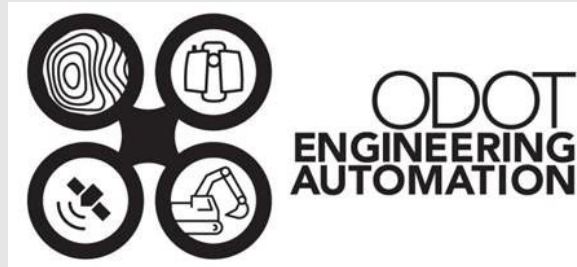
Create a Map and Print:

Measurement Tools:

Chris Pucci, PLS
ODOT Engineering
Automation Section
OGUG Meeting – PLSO
Conference
January 21, 2022

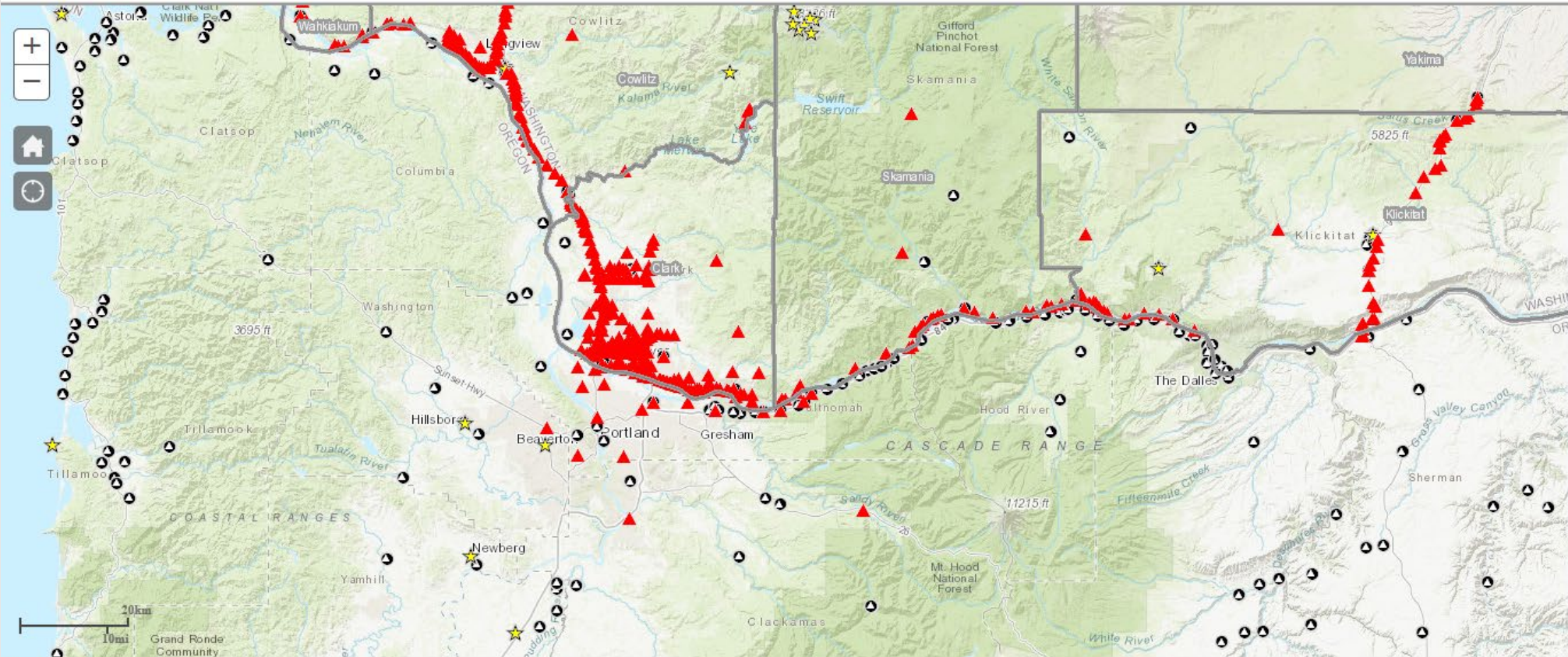
Chris Pucci, PLS

- Professional Land Surveyor
- ODOT Statewide Survey/New Technology Group
- Community College Land Surveying Instructor
- Focus on Technology & Training: GNSS Tablets, Ground Penetrating Radar, Machine Control, GNSS Research, anything new...



ODOT Project with Statewide Implication

- Project is just kicking off
- Goal is to create a database driven / GIS accessible geodetic control and monument database
- Start with ODOT project data
- Add in other state and local agencies
- Move to professional surveyors / other geospatial experts



Minimize/Maximize/Help

Tools and Printing

Select Active Layer:
 WSDOT NGS

Search Distance:
3 pixels
1003.1086011953125 Yards

Search Active Layer for Name or ID:
KURT
[Search] [Clear Selection]

GeoLocation Search:
Olympia, WA

Create a Map and Print:
[Print]

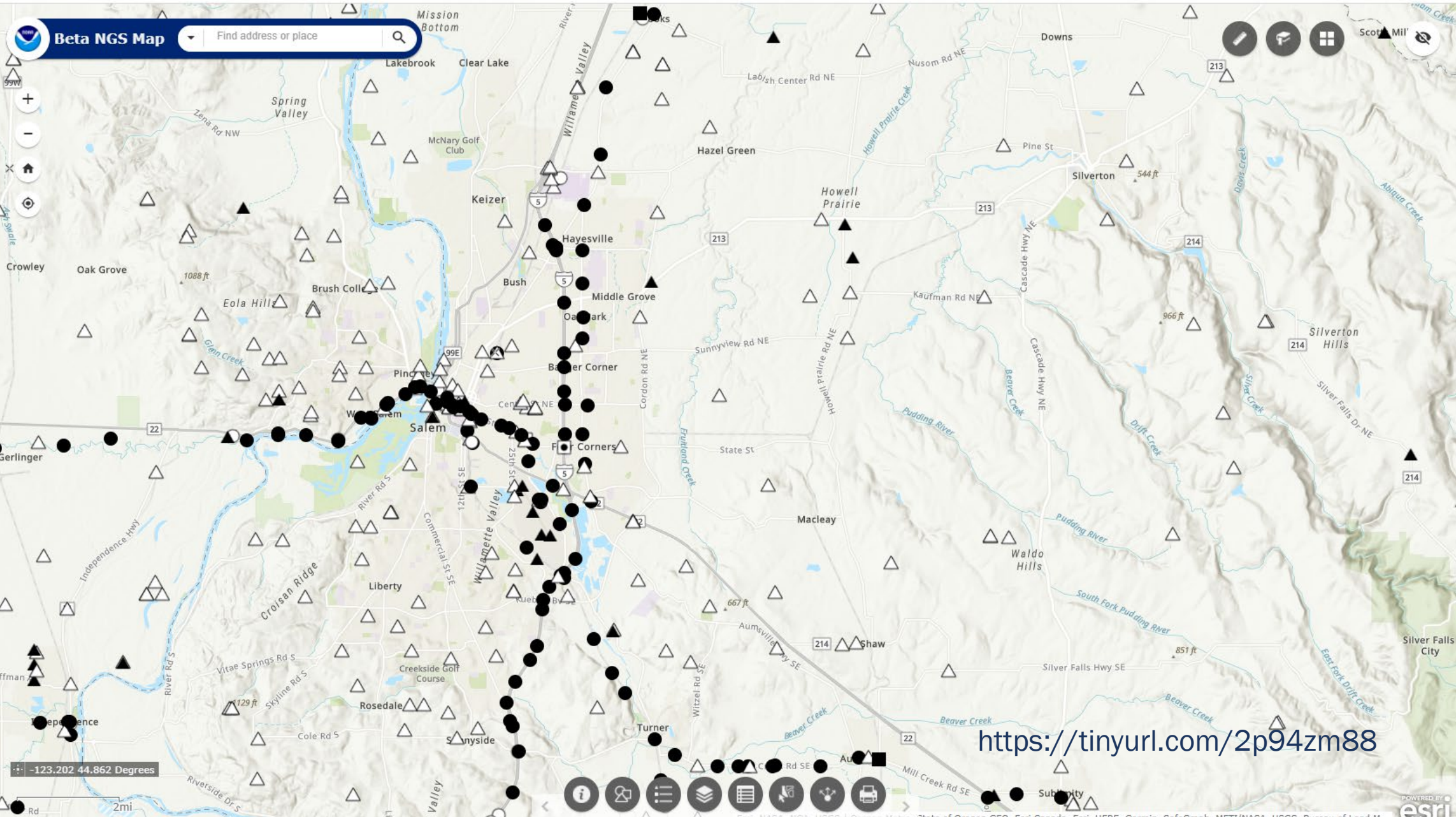
Measurement Tools:
[Icons]

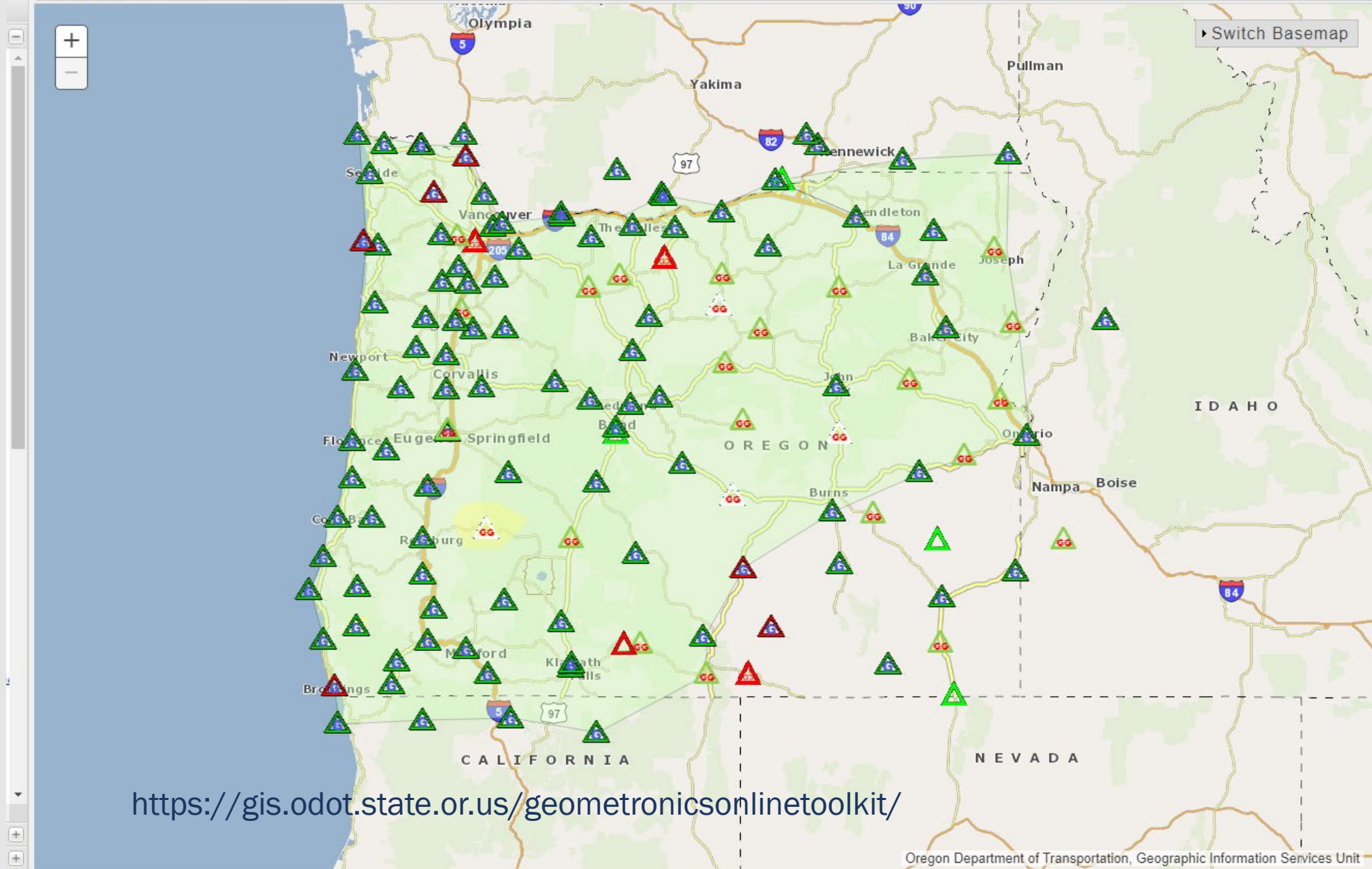
Measurement Result

Basemaps

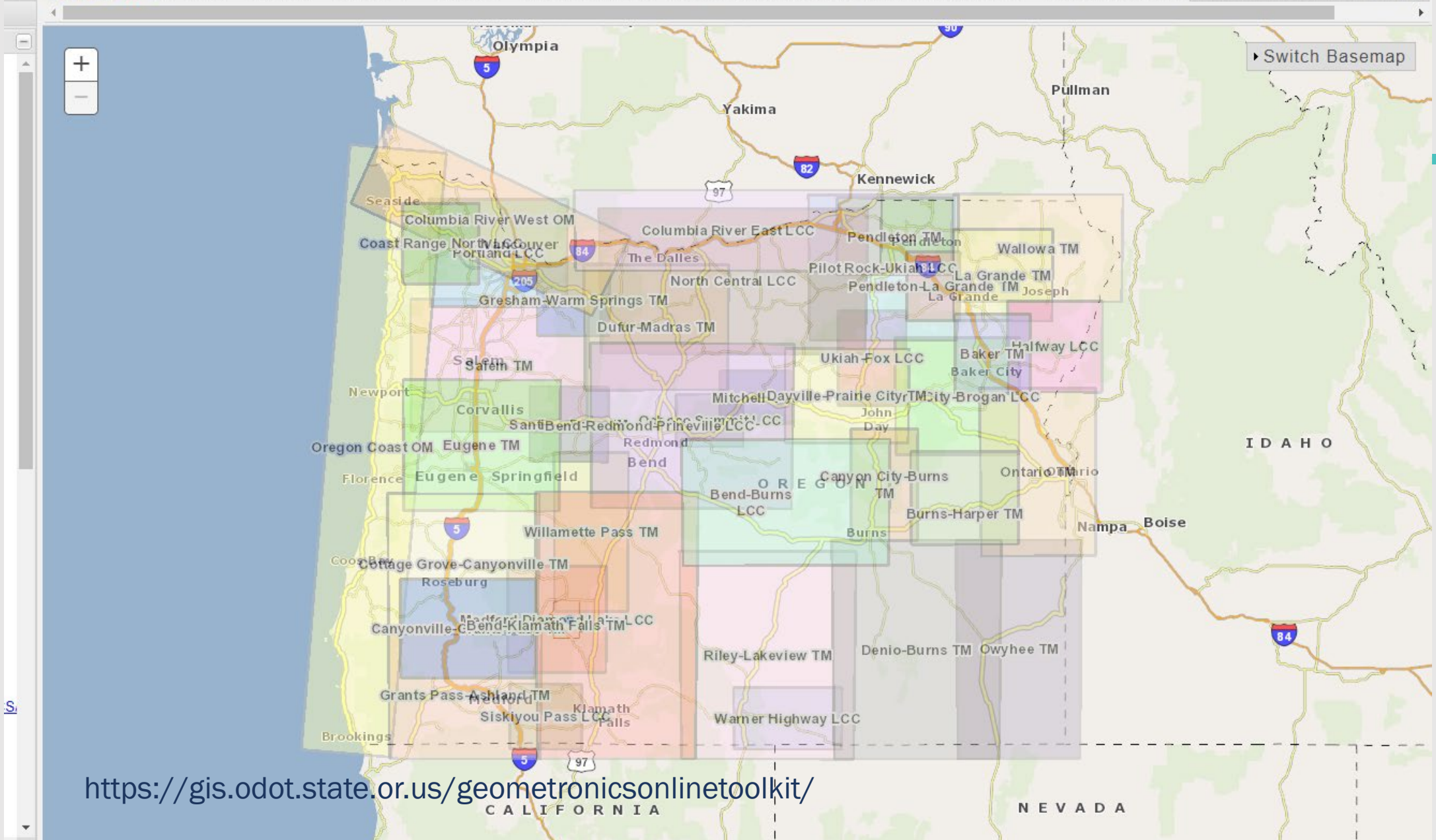
Layers

DISCLAIMER: This map is for display purposes only and is not intended for any legal representation.





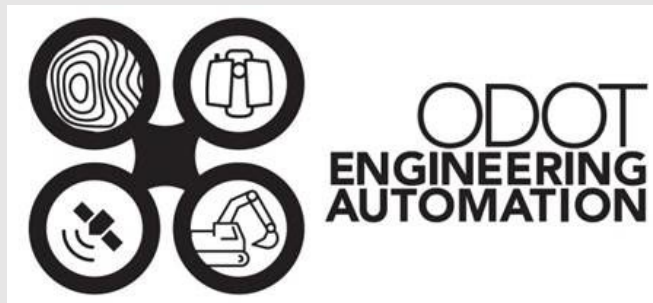
<https://gis.odot.state.or.us/geometronicsonlinetoolkit/>



<https://gis.odot.state.or.us/geometronicsonlinetoolkit/>

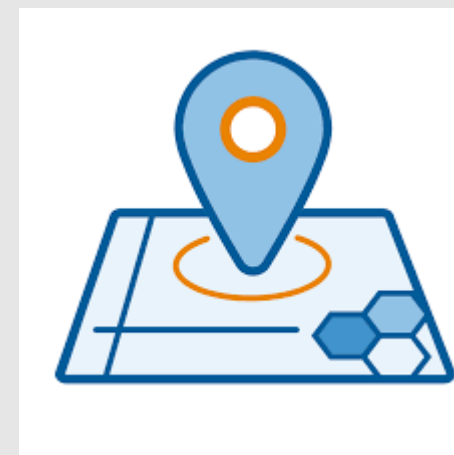
How are we going to do it?

- Oregon State University as a contractor
- ODOT Research as contract administrator/project manager
- ODOT Engineering Automation as project Champion
- Chris Pucci as Project 'Driver' / The guy that wants it done!



Bigger Picture Statewide Role

- Geographic Information Council priority
 - State Geographic Information office priority
 - Potential new Geodetic Control Data Standard
 - One-Stop shop for geodetic control
-
- ODOT project will be the ‘start’ of something bigger



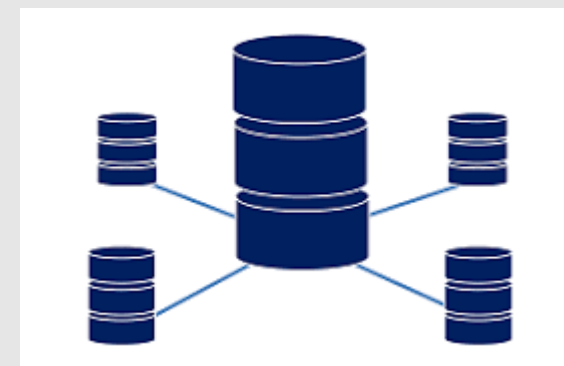
Wish List Items

- Statewide data (Lots of participants!)
- Housed in state managed database
- Live links to ‘other’ data sources – not copies
- Easy upload of data (with QA/QC function)
- Viewable in ArcGIS Online or similar non-custom application
- Easy download of data (Excel, ‘datasheets’, maps)
- Easy to search and filter



METADATA!!

- Not just points and coordinates
- As much metadata as we can get for each point
- Descriptions that go beyond 'GPS Point'
- Datums, epochs, original collection date, etc.
- Agency, project, survey number, web link to more info
- Pictures?



What am I missing?



“Great discoveries and improvements invariably involve the cooperation of many minds.”

Alexander Graham Bell

Next steps

- Internal ODOT meetings to outline database structure GIS/IT/IS roles
- OSU/ODOT GIS Database building (copy WASHDOT schema?)
- OSU to build frontend
- OSU to build data upload 'tool'
- OSU to test it all!
- Start populating with ODOT data...



Timeline

- Honestly – no idea – these are wild guesses
- 9 to 12 months for first online tools
- 2 years to a complete working ‘system’?



Open discussion

- I am taking notes
- I want your ideas and comments

- You can also email or call me later with ideas, thoughts, comments, suggestions, words of encouragement, etc.

Questions?

Chris Pucci, PLS

Project Surveyor

Engineering Automation Section

Christopher.Pucci@odot.oregon.gov

Phone:503-302-5474