



Protecting Water, Forests and Wildlife

Battle Creek Alliance Defiance Canyon Raptor Rescue

Rock Creek Rd.
Manton, CA 96059
(530) 474-5803

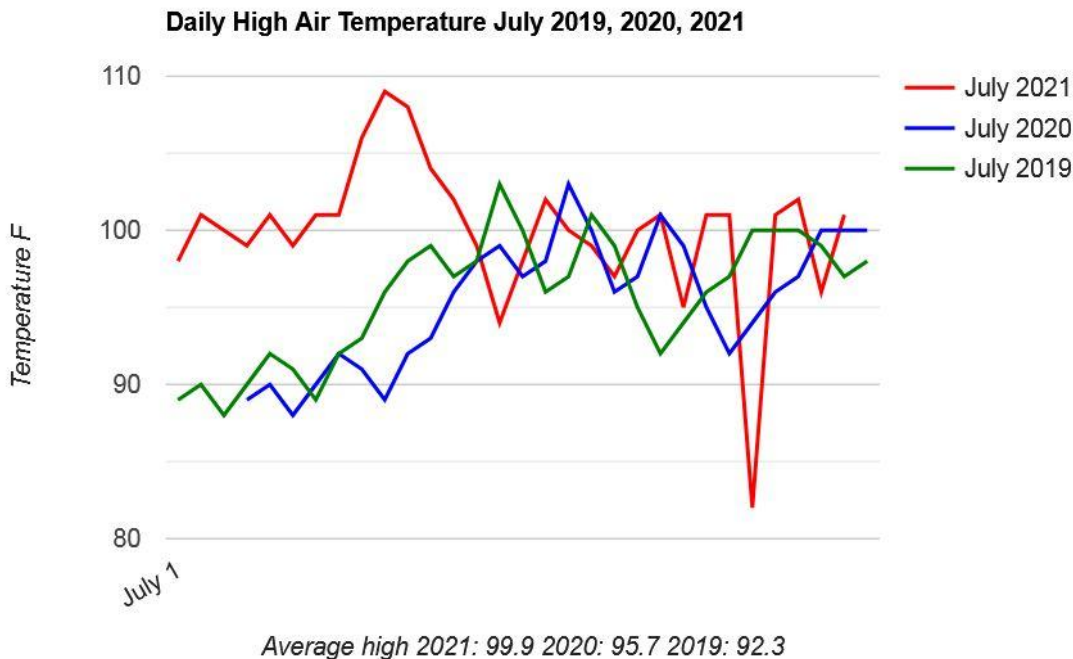
www.thebattlecreekalliance.org



Water and air temperatures recorded by Battle Creek Alliance in the Battle Creek watershed 2019, 2020, 2021

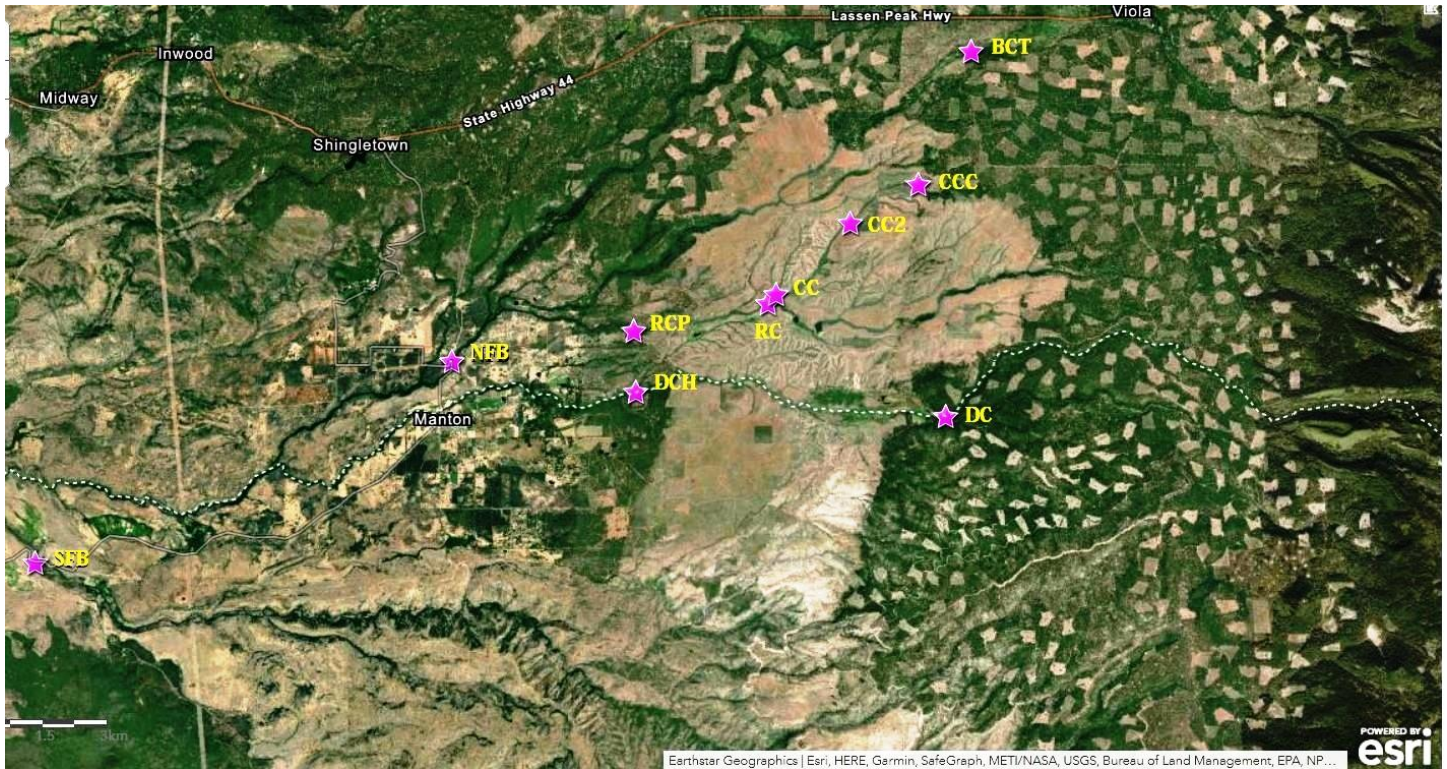
We began recording the high and low air temperatures in Manton at 2200' elevation in 2019. This is to the west of the border of the industrial timberland and near our north fork Battle Creek water sampling site (NFB). The readings are taken by a digital thermometer installed in the shade on the northeast side of a building. The thermometer is calibrated to a NIST thermometer weekly.

The following graph summarizes the daily high air temperatures in July 2019, 2020, and 2021.



Between 2019 and 2021 the average high temperature increased by 7.6 degrees.

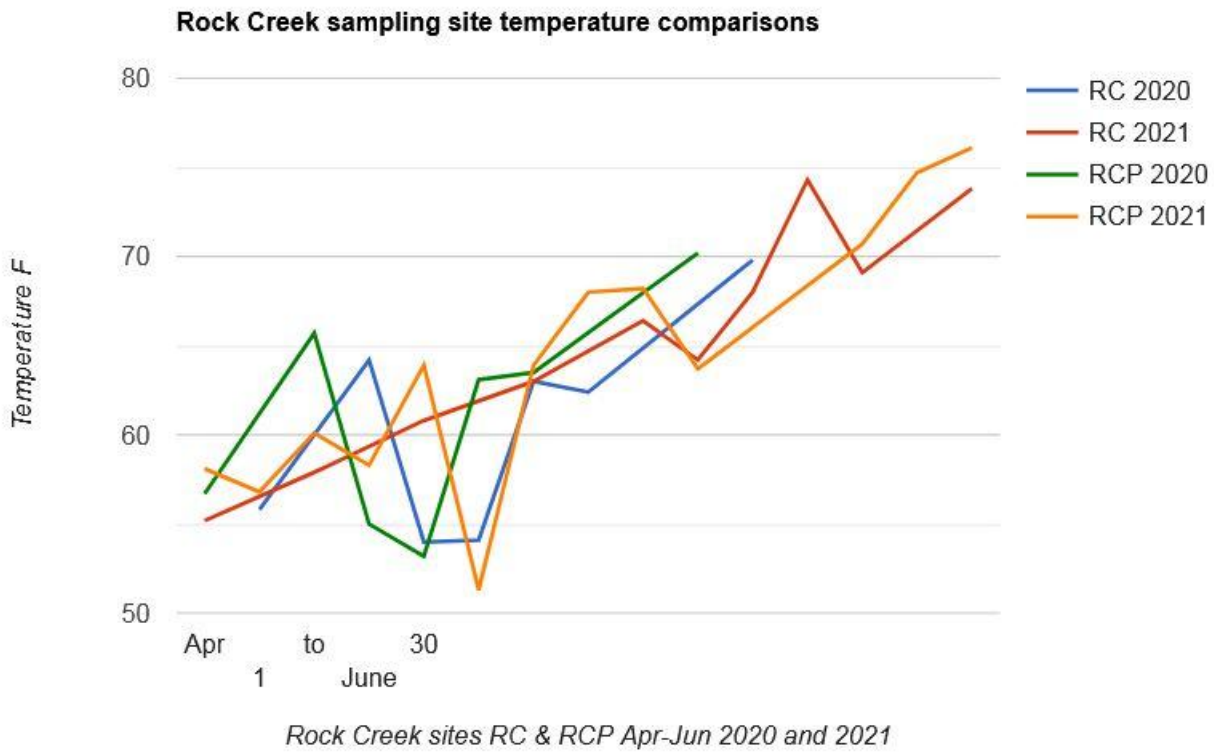
The following map marks our water monitoring sites. The white dotted line is Digger Creek which is the border between Shasta and Tehama counties. The large brown area east of RCP and DCH is industrial timberland which had been clearcut between 1998 and 2012 and then burned in 2012 and was salvage logged. The smaller brown areas on the eastern side of the image are clearcuts.



The next graph illustrates the water temperature changes at our water monitoring sites Rock Creek (RC) and Rock Creek Ponderosa (RCP) recorded between April 1st and June 30th in 2020 and 2021.

RC is higher upstream at 3090' elevation, RCP is downstream at 2590' elevation. The details of the equipment used, methodology, and the sites are in our Quality Assurance Project Plan (QAPP) document.

o



The next graph is of our Digger Creek sites, DC and DCH.

DC is the higher upstream site at 3440' elevation; DCH is downstream at 2580' elevation.

