



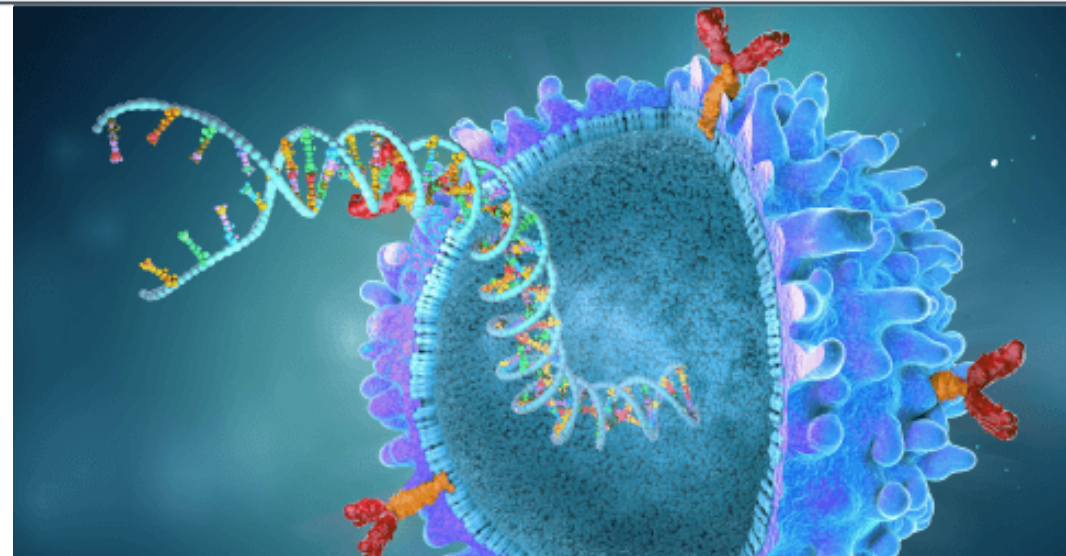
powered by CEA

Provided by Clinical Care Options, LLC

Caring for Patients Receiving CAR T-Cell Therapy: Expert Guidance for Community Practice

Saturday, September 10, 2022 | 1:00 PM PT
GLAONS 6th Annual Oncology Care Summit
Los Angeles, CA

Supported by educational grants from Bristol-Myers Squibb;
Kite, a Gilead Company; and Novartis Pharmaceuticals Corporation.



Program Chairs

Jesús G. Berdeja, MD

*Director of Multiple Myeloma
Research*

Sarah Cannon Research Institute
Sarah Cannon Center for Blood
Cancer
Tennessee Oncology
Nashville, Tennessee

Caron A. Jacobson, MD

Assistant Professor

Division of Medical Oncology
Department of Medicine
Harvard Medical School
Dana-Farber Cancer Institute
Boston, Massachusetts

Faculty

Loretta Nastoupil, MD

Associate Professor

Department of Lymphoma/Myeloma

University of Texas MD Anderson

Cancer Center

Houston, Texas

Joshua Sasine, MD, PhD

Assistant Professor of Medicine

Co-Director, CAR T Program

Division of Hematology and Cellular

Therapy

Cedars-Sinai Medical Center

Los Angeles, California

Disclosure of Conflicts of Interest

Clinical Care Options, LLC (CCO) requires instructors, planners, managers, and other individuals who are in a position to control the content of this activity to disclose all financial conflicts of interest (COI) they may have with ineligible companies. All relevant COI are thoroughly vetted and mitigated according to CCO policy. CCO is committed to providing its learners with high-quality CME/CE activities and related materials that promote improvements or quality in healthcare and not a specific proprietary business interest of an ineligible company.

Faculty Disclosures

The **faculty** reported the following relevant financial relationships or relationships to products or devices they have with ineligible companies related to the content of this educational activity.

Caron A. Jacobson, MD: *consultant:* Bluebird, Bristol-Myers Squibb/Celgene, Epizyme, Instill, Ipsen, Kite/Gilead, Lonza, Novartis.

Jesús G. Berdeja, MD: *researcher:* AbbVie, Acetylon, Amgen, Astex Pharmaceuticals, Bluebird bio, BMS, CARsgen Therapeutics, Cartesian Therapeutics, Celator Pharmaceuticals, Celgene, Celularity, CRISPR Therapeutics, CURIS, C4 Therapeutics, EMD Sorono, Fate Therapeutics, Genentech, GSK, Ichnos Sciences, Incyte, Janssen, Juno, Karyopharm, Kesios, Lilly, Millennium Pharmaceuticals, Novartis, Onyx Pharmaceuticals, Pharmacyclics, Poseida, Sanofi, Takeda, Vivolux.

Loretta Nastoupil, MD: *consultant/advisor/speaker:* ADC Therapeutics; *researcher:* Bristol Myers Squibb, Caribou Biosciences, Epizyme, Genentech, Gilead/Kite, Janssen, Novartis, Takeda.

Joshua Sasine, MD, PhD: no relevant financial relationships to disclose.

Staff Disclosures

The *planners/managers* reported the following relationships.

Ryan P. Topping, PhD; Timothy A. Quill, PhD; Jim Mortimer; Krista Marcello; June Wasserstrom; Jacqueline L. Olin, MS, PharmD, BCPS, FASHP, FCCP; and Kevin Obholz, PhD, have no relevant financial relationships to disclose.

Kristi Kay Orbaugh, RN, MSN, RNP, AOCN: *speaker:* AstraZeneca, BMS, DSI, Gilead, Lilly, Morphosys, Pfizer, Regeneron.

Disclosure of Unlabeled Use

This educational activity may contain discussion of published and/or investigational uses of agents that are not indicated by the FDA. The planners of this activity do not recommend the use of any agent outside of the labeled indications.

The opinions expressed in the educational activity are those of the faculty and do not necessarily represent the views of the planners. Please refer to the official prescribing information for each product for discussion of approved indications, contraindications, and warnings.

Disclaimer

Learners have an implied responsibility to use the newly acquired information to enhance patient outcomes and their own professional development. The information presented in this activity is not meant to serve as a guideline for patient management. Any procedures, medications, or other courses of diagnosis or treatment discussed or suggested in this activity should not be used by learners without evaluation of their patient's conditions and possible contraindications and/or dangers in use, review of any applicable manufacturer's product information, and comparison with recommendations of other authorities.

Goal

The goal of this activity is to improve the knowledge, competence, and performance of healthcare professionals practicing in community settings managing patients eligible for or who have received CAR T-cell therapy.

Target Audience

This program is intended for hematologists, nurses, pharmacists, and other healthcare professionals who treat and manage patients with hematologic malignancies who may benefit from or who have received CAR T-cell therapy.

Learning Objectives

At the conclusion of this activity, learners should be able to:

- Recall the scientific principles underlying the use of CAR T-cells
- Identify patients who are likely to benefit from CAR T-cell therapy and refer to the appropriate authorized center for treatment or clinical trial enrollment
- Determine best practices for timely referral of appropriate patients for CAR T-cell therapy and develop proper channels of communication between community and academic centers to streamline the logistics of delivering therapy
- Apply multidisciplinary interventions to monitor, identify, and manage acute toxicities and ensure patient safety while receiving CAR T-cell therapy
- Integrate recent developments, clinical trial findings, and indications of recently approved and emerging CAR T-cell therapies into clinical practice to enhance clinical outcomes

Accreditation Information



In support of improving patient care, Clinical Care Options, LLC (CCO) is jointly accredited by the Accreditation Council for Continuing Medical Education (ACCME), the Accreditation Council for Pharmacy Education (ACPE), and the American Nurses Credentialing Center (ANCC) to provide continuing education for the healthcare team.

Designation of Credit

Physician Continuing Medical Education

CCO designates this live activity for a maximum of 1.0 *AMA PRA Category 1 Credit™*.

Physicians should claim only the credit commensurate with the extent of their participation in the activity.

Continuing Pharmacy Education

CCO designates this continuing education activity for 1.0 contact hour (0.1 CEUs) of the Accreditation Council for Pharmacy Education. Universal Activity Number - JA4008176-0000-22-126-L01-P

Type of Activity: Application

Upon successfully completing the activity evaluation form, transcript information will be sent to the NABP CPE Monitor Service within 60 days.

Nursing Continuing Education

The maximum number of hours awarded for this activity is 1.0 contact hour.

ARS Interactive Questions: How to Vote

- You will find a small card-style remote at your seat
- The buttons are numbered 1-9 and 0
- When the presenter asks you to vote on a question, please press the button that corresponds with your answer
- If you change your mind or press an incorrect key, just press the correct button; the last button pressed will be accepted as your answer
- At the end of the session, please leave the remote at the seat where you found it



Slide 12

RT119 CMM: Please select appropriate polling instruction slide and unhide for each program
Ryan Topping, 3/12/2022

Go Online for More CCO Coverage of CAR T-Cell Therapy!

Downloadable slideset with slides from today's presentation (*available now*)

CME/CE/CPE-certified on-demand webcast of a live webinar (*coming soon*)

CAR T-cell toxicity management Interactive Decision Support Tool:

Enter your own case scenarios to get management recommendations from
5 multidisciplinary experts (*available now*)

clinicaloptions.com/oncology

clinicaloptions.com/CARTtool

