

architecture interiors objects graphics  
d o f [x]

# d o f [x] architecture +

"THE *DERIVATIVE* OF A FUNCTION AT A CHOSEN INPUT VALUE DESCRIBES THE *RATE OF CHANGE* OF THE FUNCTION NEAR THAT INPUT VALUE. THE PROCESS OF FINDING A DERIVATIVE IS CALLED DIFFERENTIATION" – DIFFERENTIAL CALCULUS.

THE ACT OF DESIGNING – IN A CERTAIN SENSE, IS A (SUB) CONSCIOUS ENDEAVOUR TO NEGOTIATE 'CHANGE' – TO EVOLVE AND ADAPT, LEADING ONE TO 'CREATE' SOMETHING. AND IN THE ACT OF CREATION, WHAT ONE SETS INTO MOTION IS QUITE INTRIGUING, ONCE THE TIME PARAMETER IS LINKED.

d [x] DEALS NOT WITH CHANGE AS AN ISOLATED NOTION BUT WITH THE 'RATE OF CHANGE' OF A SYSTEM WITH RESPECT TO SPECIFIC ENTITIES.

CONSTANT CHANGE VS RATE OF CHANGE [OR]

HOW THE CHANGE

WHAT'S THE CHANGE

HOW FAST OR SLOW IS THE CHANGE

WITH REFERENCE TO WHAT IS THE CHANGE.

WHEN WE APPROACH ARCHITECTURE AS AN ENDEAVOUR TO ADAPT, EVOLVE AND ELEVATE WITH THE CHANGING ENVIRONMENT, WE BELIEVE THAT THE RESULTING ENTITY, WOULD NOT ONLY BE CONTEXTUALLY RELEVANT AND APPROPRIATE (AKA FUNCTIONAL) BUT ALSO SOMETHING THAT HAS A PROFOUND AND DEEP MEANING. THE OUTCOME IS, AGAIN, NOT THE MEANS TO AN END BUT THE BEGINNING OF THE LIFE OF A NEW ENTITY. AT DOF[X] WE BELIEVE IN QUESTIONING THE THE WAY ARCHITECTS APPROACH A DESIGN ISSUE. 'ARE WE APPLYING OLD SOLUTIONS TO NEW PROBLEMS?', IN A RAPIDLY CHANGING ATMOSPHERE? WE, WILL ASK THE RELEVANT AND MOST PERTINENT QUESTIONS, APPLY THE 'TOOL' OF 'CRITICAL' AND 'LATERAL THINKING', TO PULL SOLUTIONS 'OUT OF THE BOX'.

d [x]

# d o f [x] - who ?

*C.S.SUNDAR VELAN – FOUNDER/PRINCIPAL ARCHITECT  
M.ARCH (POST PROFESSIONAL), UNIVERSITY OF PENNSYLVANIA.*

SUNDAR VELAN HAS DIVERSE EXPERIENCE OF OVER TEN YEARS, WITH PREMIER ARCHITECTURAL PRACTICES IN THE COUNTRY SPANNING VARIOUS BUILDING/PROJECT TYPOLOGIES AND HOLDS A MASTER'S DEGREE FROM THE UNIVERSITY OF PENNSYLVANIA. HE STARTED HIS CAREER IN 2004, WITH SPAC-ESCAPE ARCHITECTS IN CHENNAI. CNT BANGALORE, PSP CHENNAI, MORPHOGENESIS DELHI, SVA CHENNAI, ARE THE FIRMS HE HAD WORKED FOR UNTIL HE STARTED DOF[X] IN AUGUST 2015.

THE CHOICE OF THE MASTER'S PROGRAM AT UPENN WAS TO EXPLORE APPROACHES TO DESIGN FROM VARIOUS PERSPECTIVES AND IDEAS. IT PERFECTLY SUITED THE REQUIREMENT AS MOST COURSES WERE ELECTIVE. HE STRADDLED SCALES OF URBAN DESIGN TO INDUSTRIAL DESIGN, PARAMETRIC MODELLING/GENERATIVE DIGITAL DESIGN TOOLS TO SYSTEMS INTEGRATION AND ECOLOGICAL SUSTENANCE.

ALTHOUGH THE ENDEAVOUR WAS THE BEGINNING OF A MORE SERIOUS SEARCH FOR AN ANSWER TO THE QUESTION, IT LED TO THE QUESTION ITSELF BEING STATED MUCH MORE CLEARLY THAN BEFORE, (WHICH IS MORE IMPORTANT THAN ONE GIVES CREDIT TO). AN EVER EVOLVING ANSWER TO AN EVER EVOLVING QUESTION.

## HOW IS ARCHITECTURE DEFINED?

OR DESIGN FOR THAT MATTER. IN AN EVER CHANGING ENVIRONMENT, MORE SO IN TODAY'S CONTEXT, WHEN THE 'RATE' AT WHICH THE 'LIVING SYSTEM' IS CHANGING IS HIGHER THAN EVER, WE SEE DESIGN AS AN ENDEAVOUR THAT HELPS US ASSIMILATE THE CHANGE AND ELEVATE OURSELVES THROUGH IT – BEYOND MERE ADAPTATION.

SUNDAR BELIEVES IN INNOVATION GUIDED BY RELEVANT ANALYSIS AS THE RIGHT APPROACH TO ENGENDERING GOOD DESIGN SOLUTIONS. IN THAT APPROACH, FRAMING THE RIGHT QUESTIONS IS CRITICAL TO ARRIVING AT THE RIGHT SOLUTIONS. HE VALUES INTEGRITY AND HONESTY IN DESIGN AS KEYS TO CREATING LONGSTANDING IMPRESSIONS.

d o f [x]

*FEATURED WORKS:*

1. RESIDENCE AT AYANPURAM – DOF[X]
2. DR.MEHTA'S HOSPITAL @ CHETPET – REFURBISHMENT – DOF[X]
3. PROPOSED OFFICE SPACE – CITILIGHTS PROPERTIES – DOF[X]
4. PROPOSED RESIDENCE FOR MR.NANDA – DOF[X]
5. FARMHOUSE AT SATOLI, UTTARAKHAND – SVA
6. TEXVALLEY CONVENTION CENTRE – SVA
7. CLUBHOUSE AT URBAN TREE 'AWESOME' – SVA
8. CONFLUENCE BANQUETS AND RESORT – SVA
9. VILLA LAGUNA – SVA
10. CORPORATE INTERIORS FOR BOTREE SOFTWARE – SVA
11. AKULAM WATERFRONT RESIDENCES – SVA
12. TVH HOUSING – MORPHOGENESIS ARCHITECTURE STUDIO
13. BRITISH LIBRARY, HYDERABAD – SPACESCAPE ARCHITECTS

PRODUCT

14. WORK DESK UTILITY – DOF[X]

DISCLAIMER: ALL ARCHITECTURAL DESIGN WORKS FEATURED  
HERE ARE THE PROPERTIES OF THE ARCHITECTURE FIRMS  
MENTIONED AGAINST THE RESPECTIVE PROJECT NAMES

SUNDAR VELAN HAS LED AND PLAYED KEY ROLES IN THE  
FEATURED PROJECTS DURING HIS ASSOCIATION WITH THE  
RESPECTIVE ARCHITECTURE FIRMS

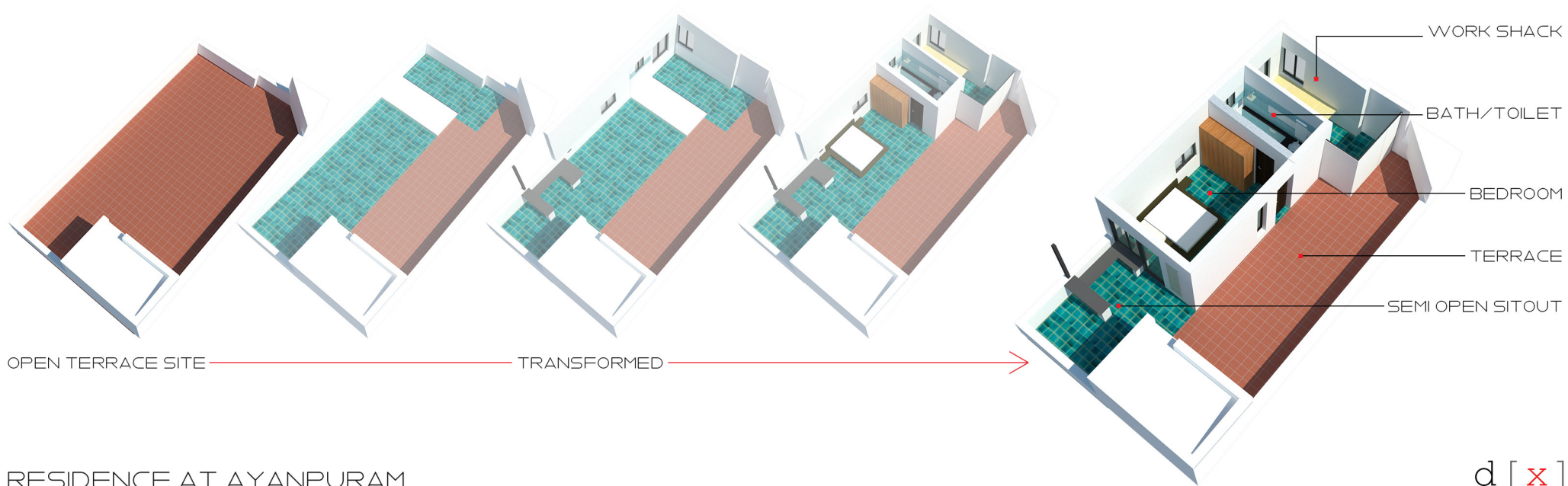
DOF[X] PROJECTS, OF COURSE, ARE EXCLUSIVELY HIS OWN.

d [x]



RESIDENCE AT AYANPURAM

dof [x]



RESIDENCE AT AYANPURAM  
dof [x]

d [x]



RESIDENCE AT AYANPURAM  
dof [x]



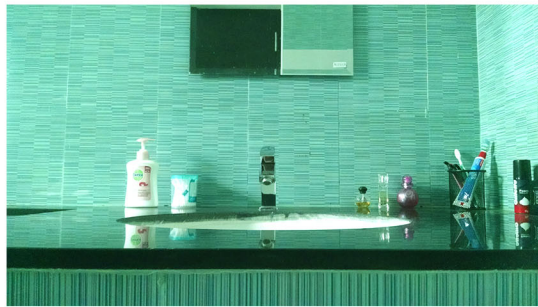
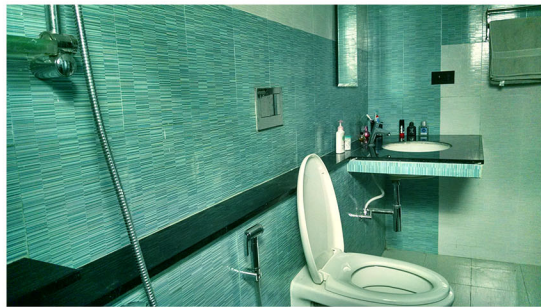
d [x]



RESIDENCE AT AYANPURAM  
do f [ x ]

d [ x ]





RESIDENCE AT AYANPURAM  
dof [x]

d [x]



RESIDENCE AT AYANPURAM  
dof [x]

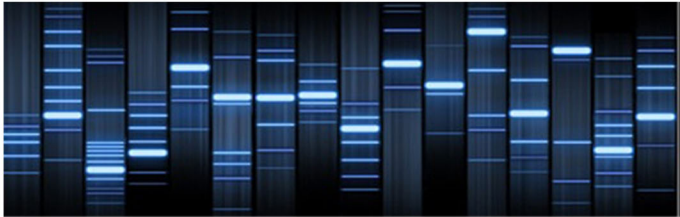


FACTFILE:  
RESIDENCE AT AYANPURAM  
350 SQFT  
CHENNAI  
COMPLETED 2015

d [x]

DR.MEHTA'S HOSPITAL @ CHETPET – REFURBISHMENT  
dof [x]





FACADE STRATEGY - THE SEAMLESS 'SKIN' ENVELOPE EXTERNAL ALL WEATHER PANEL CLADDING

HOW THIS STRATEGY WORKS :

- MINIMAL USE OF MATERIAL - WE DON'T NEED TO COVER THE ENTIRE FACADE. MEANS ECONOMY.

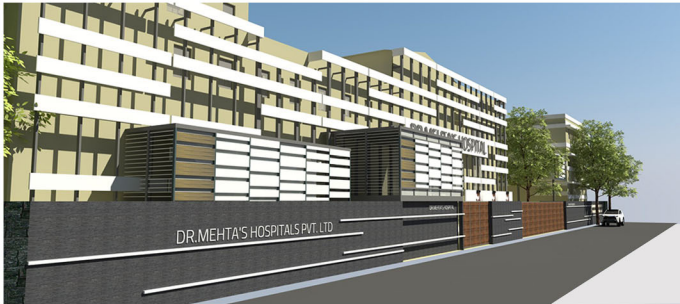
- ALLOWS FOR ACCESSIBILITY OF SERVICES AND WINDOWS AS IT STANDS 2 FEET AWAY FROM THE BUILDING.

- ALLOWS FOR DIFFERENT KINDS OF MATERIALS AND FINISHES TO BE USED. PANELS CAN BE LOW COST CEMENT FIBER BOARD OR HIGH END A.C.P, HPL (HIGH PRESSURE LAMINATE) BOARDS ETC.

- AESTHETICALLY, IT IS A CONTINUOUS SEAMLESS 'SKIN' THAT ENVELOPES THE BUILDINGS, THUS, UNIFYING ALL THE THREE BLOCKS, INTO A SINGLE DESIGN LANGUAGE.

- PRACTICALITY OF ENGINEERING - GIVEN THE EXISTING CONDITION, MINIMAL INTERVENTION TO THE EXISTING FACADE

DNA SEQUENCING - AS A DESIGN GENERATOR



DR.MEHTA'S HOSPITAL @ CHETPET  
dof [x]



VIEW FROM SOUTH EAST

d [x]





BEFORE



PROPOSED



WORK IN PROGRESS

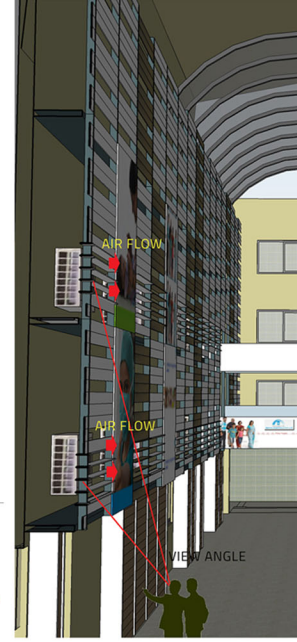
THE ATRIUM - SCREEN



VERTICAL PANELS TURNED HORIZONTAL WHERE THERE ARE AC UNITS (AND WINDOWS) TO ALLOW AIR FLOW.

WHAT DOES IT SOLVE?

1. ALLOW AC VENTS TO DISPERSE AIR FREELY (A TECHNICAL REQUIREMENT)
2. BLOCK VIEW OF AC UNITS FROM ATRIUM FLOOR, OWING TO THE REORIENTATION



DR. MEHTA'S HOSPITAL @ CHETPET  
 dof [x]

d [x]



RENDER

## THE ATRIUM – SCULPTURE

FOCAL ELEMENT,

SCULPTURE,  
SEAT,

IT IS A THING THAT SAYS, THIS SPACE IS NOT JUST ABOUT FUNCTIONALITY AND UTILITY – IT IS ABOUT 'PLAY', 'ENGAGE', 'ELEVATE'.....

FACTFILE:

DR.MEHTA'S HOSPITAL –  
REFURBISHMENT  
FACADE & INTERIORS  
CHENNAI  
49,000 SQFT  
ON GOING



RENDER



PHOTOGRAPH

DR.MEHTA'S HOSPITAL @ CHETPET

do f [ x ]

d [ x ]

PROPOSED OFFICE SPACE – CITILIGHTS PROPERTIES

dof [x]





PROPOSED OFFICE SPACE – CITILIGHTS PROPERTIES  
do f [ x ]



d [ x ]



FACTFILE:  
 OFFICE SPACE –  
 CITILIGHTS PROPERTIES  
 ARCHITECTURE  
 & INTERIORS  
 CHENNAI  
 1275 SQFT  
 ON GOING



PROPOSED OFFICE SPACE – CITILIGHTS PROPERTIES  
 dof [x]

d [x]

PROPOSED RESIDENCE FOR MR.NANDA

dof [x]



PROPOSED RESIDENCE FOR MR NANDA

dof [x]



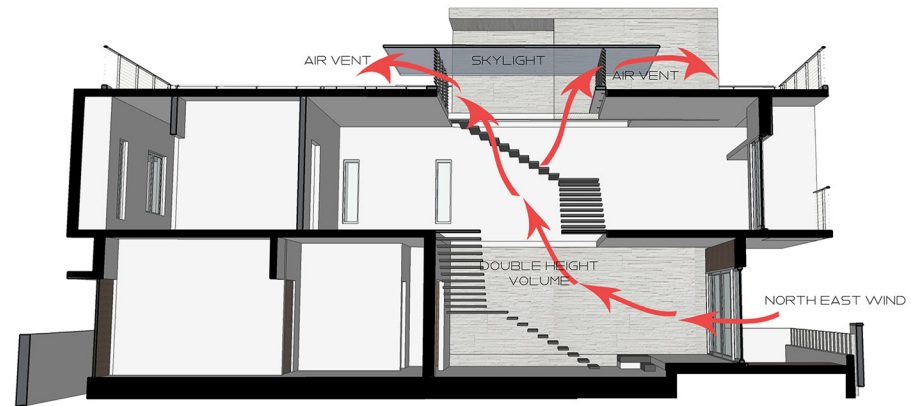
d [x]





PROPOSED RESIDENCE FOR MR.NANDA

do f [x]



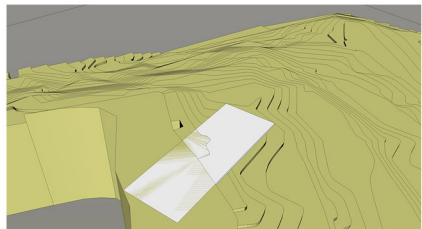
LONGITUDINAL SECTION -  
INTERNAL WIND MOVEMENT

FACTFILE:  
PROPOSED RESIDENCE FOR MR.NANDA  
ARCHITECTURE  
CHENNAI  
1650 SQFT  
PROPOSAL

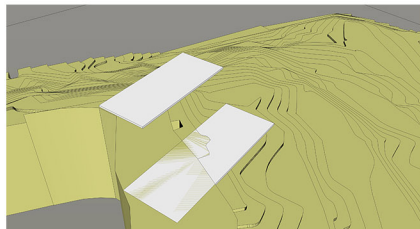
d [x]



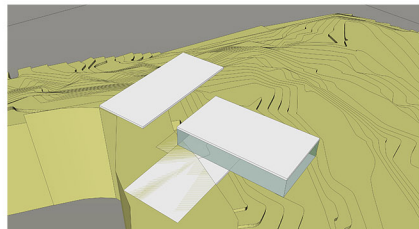
FARMHOUSE AT SATOLI, UTTARAKHAND  
(SVA)



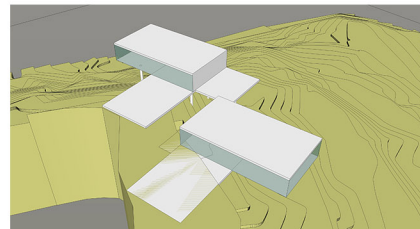
GROUND PLANE



HIGH PLANE

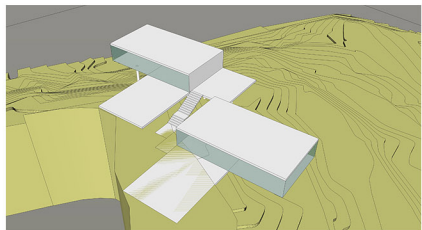


GROUND POD - PUBLIC

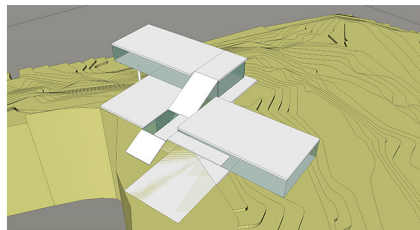


HIGH POD - PRIVATE

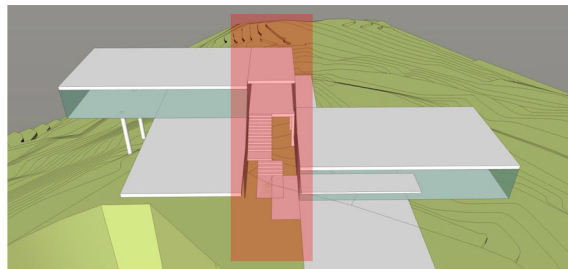
SPLIT PLANES



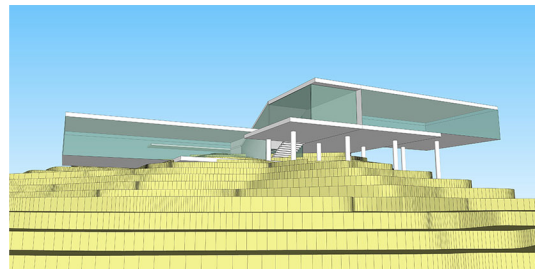
STAIR - CONNECTOR SPINE



CONNECTED PODS

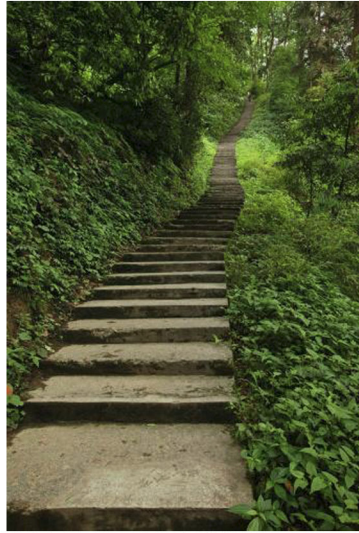


CENTRAL STAIR SPINE



FARM HOUSE AT SATOLI, UTTARAKHAND  
(SVA)

d [ x ]



CENTRAL SPINE INSPIRATION



EXPRESSION



FARM HOUSE AT SATOLI, UTTARAKHAND  
(SVA)



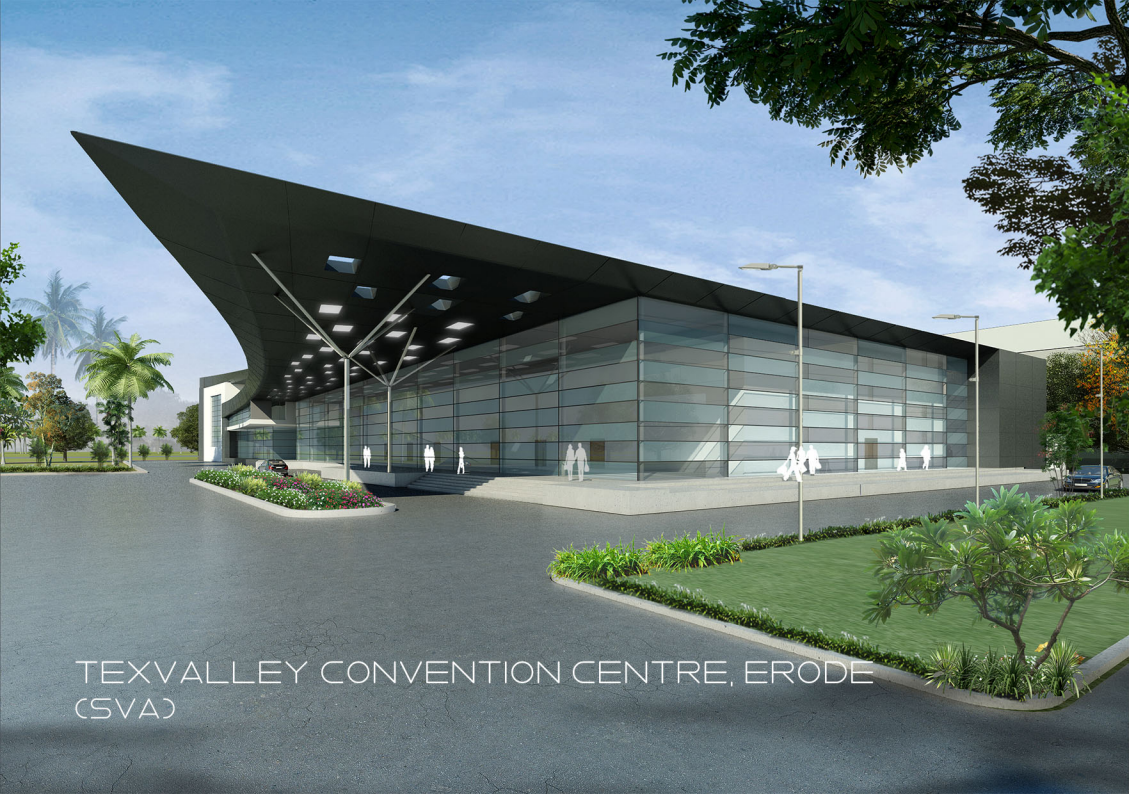
FACTFILE:  
FARMHOUSE AT SATOLI  
2,700 SQFT  
SATOLI, UTTARAKHAND  
PROPOSAL

FARM HOUSE AT SATOLI, UTTARAKHAND  
(SVA)

d [ x ]

TEXVALLEY CONVENTION CENTRE, ERODE  
(SVA)



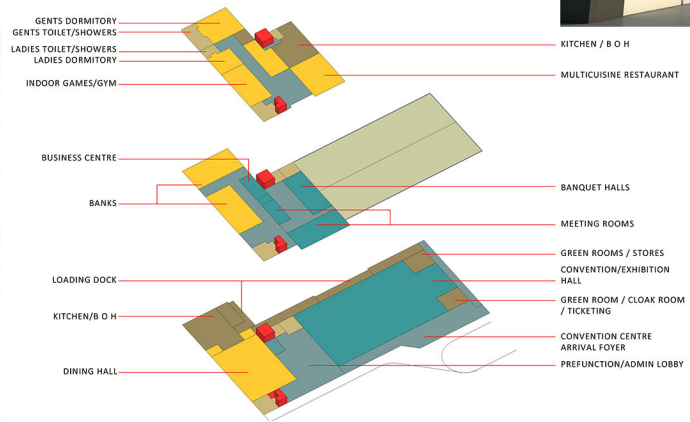


TEXVALLEY CONVENTION CENTRE, ERODE  
(SVA)

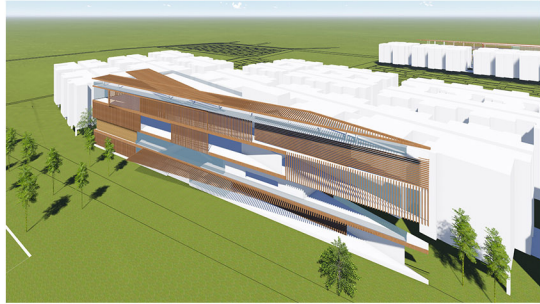
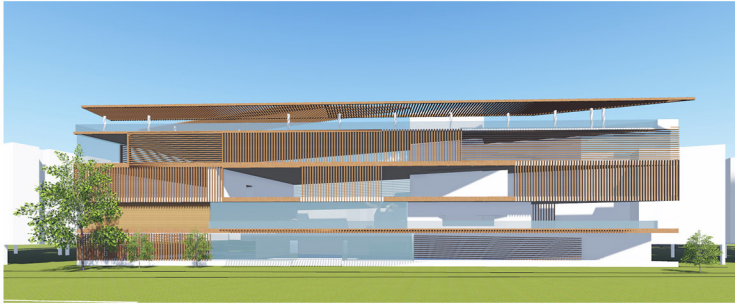
FACTFILE:  
 TEXVALLEY CONVENTION CENTRE  
 ERODE  
 1,70,000 SQFT  
 UNBUILT (COMPETITION ENTRY)



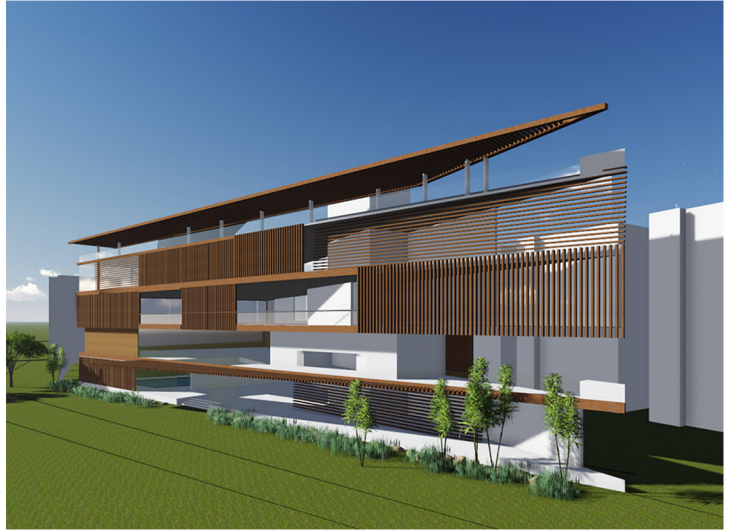
PROGRAM DISTRIBUTION



CLUBHOUSE AT URBAN TREE 'AWESOME'  
(SVA)



FACTFILE:  
CLUBHOUSE AT URBAN TREE 'AWESOME'  
20,000 SQFT  
CHENNAI  
PROPOSAL



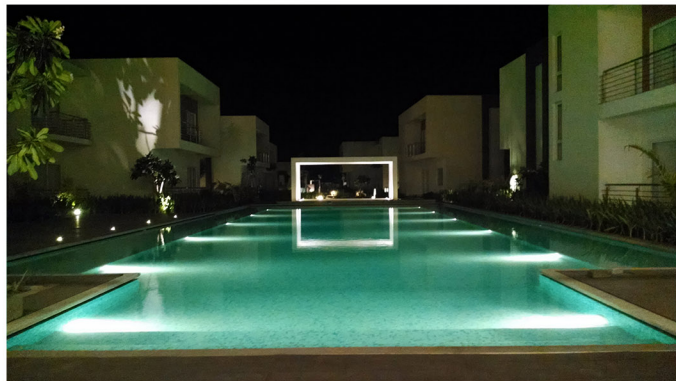
CLUBHOUSE AT URBAN TREE 'AWESOME'  
(SVA)



CONFLUENCE BANQUETS & RESORT, ECR, MAMALLAPURAM  
(SVA)



CONFLUENCE BANQUETS & RESORT, ECR, MAMALLAPURAM  
(SVA)



FACTFILE:  
CONFLUENCE BANQUETS AND RESORT, ARUN EXCELLO GROUP

MAMALLAPURAM

CHENNAI

1,54,000 SQFT

COMPLETED 2014

CONFLUENCE BANQUETS & RESORT, ECR, MAMALLAPURAM  
(SVA)

d [ x ]

VILLA LAGUNA, ALLEPEY, KERALA  
(SVA)



FACTFILE:

VILLA LAGUNA, ARUN EXCELLO GROUP

LAKE FACING VILLA DEVELOPMENT

ALLEPPEY, KERALA

45,000 SQFT

CONSTRUCTION



VILLA LAGUNA, ALLEPPEY, KERALA  
(SVA)

d [ x ]

CORPORATE INTERIORS FOR BOTREE SOFTWARE  
(SVA)





FACTFILE:  
BOTREE SOFTWARE  
CORPORATE INTERIORS  
CHENNAI  
21,000 SQFT  
COMPLETED 2012 -13

CORPORATE INTERIORS FOR BOTREE SOFTWARE  
(SVA)

d [ x ]

AKULAM WATERFRONT RESIDENCES, TRIVANDRUM  
(SVA)





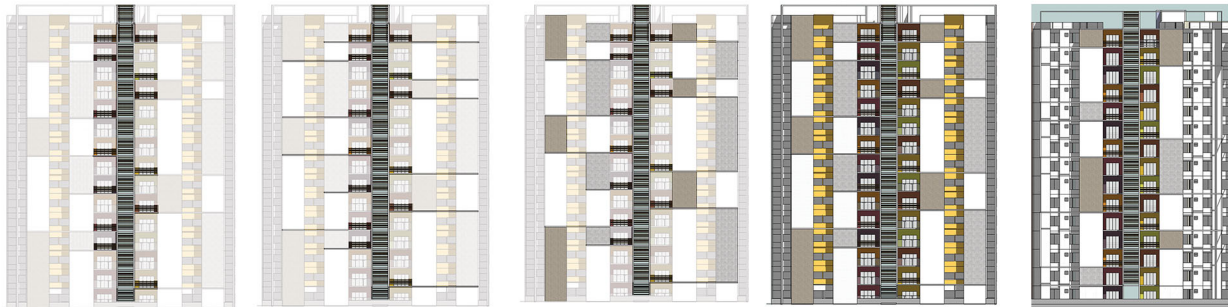
FACTFILE:  
AKULAM WATERFRONT  
RESIDENCES –  
MPG REAL ESTATE  
1,86,000 SQFT  
UNBUILT  
TRIVANDRUM



AKULAM WATERFRONT RESIDENCES, TRIVANDRUM  
(SVA)

d [ x ]

TVH HOUSING, COIMBATORE  
(MORPHOGENESIS ARCHITECTURE)



FACTFILE:  
TVH HOUSING, COIMBATORE  
ELEVATION STRATEGY  
COIMBATORE  
UNBUILT

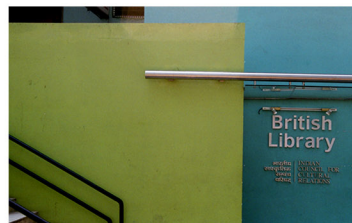


TVH HOUSING, COIMBATORE  
(MORPHOGENESIS ARCHITECTURE)

BRITISH LIBRARY, HYDERABAD.  
(SPACESCAPE ARCHITECTS)



FACTFILE:  
BRITISH LIBRARY  
INTERIORS  
HYDERABAD  
2650 SQFT  
COMPLETED 2005.



BRITISH LIBRARY, HYDERABAD.  
(SPACESCAPE ARCHITECTS)

d [ x ]



o b j e c t

d[x]



WORK DESK UTILITY  
do f [ x ]



d [ x ]

## THE IDEA

QUITE OFTEN WE FIND WHAT WE USE AS A PENSTAND BECOMES 'MORE' THAN JUST A PENSTAND – IT BECOMES A DUMP FOR SMALLER OBJECTS – CLIPS, STAPLES, RUBBER BANDS ETC. WHICH COLLECT AT THE BOTTOM.

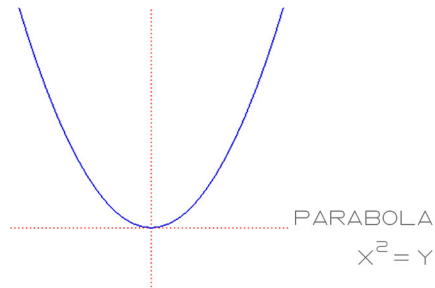
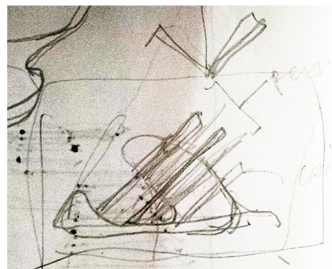
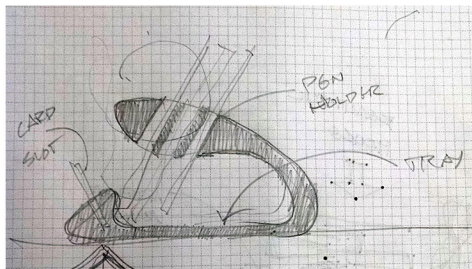
WHAT IF THE STAND HAS AN ACCESSIBLE BOTTOM AND IT IS DESIGNED TO HOLD THE SMALL FRY STUFF? SO HERE IT IS, AN OPEN PENSTAND WITH AN ARM WITH HOLES TO HOLD PENS AND A TRAY AT THE BOTTOM HOLDS THE SMALL STUFF.

## THE FORM – PARABOLA

IT IS – AMONG OTHER THINGS IN NATURE – THE PATH TRACED BY AN OBJECT THROWN UP AND FALLING UNDER THE INFLUENCE OF GRAVITY.

THE PARABOLIC CURVE, WHEN MANIFESTED AS A PHYSICAL ENTITY, EXHIBITS INHERENT STRUCTURAL INTEGRITY, PURELY BY VIRTUE OF ITS FORM, WHICH IS UTILISED IN SUSPENSION BRIDGES, ARCHES ETC

THE CURVE OF THE OBJECT'S NECK IS DERIVED FROM A PARABOLIC CURVE, INTEGRATING THE AESTHETIC PURITY OF A FORM AND ITS INNATE STRUCTURAL CHARACTER.



WORK DESK UTILITY

dof [x]

d [x]

d o f [x]  
architecture interiors objects graphics

#93, new street, ayanpuram, chennai - 600023

sundar@dofx.in

+91 89397 11050

d [x]