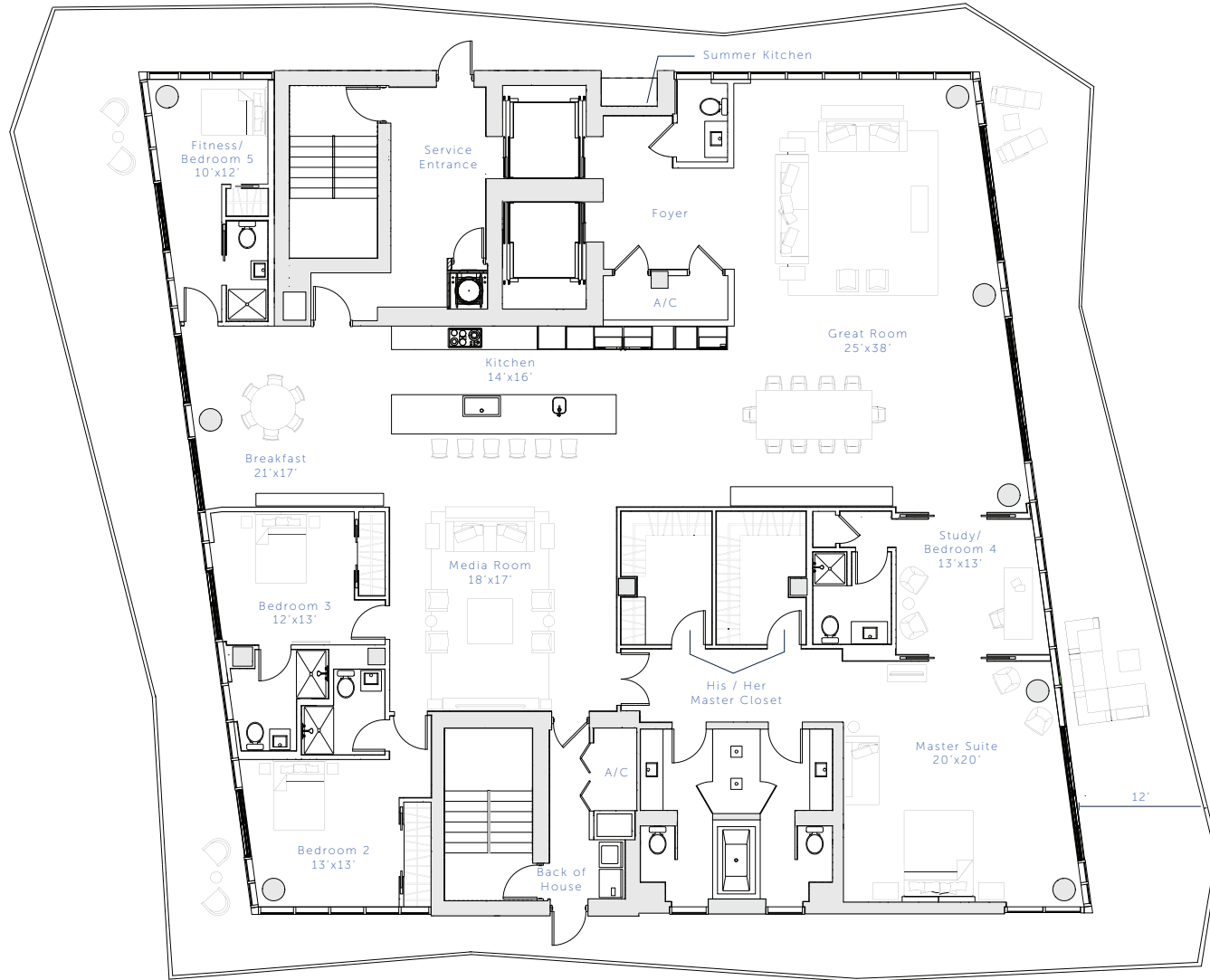


TOWER ESTATE



AREA

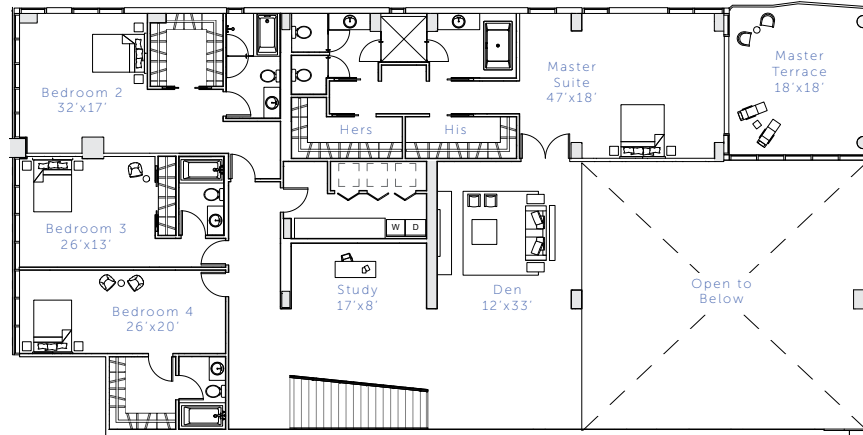
Interior: 5,015 FT² / 465.91 M²

Avg. Terrace: 2,198 FT² / 204.2 M²

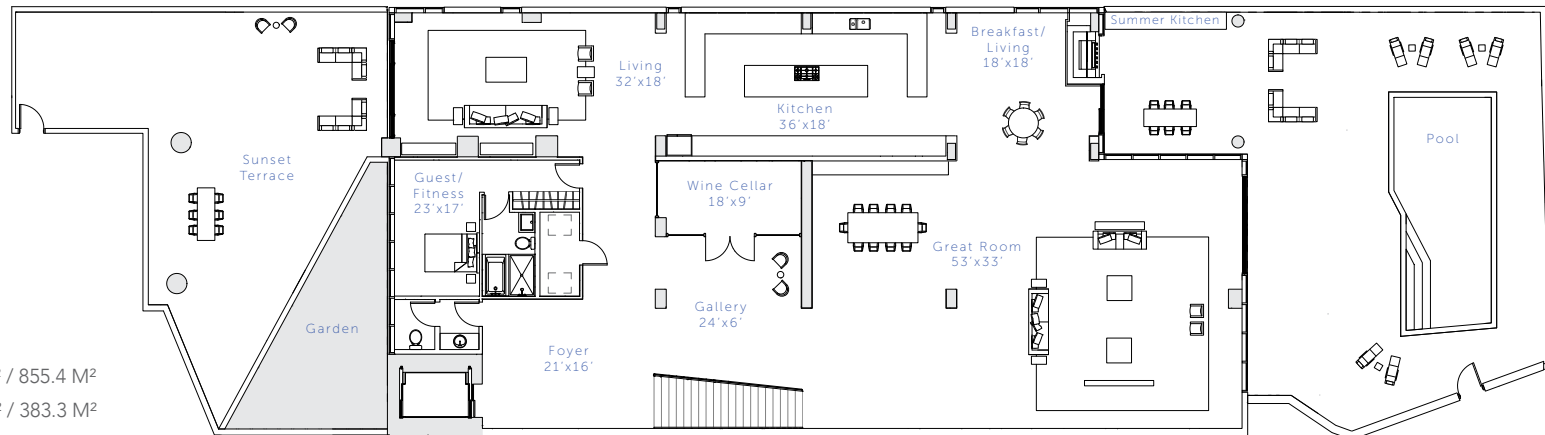
Copyright © 2014. Stated square footages and dimensions of residences are measured to the exterior boundaries of the exterior walls and the centerline of interior demising walls between units and in fact vary from the square footages and dimensions that would be determined by using the description and definition of the "Unit" set forth in the Declaration of Condominium, which generally only includes the interior surfaces between the perimeter walls and excludes all interior structural components and other common elements. The method of measurement used in these materials is generally used in sales materials and is permitted to differ from the method used to compute the Units with units in other properties that utilize the same method. Refer to Exhibit "D" to the Declaration of Condominium for the unit dimensions calculated based on the description and definition of the "Unit" set forth in the Declaration. Terrace and other Limited Common Elements are not part of the Unit. Measurements of rooms set forth herein are generally taken at the furthest points of each given room (as described above and as if the room were a perfect rectangle), without regard for any columns or corridors. Accordingly, the interior square dimensions of the actual room will typically be smaller than the product obtained by multiplying the stated length and width. All measurements are estimates based on preliminary plans and will vary with actual construction. All floor plans, specifications and other development plans are proposed and conceptual only, and are subject to change and will not necessarily precisely reflect the final plans and specifications.

NORTH VILLA

Level Two



Level One



AREA

Interior: 9,207 FT² / 855.4 M²
Terrace: 4,126 FT² / 383.3 M²