

# The Northern Grass



Fall  
Edition

Northern Kentucky Bluegrass Music Associa-

November  
2011

Keeping Bluegrass Music Alive In The Northern Kentucky Area

## Elections will be held at the November Turkey Jam on Friday, November 25, 2011 at Will Music in Florence

The following members have been selected by the Board and Advisors to run for 2012 election:

Pamela Messer - President  
Luther Hensley - Vice President

Myrna Murphy - Treasurer  
Jackie Bowling - Secretary



The following election process will be observed:

1. Nominations will be taken from the floor prior to voting.
  - a. Nomination to a post can be made by an active member of NKBMA who is present.
  - b. Nominee must be an active member of NKBMA.
  - c. Nominee must be present to accept the nomination.
2. Voting will be held by show of hands.
3. If voting appears to be divided members will be asked to stand and be counted.

Please try and be present to support the officers and exercise your opportunity to vote as a NKBMA member



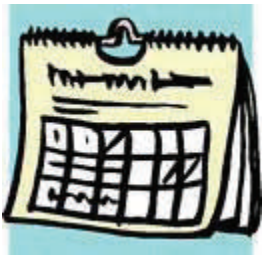
### NKBMA Beginner Banjo Raffle

The **Banjo Raffle** ticket was finally drawn at our September meeting and won by Tammie Herald of Florence, Kentucky! Congratulations, Tammie. A special thank you goes out to everyone who purchased a ticket. The Association raised \$200.00 from this drawing and it will be applied to the KSBTM Scholarship fund.

NKBMA.com  
**NKBMA.com**

## Click It To Get It!!

Get all the latest NKBMA news, calendar updates, local events and more. All this at right at your finger tips!  
[www.nkbma.com](http://www.nkbma.com)



# CALENDAR PAGE



## The Richwood Opry

The best place to experience Bluegrass and Country Music

Open jam every Saturday at 12 noon until showtime. \$2.00 donation\*

For more information call (859) 474-0554

### 2011 SCHEDULE

- **Nov. 18-DRY BRANCH FIRE SQUAD**
- **Nov. 19-JD CROWE & THE NEW SOUTH**
- **Nov. 25-Bobby Mackey (Country)**
- **Dec. 2-LARRY SPARKS & THE LONESOME RAMBLERS**
- **Dec. 9-Larry Stephenson Band**
- **Dec. 31-NEW YEARS EVE PARTY W/**
- **DARRELL WEBB BAND & GARY STRONG AND STRONG BLUE-GRASS**

Doors open at

6 pm

Music from 7 to 10

Seating is first come first served

**10915 Dixie Highway  
Walton, KY  
41094**

In the Journey building at the Richwood Flea Mkt

## NKBMA Upcoming Events Schedule

Tuesday – 11/15 – 630-10pm – Ma Crow & the LadySlippers - Claryville K of C Hall Alexandria, KY \$5.00 admission – bring a covered dish – food at 630pm music at 7pm. This event is ALWAYS the 3<sup>rd</sup> Tuesday of each month and features a different guest performer. Please contact Luther Hensley at 859-635-9450 or Jim Deaton at 859-760-4483 for more information.

Saturday – 11/19 – 6pm – Steve Bonafel & One Iota with Ma Crow – Willis/Woodsongs event \$8.00 members / \$10.00 non-members – Children under 12 are Free.

Saturday – 12/17 – 6pm – Tony Holt & Wildwood Valley Boys – Willis/Woodsongs event \$8.00 members / \$10.00 non-members – Children under 12 are Free.

Saturday – 01/21/12 – 6pm – Bluegrass 101 – Willis/Woodsongs event \$8.00 members / \$10.00 non-members – Children under 12 are Free.

Saturday – 02/11/12 – 6pm – Dean Osborne Band – Willis/Woodsongs event \$8.00 members / \$10.00 non-members Children under 12 are Free.

Saturday – 03/17/12 – 6pm – My Favorite Bluegrass Band – Willis/Woodsongs event \$8.00 members / \$10.00 non-members – Children under 12 are Free.

Saturday – 04/21/12 – 6pm – Karl Shiffett & Tommy Brown – Willis/Woodsongs event \$13.00 members / \$15.00 non-members – Children under 12 are Free.



# NKBMA Christmas Party



The NKBMA Member Christmas Party will be held again at the December Jam Session. Due to the fourth Friday being so close to the holiday – the jam and party will be held on Friday, December 16, 2011 at 6 pm at Willis Music on Mall Rd. Florence, KY.

We ask that everyone attending bring a covered dish to share. The Association will be providing the meat and cheese tray, bread, toppings, coffee and all paper products. There will be door prizes given away throughout the evening and entertainment will be provided by all of our local jammers.

Last year's party was a HUGE success and we all had a great time! Please join us again this year for food, fun and GREAT bluegrass music!

## Winter Membership Drive



At the November Board meeting we decided to give new and renewing members a break on their 2012 membership. If you join or renew by January 31, 2012 the cost of membership will be as follows:

Single - \$10.00 (regular \$12.00)  
Couple - \$12.0 (regular \$15.00)  
Band - \$22.00 (regular \$25.00)

Be sure to see either Myrna Murphy or Jackie Bowling to update your membership! You can also print a copy of the membership application from our website at [www.nkbma.com](http://www.nkbma.com) Look under the Join NKBMA tab.

## Ralph Stanley at The Richwood Opry

By Ron Simmons

I left home Saturday the 11<sup>th</sup> of September headed for The Richwood Opry to see what was left of a living legend. I was warned by more than one reliable source that I would be disappointed in what was in store. Bad news has a way of getting worse as the stories pile up like bricks where an old but memorable building used to stand. At least I wouldn't be too surprised if it was just a couple tunes from a cardboard image of Dr. Ralph and then the Clinch Mountain Boys the rest of the night.

That is where my head was as I sat waiting for Gary Strong to say the words of introduction. As he began to speak, all eyes were at the one corner of the room. The band came to the stage and thanked Gary for the words and began to play. Still the eyes were to the corner of the room even though the band sounded great. The smallest, slip of a man with wavy gray/white hair appeared with a roar from the audience, looking just like a toy I could have slipped in my pocket after making a good toss at the carnival. It was him! Dr. Ralph Stanley in person, walking slowly toward the stage with several folks attending to each step he took as if he could fly away at any minute. Almost everyone was standing including myself just to get a glimpse of a legend, a star, an innovator, a very small but very beloved Bluegrass "Mountain Style" "every tune from the heart", musician and singer.

The story could end right here because that is all I really expected to get. However the story goes like this from this point on:

**Dr. Ralph Stanley and Clinch Mountain Boys gave the performance of a lifetime.** The little man with the great big heart was on the stage for both sets the whole night singing, cracking jokes, bonding with his audience and leaving no doubt he was having fun and feeling the love.

At one point he even donned the banjo, which I'm sure was as heavy as he was, and clawed hammered his way into Richwood Opry history. Let there be no mistake. Dr. Ralph must have been in the mood to perform because he did what the enthusiastic audience hoped for and more, completely evaporating the anxieties I and others might have had. I would have paid the price at the door three times over to see that performance.

I'd pay a lot to see Bill Monroe, John Duffey, Jimmy Martin, Charlie Waller, and the list goes on. But unfortunately I can't see them at any price. There are future stars of this wonderful music that take Willis's or the Richwood Opry stage each week for almost nothing just to get you to hear them. I'll bet if you were to ask Dr. Ralph if it was worth doing, he'd probably say that's why he's been doing it for 65 years.

Bless your heart and that foggy mountain voice, Ralph.

Ron Simmons

# The Jam Sessions Are Coming!

Many jam sessions have opened back up for the 'off-festival' season. Check out the dates and locations below:

Sunday, November 13<sup>th</sup> – 2-5pm – Boone County Library & NKBMA Bluegrass Under the Dome – this is a joint effort of the library and NKBMA to reach out to bluegrass musicians in the area. The jam will be held in a 'parking lot' format that will allow everyone to join in at their own speed. Please be sure to join us if you can!

Sunday, November 13<sup>th</sup> – 2-5pm – Calvin A Perry Community Center in Alexandria, KY – Russell Turner is having a fish fry and free open jam session. No cover or donation required. Please a covered dish to share. See you there!

FIRST Friday each month the Gene Thompson Jam Session is held at the Hebron Mason Lodge on Petersburg Road in Hebron from 6-10 pm. Please leave a small donation at the door. Snacks are available.

SECOND Friday each month the Newport Jam Session/Open Mic night is held at the Newport Masonic Lodge at 6<sup>th</sup> & Park St in Newport from 7-10 pm. The jam is run by Russell Turner. There is \$3.00 donation at that the door that goes to the Newport Masons Needy Child Fund. Contact Russell Turner at 859-743-5281 for more information.

FOURTH Friday each month the NKBMA Jam Session is held at Willis Music on Mall Road in Florence, KY from 6-9pm. A small donation at the door is appreciated. We also randomly hold Split-the-Pot raffles and door prize drawings.

## When The Earth Stands Still

By Ron Simmons

**The earth is a right of passage  
God looks for mankind at its best  
Some have stood before the cannon  
And so honorably faced that test**

**Many have gone to shores of Eternity  
Earthly things they've shed for good  
They fought the righteous fight and  
If asked to serve again....they would**

**They prayed that every war was final but  
As young men and women they knew  
Some were there to sacrifice themselves  
To make those prayers come true**

**The remaining gallant who served and lived  
Heroes with courageous hearts and soul  
Some day will join their sisters and brothers**

**For the last platoon, their final patrol**

**The Earth will stand still for a moment  
When you have all passed review  
God will host that great reunion  
To pin Heaven's Medal of Honor on you**

**Your children thank, love and salute you  
You are the bravest hearts of the Red,  
White & Blue**

## Local Bluegrass Venues that need your support!



Some of the best bluegrass comes to our area in the following venues. Please visit these whenever you can and support the artists and promoters.

- The Richwood Opry - 10915 Dixie Highway Walton, KY 41094 (In the Journey building at the Richwood Flea Mkt) 859-474-0554 for more information
- The Famous Old Time Music Company – home of Vernon McIntyre's Appalachian Grass – 20322 SR 33 Wapakoneta, Ohio 45895 – 419-568-1220 or 513-607-1874
- Meadowgreen Park Music Hall – Clay City, KY – Call 606-663-9008 for more information



Located across from the Florence Mall and next to H.H.Gregg on Mall Road, our Florence Superstore has it all. Store manager Rick Fuchs brings years of service and experience to meet your every need. Our Florence location also features a 24 track digital recording studio and performance center in addition to the Kate Young Music Makers studios and lesson center.

7567 Mall Road  
Florence, Ky. 41042  
859-525-6050

# From The Desk of Our President

Pamela Messer

I've had a wonderful time serving as President of the Association this year, and I feel that we have accomplished a tremendous amount. There is more bluegrass in this area now than you can shake a stick at and we are continually trying to promote and sustain more. Next year's agenda has several more options that are aimed locally. One being the possibility of a mini-festival, scholarship awards for high school students who are taking bluegrass instrument lessons, more school visits and participation, more community involvement, and the list goes on and on.

I have agreed to accept a second term as President, and will look forward to working everyone again if I am re-elected. The group that makes up the Executive and Advisors are some of the most wonderful and creative people I've ever met. (They're a lot of fun, too!) If you're a member and have never attended a Board meeting you should join us!

We meet on the FIRST Wednesday of the month at 6 pm at Willis Music on Mall Rd. Florence, KY (unless otherwise published on our website). There are several committees that need support to continue our bluegrass and traditional music promotion efforts. If you can help – and I KNOW there are many talented individuals among us – PLEASE ask or join us at one of our monthly board meetings. There is still so much to do, and EVERYONE is important to our efforts!

I hope that everyone has wonderful and blessed Christmas (YES – I said CHRISTMAS!), and a very happy and prosperous new year.

Prayers –

Pamela



## Willis / Woodsongs Coffeehouse Concert Schedule on Public Access



Be sure to check out our past concerts!



Public Access Local Cable Stations	Channel #	Day of Week & Time of Day to View
TBNK-Boone & Kenton Co.	21	Tuesday 4pm Saturday 7pm
Media Bridges-Cincinnati	4	Saturday 4pm Sunday 2 am
Union Township, Ohio	15	Monday 11 pm Thursday 8am Sunday 2 pm
ICRC – Hamilton Co, Ohio	8	Saturday 530 pm Tuesday 8 pm

You can also view the videos on the web at:

- YouTube search – Chaosclub1 OR Willis Music Florence
- Facebook – Willis Music Florence Super Store
- Willis Music Performing Arts Center
- Reverbnation-Willis Music Performing Arts Center
- Willis Music TV (in the Willis Music Florence Location)

## BANDS! BANDS! BANDS!

Our current member Bluegrass bands are some of the best in the area. Please consider hiring them for your special events! Bluegrass pickers need fed, too!

- Diamond Head Mountain – 859-635-3684
- The New Godspeed – 859-322-8416
- Bluegrass Mafia Band – 513-276-1094
- The Burnin' Bluegrass Band – 513-652-1347
- Custom Made Bluegrass – 859-226-9390
- Crossroads – 859-689-7431
- Gary Strong Bluegrass Band – 859-992-5775
- Licking Valley Bluegrass – 859-356-9241
- Ma Crow & the Lady Slippers – 513-861-6785
- Missy Warner Band – 513-768-6426
- My Favorite Bluegrass Band – 513-553-6115
- Retread Bluegrass Band – 513-793-6477
- Tommy Brown & County Line Grass – 502-594-0962
- Vernon McIntyre's Appalachian Grass – 419-568-1220



NKBMA  
PO Box 133  
Hebron, Ky. 41048

