

“SLOW GHOSTS AT PLAY” HSS-05 HALLOWEEN STREET SIGN COLLECTION



CANVAS DESIGN BY KIMBERLY ANN NEEDLEPOINT
STITCH GUIDE DESIGN & STITCHING BY KIMBERLY ANN NEEDLEPOINT
DIAGRAMS BY KIMBERLY ANN NEEDLEPOINT

Photocopying of this stitch guide is invited.
Production by Kimberly Ann Needlepoint.
WWW.KIMBERLYANNNEEDLEPOINT.COM

THREAD: “SLOW GHOSTS AT PLAY” HSS-05

<u>COMPANY</u>	<u>NAME</u>	<u>NUMBER</u>	<u>*QUANTITY</u>
KIMBERLY ANN NEEDLEPOINT	SLOW GHOSTS AT PLAY	HSS-05	1
RAINBOW GALLERY	SPLENDOR	S978	1
RAINBOW GALLERY	FYRE WERKS- SOFT SHEEN	FT69	1
RAINBOW GALLERY	FYRE WERKS- SOFT SHEEN	FT11	1
RAINBOW GALLERY	PETITE SPARKLE RAYS	PS300	1

*Please note recommended thread is based on expected usage. Individual-stitch technique/style may vary.

<u>ADDITIONAL TOOLS NEEDED:</u>
*SIZE 20 TAPESTRY NEEDLE
<u>RECOMMENDED TOOLS:</u>
STRETCHER BARS
BRASS TACKS
SMALL NEEDLEPOINT SCISSORS

STITCH GUIDE: “SLOW GHOSTS AT PLAY” HSS-05

<u>DESIGN AREA</u>	<u>THREAD</u>	<u>NUMBER</u>	<u>STRANDS</u>	<u>STITCH</u>	<u>NOTES</u>
ORANGE BACKGROUND	R.G.-SPLENDOR	S978	4	VICTORIAN STEP	
ORANGE BOARDER: CORNERS	R.G.-FRYE WERKS	FT69	1	MOSAIC SQUARE	*MOSAIC S. STITCH IS OVER 4 THREADS, SEE CHART FOR DETAILS
ORANGE BOARDER	R.G.-FRYE WERKS	FT69	1	OBLONG	
BLACK BOARDER & LETTERING: “SLOW”	R.G.-FRYE WERKS	FT11	1	SLANTED GOBELIN	*SLANTED G. STITCH IS OVER 2 THREADS, SEE CHART FOR DETAILS
LETTERING: “GHOSTS AT PLAY”	R.G.-FRYE WERKS	FT11	1	TENT	
GHOST: WHITE BODY	R.G.-PETITE SPARKLE RAYS	PS300	1	SKIP BASKETWEAVE	
GHOST: FACE	R.G.-FRYE WERKS	FT11	1	TENT	

*****SHARE YOUR STITCHING AND FOLLOW KIMBERLY ANN NEEDLEPOINT ON INSTAGRAM!*****

@KIMBERLYANNNEEDLEPOINT

#KIMBERLYANNNEEDLEPOINT #HALLOWEENSTREETSIGNS #FREESTITCHGUIDE

ORANGE BACKGROUND: VICTORIAN STEP

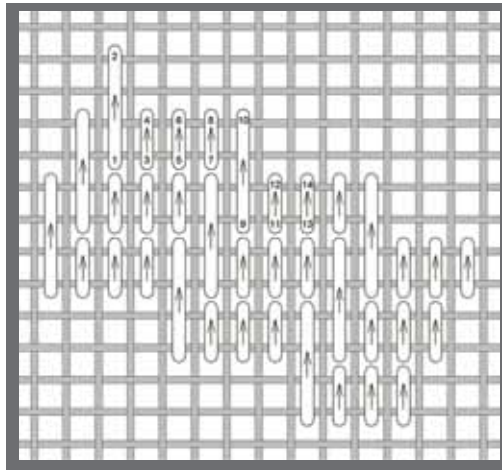


IMAGE KIMBERLY ANN NEEDLEPOINT

BLACK BORDER & LETTERING "SLOW": SLANTED GOBELIN STITCH

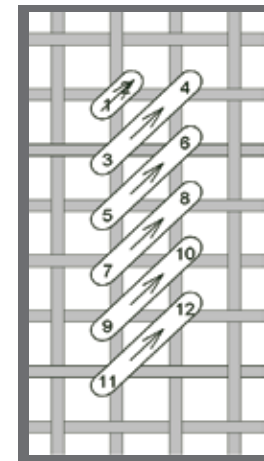


IMAGE KIMBERLY ANN NEEDLEPOINT

ORANGE BOADER: OBLONG STITCH & CORNERS MOSAIC SQUARE OVER 4 THREADS

STEP 1: Begin stitch around the whole outer purple boarder.

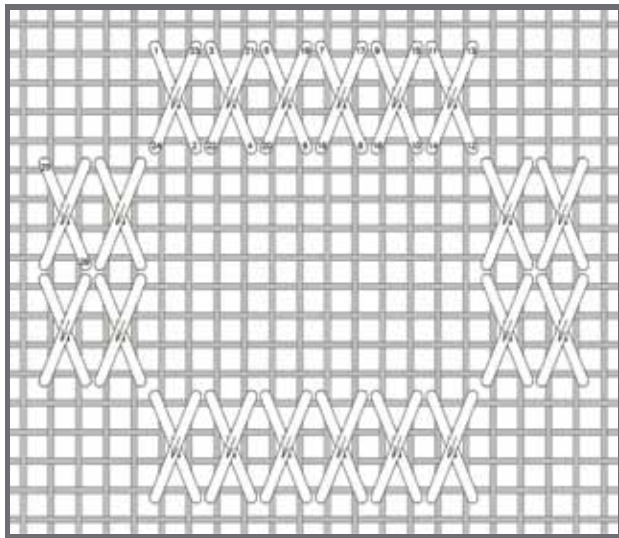


IMAGE KIMBERLY ANN NEEDLEPOINT

STEP 2: Stitch over thread from step 1.

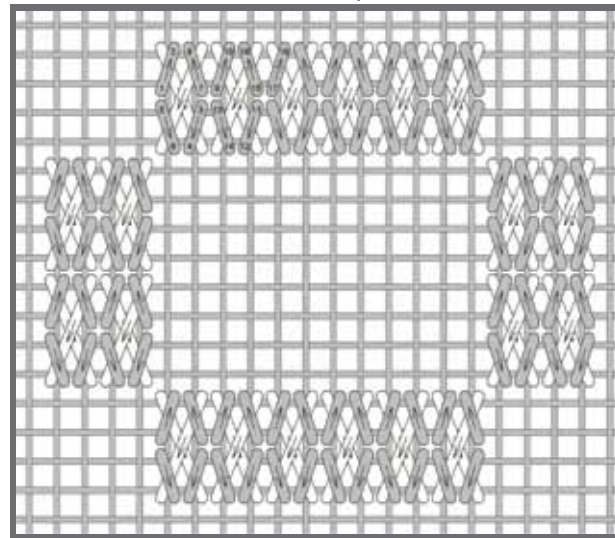


IMAGE KIMBERLY ANN NEEDLEPOINT

STEP 3: Stitch mosaic stitch in each corner.

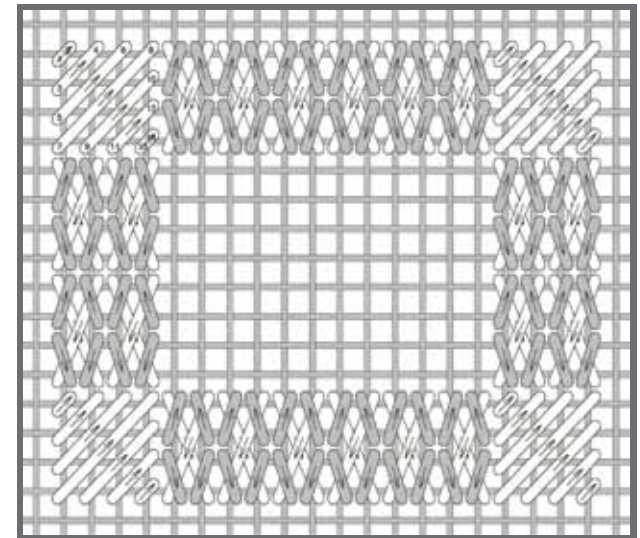


IMAGE KIMBERLY ANN NEEDLEPOINT

LETTERING~ “GHOSTS AT PLAY” & GHOSTS FACE: TENT STITCH

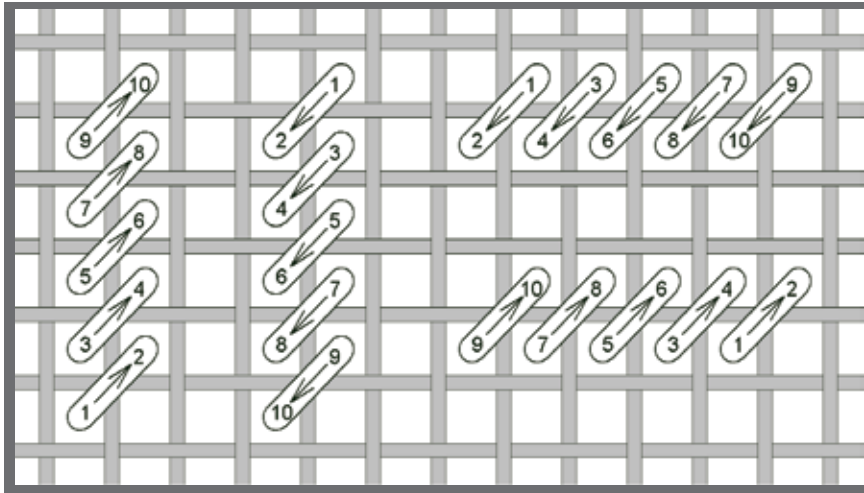


IMAGE KIMBERLY ANN NEEDLEPOINT

GHOST: SKIP BASKETWEAVE STITCH

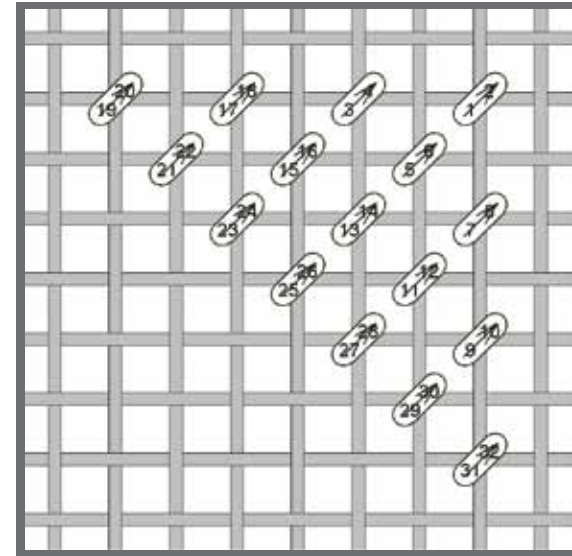


IMAGE KIMBERLY ANN NEEDLEPOINT