

The Dark Tower of Dallas

Occultic Degree Pyramid Headings

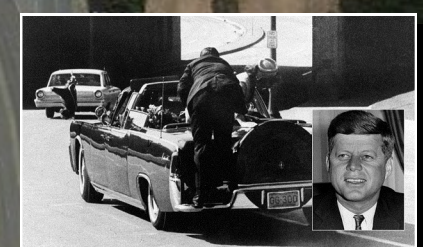
Ritualistic Murder of the US President John F. Kennedy

Dallas Texas - Nov 22, 1963

Is it mere coincidence that it was on November 22 and there is precisely .22 miles from the Reunion Tower to the apex of the Dealey Pyramid? Is it a mere coincidence that it is .22 Nautical Miles from the Tower to the Kill Shot were the sacrificial victim was executed upon the Pyramid's 'altar'? All these peculiarities could not have been orchestrated to also correlated to factor the number 33 with Latitude and Longitude. Grid coordinates are fixed on Earth but to have the factor of 'timing' correspond to the calendar day and distance in mathematically impossible to be a random chance.



Reunion Tower



.22 miles
heading

13°
Heading

96 48' 33.00" W

0.33°

FROM DARK TOWER
to Kill Shot

7.77° Heading
444 Yards
.22 Nautical Miles



The city of Dallas, at its center downtown, has a prominent Tower that commands the skyline and overshadows Dealey Plaza called 'Reunion'. This was the crime scene of the murder of the US President John F. Kennedy on November 22, 1963. The Plaza 'triangle' or Pyramid is a hidden 'capstone' of the All-Seeing Eye of lucifer that is awaiting the 'REUNION' to this luciferian temple of worship. The Tower is called just that, Reunion Tower that is beckoning the reunion of what?

It is beckoning the reunion of the 'capstone' with the unfinished pyramid or 'tower' that needs to be completed. This echoes the story of the Tower of Babel that the GOD of the Bible, YHWH interrupted man's effort to achieve 'godhood', etc. In essence, it is the luciferian 'Great Work' of having satan complete his unholy 'temple' or tower amongst men.

From the 'Dark' Tower, if you project several headings in degrees, to the 'capstone pyramid', you end up with some amazing and hidden esoteric and occultic/satanic repeating numbers. They are as always, a factor or 33, 96, 32, 13, 22, etc. Each has its own meaning and reason for usage in influencing people & places. These numbers are sacred in the scheme of witchcraft used to gain supernatural demonic powers by those that are the Masters of the Pyramid.



The exact site of the Kill Shot is in φ ratio to the Obelisk that later would commemorate the event in bronze plaques.

Dealey Plaza

the 14th 'Station of the Cross' is the Capstone

Kill Shot

13th 'Station' Obelisk

96 48' 28.33" W

17.76°

20.16°

50 YEARS IN DENIAL IS ENOUGH.



FREE THE FILES. FIND THE TRUTH.

In the wake of the 50th Year Anniversary of the assassination of President Kennedy, these charts illustrates some hidden never before revealed aspects of the assassination in terms of number patterns based off of GPS. With the aid of modern GPS coordinates, specific spots on Earth can be numerically identified down to the seconds of degree. The Murder of US President John F. Kennedy in Dallas Texas on November 22, 1963 was a luciferian ritualistic had to take place on a certain date, certain hour, certain angle, certain degree heading to achieve its intended goal. This murder was an act of worship of sacrificially killing of the most powerful man on Earth at the time. It was to take place within the web of the Masters of the Pyramid 'capstone'. No mere mortal could have orchestrated these events to be in sync and in precision numerologically. The Pattern involved certain repeating sacred numbers in heading, seconds, & degrees. In essence, this occultic sacrificial ritual was a type of 'crucifixion'. His slow drive up the Obelisk was like Christ carrying His Cross to the spot of His execution. The Dallas city grid Obelisk is a Pyramid of 13 sectioned-off satanic levels of initiation. The 'Capstone' is the 14th as in the 14th 'Station of the Cross' that culminated in the President's assassination and ritualistic murder.