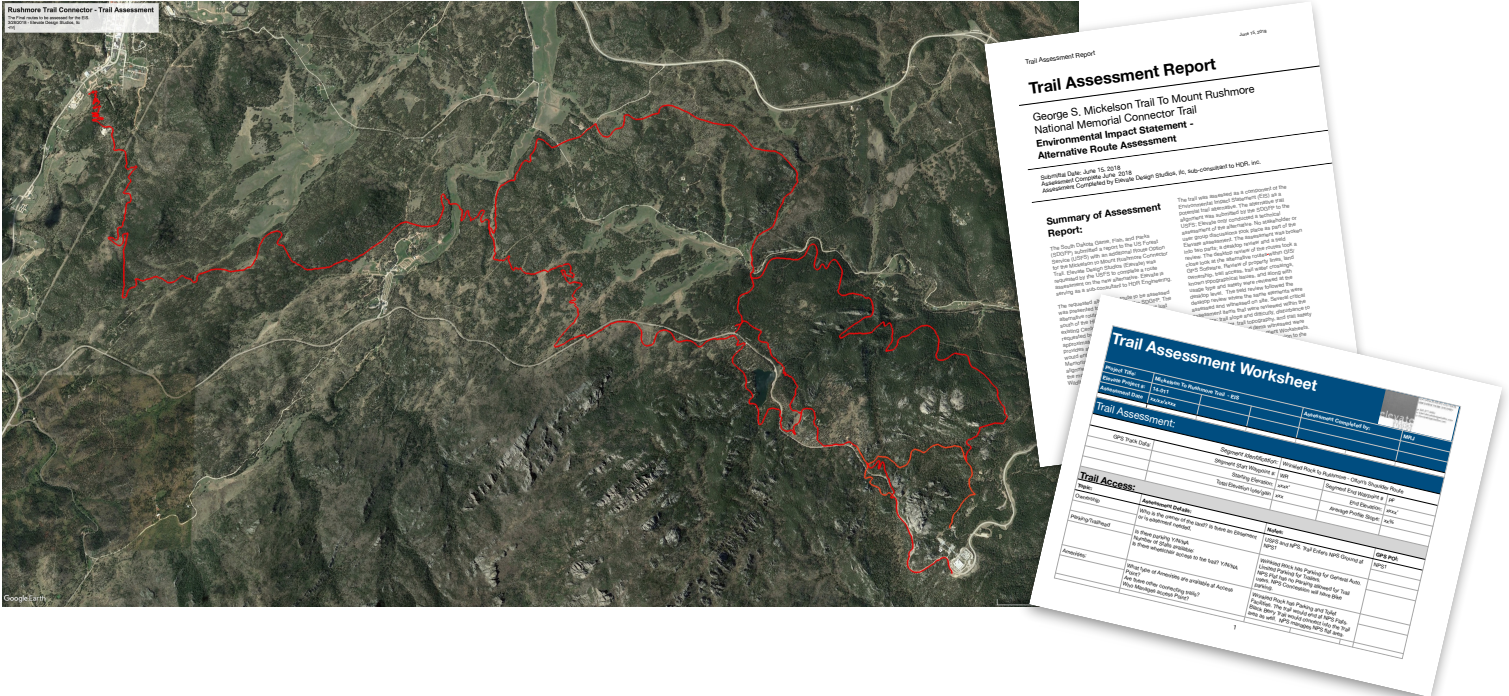


Rushmore to Mickelson Trail EIS - Trail Assessment Black Hills, SD



As part of the Environmental Impact Statement (EIS) Team, Elevate Design Studios played a critical role in the review, and assessment of potential alternative routes leading from Hill City, SD to Mount Rushmore National Memorial. We were able to assess over 32 miles of potential trail alternatives within the EIS process.

Working closely with National Park Service (NPS), the United State Forest Service (USFS), and the South Dakota Game Fish and Parks (SDGFP) we were able to provide a clear and concise direction for all of the suggested trail alternative routes. Providing a desktop view using GIS software along with providing on site field assessments using GIS/GPS software and technology we were able to narrow down the suggested trail alternatives. Our assessment reports were then presented to the NPS and USFS to provide direction and additional studies required for the EIS. Our assessment desktop review, field assessment, and assessment reports allowed our clients to make the decision to move forward with the most feasible trail route option.

The trail alternatives assessed included a wide variety of types of trails from; concrete trail systems, to trail boardwalks, to crushed stone trails.

Key Elements:

- ▶ Provided assessment and routing options on over 32 miles of potential trails within the Black Hills National Forest.
- ▶ Access to the Trail System and Mount Rushmore National Memorial.
- ▶ Assessed user group safety and experiences
- ▶ Protection of the existing various protected lands within the Black Hills National Forest Area.

Budget: NA

Completed: In Progress

Reference: Black Hills, South Dakota