



**TAGUS**



GILA



TIMES



PO



**ERGENE**

---



SEN



AMAZON



TONGO





RENNES



COLORADO



LENA



KALIMA



IGUAZU



ZAIRE



OBI



MAMAS



# PANORAMİK KABİNLER

*Yan paneller : Paslanmaz, laminant, dekoratif renkli cam gibi seçeneklerle zenginleştirilir. Kapı pervazları ve köşeler özel bükümlüdür.*

*Tavan : Projeye göre lazer kesim, paslanmaz spotlu, kristal veya müşteri isteğine göre özel uygulama yapılmaktadır.*

*Taban : Tek parça veya parçalı granit, buzlu cam, laminant parke seçenekleriyle tamamlanır.*

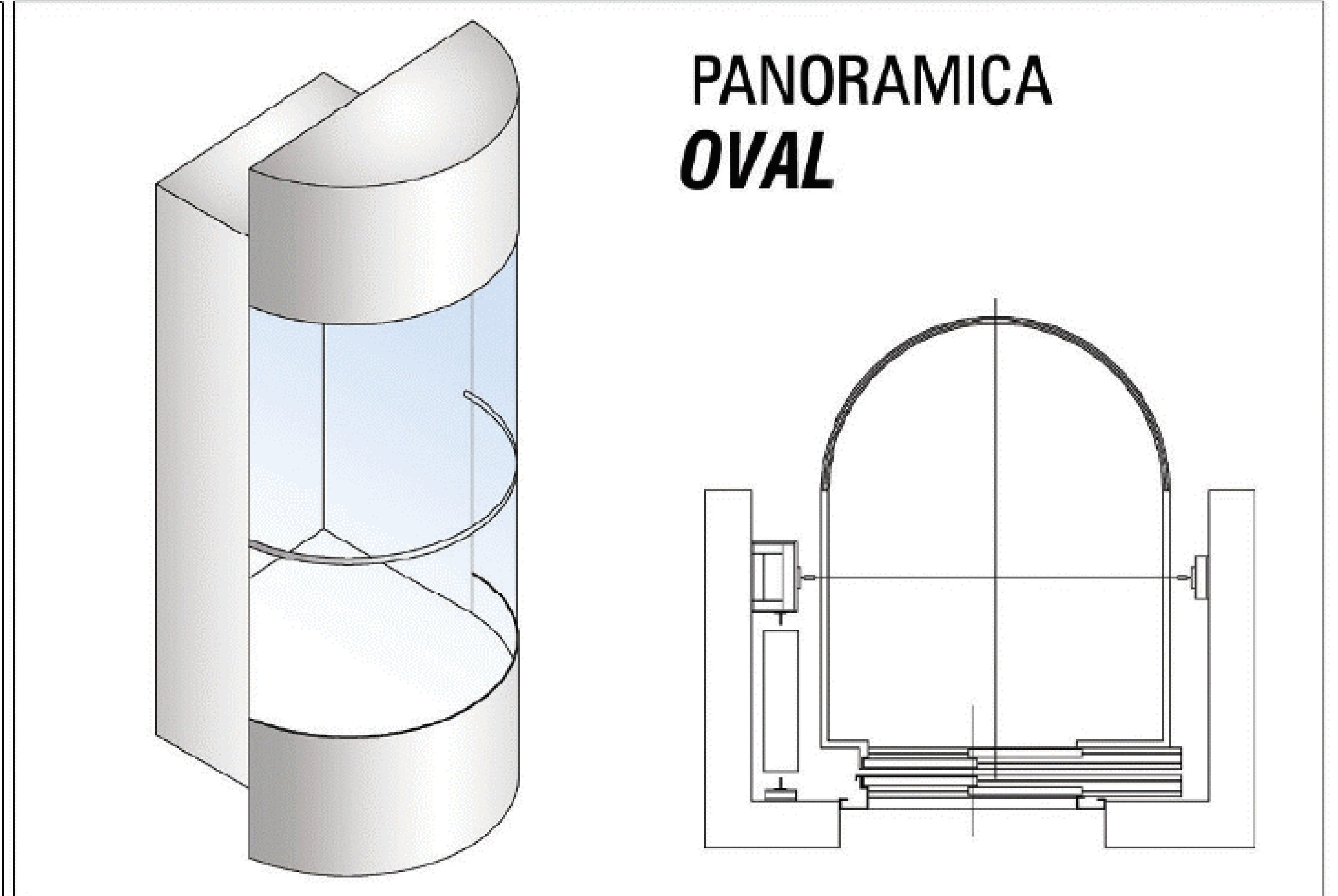
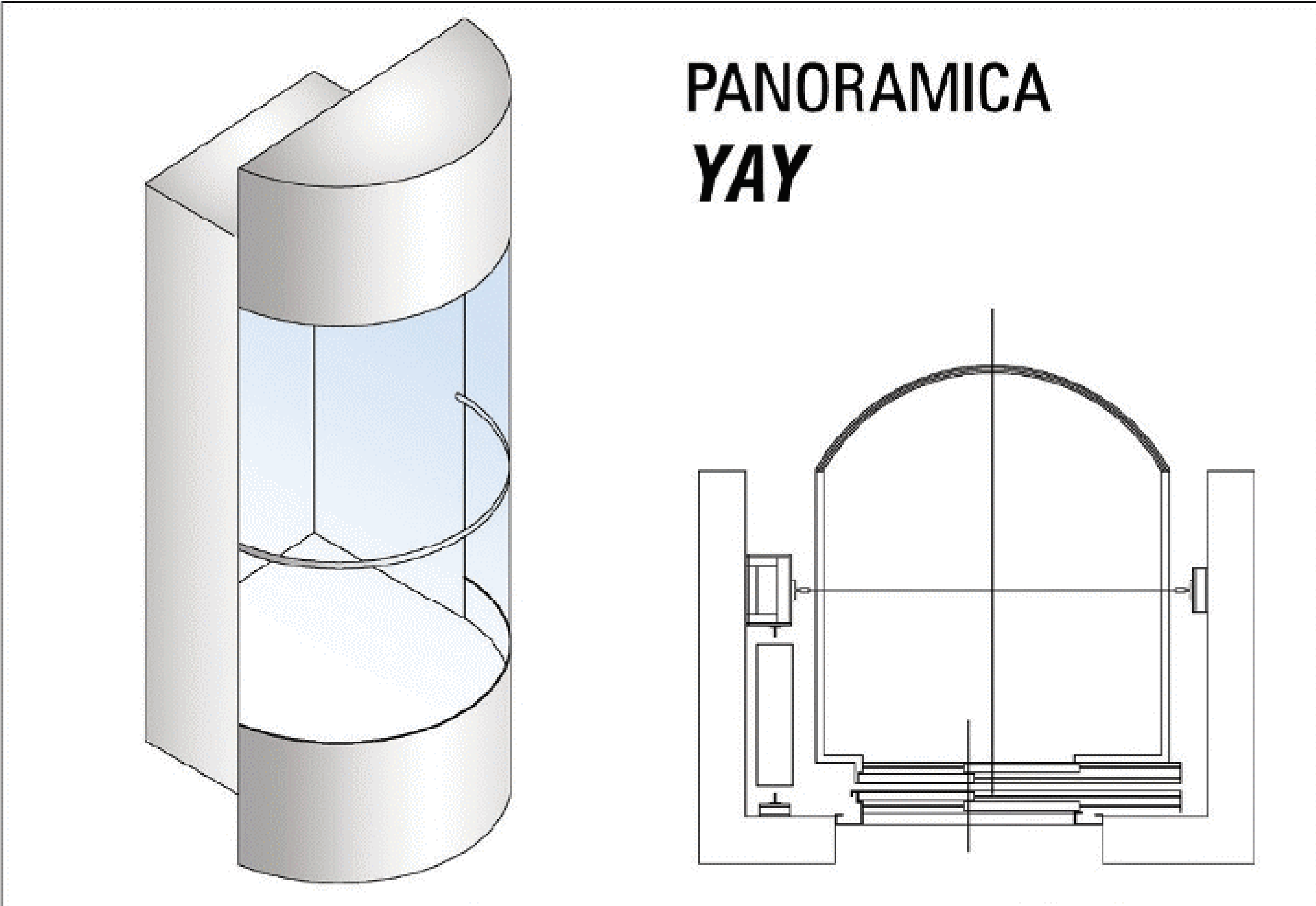
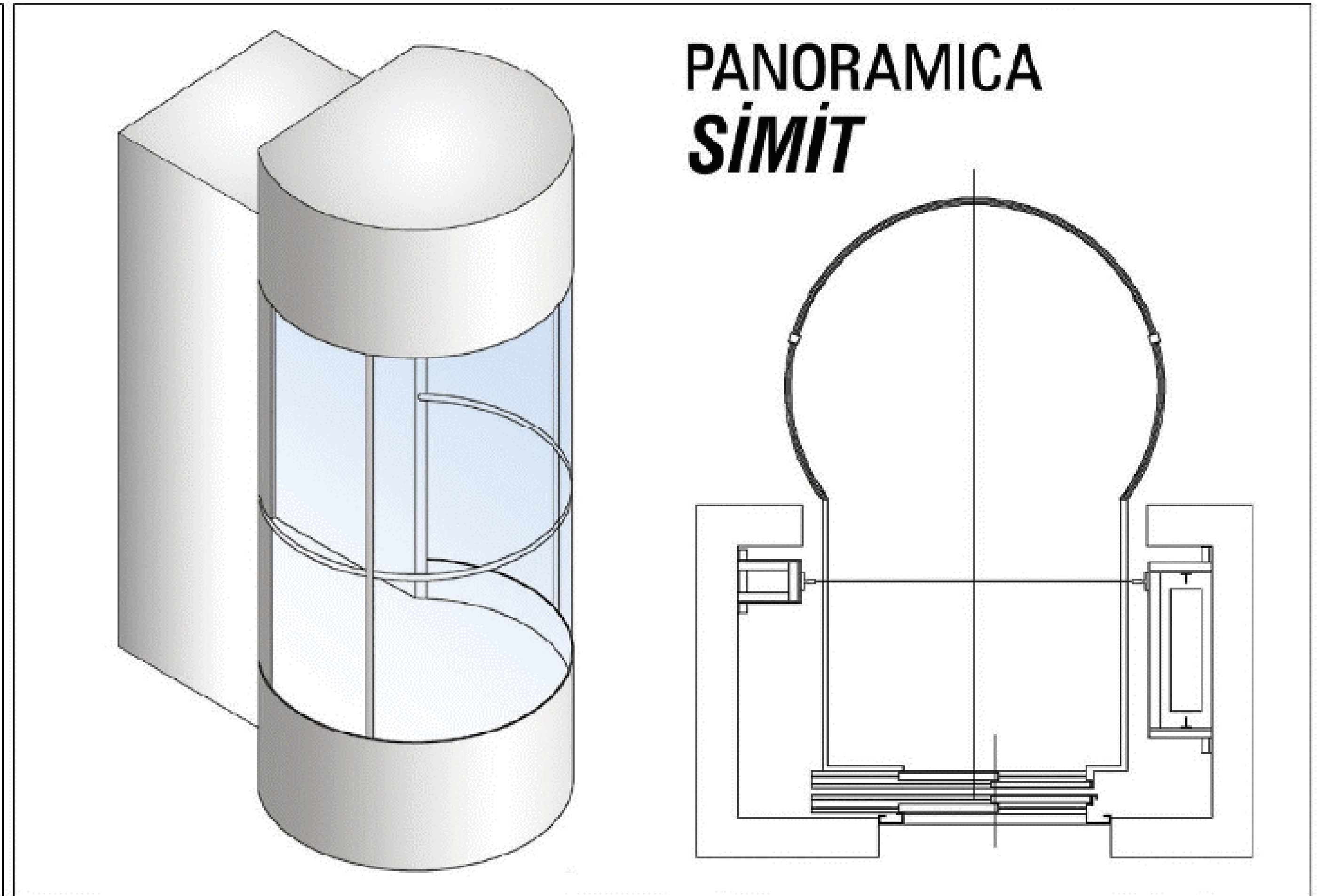
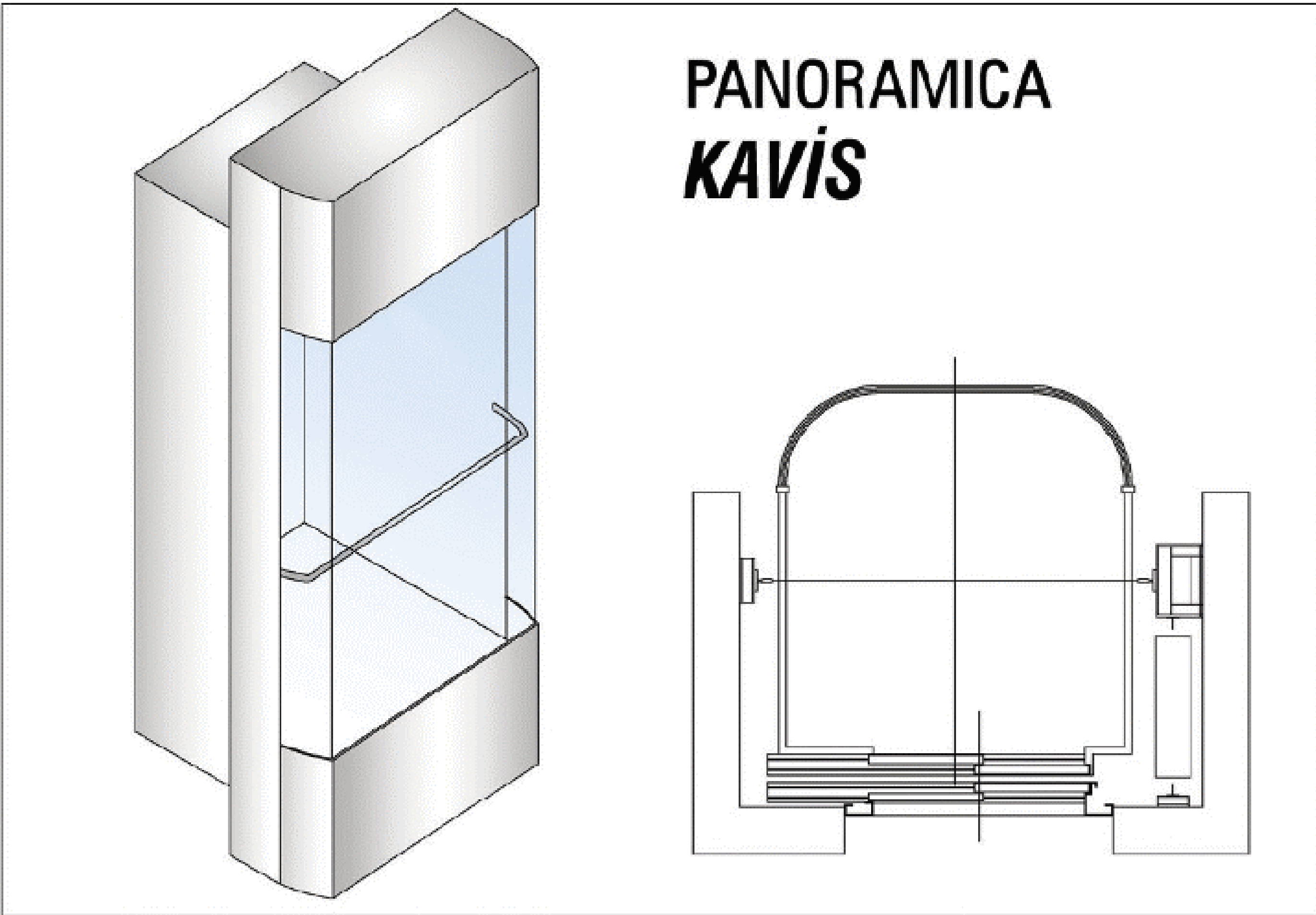
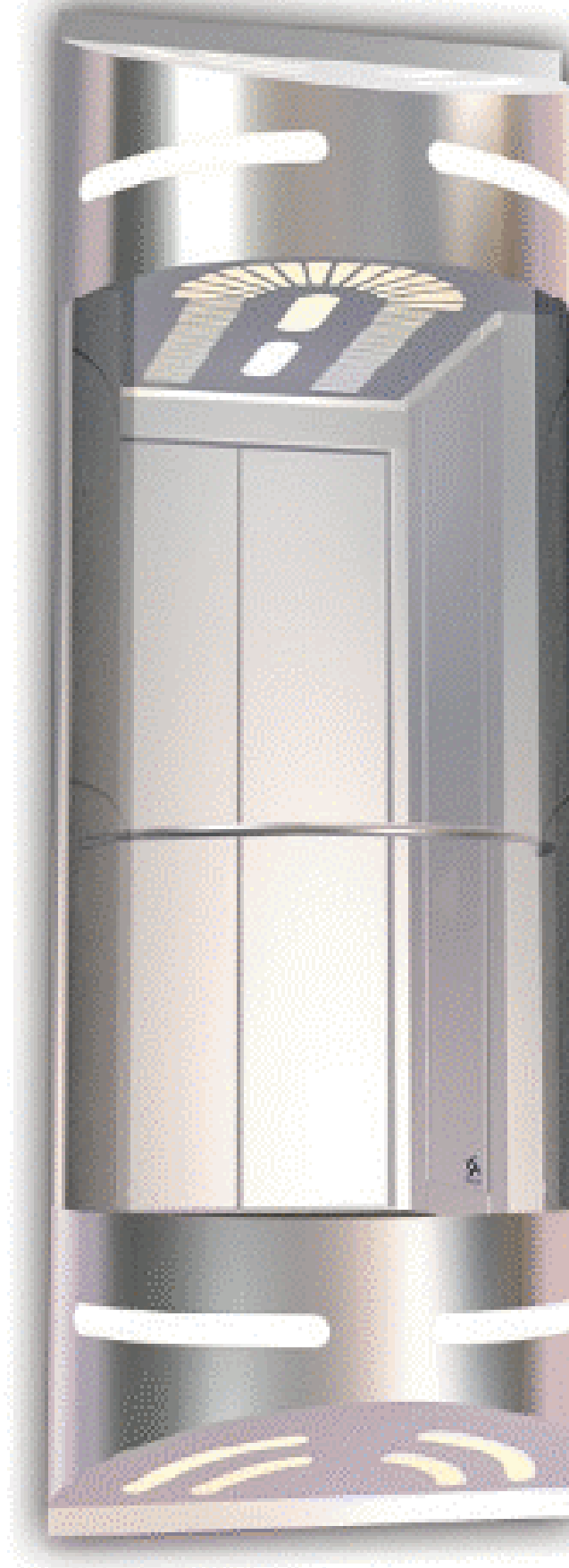
*Camlar : 6+6 Lamine edilmiş natural cam standarttır. Temperli Cam, Reflekte Cam seçenekleri istek üzerine kullanılabilir.*

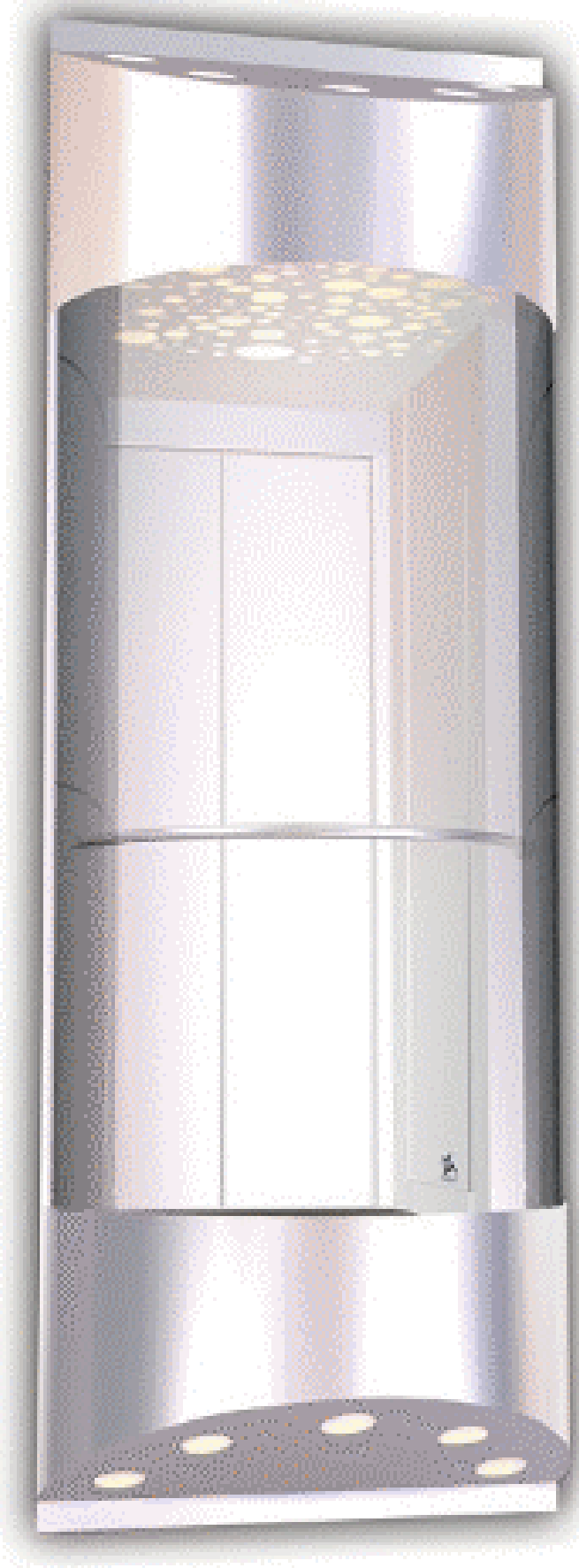
*Küpeşte : Projeye göre silindirik veya köşe bükümlü, çok nokta destekli paslanmaz. Tekli, Çift veya üçlü sıra halinde yerleştirilir. (ø30mm)*

*Dıştan Görünüm : İsteğe göre ışıklandırma, dekoratif aydınlatma. Projede kabin dışından görünen istenmeyen yüzeyler paslanmaz ile kaplanabilir.*

*Davlumbazlar : Projeye Panoramica 1-8 'den istenilen bir davlumbaz kullanılabilir. Projenize en uygun davlumbaz seçeneği için lütfen irtibata geçiniz.*

*Panoramikte uzman teknik kadromuz, geniş makine parkurumuz emrinizdedir. Lütfen, panoramik asansör projelendirmesinde teknik servisle irtibata geçiniz.*





# PANORAMIC CABINS

*Side panels: St.Steel, laminate, colored decorative glass. The door cornices and cabin corners are rich twisted stainless.*

*Ceiling: According to the project; laser cutting, stainless spot, crystal ceiling or special application could be made according to the request.*

*Floor: Single or parted granite, icy glass, parquet.*

*Glass: 6+6 Laminated natural glass is standard. Tempered, reflected glass can be applied on request.*

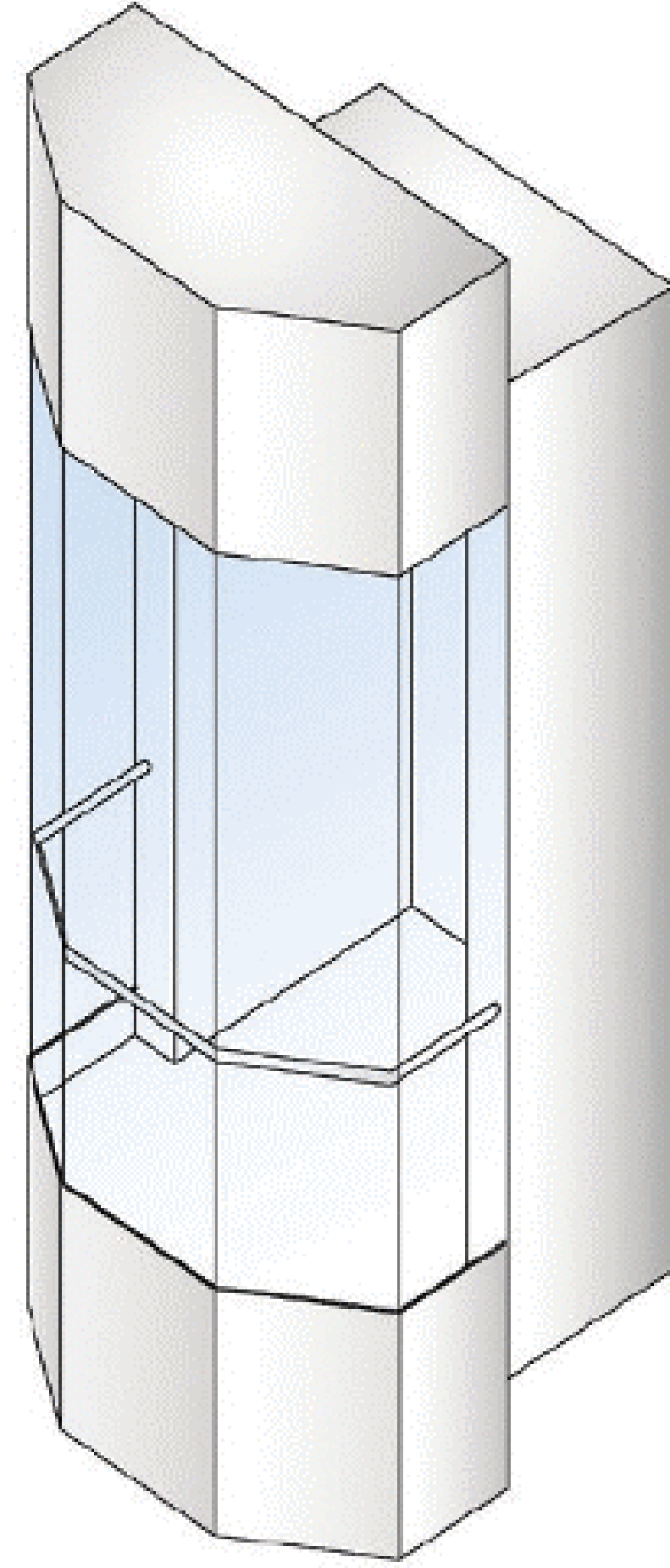
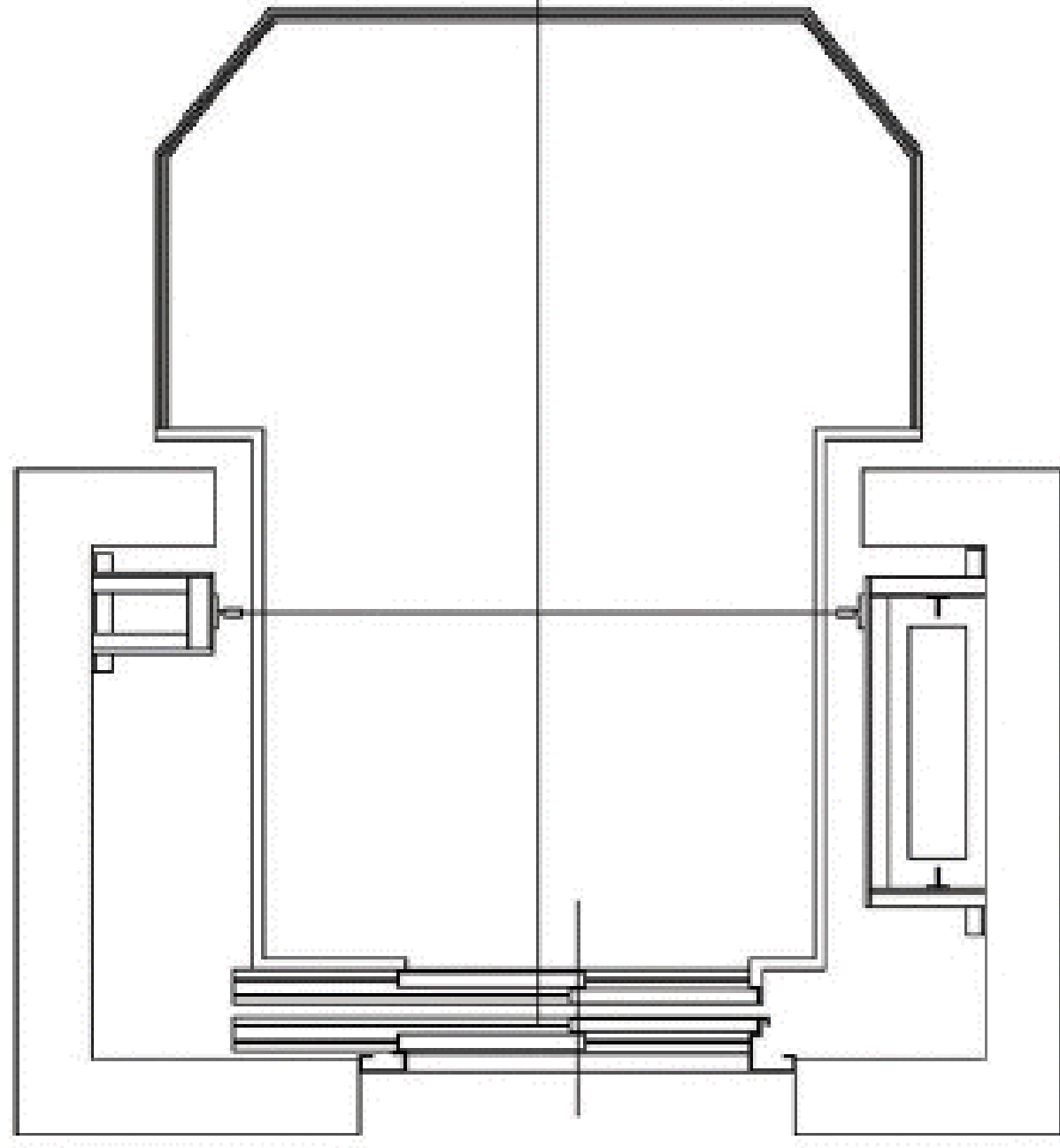
*Handrail: According to the Project, cylindrically or corner twisted, multi point supported stainless. Single, twin or triplet. (ø30mm)*

*External Appearance : Enlightening, decorative illumination according to the request. The surfaces not wanted to be seen externally in the project can be covered stainless.*

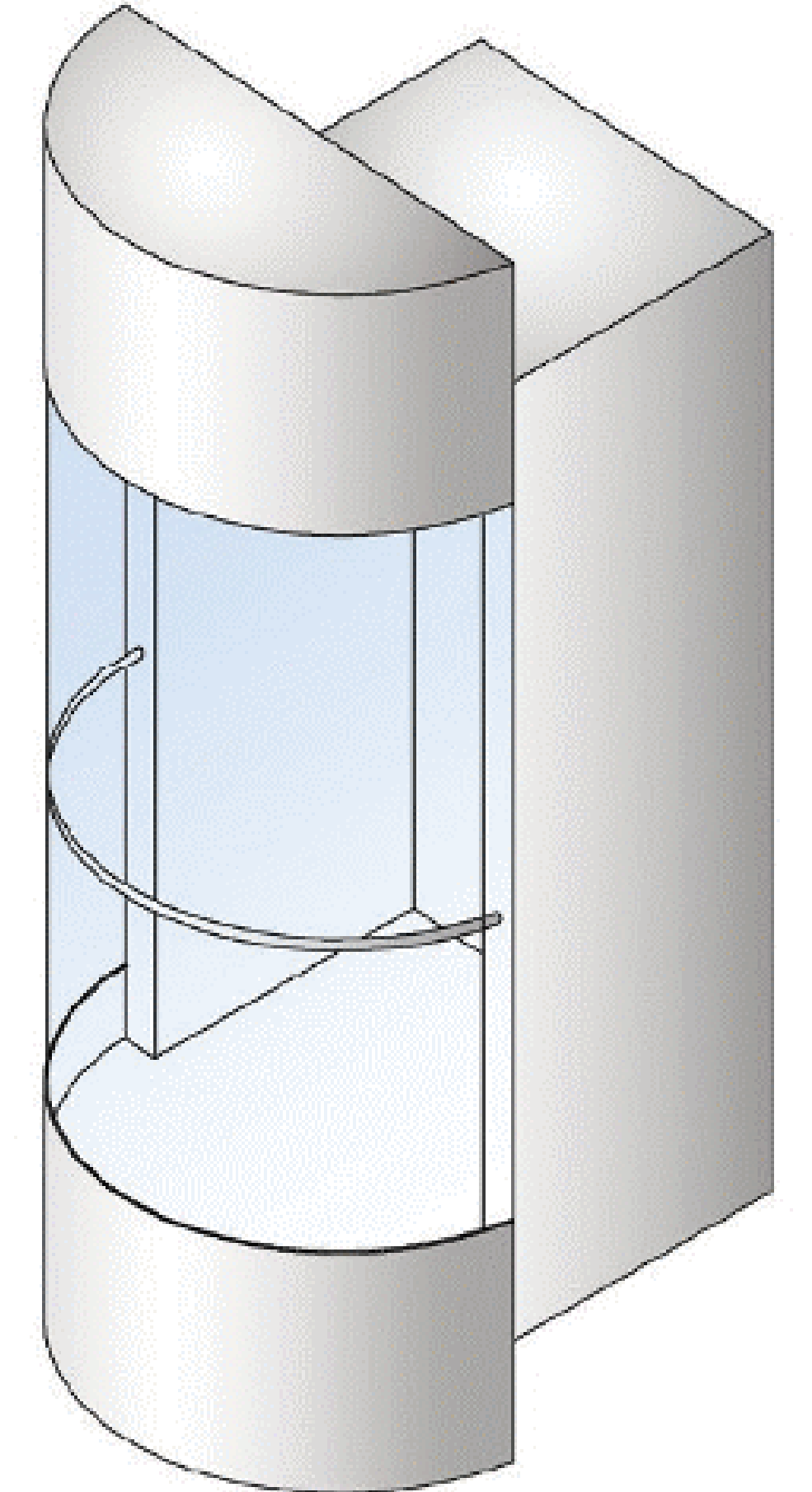
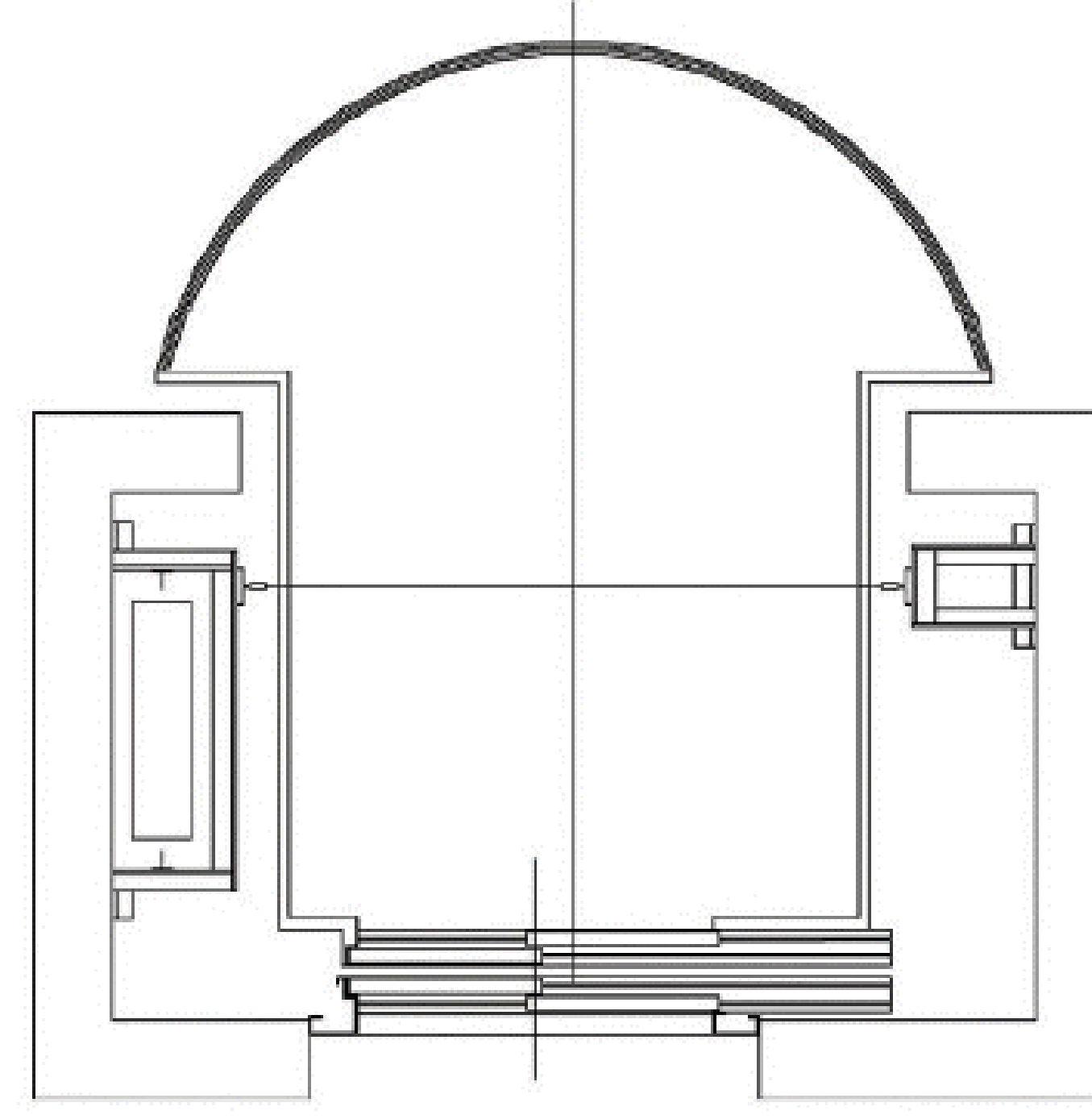
*Domes : Please get in contact for the best dome for your project*

*For panoramic, our expert staff and technological machine park are at your service. Please contact with our technical service for your panoramic projects .*

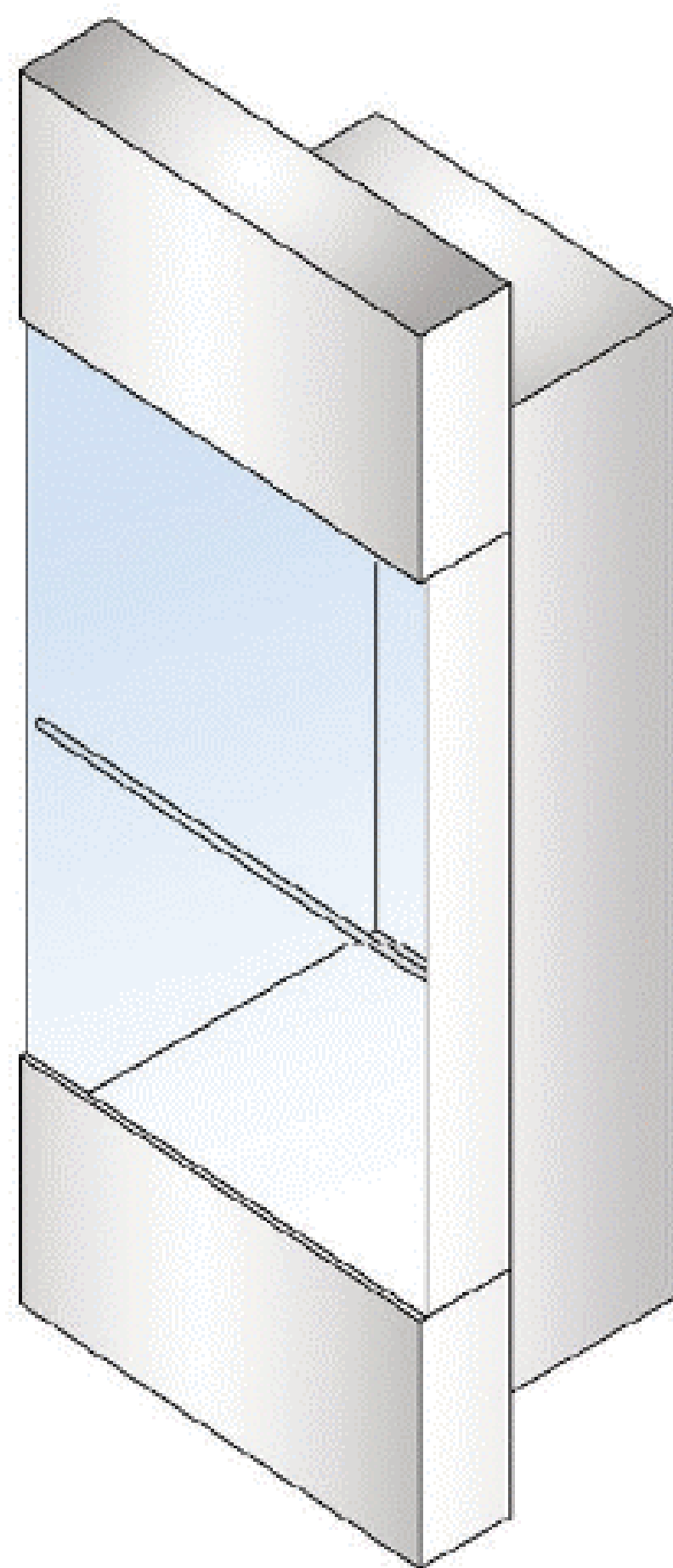
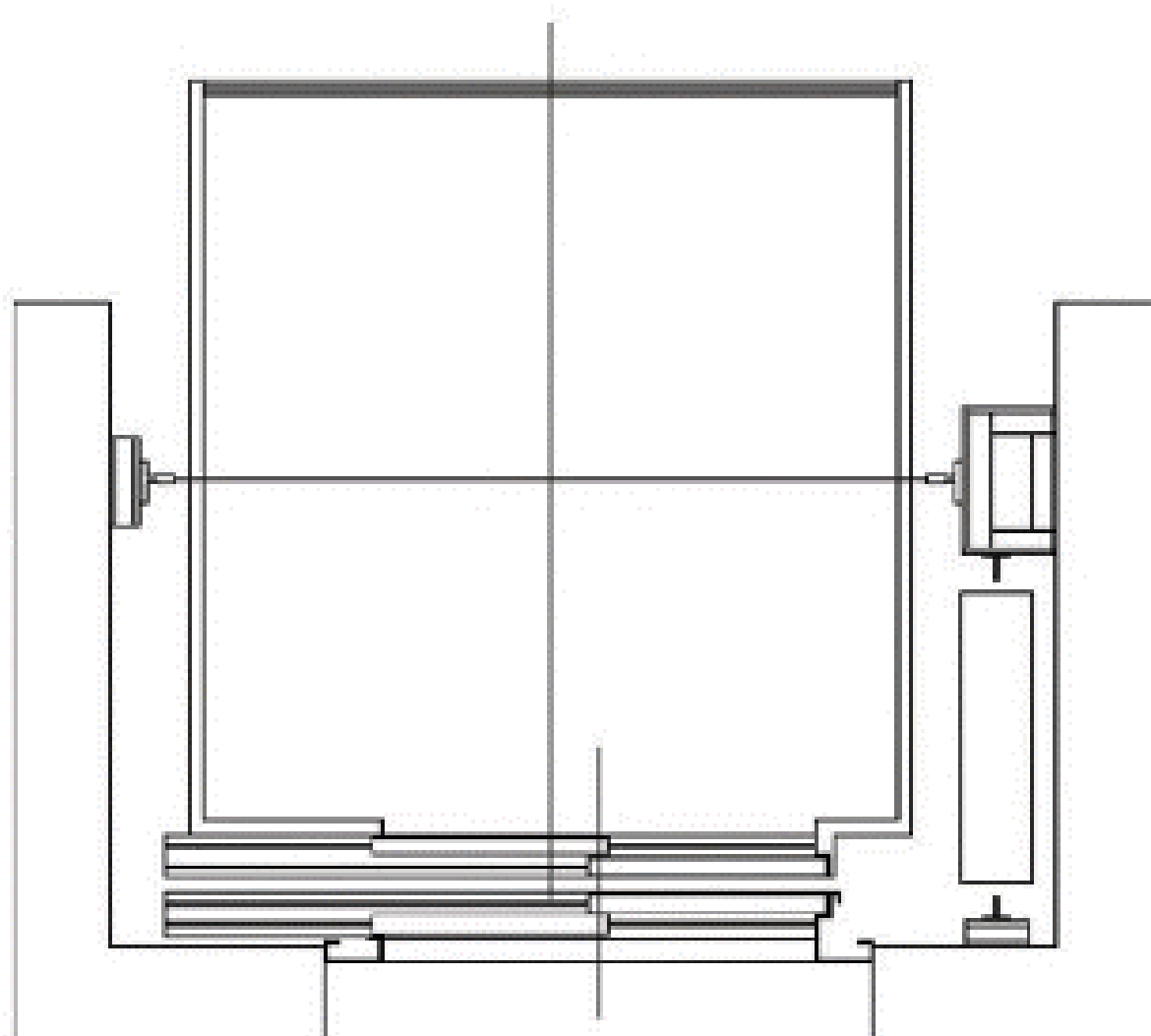
## PANORAMICA KÖŞELİ MANTAR



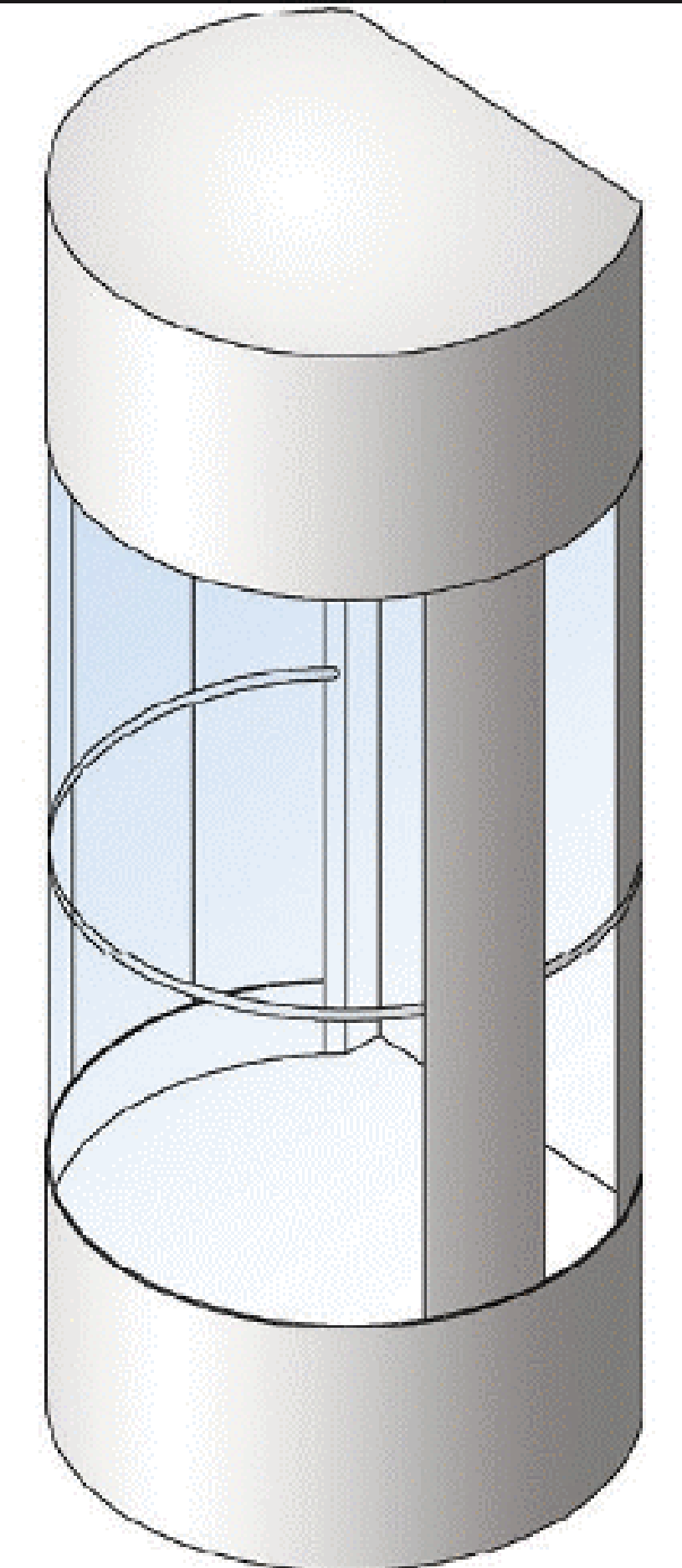
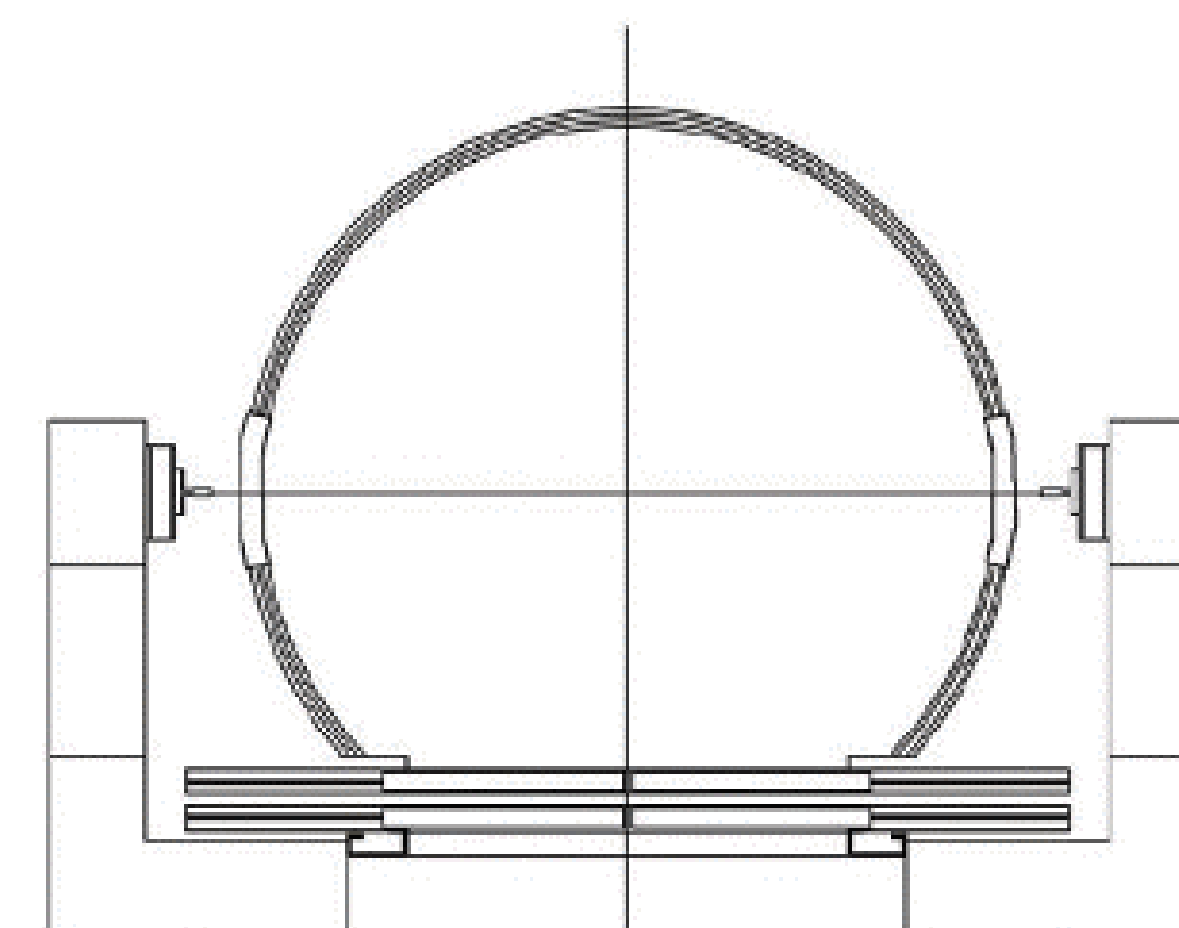
## PANORAMICA MANTAR



## PANORAMICA KÖŞE



## PANORAMICA AY





## PANORAMICA I

<b>Kubbeler :</b> Domes :	<i>Özel aydınlatmalı lazer kesimli satine paslanmaz.</i> <i>Special lighting laser cutted brushed st. steel.</i>
<b>Yan Duvarlar :</b> Walls :	<i>Desenli Paslanmaz (Panel Tip).</i> <i>Figured st. steel (Panel type).</i>
<b>Cam :</b> Glass :	<i>6+6 Lamine, Natural veya Reflekte.</i> <i>6+6 Laminated, Natural or reflective.</i>
<b>Küpeste :</b> Handrail :	<i>Cam ebadında çepeçevre özel bükümlü paslanmaz.</i> <i>Special bended glass sized stainless.</i>
<b>Tavan :</b> Ceiling :	<i>Özel tasarım lazer tavan.</i> <i>Special designed laser ceiling.</i>
<b>Taban :</b> Floor :	<i>Tek parça doğal granit.</i> <i>Single part natural granite.</i>



## PANORAMICA II

**Kubbeler :** *Kavis bükümlü satine paslanmaz.*  
**Domes :** *Curve bended brushed st. steel.*

**Yan Duvarlar :** *Doğal ahşap (panel tip).*  
**Walls :** *Natural wooden (panel type).*

**Cam :** *6+6 Lamine, Natural veya Reflekte.*  
**Glass :** *6+6 Laminated, Natural or reflective.*

**Küpeste :** *3 sıra Q2 Paslanmaz.*  
**Handrail :** *Triplet Q2 Staninless.*

**Tavan :** *Özel tasarım lazer tavan*  
**Ceiling :** *Special designed laser ceiling*

**Taban :** *Tek parça doğal granit.*  
**Floor :** *Single part natural granite.*



## SERVIS KABINI

- Kabin büyüklüğü ve taşıma kapasitesine göre direkt paslanmaz veya paslanmaz kaplama olarak imal edilir.
- Karkasındaki özel alüminyum paten ile faydasız statik ağırlıkta azalma sağlanmıştır.
- İsteğe ve boyuta göre raf sayısı ve ışıklandırma sağlanır.

## GIYOTIN KABIN

- Kullanım hatalarına karşı, alt ve üst ayarlı tampon vidaları ile şiddetli açma kapama sırasında kapının zarar görmesi engellenir.
- Özel ray ve yataklama sistemi ile tüy hafifliğinde açma-kapama; raylamada kullanılan özel poliüretan malzemeyle aşınmaya karşı çok yüksek direnç ve uzun ömür sağlanır.
- Kabin katta değilken manual dışardan açma sistemiyle; zemin kat ve kuyu boşluğu temizlenmesi kolaylaştırılmıştır.
- Çift emniyet sistemi ile ve stoper kullanılmıştır. Kolda tam büküm ve gizli puntolama ile tam estetik emniyet sağlanır.

## GIYOTIN KABIN

- Damage to door is prevented during hard opening-closing with lower and upper adjusted tampon screws against usage mistakes.
- Quite slight opening-closing with special rail and bedding system; very high resistance and long life is provided against abrasion through special polyurethane material used in railing.
- Cleaning of ground floor and well cavity is facilitated with manual external opening system when the cabin is not in the floor.
- Double security system and stopper were used. Complete aesthetic and security are provided with full bending in the handle and hidden pointing.

- It is manufactured as direct stainless or stainless covering according to the cabin size and carrying capacity.
- Useless static weight is reduced with special aluminium paten in its carcass.
- Shelf quantity and illumination according to the demand and size.





## YÜK CARGO

Yan Duvarlar : Walls :	Elektrostatik boyalı Electrostatic powder painted.
Arka Duvar : Rear Wall :	İstek ve boyuta göre ayna. Mirror according to request and size.
Küpeşte : Handrail :	Ahşap Wezalit koruma bantı. Wooden defence buffer .
Köşeler : Corners :	Elektrostatik boyalı. Electrostatic powder painted.
Tavan : Ceiling :	E.statik boyalı büyük Spot Tavan. Powder painted big spot ceiling.
Işıklandırma : Lightening :	Tavanda özel yük spotu ile. From celing with special cargo spot.
Taban : Floor :	Çetralı alüminyum. Figured aluminium.

## SEDYE HOSPITAL

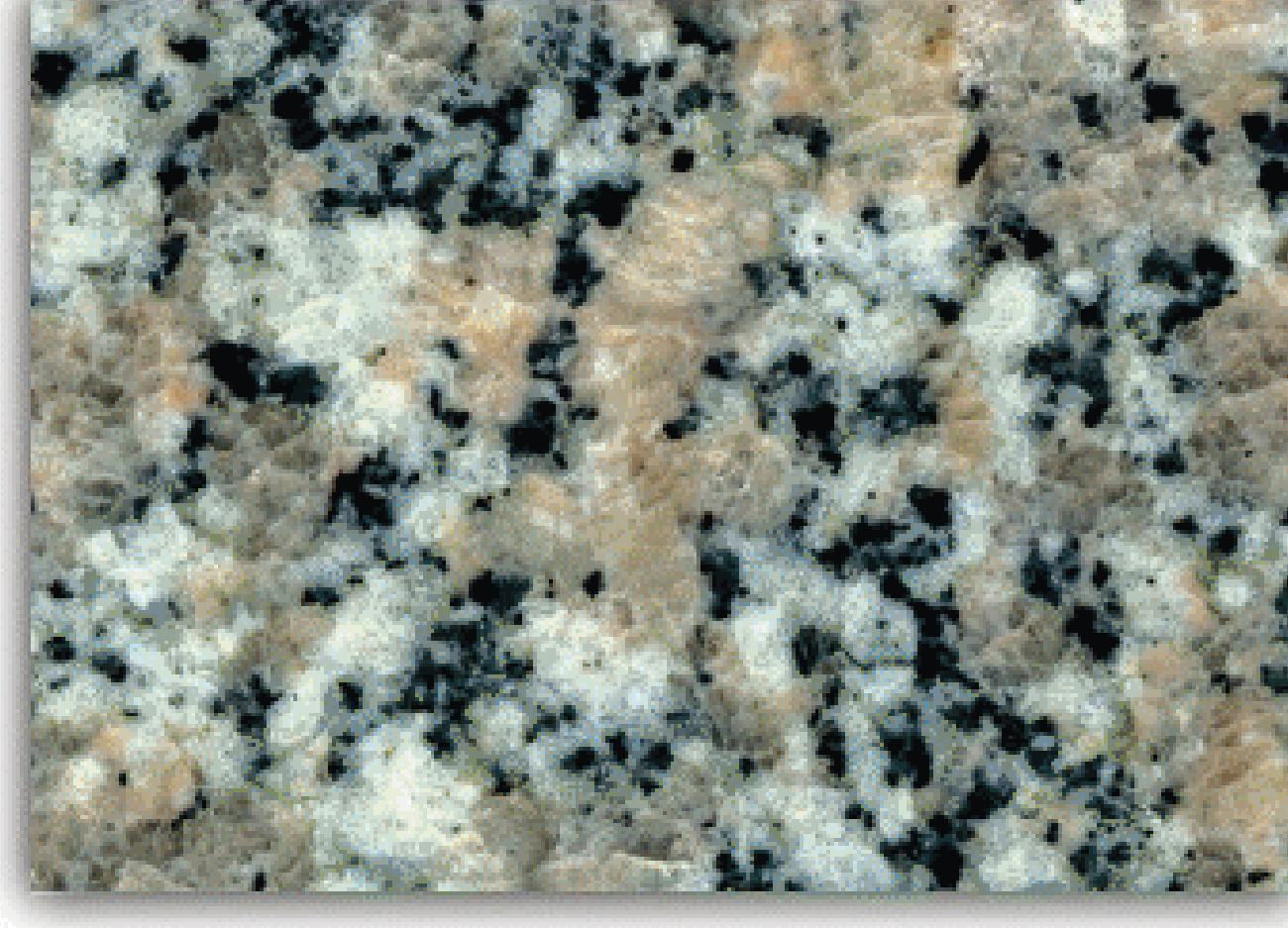
Yan Duvarlar : Walls :	Paslanmaz.(Panel tip) Stainless.(Panel type)
Arka Duvar : Rear Wall :	İsteğe göre ayna. Mirror on request.
Küpeşte : Handrail :	Paslanmaz koruma bantı. Stainless steel defence buffer.
Köşeler : Corners :	90° Özel bükümlü (Paslanmaz) 90° Special bended (St.Steel)
Tavan : Ceiling :	Paslanmaz Çatı Tavan. St.Steel Roof Ceiling with honey comb.
Işıklandırma : Lightening :	Tavanda endirekt, petek ile. From the ceiling with honey comb..
Taban : Floor :	Antibakteriyel PVC veya granit. Antibacterial PVC or granite.



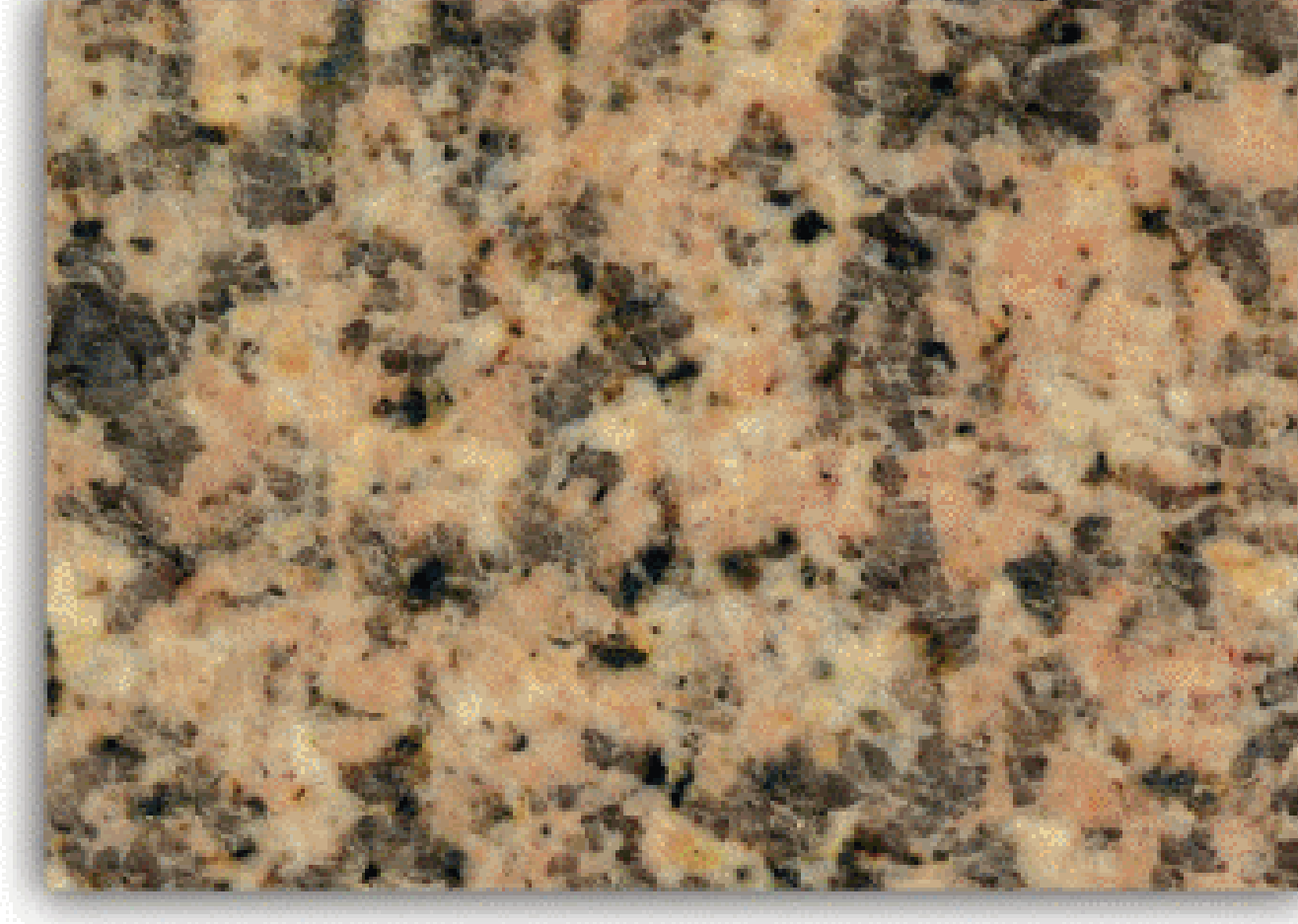
Taban Kaplama Seçenekleri /  
Ground covering options



*Santiago Red*



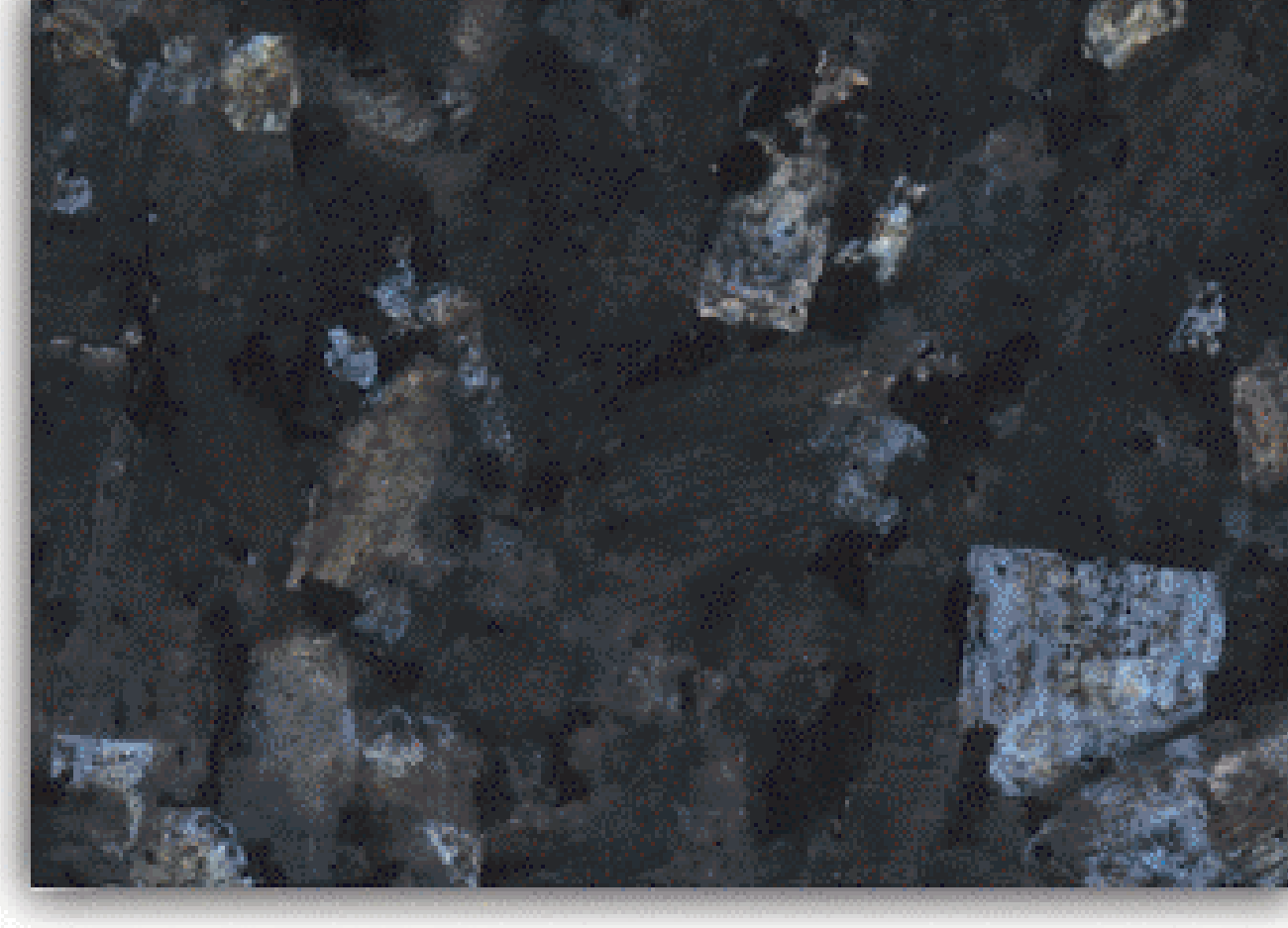
*Bianco Sardo*



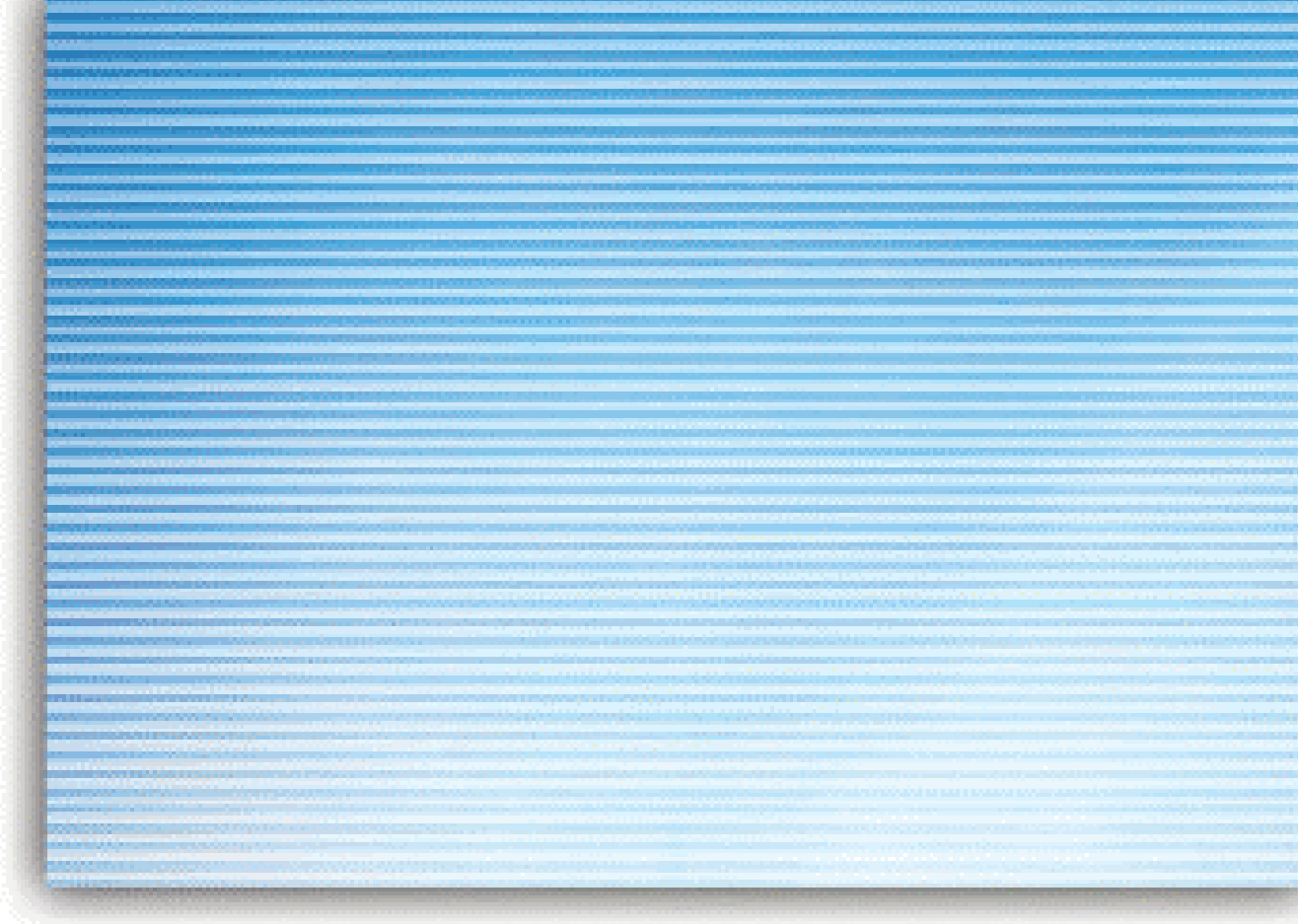
*Rosa Porino*



*Absolute Black*



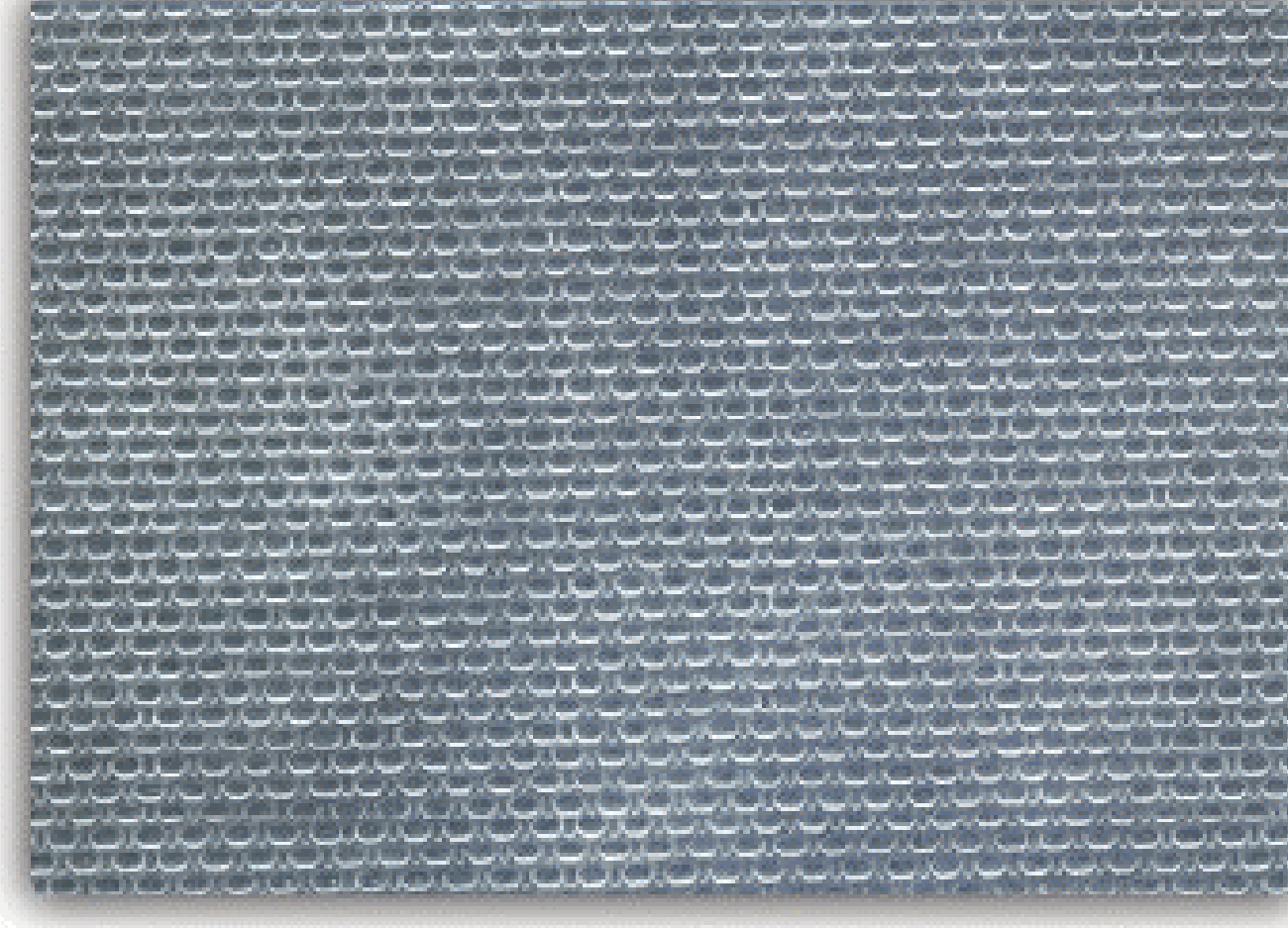
*Blue Pearl*



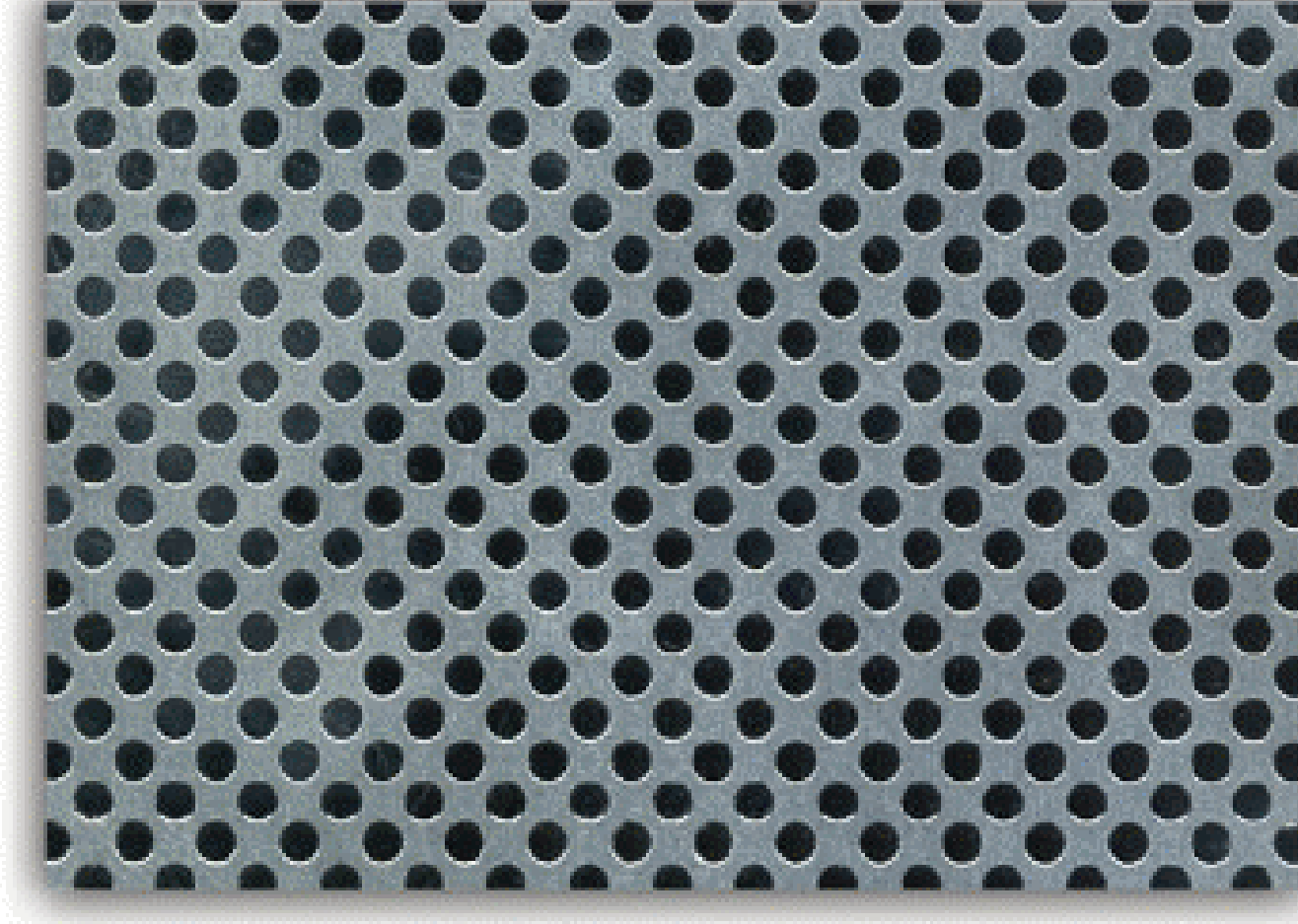
Paslanmaz Seçenekleri / Stainless options



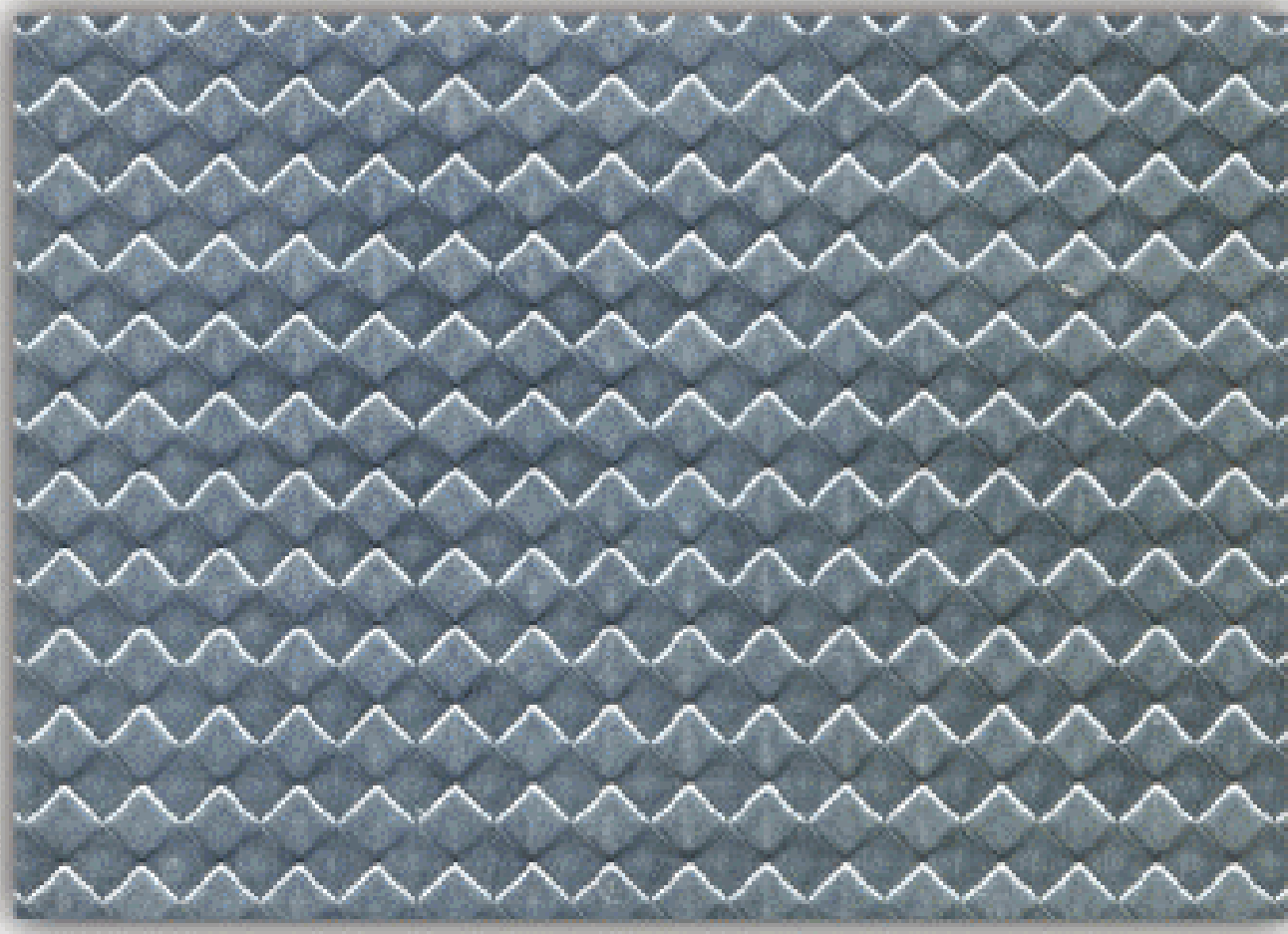
*Deri / Leather*



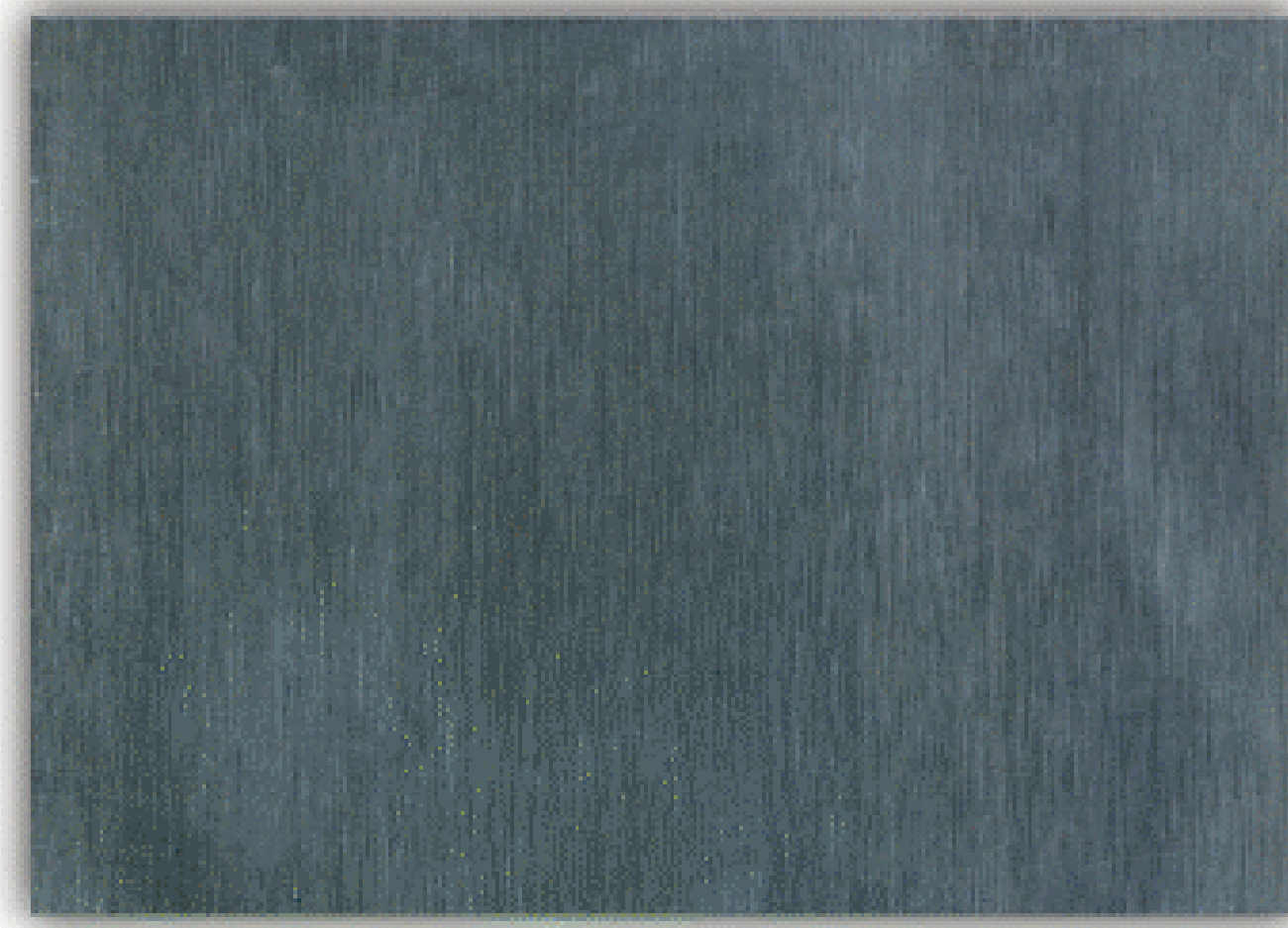
*Nokta / Dot*



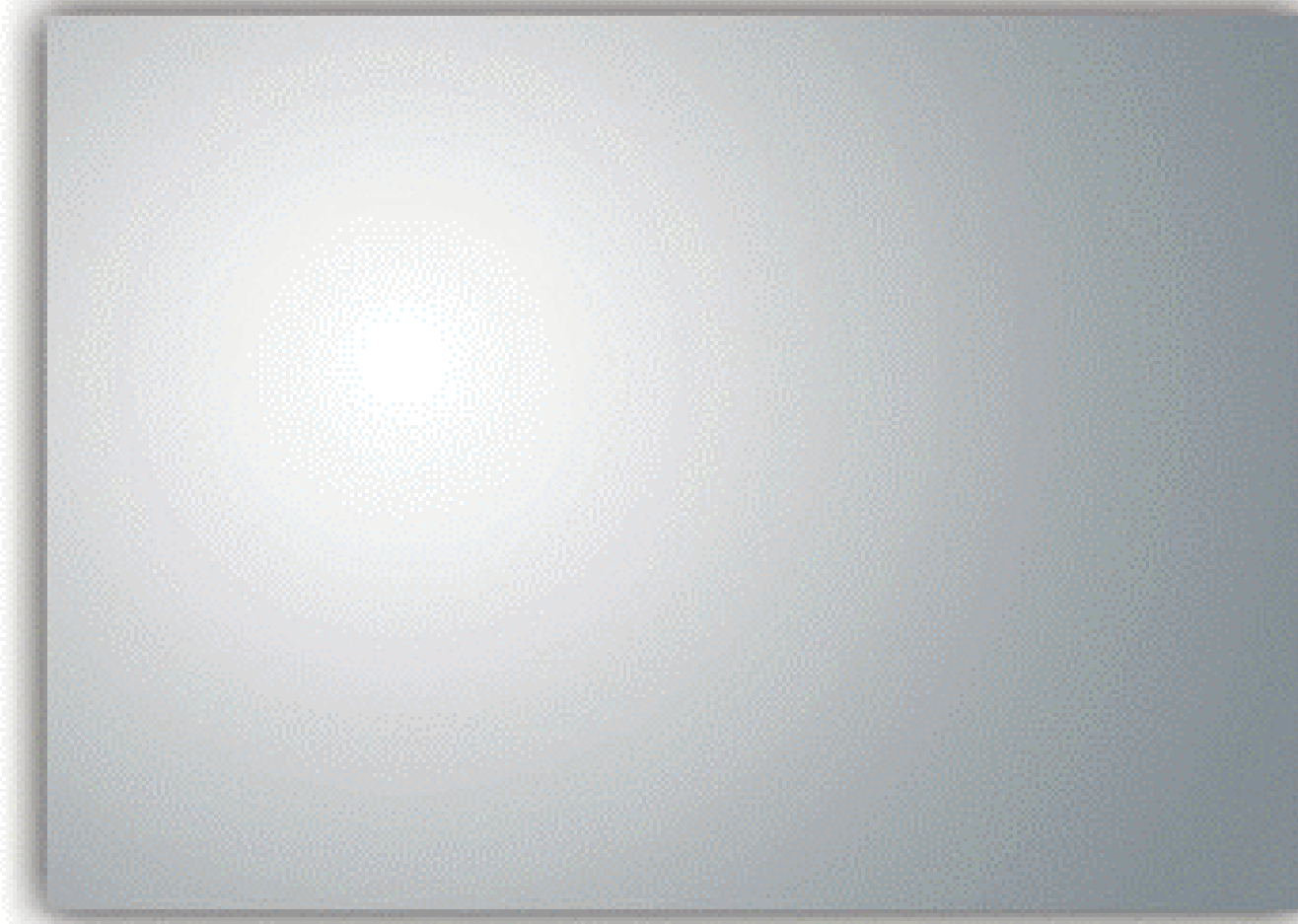
*Lüks Nokta / Lux dot*



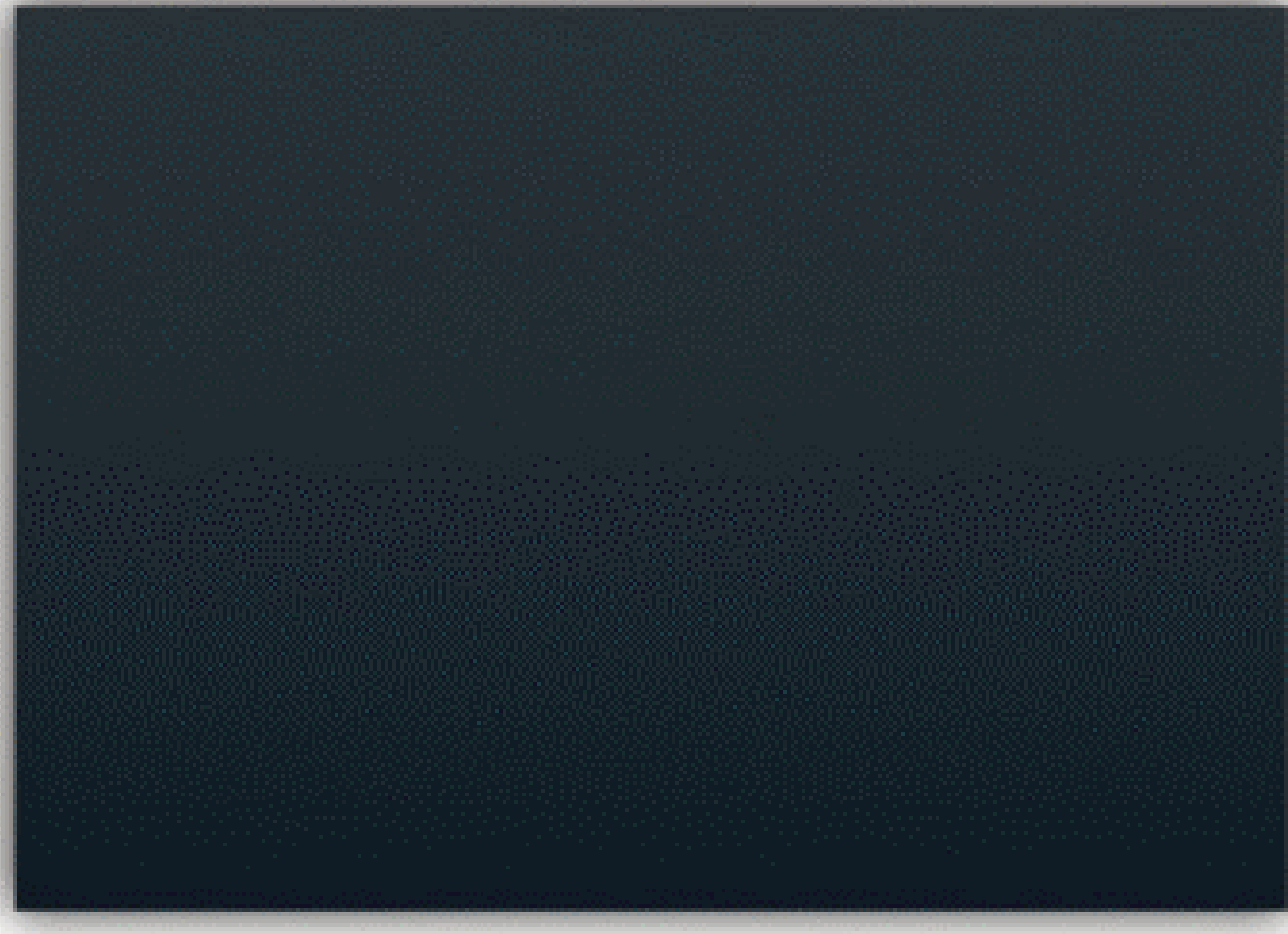
*Baklava / Cross Square*



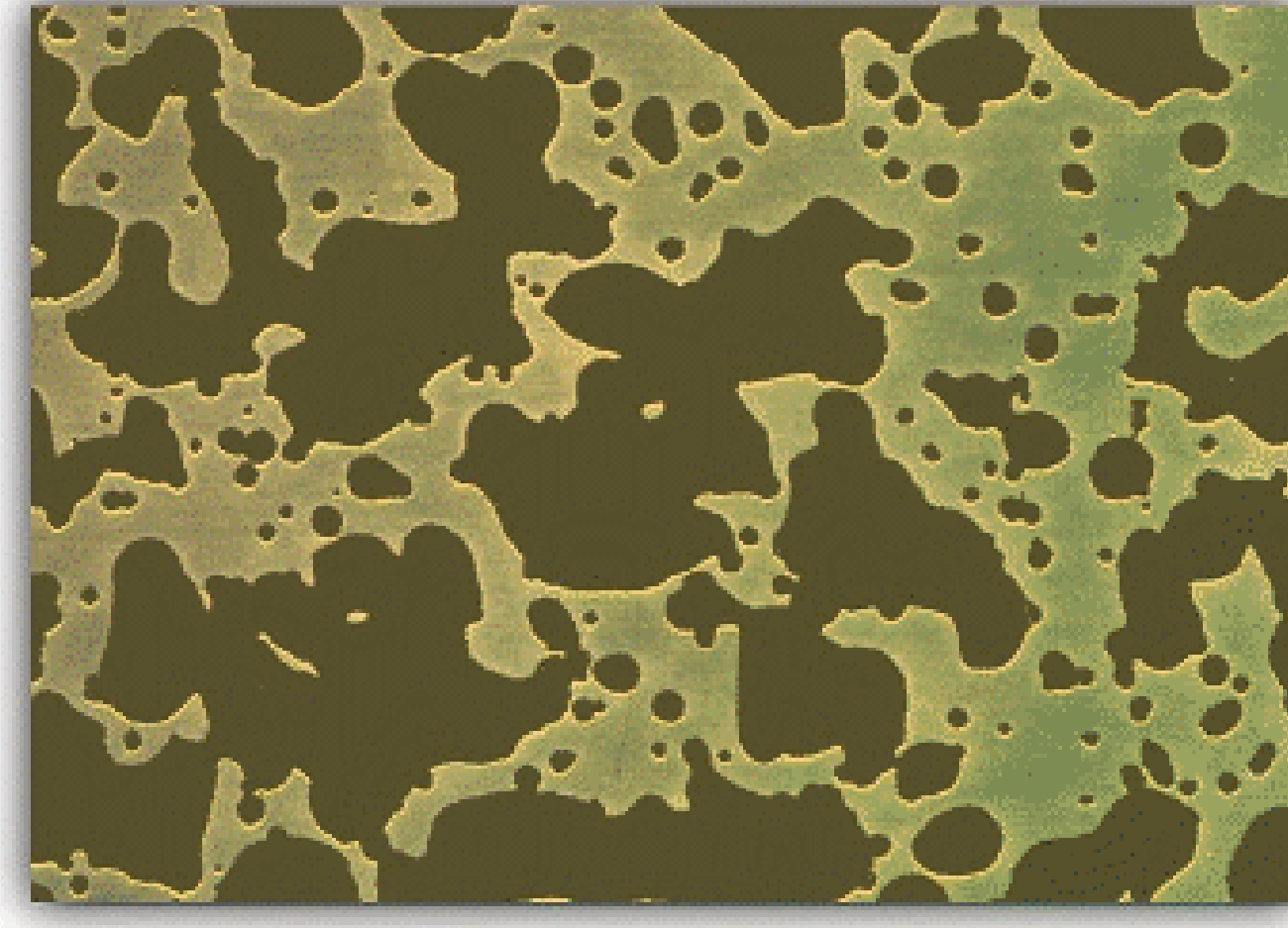
*Satine / Hairline st.st*



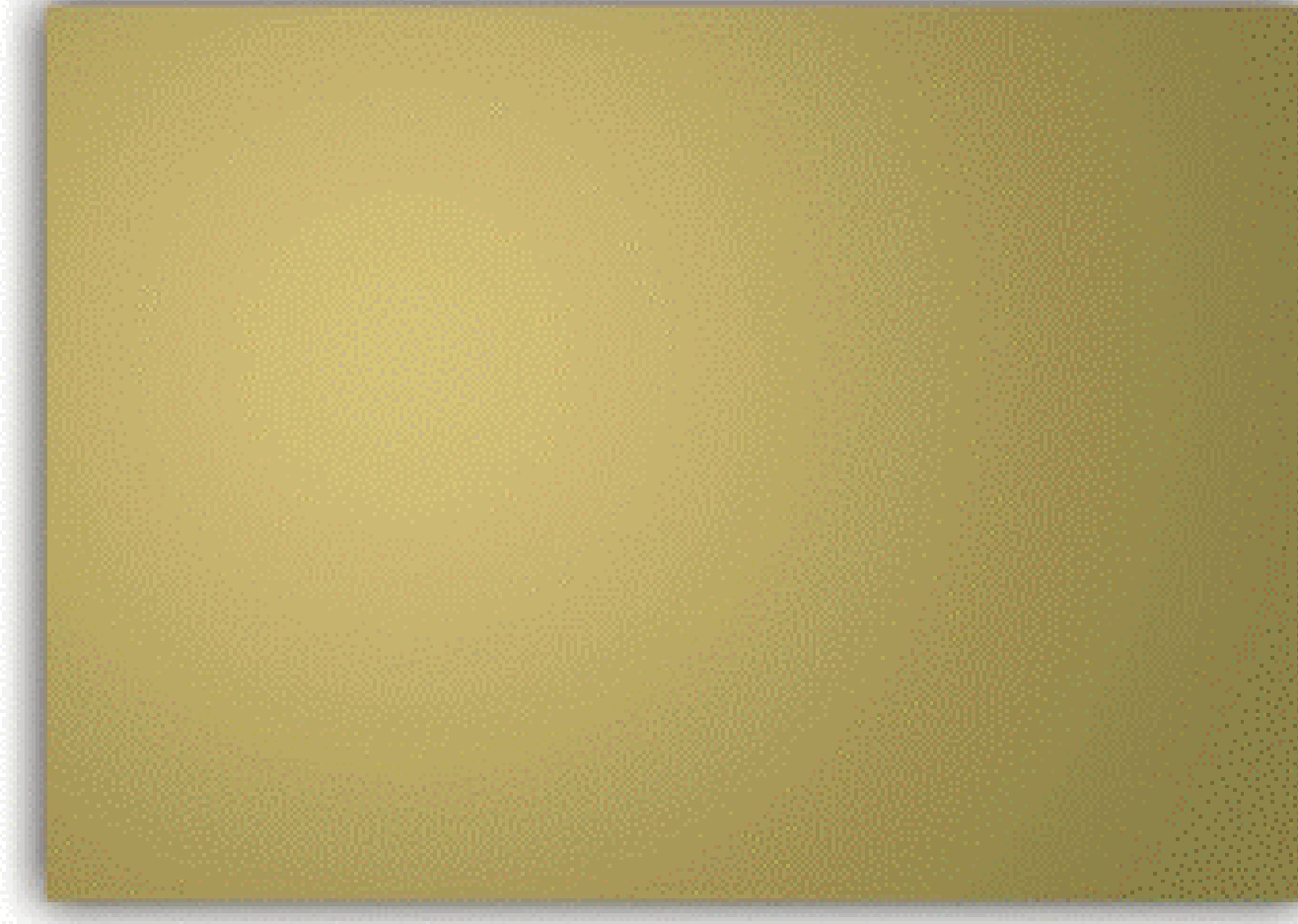
*Ayna / Mirror*



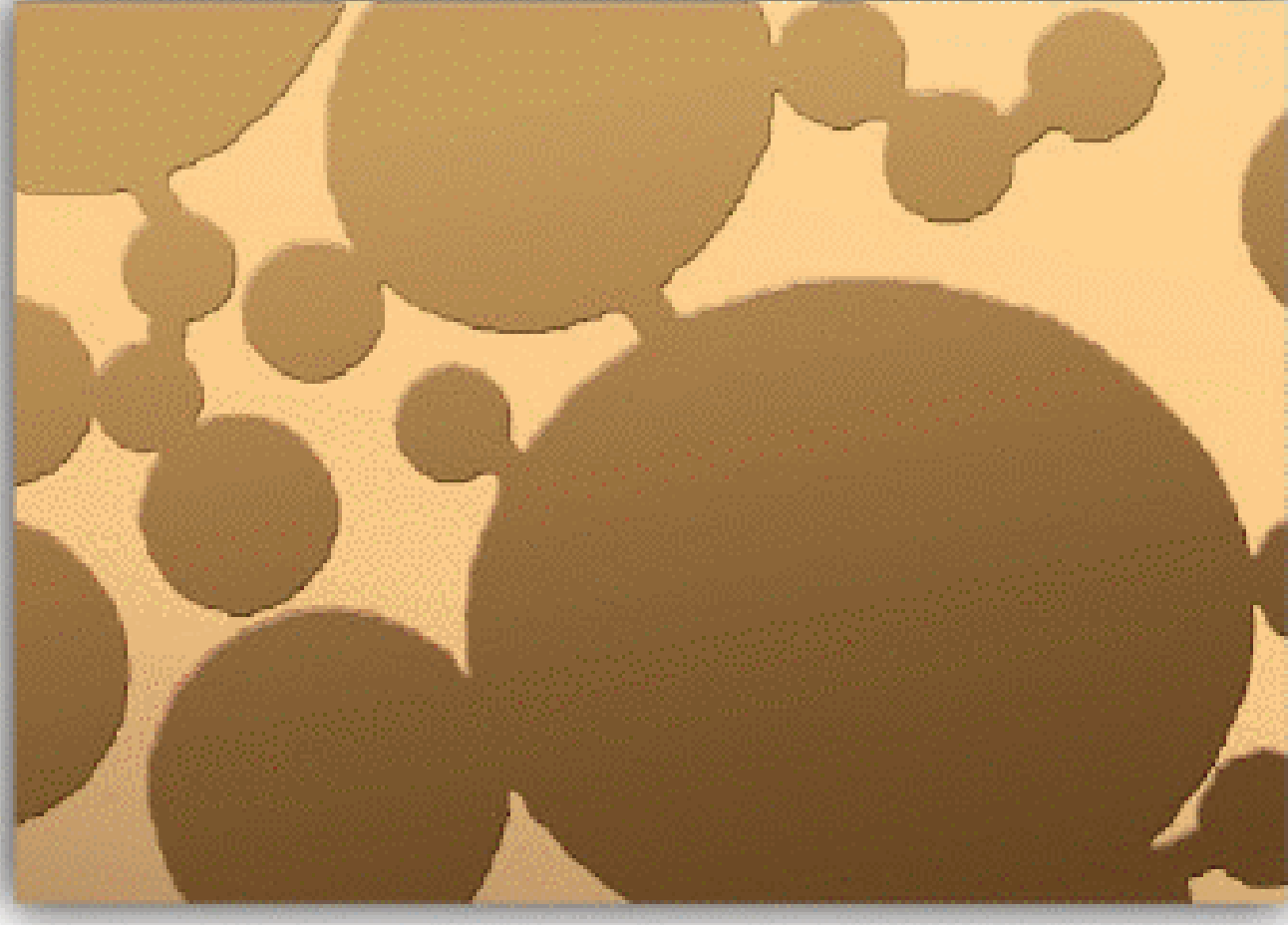
*Siyah Ayna / Mirror Ti Black*



*Altın Deri / Golden Leather*



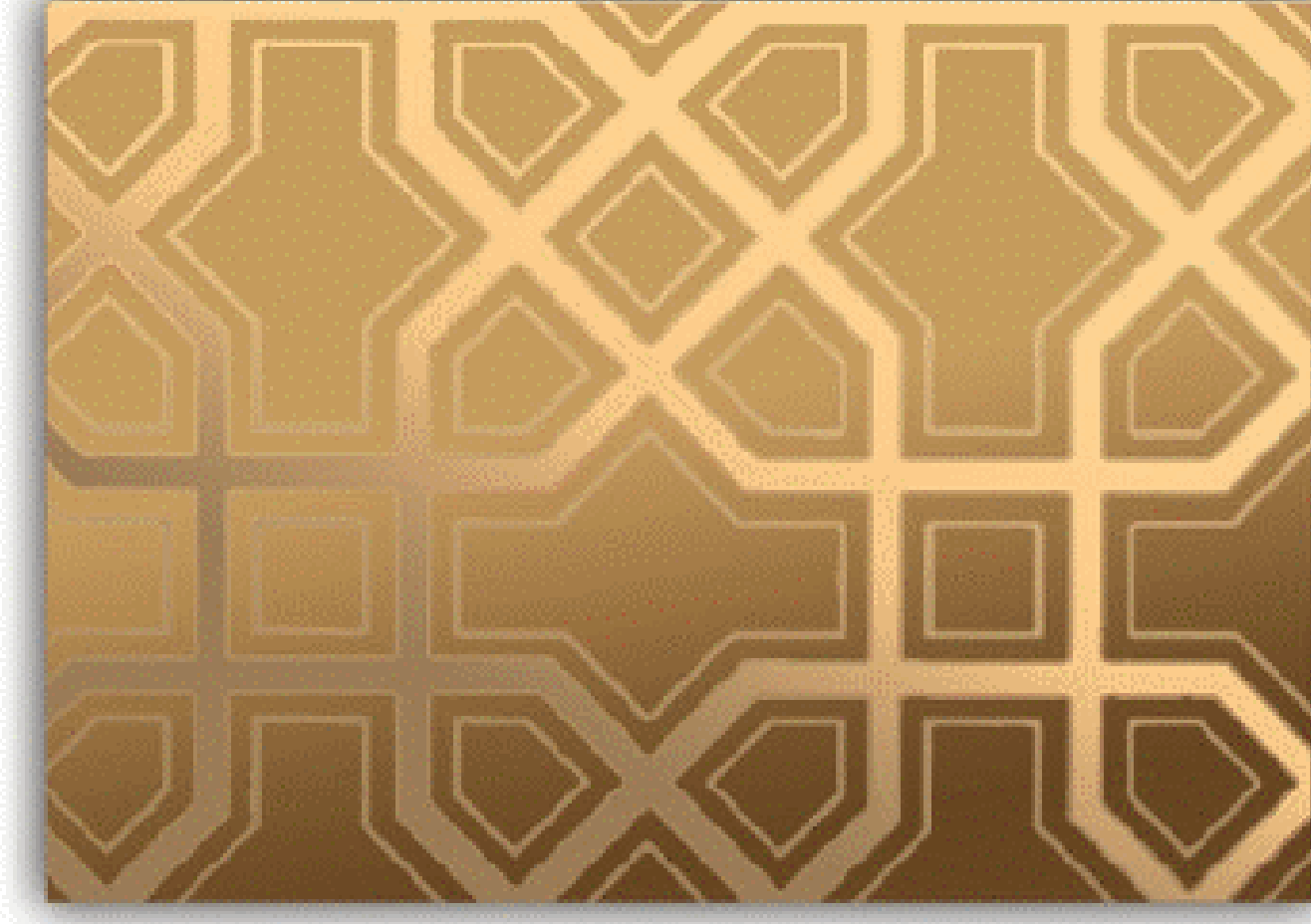
*Sarı Ayna / Golden Mirror*



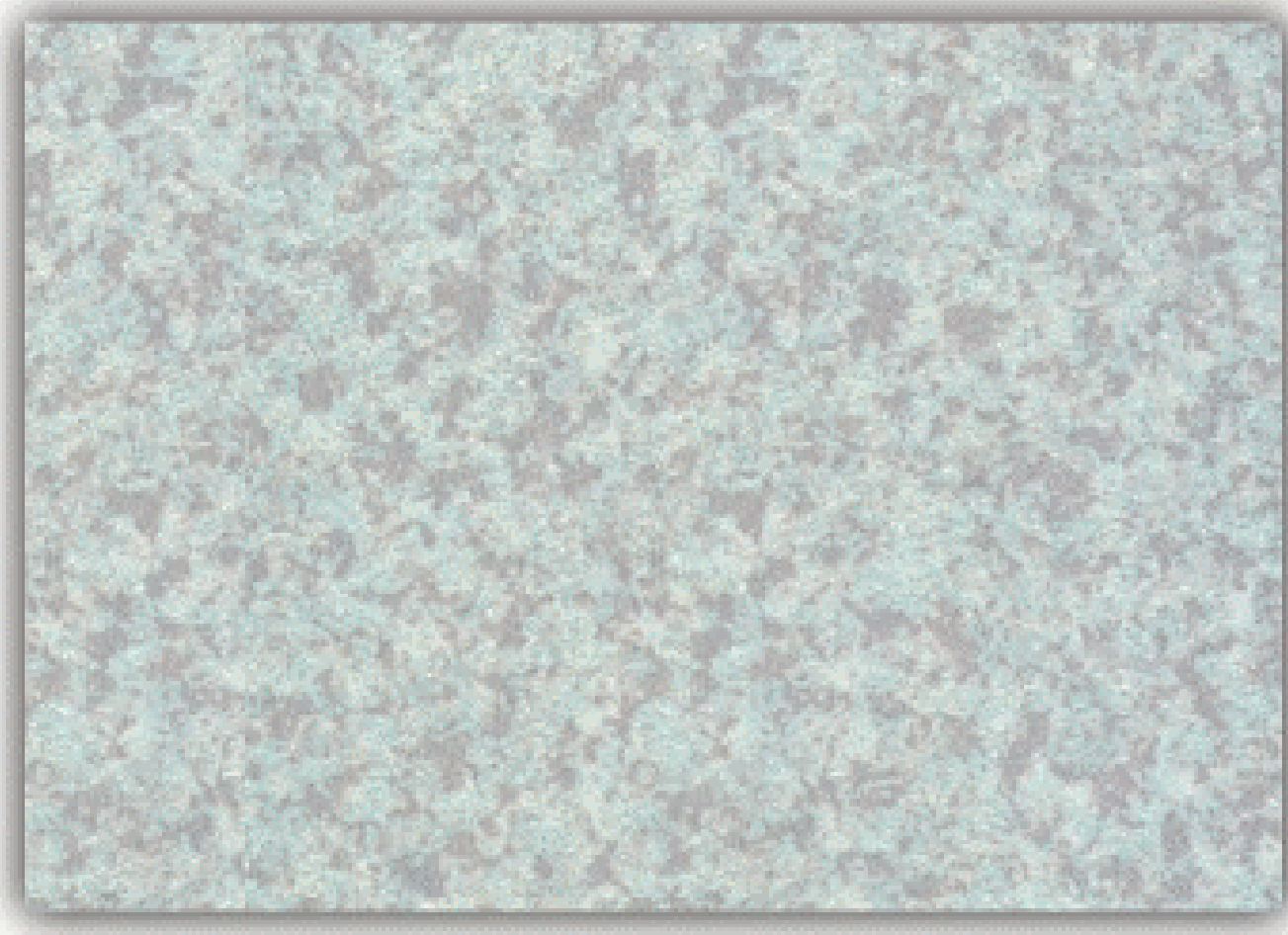
*Balon Desen Sarı Ayna  
Mirror Ti Gold (Bubble)*



*Sarı Satine  
Golden Hairline*



*İslami Desen Sarı Ayna  
Islamic Design Golden*



*Lmn 7303*



*Lmn 4251*



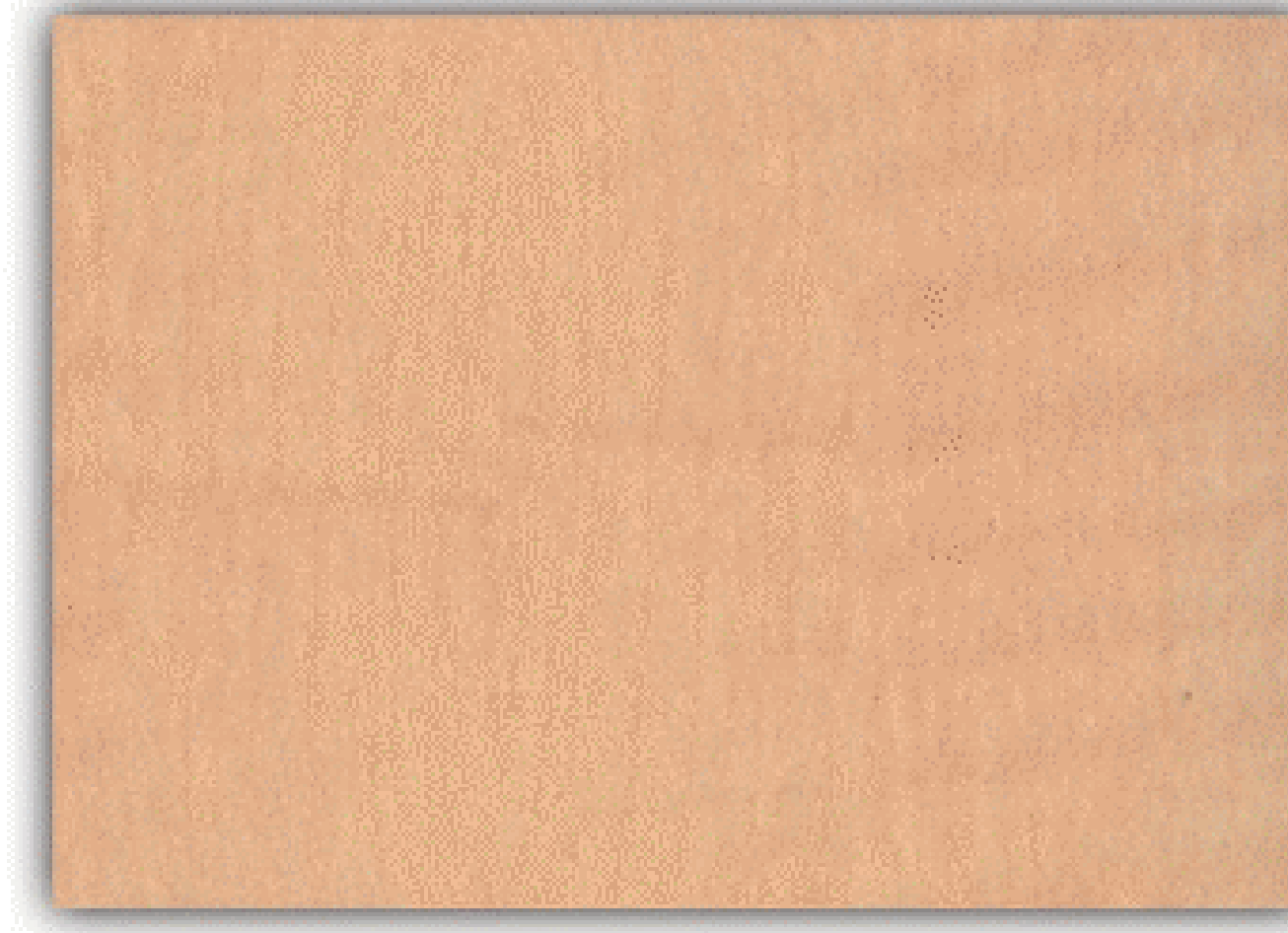
*Lmn 4259*



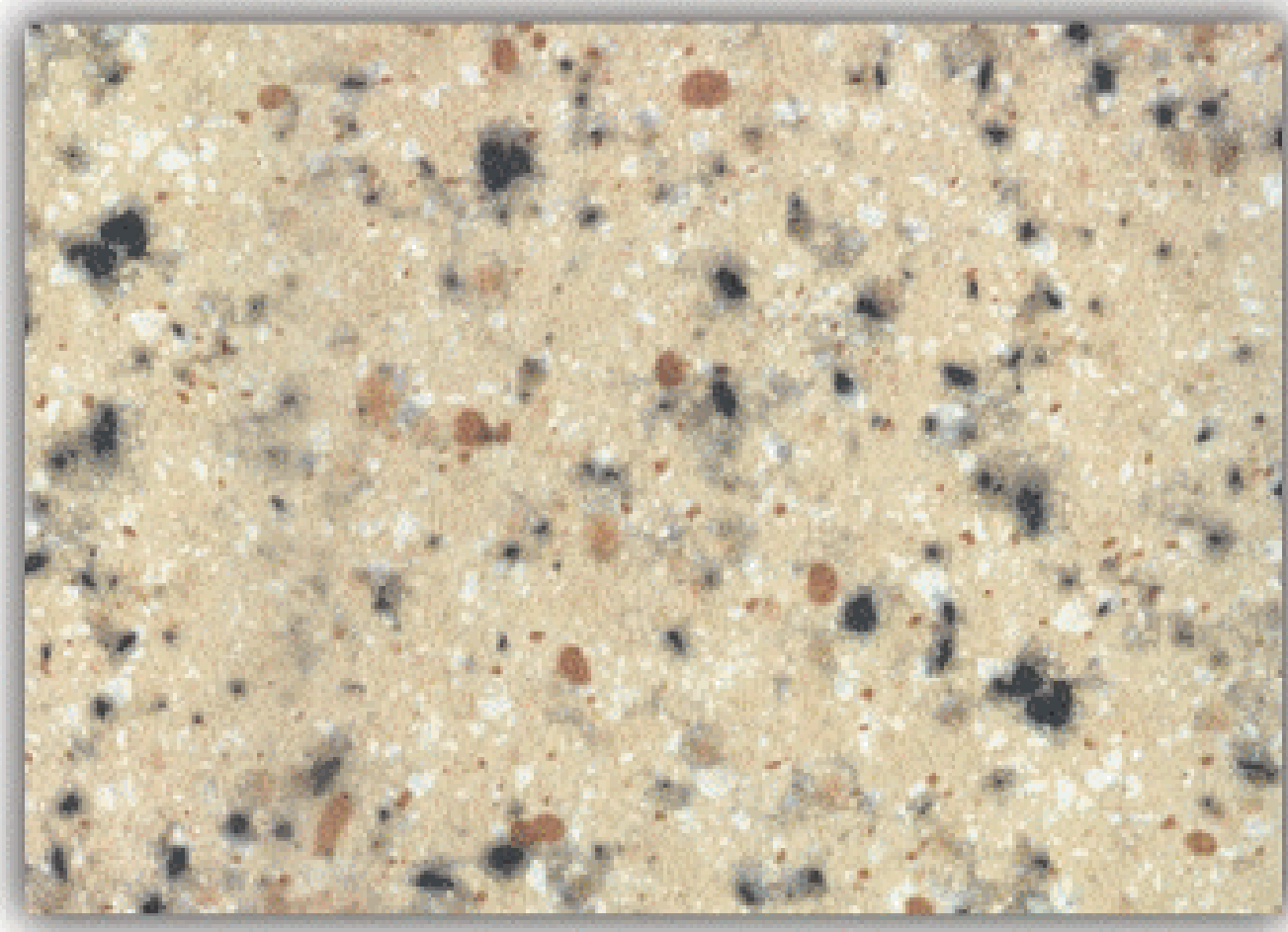
*Lmn 4207*



*Lmn 9425*



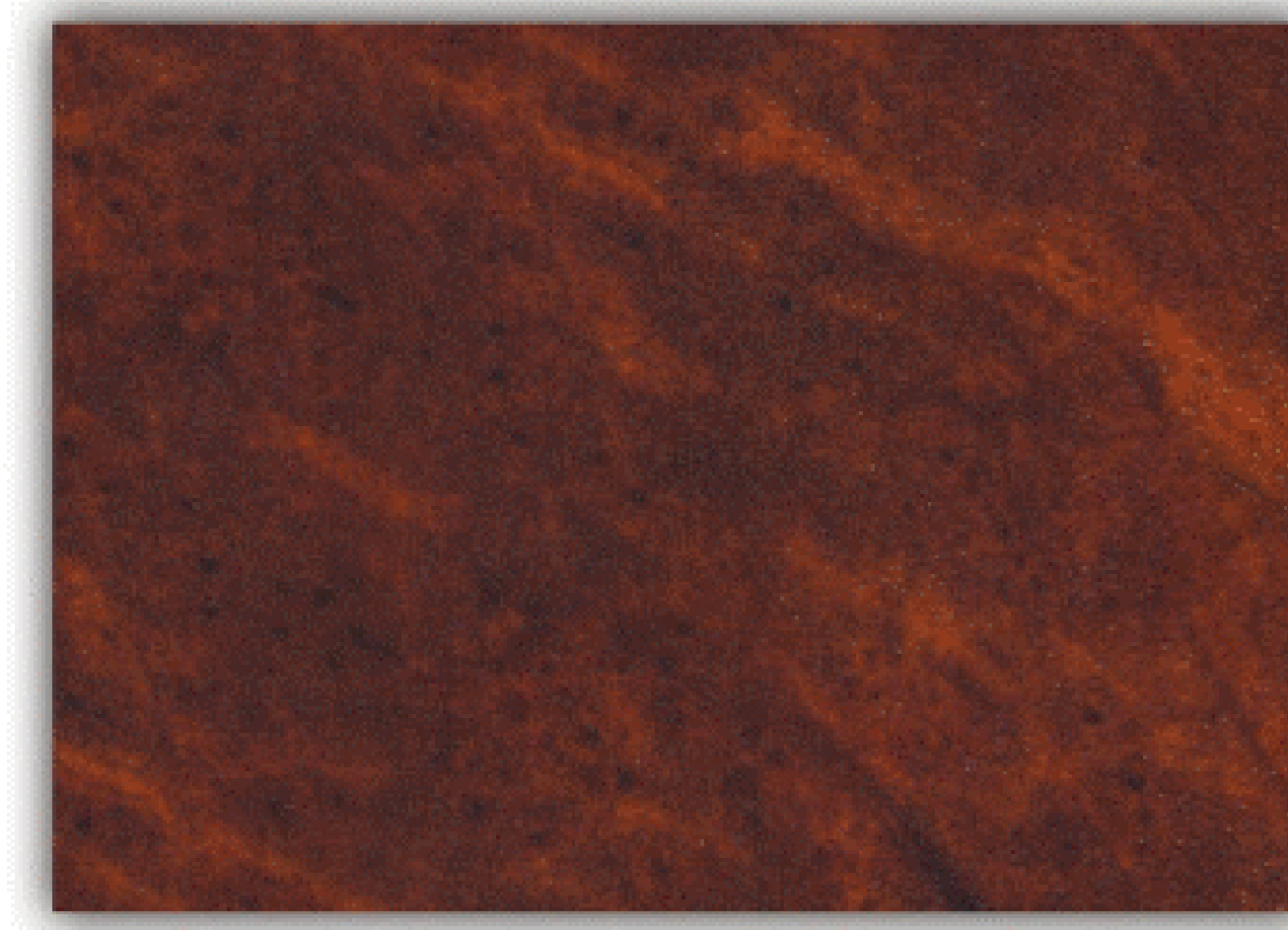
*Lmn 4206*



*Lmn 5414*



*Lmn 4210*



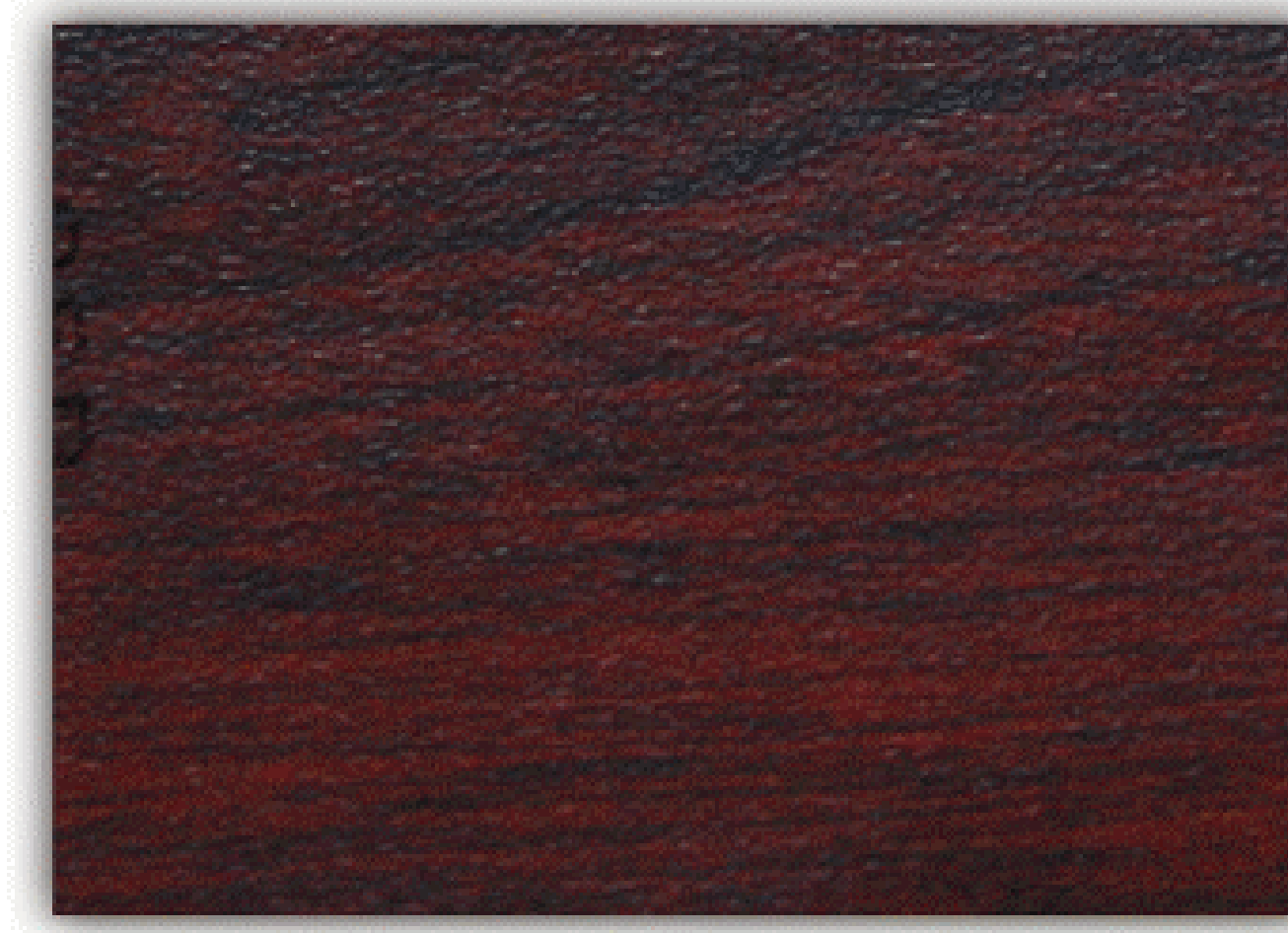
*Lmn 4260*



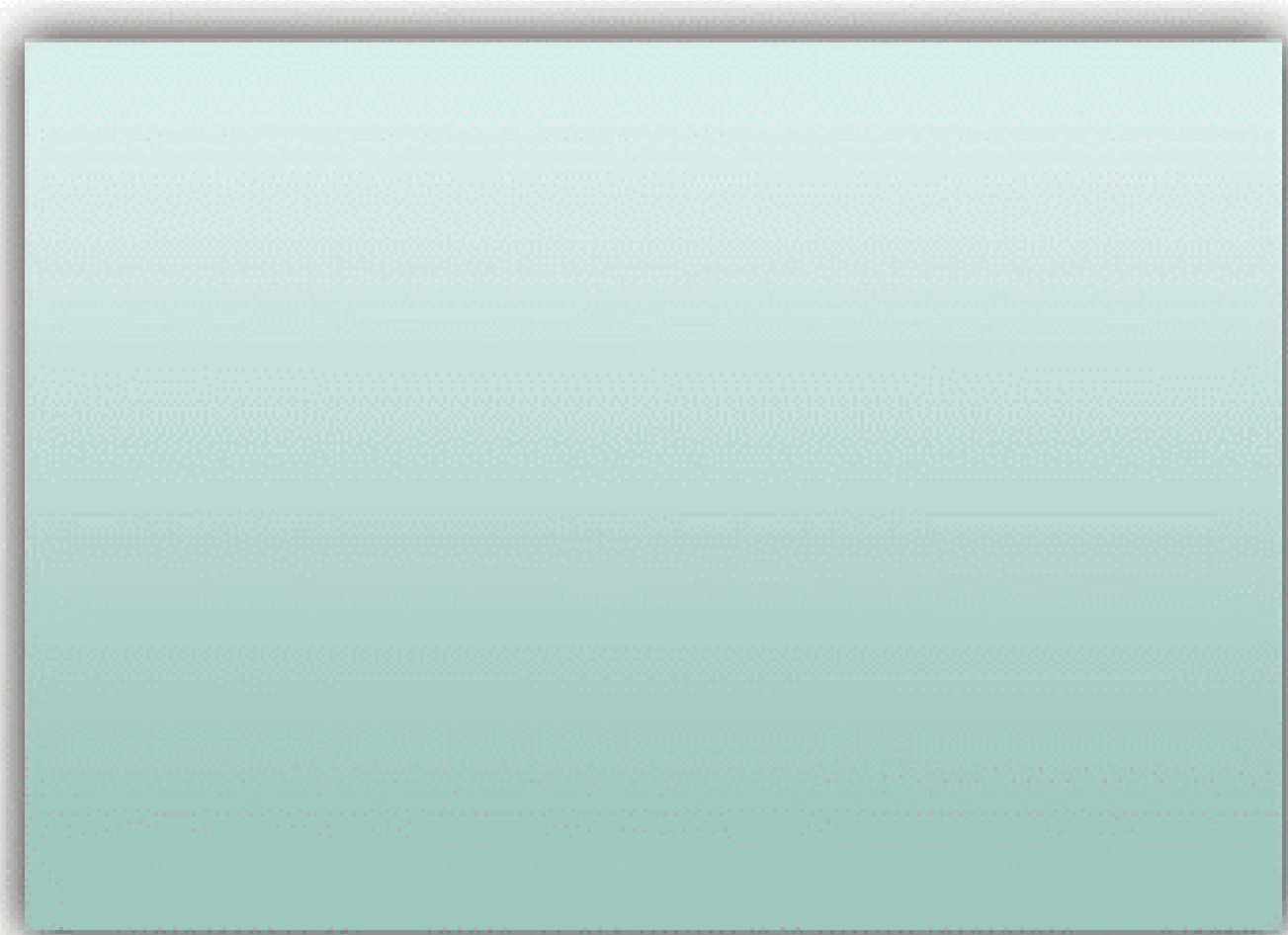
*Lmn 4252*



*Lmn 3045*



*Lmn 3051*



*Cam*