

*Building your booth the right way for all the right reasons*

### Environmentally Safe

Each Auto/Truck Crossdraft Booth meets safety and code requirements—NFPA-33, and IFC—to protect those that work in any automotive spray environment, and the world outside. Your Auto/Truck Crossdraft Booth will be designed to efficiently remove the overspray from the painting operation while maintaining uniform air flow throughout the work area.

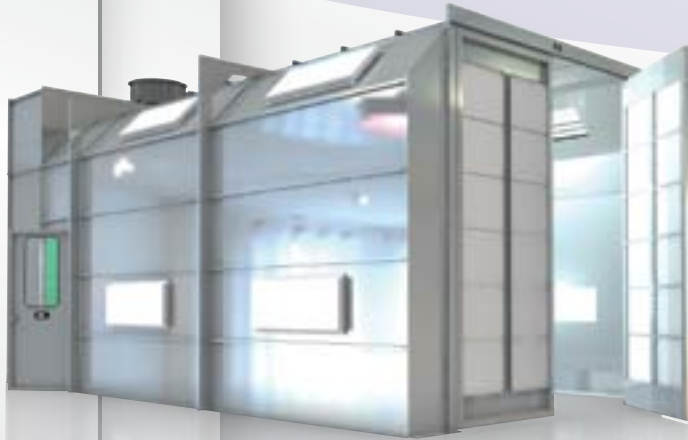
**Highest Quality Finish** Spray Systems offers three versions of the traditional crossdraft style paint booths: front flow, rear flow and pressurized models. Designed for larger, intermediate-sized vehicles, our customers frequently compliment our booths for creating an environment that allows painters to apply the highest quality finishes. We do this by collecting and removing airborne paint particles, efficiently and effectively, through our custom engineering process ensuring uniform air flow.

**Lower Operating Costs** We use higher efficiency components and designs. We offer energy efficient components from VFD drives, recirculating exhaust systems, high efficiency motors, (T-8) lighting, and booth idle packages resulting in lower operating costs.



## PACKAGE FEATURES & BENEFITS

- **CNC and CAD Technology**—booth panels are manufactured of premium 18 gauge G-90 galvanized steel, and are precision-punched on six inch centers, allowing for easy nut and bolt assembly, and exploded view assembly drawings supplied
- **Quiet Exhaust Fan**—typically operates at low dBA noise levels below OSHA limits
- **High Efficiency Motor**—tri voltage, TEFC, motors that match the high efficiency performance of the exhaust fan, three phase with a single phase option
- **Exhaust Filters** – 20" x 25" filters yield a larger filter area. A manometer to properly manage filter maintenance is included
- **Intake Filters** – these filters are specifically designed to remove 98% or more of dust particles in order to deliver a Class A finish
- **Lighting** – high efficiency lighting fixtures designed for mounting outside booth, industrial rated, four-tube (T-8) fluorescent fixtures with dust-tight seals and are ETL listed
- **Latches** – heavy duty, quick release type with positive closing and panic hardware
- **Doors/Side Access Door** – both the filter and solid type doors have a structural steel tube frame, leak proof wiper type seals at the bottom and polyfoam seals at the center; side access door meets NFPA Lifeline 101 requirements, and includes an 18" x 36" observation window
- **UL Listed** – all electrical components and latching devices are UL/ETL listed
- **Essential Accessories** – all necessary caulking, nuts and bolts, hardware for proper booth installation

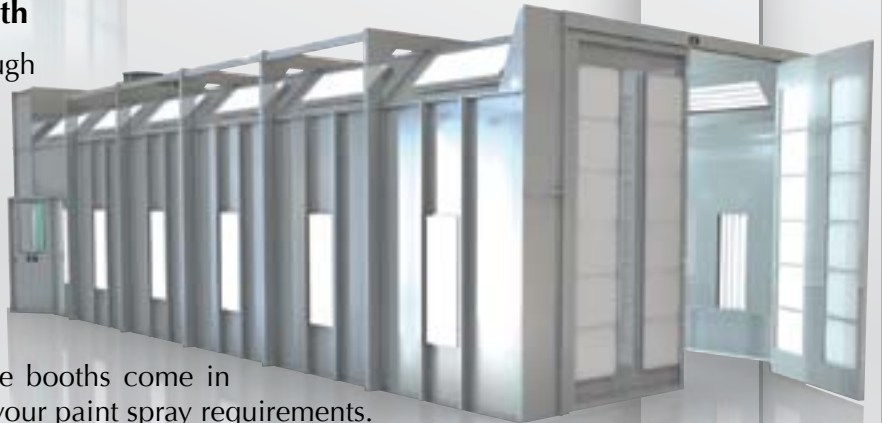


## ATB261412-F (or R) Crossdraft Paint Booth

The 26-foot front flow booth draws air in through filtered front doors and exhausts the air out through the filter banks located at the rear of the booth. In contrast, the rear flow booth is designed with a rear-filtered wall, and the exhaust chamber is located at the opposite end near the entry doors. The rear flow design minimizes dust contamination within the spray booth, and is just as economical as the front flow design.

## ATB451612-F (or R) Crossdraft Paint Booth

The 45-foot front flow booth draws air in through filtered front doors, and exhausts the air out through the filter banks located at the rear of the booth. In contrast, the rear flow booth is designed with a rear-filtered wall, and the exhaust chamber is located at the opposite end near the entry doors. The rear flow design minimizes dust contamination within the spray booth, and is just as economical as the front flow design. These traditional style booths come in standard lengths of 26 feet and 45 feet—to fit your paint spray requirements.



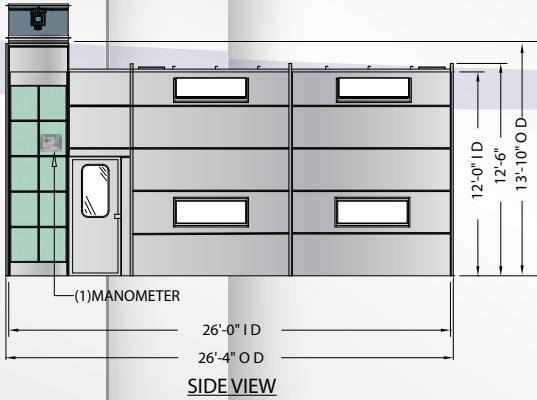
## ATB451612-P Pressurized Paint Booth

Spray Systems Pressurized Booth is designed as a pressurized crossdraft, which creates a positive booth atmosphere. By providing uniform air movement throughout the booth, you'll have an ultimate clean paint environment for those high quality finishes. This 45-foot, pressurized paint booth is perfect for larger vehicle or equipment painting requirements, and works well in conjunction with an air make-up unit that combines both spray and bake operations for high production shops. The air replacement system for our pressurized booth is purchased separately, and can be provided by Spray Systems.

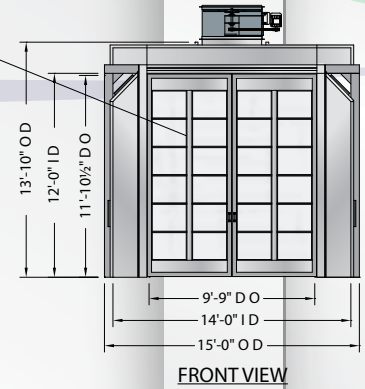
## OPTIONS / ACCESSORIES

- Access Doors
- Air Make-up Units
- Air Solenoid Valves
- Constant Velocity Controls
- Control Panels
- Energy savings stand-by/idle mode
- Exhaust Stack Components
- Front Filter Doors
- Heaters / Infrared
- Lighting
- Magnahelic Gauges
- Observation Windows
- Pressurized Air Supply Plenums
- Safety Shut-Down System
- Specialized Filters

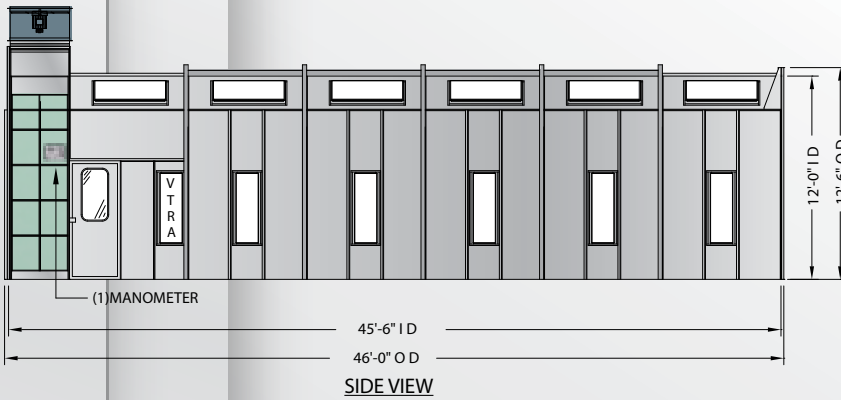
### ATB261412-F or R Flow Paint Booth



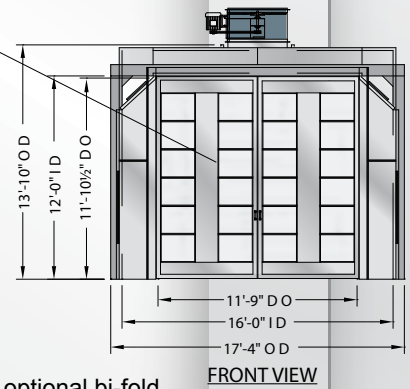
Shown with standard single leaf front filtered doors



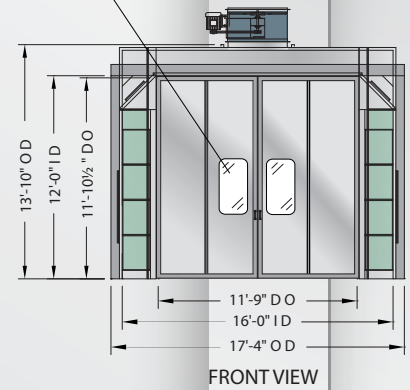
### ATB451612-F or R Flow Paint Booth



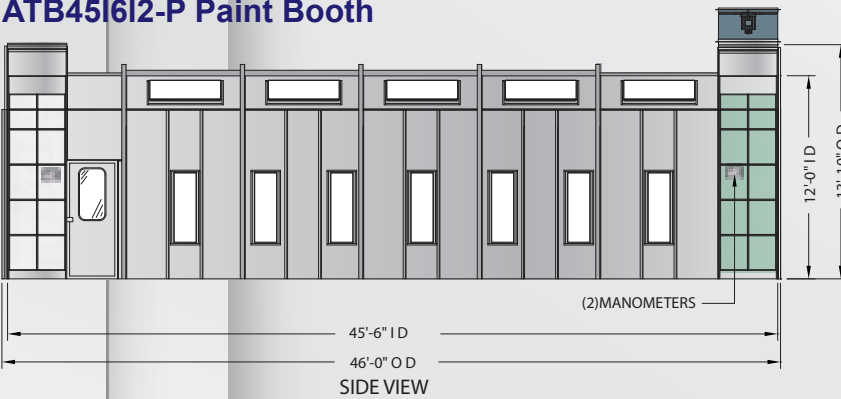
Shown with standard single leaf front filtered doors



Shown with optional bi-fold doors and optional observation windows



### ATB451612-P Paint Booth



Model Number	Work Dimension			Overall Dimension			Exhaust Fan	Motor H.P.	SCFM @5"S.P.	Exhaust Filter	Intake Filter	Lights (Qty)	Shipping Wt. Lbs
	L	W	H	OL	OW	OH							
ATB261412-F	26'-0"	14'-0"	12'-0"	26'-4"	15'-0"	13'-10"	42"	3	17000	30	24	10	6500
ATB261412-FDT	26'-0"	14'-0"	12'-0"	26'-4"	15'-0"	13'-10"	42"	3	17000	30	24	10	6900
ATB261412-R	26'-0"	14'-0"	12'-0"	26'-4"	15'-0"	13'-10"	42"	3	17000	30	24	10	6500
ATB261412-RDT	26'-0"	14'-0"	12'-0"	26'-4"	15'-0"	13'-10"	42"	3	17000	30	24	10	6900
ATB451612-F	45'-6"	16'-0"	12'-0"	46'-0"	17'-4"	13'-10"	42"	5	19600	28	24	24	8500
ATB451612-FDT	45'-6"	16'-0"	12'-0"	45'-10"	17'-4"	13'-10"	42"	5	19600	28	24	24	9100
ATB451612-R	45'-6"	16'-0"	12'-0"	46'-2"	17'-4"	13'-10"	42"	5	19600	28	24	24	8500
ATB451612-RDT	45'-6"	16'-0"	12'-0"	45'-10"	17'-4"	13'-10"	42"	5	19600	28	24	24	9100
ATB451612-P	45'-6"	16'-0"	12'-0"	46'-0"	17'-4"	13'-10"	42"	5	19600	28	24	24	10500
ATB451612-PDT	45'-6"	16'-0"	12'-0"	45'-10"	17'-4"	13'-10"	42"	5	19600	28	24	24	11100

Specifications are subject to change without notice



# Important Reasons Why Spray Systems Is Your Best Choice

## Built To Last



- **Precise**—CNC manufacturing means precise hole-positioning for easy bolting and panels that fit squarely together
- **Quality appearance**—with durable premium grade G-90 galvanized steel
- **Durable**—Nut and bolt assembly with panels punched 6" on centers
- **Quick assembly**—Panels precision fit, even for the most complex booth designs.

## Faster - Easier Installation



- **4-Sided Panel Construction**—Panels with flanges on all four sides mean fewer parts to assemble and eliminates tie-in angles required with two-sided panels
- **Computer generated labels**—Labels on every component simplify sorting and speed installation
- **Itemized assembly drawings**—Item numbers on labels correspond to components on 3-D exploded view drawings
- **Save time and money**—Ease of assembly reduces time and cost of installation

## Quiet-High Performance Exhaust Fans



- **Quiet**—Typically operates at noise levels below OSHA limits. Some competitor's fans operate as high as 105 dba. We have engineered fans as quiet as 64 dba for custom booths.
- **Efficient**—Computer selected for optimum performance at lowest possible fan blade speed
- **Dependable**—High efficiency, Tri-voltage, TEFC motor
- **Quality**—Designed and manufactured in-house; for easy installation, motor and drives ship pre-assembled.

## Efficient-Effective Lighting



- **Uniform lighting**—With 4-tube fixtures to illuminate evenly
- **Cost efficient**—T-8 type fixtures reduce power cost by 20%
- **Easy accessibility**—Hinged panel for tube replacement
- **Easy mounting**—Light panels with framed openings are designed for bolting fixtures easily into place
- **Industrial Rated**—with dust tight seals
- **Meets booth code requirements**—UL/ETL approved and labeled

## Premium—Secure Shipping



- **Damage prevention**—Fully enclosed and banded crating prevents shipping damage on LTL shipments
- **No installation down time**—Special piece loading system ensures no missing parts to delay installation
- **Quality control**—Shipments cross-checked three times to ensure order is complete along with 100 % customer satisfaction

## Call For A Free Consultation

Discuss Your Spray Booth Needs  
With Your Spray Systems Advisor

800 736-6944

1363 East Grand Avenue, Pomona, CA 91766  
Phone 909 623-6944 • Fax 909 622-6267

[www.spraysystems.com](http://www.spraysystems.com)

