

5 Year Lake Arrowhead Bass Catch 2014-2018

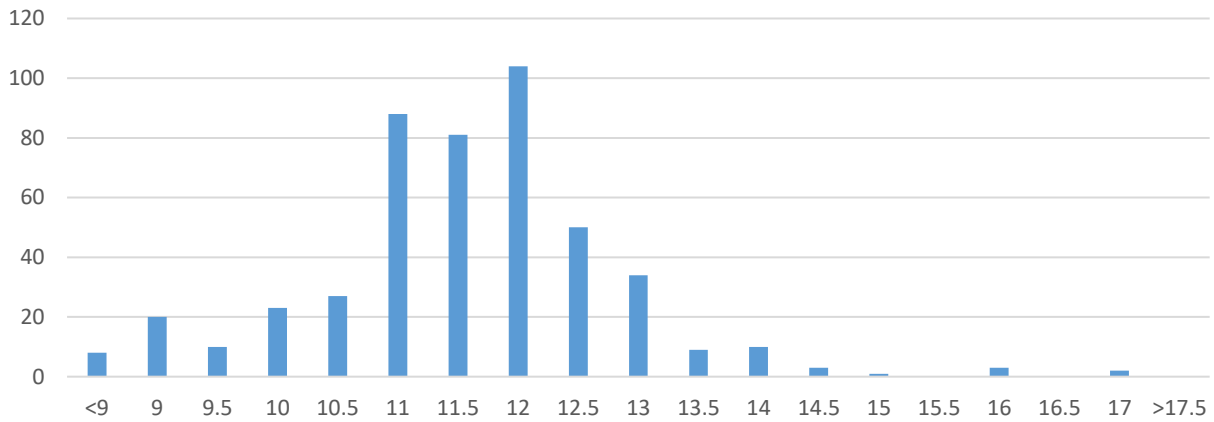
<u>Year</u>	<u>Days fished</u>	<u>Total Bass</u>	<u>Bass catch per day fishing</u>	<u>Bass Harvested</u>
2014	20	600	30	0
2015	16	369	23	30
2016	28	717	25	117 (16.3% of total)
2017	31	691	22	147 (21.3% of total)
2018	20	430	21	85 (20% of total)
5 Year Total	115	2807	24.4	379

***Days fished/total bass/bass catch/bass harvested # are for Adam Bueltel catch only not all anglers.**

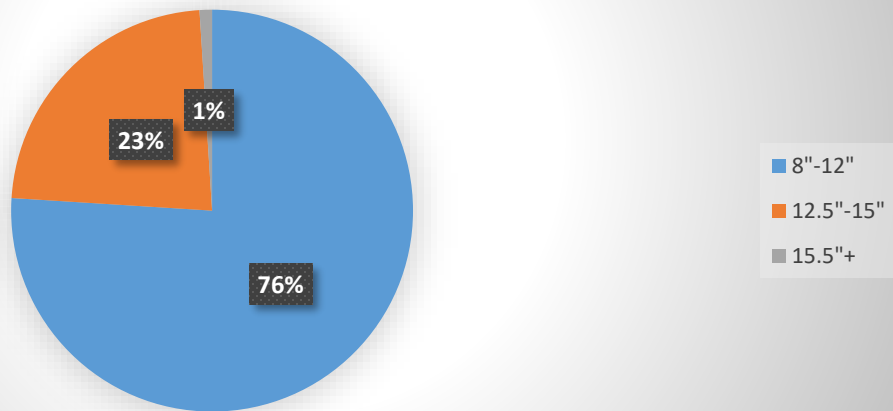
<u>Year</u>	<u>Average Length</u>	<u>Average Weight</u>	<u>Average RW%</u>	<u>% of bass caught over 15+inch</u>
2014	?	?	?	1.2%
2015	12.01 inch	.90 lbs.	?	2.4%
2016	12.37 inch	.97 lbs.	91.3%	6.69%
2017	12.80 inch	1.09 lbs.	91.4%	12.5%
2018	13.23 inch	1.15 lbs.	88%	16%

Tiger musky first stocked in November of 2015, wipers, and walleye also stocked starting 2013/2014. Second tiger musky stocking was November 2017. Continue with bass harvest, and see more bass into 17-19 inch range and more balanced overall size range. 17+ inch Bass will help thin smaller bass recruitment and help eat larger yellow bass. Stocking program will be re-evaluated after next lake survey with Nebraska Lake Management in 2019 or 2020.

2014 Lake Arrowhead Bass Catch By Length
473 Total Bass Caught/Only 6 bass caught over 15 Inches



2014 Lake Arrowhead Bass Catch By Length
Goal is 8"-12" 40%/12.25"-15" 40%/15.25"+ 20%



2015 Lake Arrowhead Largemouth Bass Length/Catch Rate

Bass Length inches/# Bass Caught			% of bass catch
8	/	3	0.8
8.5	/	6	1.6
8.75	/	2	0.5
9	/	8	2.2
9.25	/	10	2.7
9.50	/	13	3.6
9.75	/	6	1.6
10	/	14	3.8
10.25	/	3	0.8
10.50	/	8	2.2
10.75	/	3	0.8
11	/	8	2.2
11.25	/	3	0.8
11.50	/	25	6.9
11.75	/	11	3.0
12	/	31	8.5
12.25	/	8	2.2
12.50	/	41	11.3
12.75	/	21	5.8
13	/	57	15.7
13.25	/	9	2.4
13.50	/	24	6.6
13.75	/	12	3.3
14	/	21	5.8
14.25	/	3	0.8
14.50	/	6	1.6
14.75	/	4	1.1

15	/	3	0.8
15.25	/	2	0.5
16	/	1	0.2
16.50	/	2	0.5
20.5	/	1	0.2

369 Total bass caught

Perfect bass size distribution balance is

40% of bass 8-12 inches

40% of bass 12-15 inches

20% of bass 15+ inches

As of October 2015 we are currently at

32.4% bass 8-12 inches (117 bass)

65.6% bass 12-15 inches (237 bass)

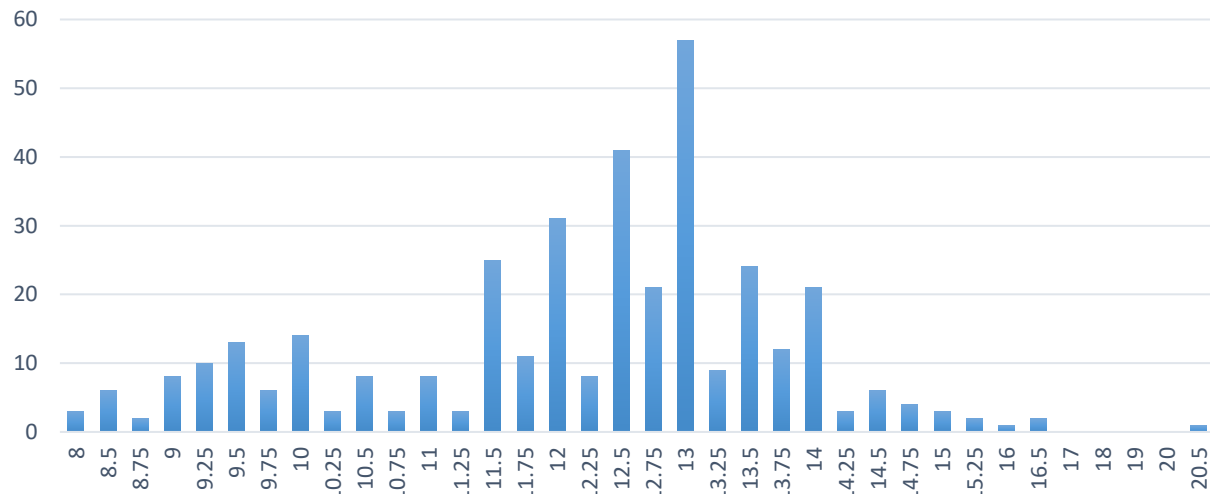
2% bass 15+ inches (9 bass)

8-15 inch bass are 98% of catch

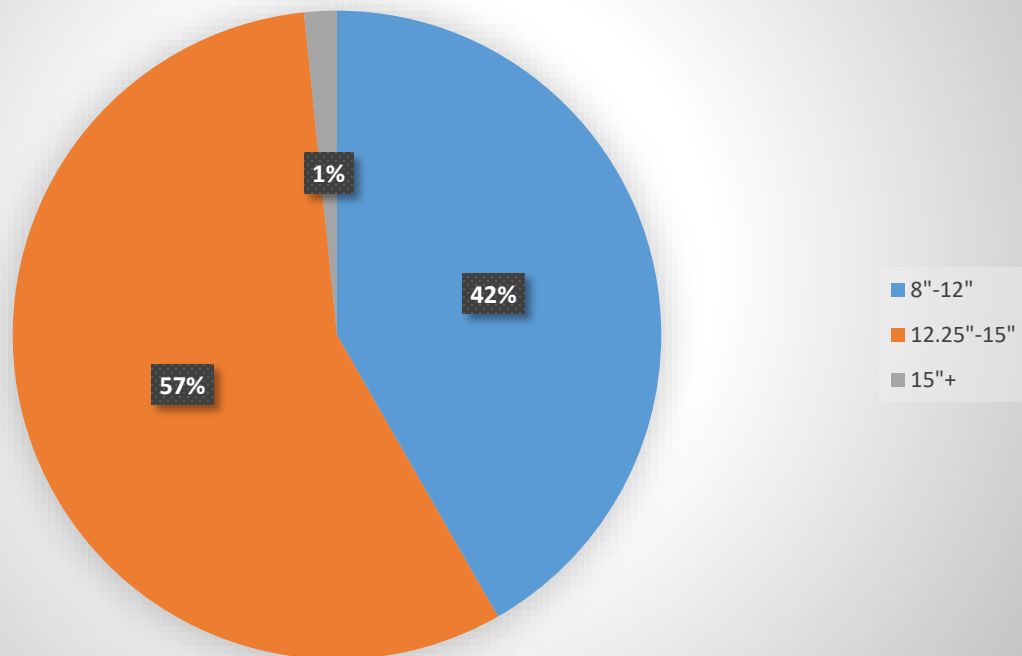
15+ inch bass are only 2% of catch

*Goal is to improve the # of bass over 15 inches in size by 18%.

2015 Lake Arrowhead bass catch by length 369 total bass

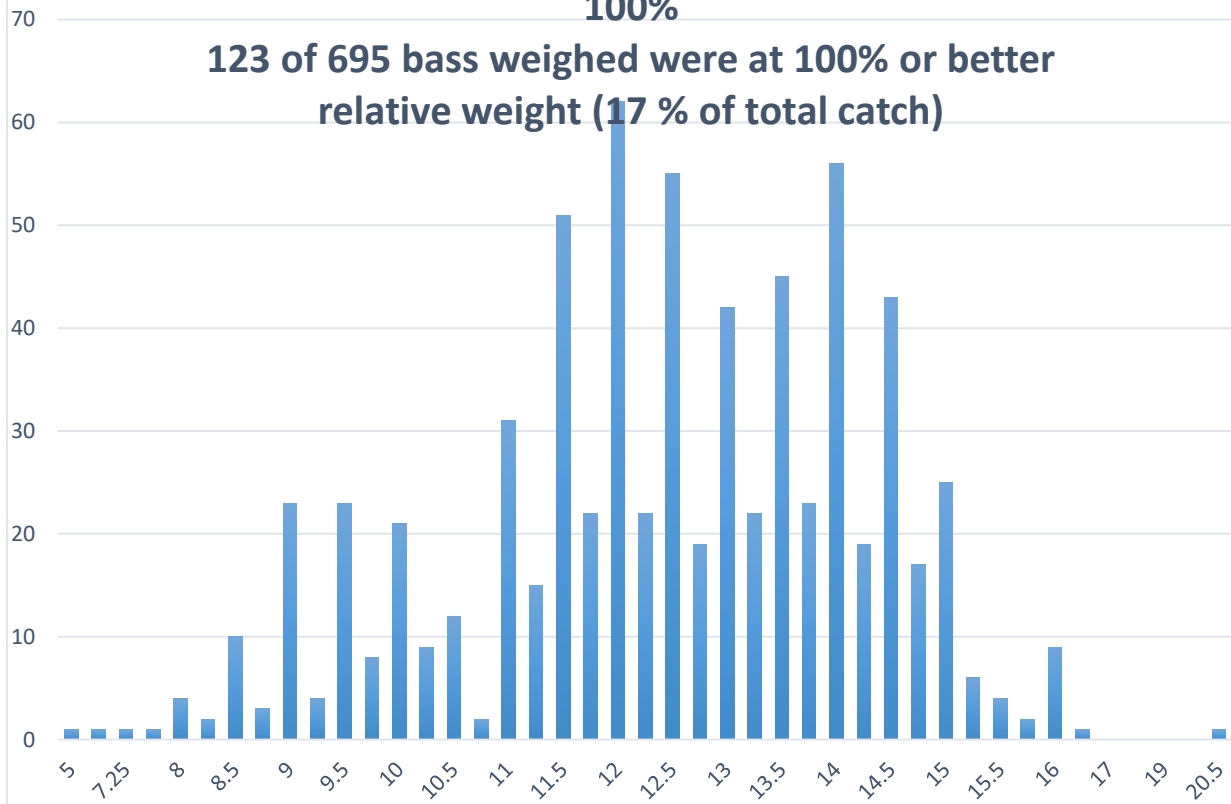


2015 Lake Arrowhead bass catch by length Goal is 8"-12" 40%/12.25"-15" 40%/15"+20%

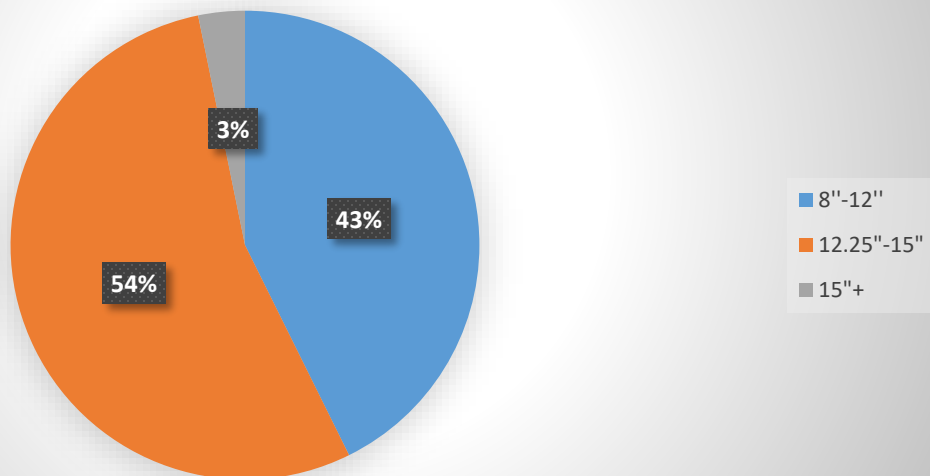


2016 Lake Arrowhead Bass catch by length
717 Total Bass/Relative Weight is 91.3%/Goal is 95-100%

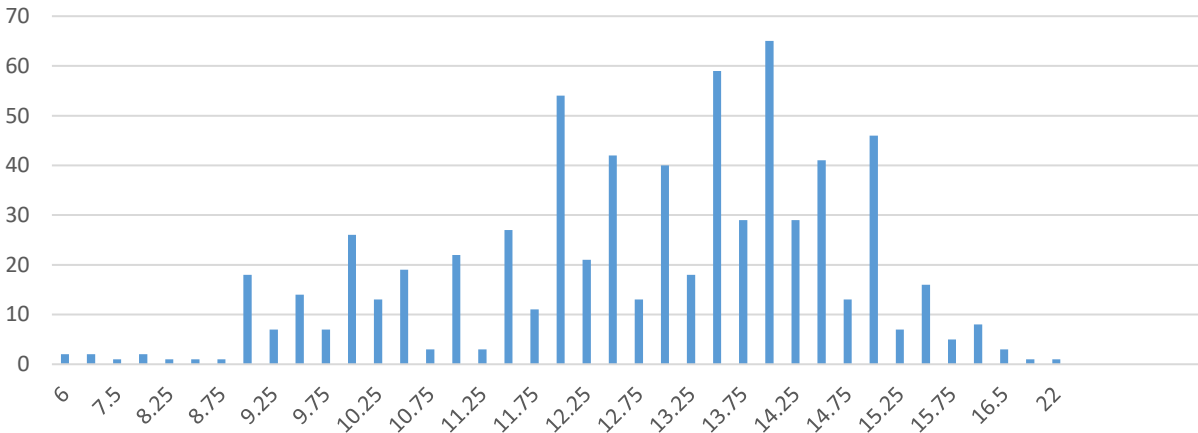
123 of 695 bass weighed were at 100% or better relative weight (17 % of total catch)



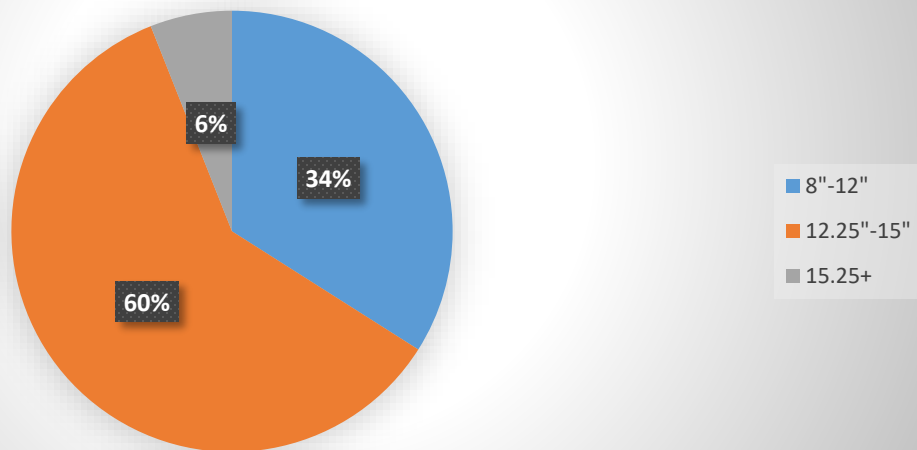
2016 Lake Arrowhead bass catch by length
Goal is 8"-12" 40%/12"-15" 40%/15"+ 20%



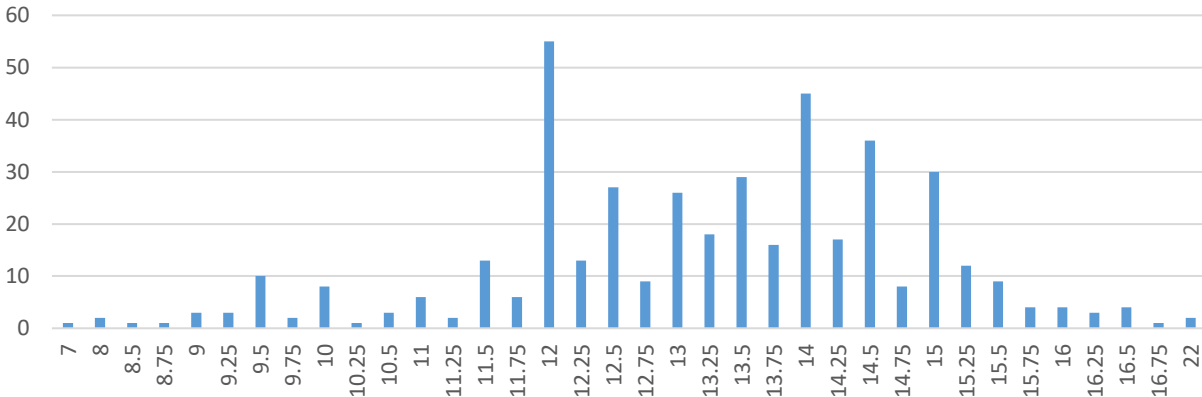
2017 Lake Arrowhead Bass Catch By Length
 691 Total Bass/Relative Weight is 91.4%/Goal is 95-100%
 134 of 691 bass weighed were at 100%+ relative weight (19.3%
 of total bass catch)
 Average bass length was 12.80 inch, Average lbs. was 1.09



2017 Lake Arrowhead Bass Catch By Length
 Goal is 8"-12" 40%/12.25"-15" 40%/ 15.25+ 20%



2018 Lake Arrowhead Bass Catch By Length
 430 Total Bass/15+Inch bass (69) 16.02% of total catch
 2017 15+ Inch bass (87) 12.5% of total catch
 2016 15+ Inch bass (48) 6.6% of total catch
 2015 15+ Inch bass (9) 2.4% of total catch
 Largest bass/22 inch (2)



2018 Lake Arrowhead bass catch by length/430 Total Bass

Goal is 8"-12" 40%/12.25"-15" 40%/15.25+ 20%

