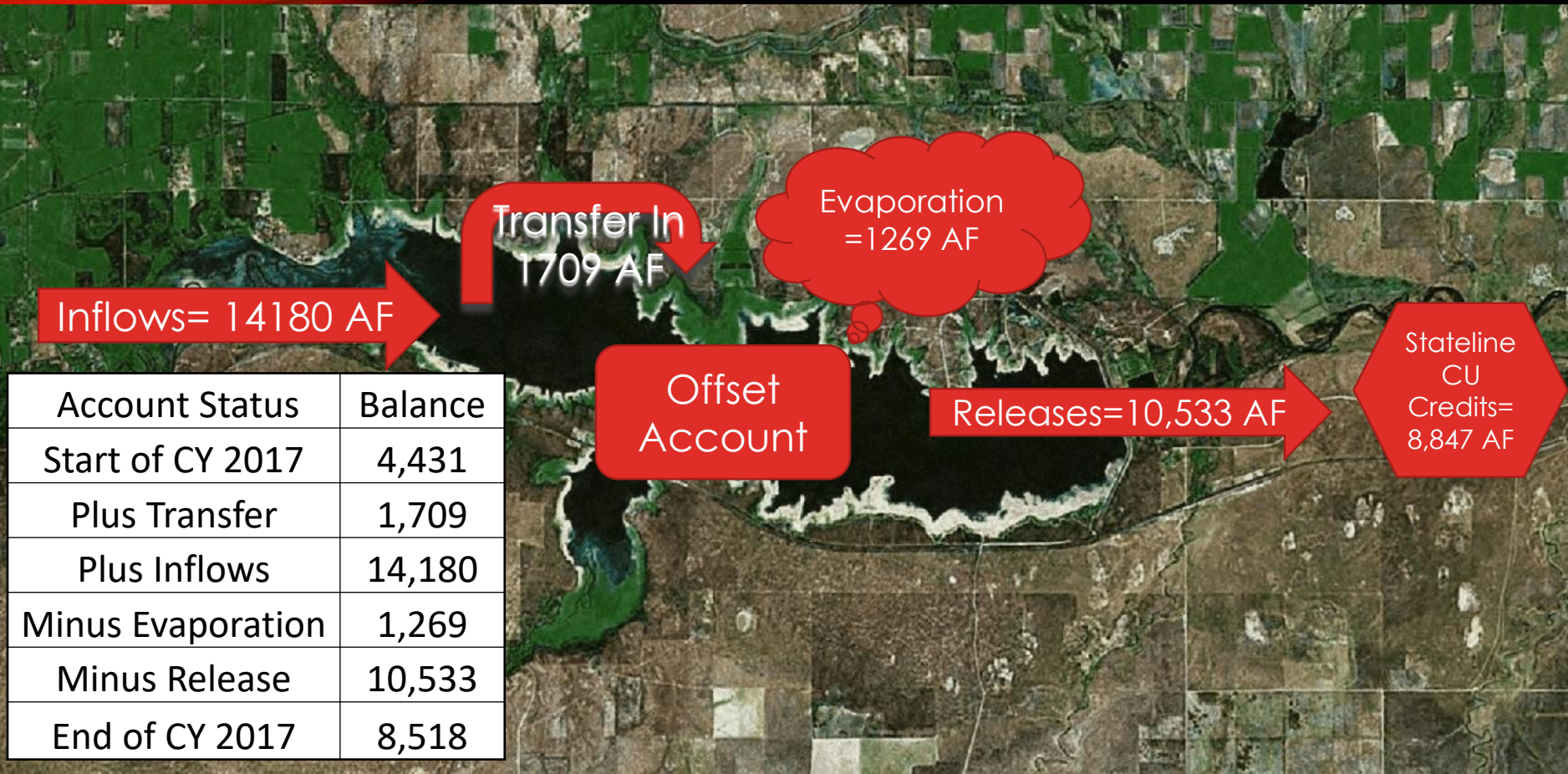


“KNOW-IT-ALL” OFFSET ACCOUNT 2017



AS AN ENCORE

LAWMA additional inflows

- Added an additional 498 AF of fully consumable credits from Fort Lyon Canal augmentation stations
- Leased and delivered 3,640 AF from Colorado Springs Utilities to the Offset Account

Current Offset Account Content

- Colorado Upstream Consumable = 1,389 AF
- Colorado Downstream Consumable = 10,360 AF
- Kansas Charge = 490 AF
- Return Flows = 402 AF
- Total Content = **12,641 AF**

HIGHLIGHT ON COLORADO UPSTREAM CONSUMABLE SUBACCOUNT

- Offset Account Resolution Allowed Colorado Well Associations to Make Deliveries to this Subaccount for Replacement of Depletions to Conservation Storage
- CWPDA has the largest amount of depletion to Conservation Storage and delivered 1,200 acre-feet to the Subaccount to be used as needed this winter
- LAWMA has a smaller depletion to Conservation Storage in the winter, but still delivered 300 acre-feet for this purpose
- Colorado notifies Kansas when replacement is made and water is booked from the Offset Account to Conservation Storage (monthly)