

# The Drowsy Chaperone

Black Hills Playhouse 2023

## Production Team

Dan Workman – Director

Sara Curran Ice – Costume Designer

Jacee Casarella – Scenic Designer

Lucas Granholm – Lighting Designer

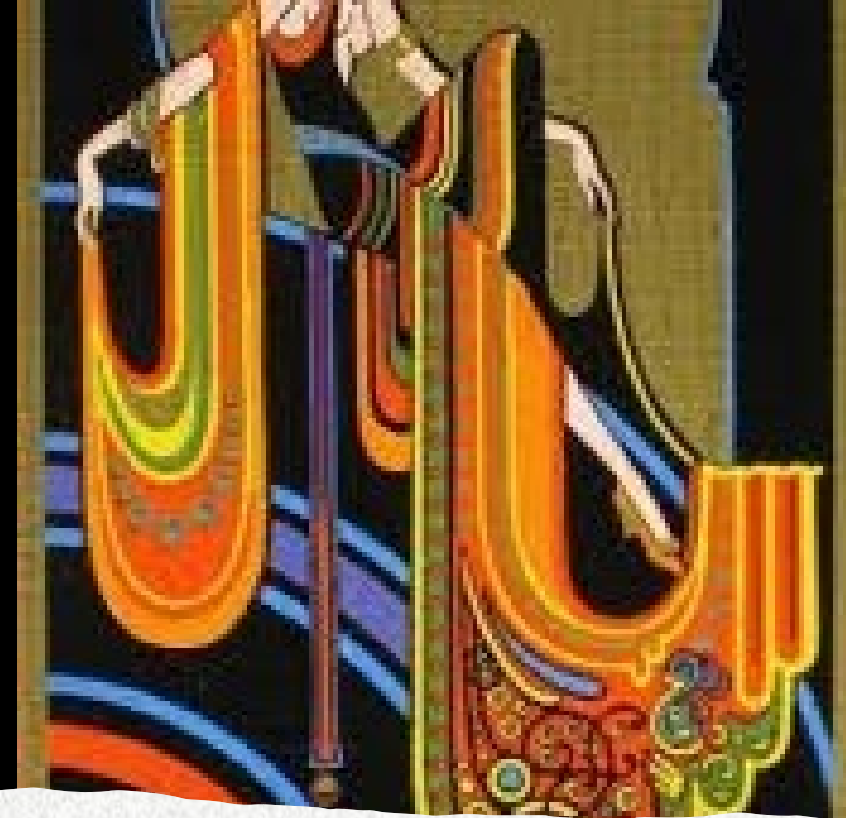
Lane Bode – Sound Designer

Andrea Moore – Choreographer

Christian Erben – Stage Manager

Vonnie Houchin – Musical Director

Best Costume Design – Broadway World South Dakota 2023



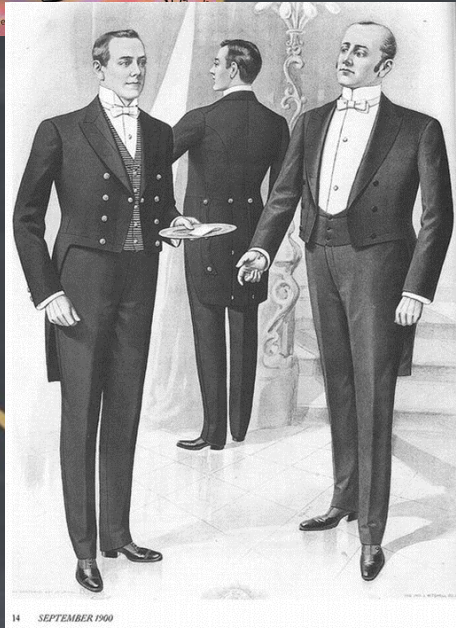
## Costume Design Inspiration

- Click here for more images  
<https://www.pinterest.com/saraicedesigns/dro-wsy-chaperone/follies-and-art-deco/>

# Man in Chair



# Mrs. Tottendale and Underling



# Robert Martin



## THE DROWSY CHAPERONE

Robert Martin  
Look 1



*Jacee Casarella*  
8/9/23

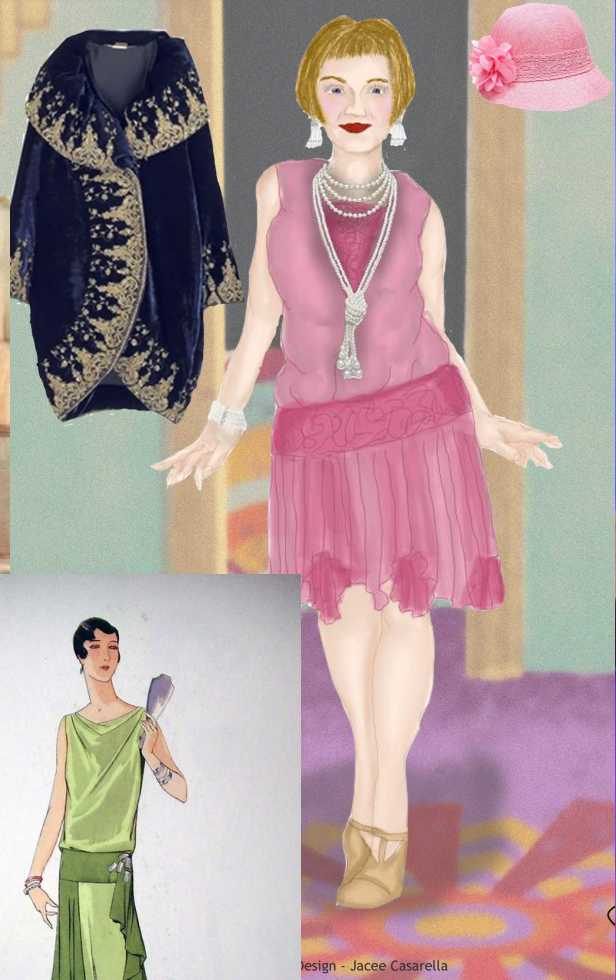
# Feldzieg



# Kitty

THE **DROWSY**  
CHAPERONE

Kitty  
Look 1



# Aldolpho and The Chaperone

THE DROWSY CHAPERONE

Aldolpho



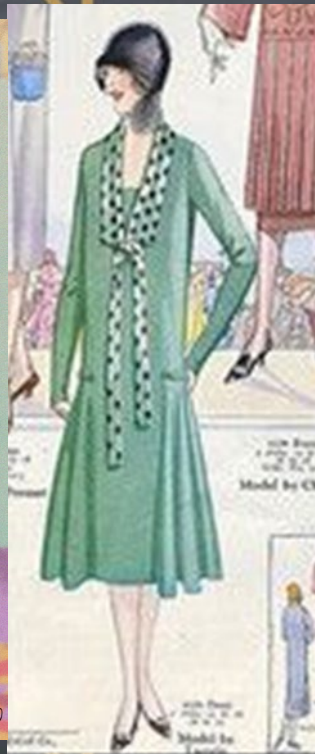
Black Hills Playhouse 2023 Set Design - Jacco Casarella

THE DROWSY CHAPERONE

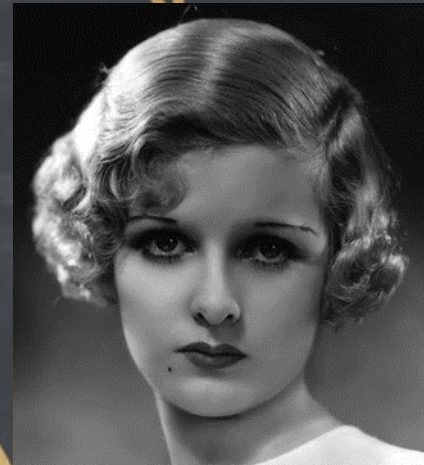
Chaperone



Black Hills Playhouse 2023 Set Design - Jacco Casarella



Black Hills Playhouse 2023 Set Design - Jacco Casarella





# Janet Van de Graaf



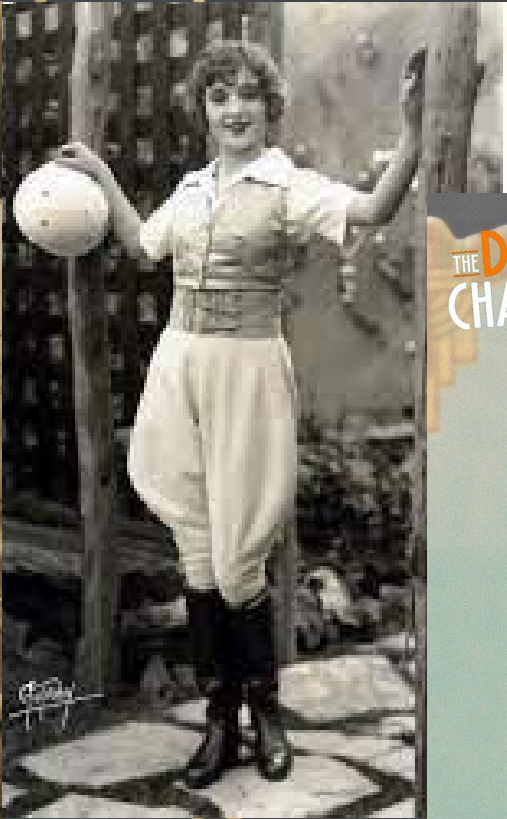
# Janet Van de Graaf



# Janet Van de Graaf



# Trix the Aviatrix



THE **DROWSY**  
CHAPERONE

Trix the Aviatrix



Black Hills Playhouse 2023 Set Design - Jacee Casarella



Sara Ferran for  
www.sarafernan.com

8/12



A kitchen set on the left side of the stage, featuring a wooden cabinet, a stove, and various kitchen items like a teapot and cups on a shelf.

A display area on the right side of the stage, featuring a red armchair and a shelf with posters, including one for 'OKLAHOMA!' and another for 'THE NEWS'. There are also some framed photos on the shelf.

A group of performers on stage. On the left, a woman in a floral coat and a man in a suit are dancing. In the center, a man in a dark suit is gesturing. On the right, a chef in a white uniform, two maids in green dresses, a woman in a pink dress, and a man in a dark suit with a top hat are performing. The background features Art Deco architectural elements like patterned screens and door frames.













ll





