

Shasta Dam to mile ~13.4 (Keswick Dam)

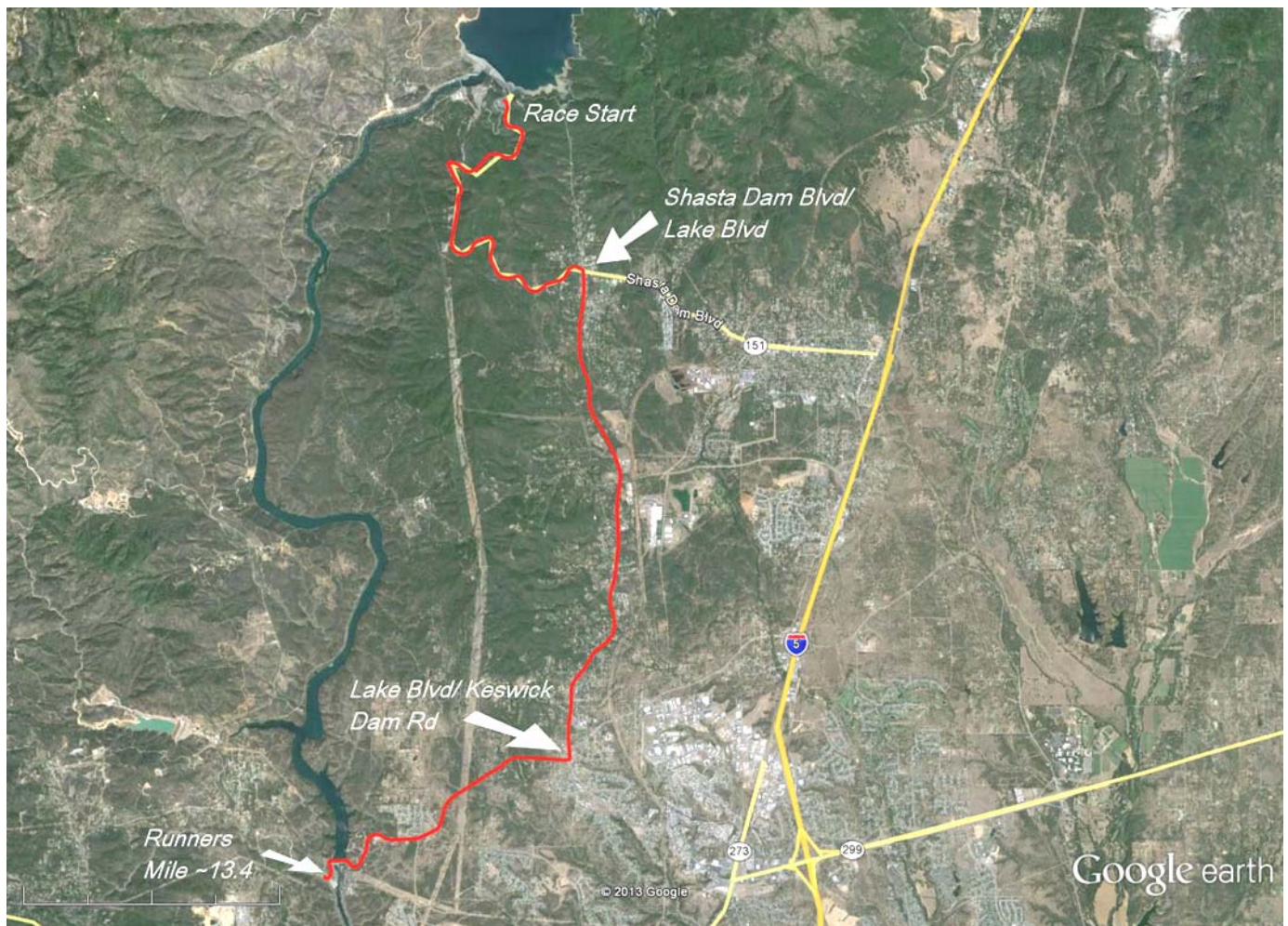
15-20 minute drive time

Leave race start –proceed to intersection of Shasta Dam Blvd./Lake Blvd.

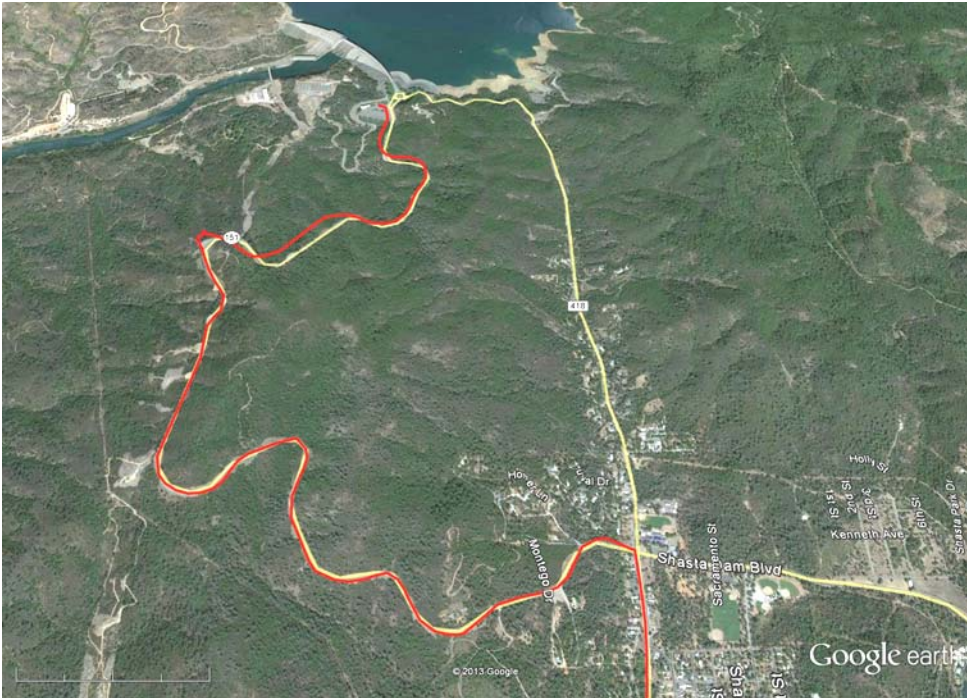
From intersection

- Head south on Lake Blvd. for 4.8 miles to Keswick Dam Rd.
- Turn right onto Keswick Dam Rd.
- Watch for traffic control soon after crossing the Keswick Dam
- Parking will be tight but should be available. Your runner will be coming down the big hill. Nice photo opportunity

Overall from Shasta Dam to mile ~13.4



Intersection of Shasta Dam Blvd and Lake Blvd



Intersection of Lake Blvd and Keswick Dam Rd



Arrive at mile ~13.4



Aerial Imagery obtained from Google Earth Pro, and modified