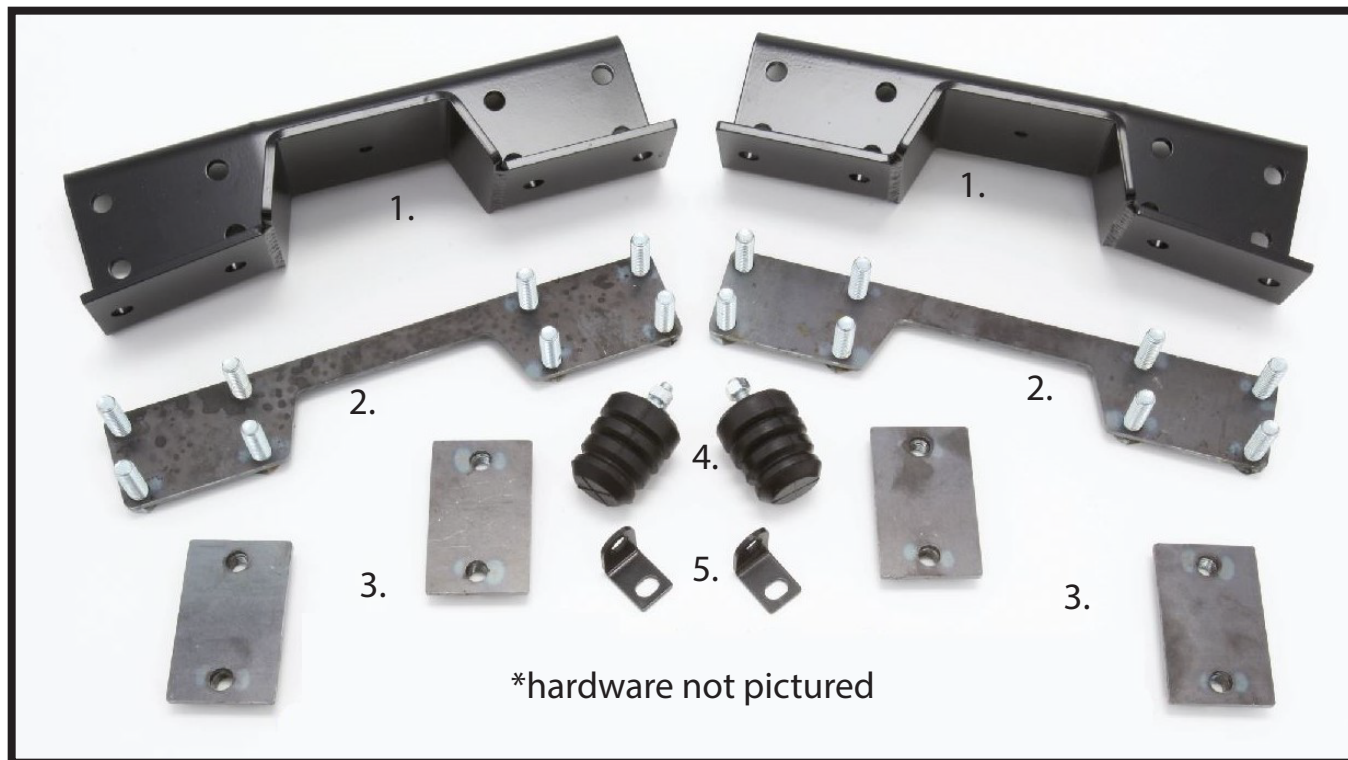




**McGAUGHY'S**  
S U S P E N S I O N   P A R T S

559-226-8196  
4603 E. VINE AVE  
FRESNO, CA 93725

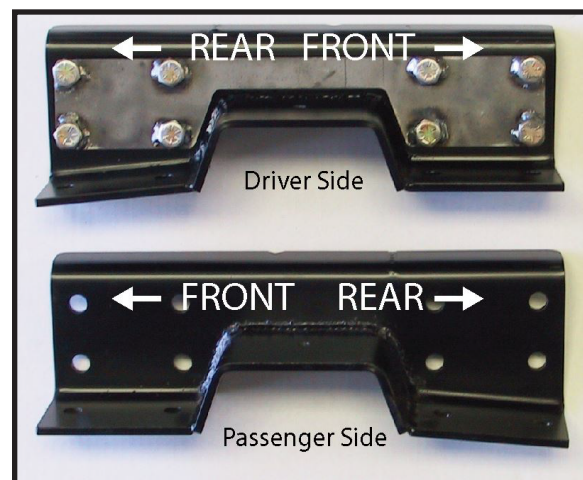
**#34045 (C-NOTCH INSTRUCTIONS)**  
**2007-18 GM 1500 TRUCK**



**Kit Includes:**

- 1. C-Notch (2)**
- 2. Inner Side C-Notch Plate (2)**
- 3. Inner Bottom C-Notch Plate (4)**
- 4. Bump Stop (2)**
- 5. ABS Bracket (2)**
- 6. Hardware pack (not pictured)**

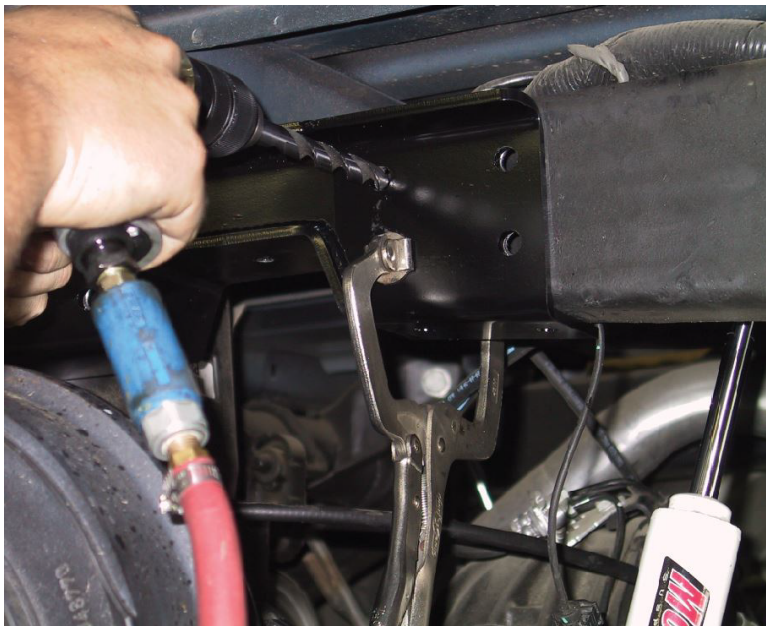
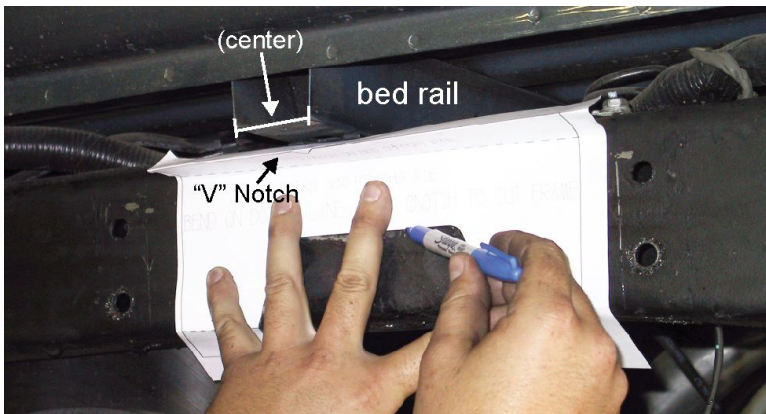
**PLEASE NOTE:** Picture on the right shows which direction to install the outer C-Notch sections. Be sure to check that you have the correct piece on the correct side before installing.



1. Using wheel chocks, secure the front of the vehicle. Secure the rear of the vehicle by using jack stands on the frame in front of the rear-end and behind the rear-end.

2. Using a die-grinder, cut off the factory welds around the factory bump stop, so that the mount can be removed. Next, remove the factory ABS clip.

3. Make sure you have determined the correct direction that the c-notch piece installs. The rear section will taper downward on both sides.



4. Cut out the paper template that was include and fold on the "bend" lines. The "V" notch on the top side should be centered with the stock bed rail. **\*The "V" notch is a locating point for vehicles with a McGaughy's brand flip kit. If your vehicle does not have our brand flip kit, then double check to be sure the axle is centered in the c-notch. DOUBLE CHECK THE LOCATION BEFORE CUTTING!**

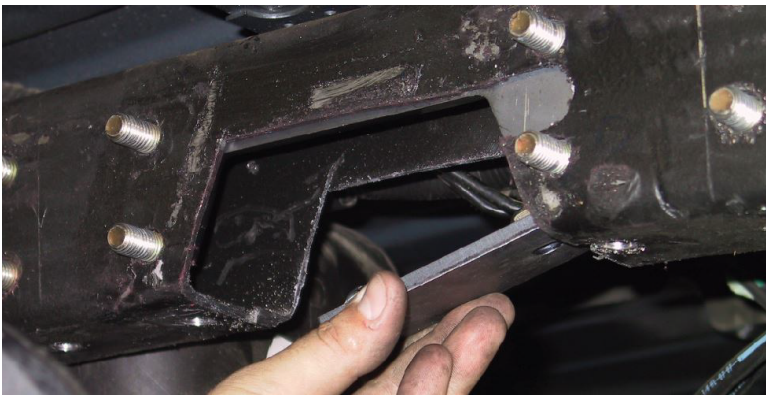
5. Make sure paper template is secure. Trace c-section and cut out using a sawzall. **\*Make sure frame is clear of all wires, clips, etc. You may have to move brake lines up and out of the way.**

6. Once the frame is cut, clamp c-notch up against the frame. Make sure it is secure and cannot move.

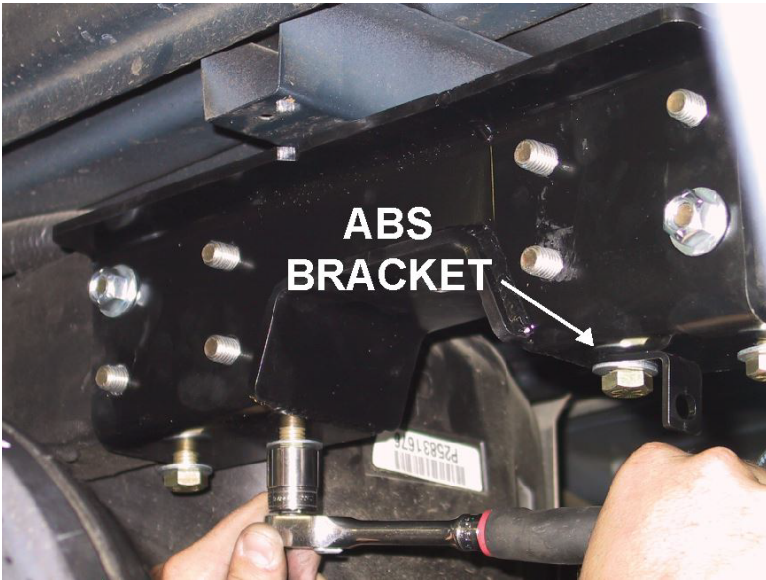
7. Mark and drill the 8 holes on the side of the frame and the 4 holes on the bottom. **\*Do not drill through both sides of the frame. Only drill through the outer wall of the frame.**

8. Remove the outer c-notch plate from the frame. Install the inner c-notch piece with the welded studs inside the frame.

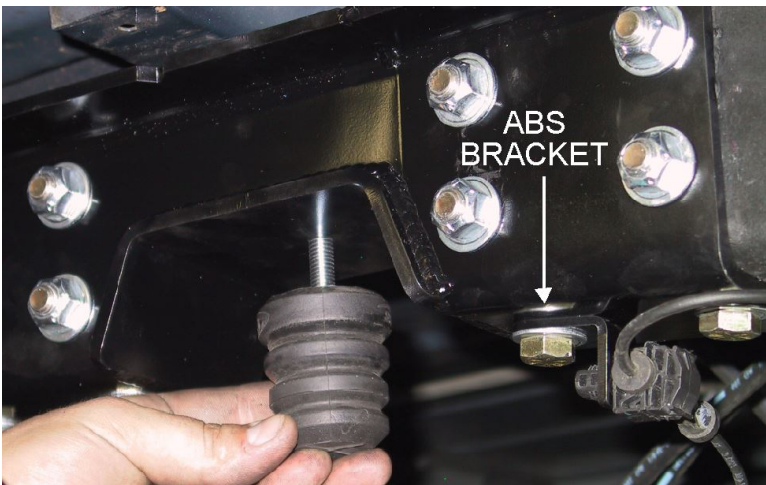




**9. Make sure the studs are facing out through the frame. Now install the two small plates inside the frame with the nuts facing up. Make sure the nuts are lined up with the holes you drilled earlier.**



**10. Now install the outer c-notch on the outside of the frame. Be sure to install and tighten the four bottom bolts first. Make sure you install the ABS bracket on the bolt at the rear of the vehicle, closest to the c-section. Use the provided bolts and washers. Torque to 75 ft lbs.**



**11. Now tighten the eight nuts on the side of the frame. Use the provided washers and nuts. Torque to 75 ft lbs. 12. Next, install the new provided bump stop. The new foam bump stop will thread into the c-notch.**

**13. Repeat the steps for the opposite side of the vehicle.**

**14. Once the c-notch is installed. Make sure the brake lines on the rear end have plenty of clearance when the axle travels to its furthest point up into the c-notch. Make sure brake lines will not rub on the c-notch or anything else.**

**\*NOTE: Depending on your exhaust, you may need to re-route your rear exhaust pipe.**