

## CARRIDGES

### S1 SINGLE CARRIDGES



- One of the industry's most aggressively priced stationary cartridges
- Easy cartridge installation
- Stationary multiple spring design
- Springs isolated from product
- Hydraulically balanced design
- Flush connection standard
- Vent and Drain connections upon request
- Big Bore gland alternatives
- User friendly setting clips

### D2PR DOUBLE CARRIDGES



- For critical, toxic and non-lubricating fluids
- Pumping ring standard
- Stationary multiple spring cartridge design
- Easy cartridge installation
- ANSI pump-compatible
- Springs protected from the product
- Compensates for pressure reversals
- Inboard silicon carbide vs. silicon carbide face combination is standard
- The industry's only double cartridge seal with three identical monolithic silicon carbide faces

## WELDED METAL BELLOWS



- WB 400:**  
Retainer: 316 SS; Core: Hast C; Hub: 316SS
- WB 450:**  
Retainer: 316 SS; Core: AM350; Hub: 316SS
- WB 500:**  
Retainer: Hast C; Core: Hast C; Hub: Hast C

- Static "O" ring - no shaft fretting
- Self cleaning plates
- Single piece construction
- No springs to clog
- Balanced design - 300 PSI without modification
- Fits into narrow cross section pumps



- WB 800:**  
Retainer: Alloy 42; Core: Heat Treated AM 350; Hub & Housing : 316SS

- Static Grafoil Packing, No Orings
- Temperatures to 800 deg F
- Self cleaning plates
- No springs to clog
- Balanced design - 300 PSI without modification
- Fits into narrow cross section pumps



### S1WBC CARRIDGE

- Easy cartridge installation
- Static "O" rings - No shaft fretting
- Universal gland design conforms to most common bolt circles
- Fits all ANSI pumps
- Self cleaning plates
- Balanced design - 300 PSI without modification
- Fits into narrow cross section pumps

## MULTI SPRING COMPONENT SEALS



- A9T:**  
PTFE WEDGE DESIGN



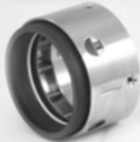
- CP1:**  
ORING DESIGN WITH DRIVE LUGS / SPRINGS OUT OF THE PRODUCT



- ARO:**  
RUGGED ORING DESIGN



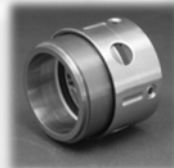
- ACX:**  
OUTSIDE SEAL FOR CORROSIVE APPLICATIONS



- A8T:**  
ORING DESIGN



- CP8:**  
ORING DESIGN WITH MONOLITHIC FACE / SPRINGS OUT OF THE PRODUCT



- A8TB & A9TB**  
BALANCED DESIGN FOR HIGH PRESSURE

## SINGLE SPRING COMPONENT SEALS

- Most common seal designs in the world
- Bellows design helps compensate for face wear
- Seals are Bi-directional
- Torque of pump shaft drives through drive band and notches
- Rugged single spring construction
- Standard on variety of pump designs
- Multiple face and elastomer choices
- Single Oring designs - A157

A1



A21



A1B



A6



A2



A1M



A157



A6A



**ALL STANDARD "PS" NUMBERS AVAILABLE**



# AMERICA'S LARGEST METRIC SEAL INVENTORY

**SINGLE SPRING RUBBER BELLOWS**

ES100      ES120      ES130      METRIC TYPE 21'S

**TAPERED SPRING COMPONENTS**

ES320      ES370      ES378

**ESWW: FLYGT PUMP SEALS**

From 10 mm to 100 mm, Apex Sealing has worked diligently to develop and maintain **the most comprehensive on-hand inventory of metric seals in North America.** These are some of the most common styles that we currently stock.

**MACHINED/ ENGINEERED COMPONENTS**

ES790      ES502      ES58 & ES59

**ESAR      ESNF**

**WATER PUMP SEALS**

*Seals for most foreign pumps are available*

**SEATS**

All common style seats in stock from 0.375" to 4.750"

- Silicon Carbide
- Tungsten Carbide
- Hardened Stainless
- Ceramic
- Carbon

Special Shapes always available

CUP      O-RING GROOVE      L SHAPE      T SHAPE      BLOCK

**METRIC SEATS**      ALL MATERIALS - ALL METRIC SIZES

MS50 Cup Mount      MS60 Cup Mount      MS44 "O" Ring      MS66 "O" Ring      MS99 "O" Ring      MS13 "O" Ring

**SEAL SERVICE CENTER**

- Repair of **all seal styles** regardless of manufacturer
- Precise **attention to detail**, and years of technical seal repair **experience**
- Diverse domestic and international **sourcing network** minimizes costs and shortens lead times
- Reassembly to original **OEM specifications**
- Precision seal **surface lapping** to 2-3 lightbands
- **Ultrasonic** cleaning

**Detailed breakdown and reassembly to like new conditions.**

Pressure tests to assure field success      All brands repaired

**MECHANICAL PACKING**

A-12      A-78L      A-35

X Braided Pure PTFE with Graphite      Lubricated PTFE      Exfoliated Graphite Yarn

- All standard packing styles available
- GFO
- Valve Packing
- Ring Sets
- Cut and Sheet Gaskets

**EZ-Pak** Injectable packing      **AJS** Joint Sealant

**PumpRite, Inc.**  
 sales@pumprite.com  
 www.pumprite.com  
 630-543-7867

