



*Lean, Clean and Green. Lindsay Corporation is committed to developing environmental awareness and implementing sustainable practices to reduce the use of and protect energy, water, and all other resources.*



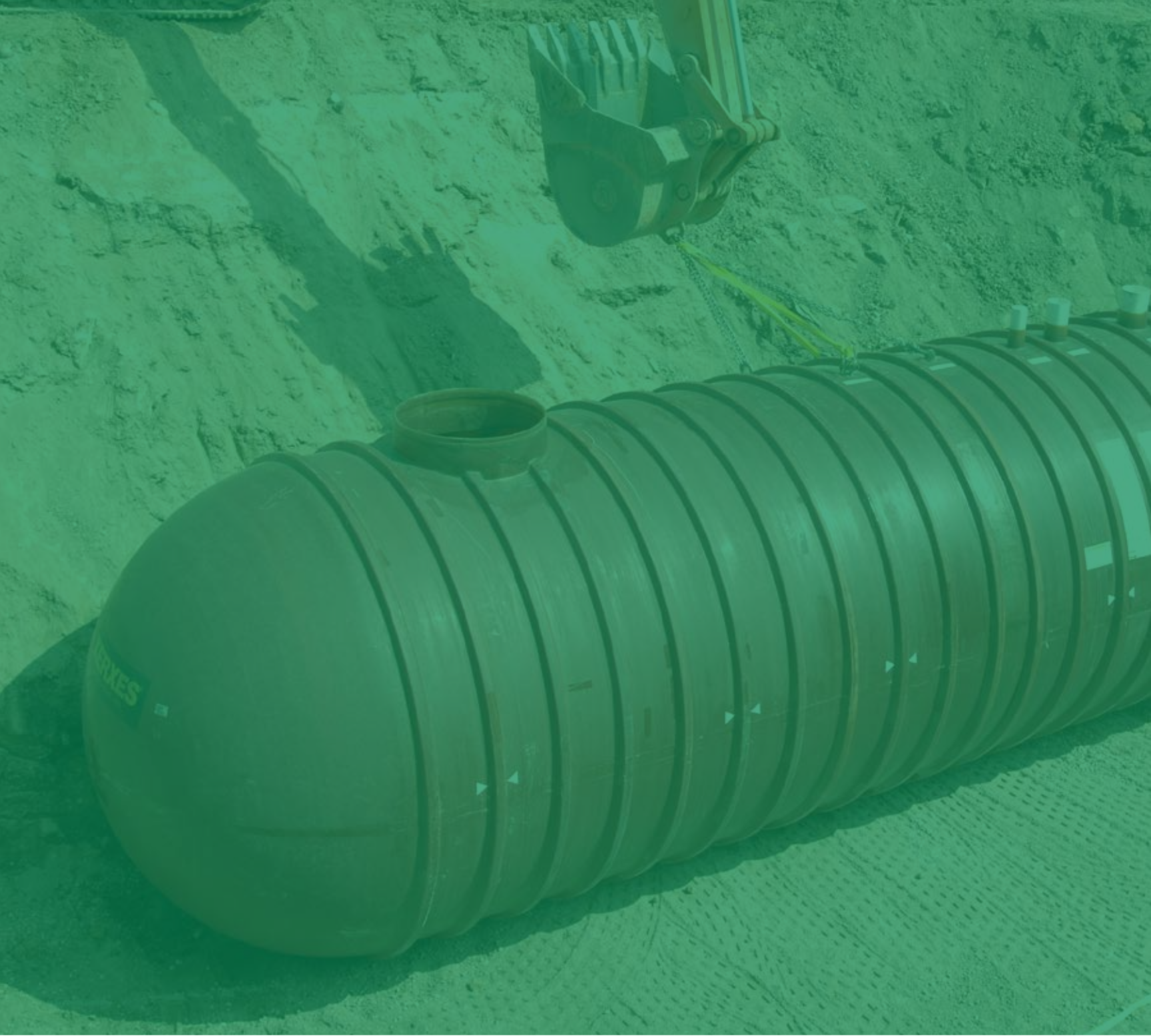
© 2013 Lindsay. All rights reserved.  
Watertronics and FieldNET are registered trademarks of the Lindsay Corporation.  
NFPA 70® and National Electric Code® are registered trademarks of NFPA.



1-800-356-6686 • [www.watertronics.com](http://www.watertronics.com)  
INT'L (+1) 262-367-5000

WA PRODUCT BRO 2013-6





## OUR MISSION

For over 30 years, Watertronics has taken great pride in designing and manufacturing custom pumping solutions for Golf, Landscape, Municipal, and Agricultural use. Our engineering and advanced software applications are what set our systems apart, leading the industry in ease of use, reliability, and energy efficiency.

Through innovative technology, we are constantly working to meet the needs of each market we serve, while also addressing the needs of the planet. Our goal is to provide the most reliable pumping systems available backed by a worldwide network of factory-trained and certified technicians.

From 20 to 20,000 gallons per minute, we have the pump station for you.

## ABOUT LINDSAY CORPORATION

Since 2008, Watertronics has been part of Lindsay, a Nebraska-based global manufacturer of agricultural irrigation products. Lindsay is dedicated to providing intelligent water and plant nutrient management systems that improve productivity and result in the efficient utilization of natural resources.



## COMMITMENT TO SUSTAINABILITY

Our pump stations are designed to maximize energy efficiency by utilizing advanced sequencing controls, precise pressure regulation, and premium-efficiency motors and pumps. Upgrading to a new Watertronics pump station can reduce energy consumption by up to 25% over a traditional system.

Our Sky Harvester division provides custom rainwater harvesting systems that help businesses conserve water by capturing and reusing rainwater, condensate, or parking lot runoff. In many cases, Sky Harvester systems can help companies reduce their potable water needs by up to 80%. Sky Harvester systems, when combined with an efficient irrigation system, are eligible for LEED building credits.



## SUSTAINABLE ORGANIZATIONS

We are proud to be members of the Alliance for Sustainable Built Environments (ASBE), the US Green Building Council (USGBC), the Wisconsin Green Building Association (WGBA), and the Milwaukee Water Council. Many of our employees are EPA Watersense certified.

# THE WATERTRONICS DIFFERENCE

## ADVANCED CONTROLS

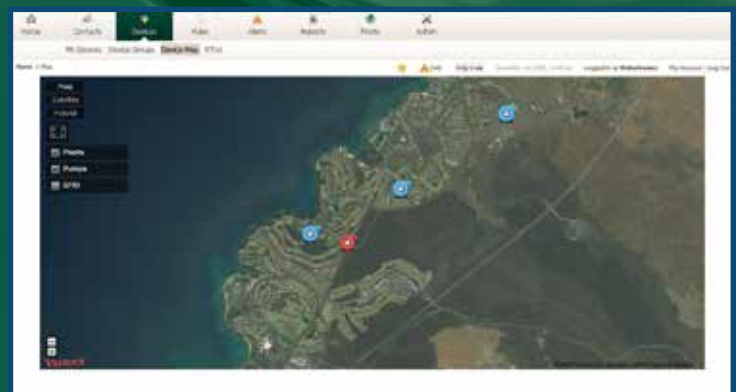
Watertronics controls provide the ability to intuitively manage your pump station in ways that exceed all competition. Our proprietary software offers precision control over pressure, flow, and auxiliary equipment through an easy-to-use touchscreen interface. Watervision 6 remote monitoring software allows access to your pump station from anywhere, anytime and provides unmatched functionality.

## DESIGN & ENGINEERING CAPABILITIES

Our engineering department can design a pumping system to meet any requirements, and provide best-in-class solutions to even the most challenging projects.

## THE ELECTRONIC BUTTERFLY VALVE

Our patented EBV system is an essential part of a reliable, long-lasting pump system. The EBV system regulates pressure, eliminates surges and check valve slam, and prevents motor overload. These functions are in addition to the most widely known benefit of an EBV: it protects your investments by providing 100% backup pressure regulation in the event of a VFD fault.



**Monitoring multiple pump stations helps save time.**



**Powerful analysis of your pump data helps reduce energy costs.**



## WATERVISION 6

IRRIGATION CONTROL AND WATER  
SOURCE MANAGEMENT COME  
TOGETHER IN ONE POWERFUL TOOL.

Watervision 6 is a web-based monitoring and control package that provides remote access to your entire pumping system - anytime, anywhere.

**Save time** by accessing all of your water pump systems in real-time, online, through your Smartphone, laptop, or tablet.

**Save energy & water usage.** Watervision's powerful historical trending tool helps you align your irrigation controls with your pump station for more efficient pump sequencing.

**Save labor.** With your pumping system data at your fingertips, there is no need to manually check your pump stations in the field.

**Save costs.** Your pump station will alert you and your local Service Provider immediately via text & email alerts when anything goes wrong, saving you money on repairs, and resulting downtime.

**Equip your Service Provider** with the tools they need with in-depth and immediate access to pump data for better, faster trouble-shooting, maintenance, and optimization of your pump station.



## DYNAMIC FACTORY TESTING & CERTIFICATION

Watertronics pump stations are fully “test driven” at the factory to ensure that each pump station will perform exactly as promised. We are the only manufacturer that furnishes a comprehensive testing report of key data including pressure, flow, vibration, power factor, pump sequencing, and wire-to-water efficiency at site-specific conditions. We provide this data to both the customer and your local PSN Service Technician, so that all parties have the information necessary to maximize the life of your pump station.

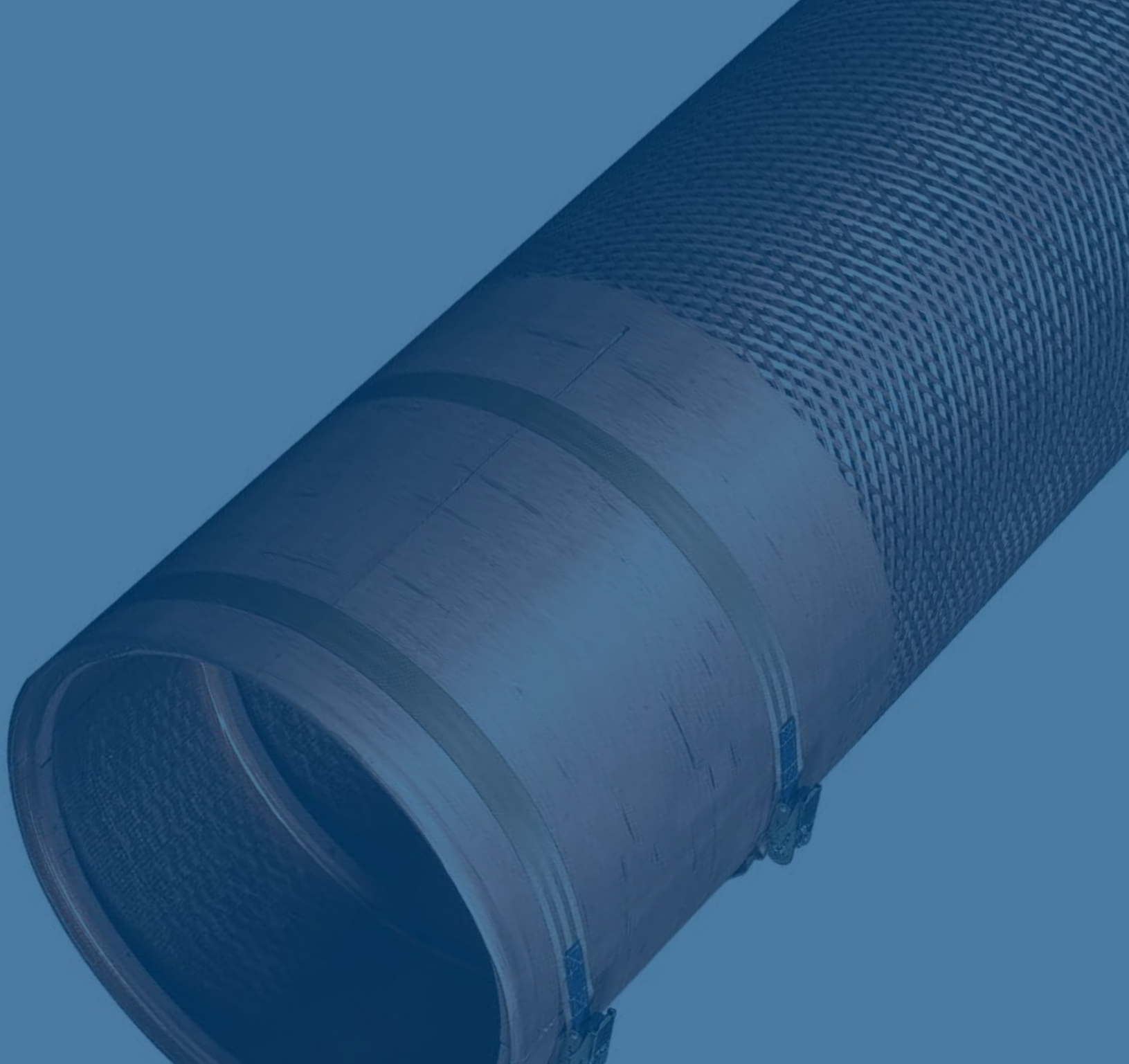
## PUMP SERVICE NETWORK

“Pump Service Network” (PSN) is a worldwide network of factory-trained and certified independent service technicians. Our customers have confidence in their PSN technicians whose skilled and experienced service is available locally 24 hours a day. An expert and caring Watertronics staff supports the PSN partners with full technical backup and customer service.

Through our PSN Service Partner Network, we support over 6,500 pump stations in operation throughout the world.

**[www.PumpServiceNetwork.com](http://www.PumpServiceNetwork.com)**





 **WATERTRONICS™**  
A LINDSAY COMPANY