



5896314

5896314



KINYA

Key Innovation in Your Access

V HOPE VITRECTOMY LITE

sales@kinya.in | +91 97890 41308 | www.kinya.in

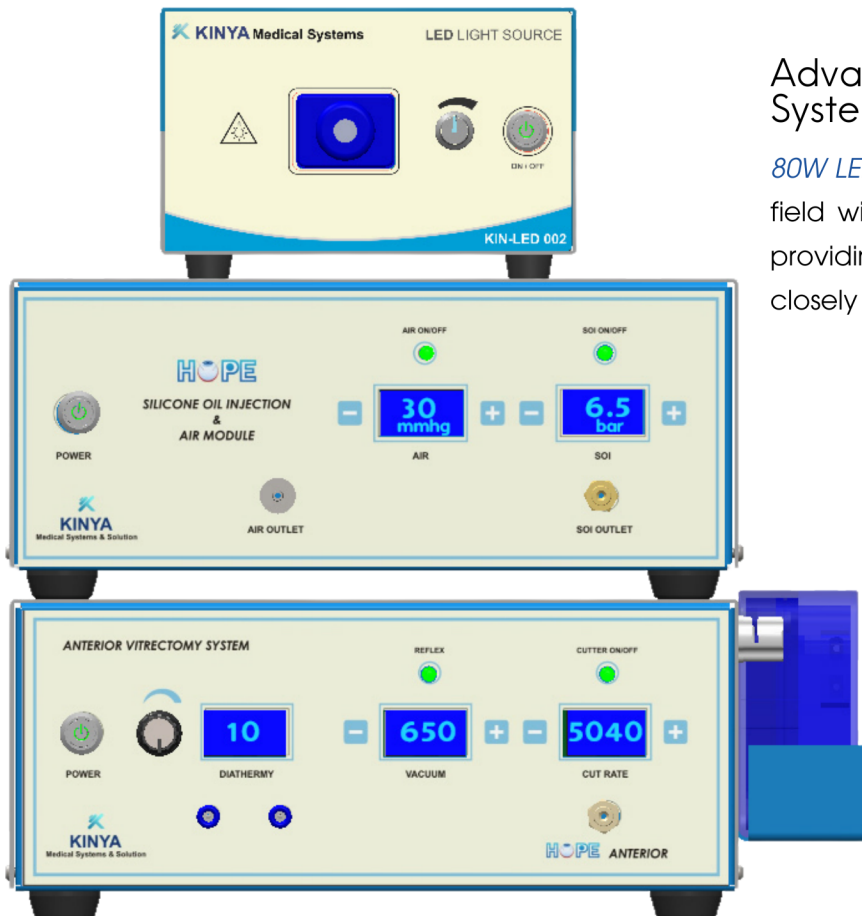
> VITRECTOMY LITE

The V HOPE Vitrectomy LITE system is not just an assembly of tools; it is a cost effective suite of surgical instruments designed to empower ophthalmologists to perform at their best. From intricate vitreous cutting to precise fluid management, this system is the ally that surgeons can rely on for efficient, precise, and successful outcomes.

Innovative Vitrectomy Functionality

Dual-Mode Cutter: Experience exceptional cutting efficiency with a standard cut rate of **6000 cuts per minute**, and a remarkable dual-blade option reaching up to **12,000 cuts per minute** for delicate and precise vitreous removal.

Linear Vacuum Control: Achieve nuanced control over surgical maneuvers with a linear vacuum control, peaking at **650mmHg** for optimal removal of vitreous humor.



Advanced Illumination System

80W LED Light Source: Illuminate the surgical field with a powerful 80W LED light source, providing clear and consistent lighting that closely mimics natural daylight.

Enhanced Fluid Management

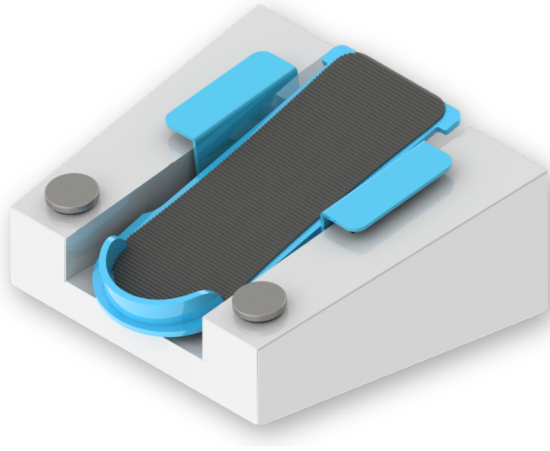
Air Injection: Deliver a stable air pressure up to 200 mmHg for precise fluid-air exchange procedures.

Silicone Oil Injection: Utilize a high-pressure silicone oil injection at 6.5 Bar.

Precise Diathermy and Infusion

Diathermy at 1 MHz: Conduct targeted tissue cauterization with a 1 MHz diathermy, enabling precise hemostasis.

Infusion Activation: Activate infusion effortlessly with a responsive foot pedal, streamlining surgical workflow and allowing for [hands-free operation](#).



Foot Switch

A linear multi functional pedal with six push buttons offers user-friendly operation, allowing surgeons to maintain focus while accessing different functions.

User-Centric Design

Modular System: This flexible, modular system allows for easy customization and scalability according to surgical needs and preferences.

Automatic Draining Cassette: Simplify post-operative cleanup with an automatic draining cassette, ensuring a hassle-free and efficient turnover between surgeries.

Specifications

- Power Supply: 100 - 240V
- Max Power Consumption: 600W
- Input Pressure: 7 - 8 bar
- Dimensions: 421 x 421 x 210 mm
- Weight: 32 Kg





KINYA

Key Innovation in your Access



No:46,
Ranga Rice Mill Building, Big Street,
Nandivaram, Guduvanchery,
Chengalpattu Dist. TN - 603202

Plot No.55,
Mahalakshmi Nagar Ext-7,
Nandivaram, Guduvanchery,
Chennai, TN - 603202



+91 97890 41308
sales@kinya.in
kinya.in

**The contents of the brochure may differ from the current status of approval of the product or service offered. Please contact our representatives for more information. Subject to changes in design and scope of delivery and due to ongoing technical development.