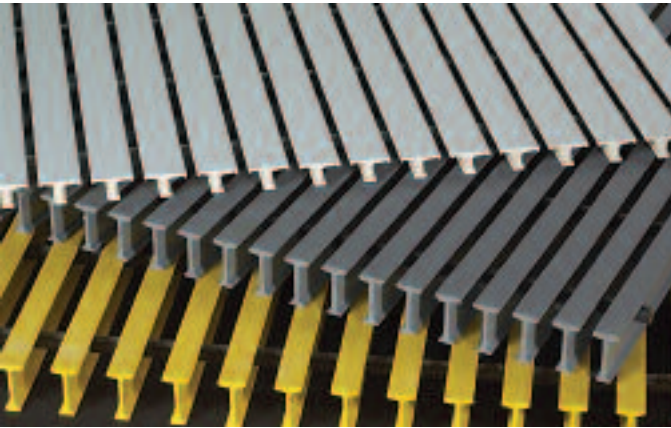




AIN Plastics carries the complete line of Strongwell engineered structural systems for enhanced durability, safety, and service life in harsh environments.

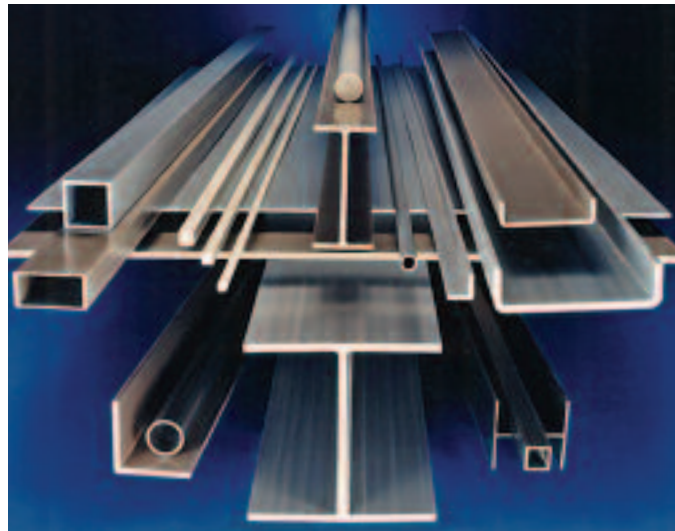


**DURAGRID**® custom grid or grating systems are designed to accommodate specific applications that cannot effectively be met by a standard fiberglass grating. DURAGRID® offers the customer options such as selection of open space, bar shape, cross-rod placement, custom fabrication, custom resin or color.

**DURADEK**® is a standard pultruded grating product. It is available with individual bearing bars in either 1 or 1-1/2 inch "I" shapes or a 2 inch "T" shape. DURADEK® is a flame retardant product utilizing a polyester resin. The bearing bars use both longitudinal (glass roving) and multidirectional (glass mat) reinforcements as well as a synthetic surfacing veil to provide unequaled corrosion resistance.



**SAFRAIL**™ fiberglass handrails are industrial/commercial railing systems for stair rails, platform/walkway handrails, and guardrails. SAFRAIL™ systems are fabricated from pultruded fiberglass components produced by Strongwell and molded thermoplastic connections

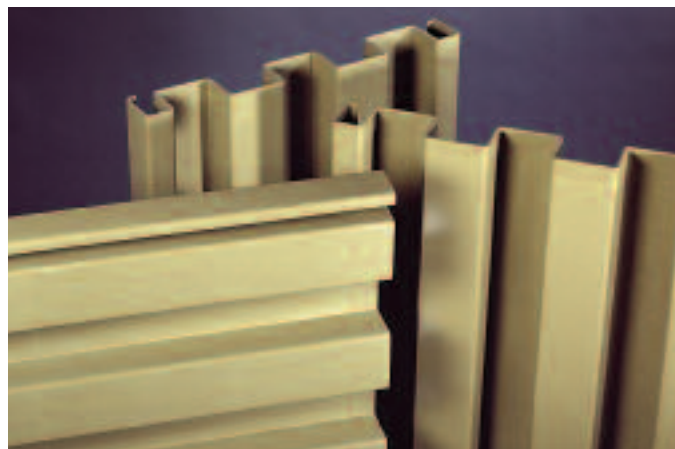


**EXTREN**® structural shapes feature a proprietary combination of fiberglass reinforcements and thermosetting polyester or vinyl ester resin systems. They are produced in more than 100 standard shapes and all shapes have a surface veil to protect against glass fibers penetrating the resin surface in service and to increase corrosion and UV resistance. EXTREN® is offered in three series designed for different environments and applications.

**SERIES 500** — An all-purpose series utilizing an isophthalic polyester resin system with a UV inhibitor. Color: Olive Green

**SERIES 525** — An all-purpose series utilizing a fire retardant isophthalic polyester resin system with a UV inhibitor. Color: Slate Gray (plus certain handrail and fixed ladder components in yellow)

**SERIES 625** — A premium series both fire retardant and highly corrosion resistant utilizing a vinyl ester resin system with a UV inhibitor. Color: Beige



**Strongwell's** fiberglass baffle systems can be used in municipal and industrial water and wastewater systems, aeration and contact chambers, and retention basins. These lightweight panels are easily installed and are ideal for retrofitting into existing systems. They are also cost effective because they have a much longer life cycle as compared to wood, concrete and other traditional materials that are subject to rot and corrosion.

# AIN Plastics is your Full-Line Materials Distributor

- |  |  |   |
|--|--|---|
| <ul style="list-style-type: none"> <li>Acetal</li> <li>Acetron®</li> <li>Acrylite® Acrylic Sheet</li> <li>Aluminum</li> <li>Anaerobics/Threadlockers</li> <li>Brass</li> <li>Bronze</li> <li>CPVC</li> <li>Cyanacrolate Adhesives</li> <li>Delrin®</li> <li>Devcon®</li> <li>Duradek®</li> <li>Duragrid®</li> <li>Epoxy Adhesives</li> <li>Extren®</li> <li>Fiberglass</li> <li>Fiberglass Baffle Panels</li> <li>Fillers and Repair Pastes</li> <li>GPO -1,-2,-3</li> <li>High Density Polyethylene</li> <li>Kynar®</li> <li>Makrolon® Polycarbonate Sheet</li> <li>Methacrylate Adhesives</li> <li>Micarta®</li> </ul> |  | <ul style="list-style-type: none"> <li>Mirror</li> <li>Nylatron®</li> <li>Nylon</li> <li>Phenolics</li> <li>Polycarbonate</li> <li>Polypropylene</li> <li>Polyurethane</li> <li>Proteus® Co-Polymer</li> <li>Proteus® Homopolymer</li> <li>PTFE</li> <li>PVC</li> <li>PVDF</li> <li>Safety Mirrors</li> <li>Safrail®</li> <li>Seelye® Welders and Welding Rod</li> <li>Stainless Steel</li> <li>Structural Adhesives</li> <li>Teflon®</li> <li>Tivar® 1000</li> <li>Tivar® Recycled</li> <li>Tygon® Tubing</li> <li>UHMW</li> <li>Vinyl Tube</li> </ul> |
|--|--|---|

*One number to call for the best names in the plastic shapes industry...*



Toll free in North America:  
**(800) 664-0267**

www.ainplastics.com

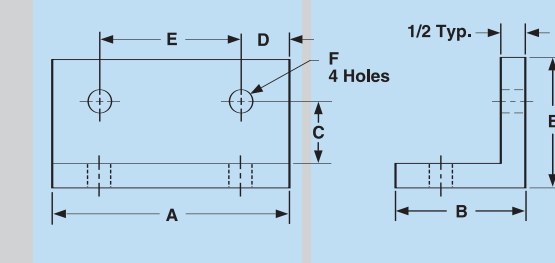
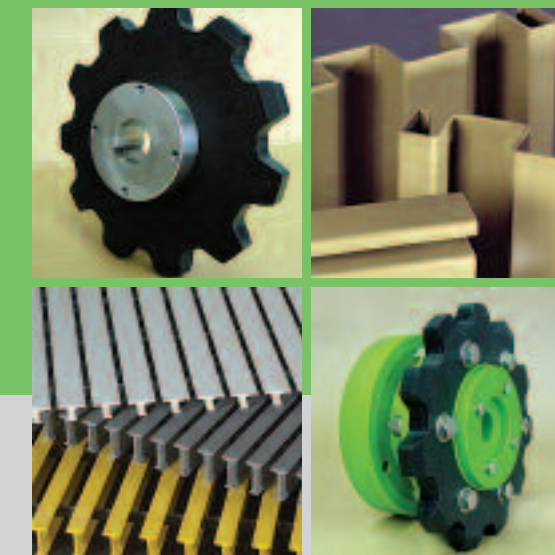
A ThyssenKrupp Materials NA company  
**AIN Plastics**  
Corporate Headquarters  
22355 West Eleven Mile Road • Southfield, MI 48034  
Phone: (248) 233-5900 • Fax: (248) 233-5999



ThyssenKrupp Materials NA, Inc.

AIN Plastics • Copper and Brass Sales • Ken-Mac Metals • TMX Aerospace • ThyssenKrupp Steel Services • TKX Logistics

# Plastic Solutions for Wastewater Treatment



A ThyssenKrupp Materials NA company  
**AIN Plastics**



ThyssenKrupp

## Plastic Solutions for Wastewater Treatment

For more than 30 years, AIN Plastics has offered customers in North America quality products, competitive pricing, and an unsurpassed level of service by supplying industrial plastic shapes from the world's leading manufacturers including: Poly Hi Solidur, Strongwell, Quadrant EPP, Norplex Micarta, Saint-Gobain, and many other.

By combining our expertise in the plastics industry with the nationwide logistics network of the ThyssenKrupp Materials NA group, we provide this broad array of plastics inventory, complemented by expert sales and applications assistance, to industrial plastics users all across the nation. So make the call today and discover firsthand what the AIN Advantage can do for you.

Your call to AIN Plastics is toll free from anywhere in North America:

**(800) 664-0267**

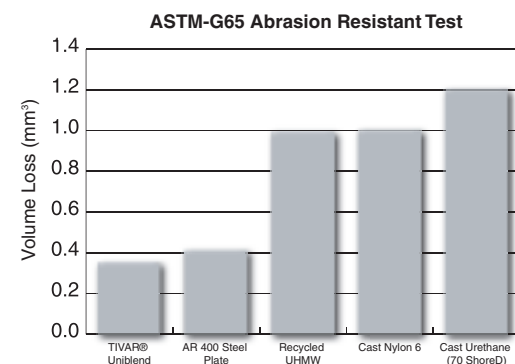


### Plastic Components Deliver Increased Performance in Tough Environments

- Abrasion, corrosion, impact, and moisture resistance
- Won't rust or seize
- No lubrication needed
- Available in food grade and NSF-compliant materials
- Handles a full working load of corresponding chain
- Extended chain life
- Easy installation
- Reduced maintenance costs and downtime

### Turnkey Machining and Fabrication Services

At AIN Plastics, we offer customers access to a complete array of value-added processing and fabricating services. From prototype to production runs, we have the equipment to handle all your machining needs. AIN Plastics customers save both time and money by having these first stage processing steps completed and delivered to their door.



# Treatment Components

All of our Water and Wastewater Treatment Components Feature Poly Hi Solidur UHMW-PE Engineered Polymers.

### Split Combination Dish Sprocket

- Iron Body
- Replaceable Tivar® UHMW segmented teeth
- Available in all polymers



### Drive Sprocket

- Stainless Steel Hub
- Replaceable Tivar® UHMW Segmented teeth



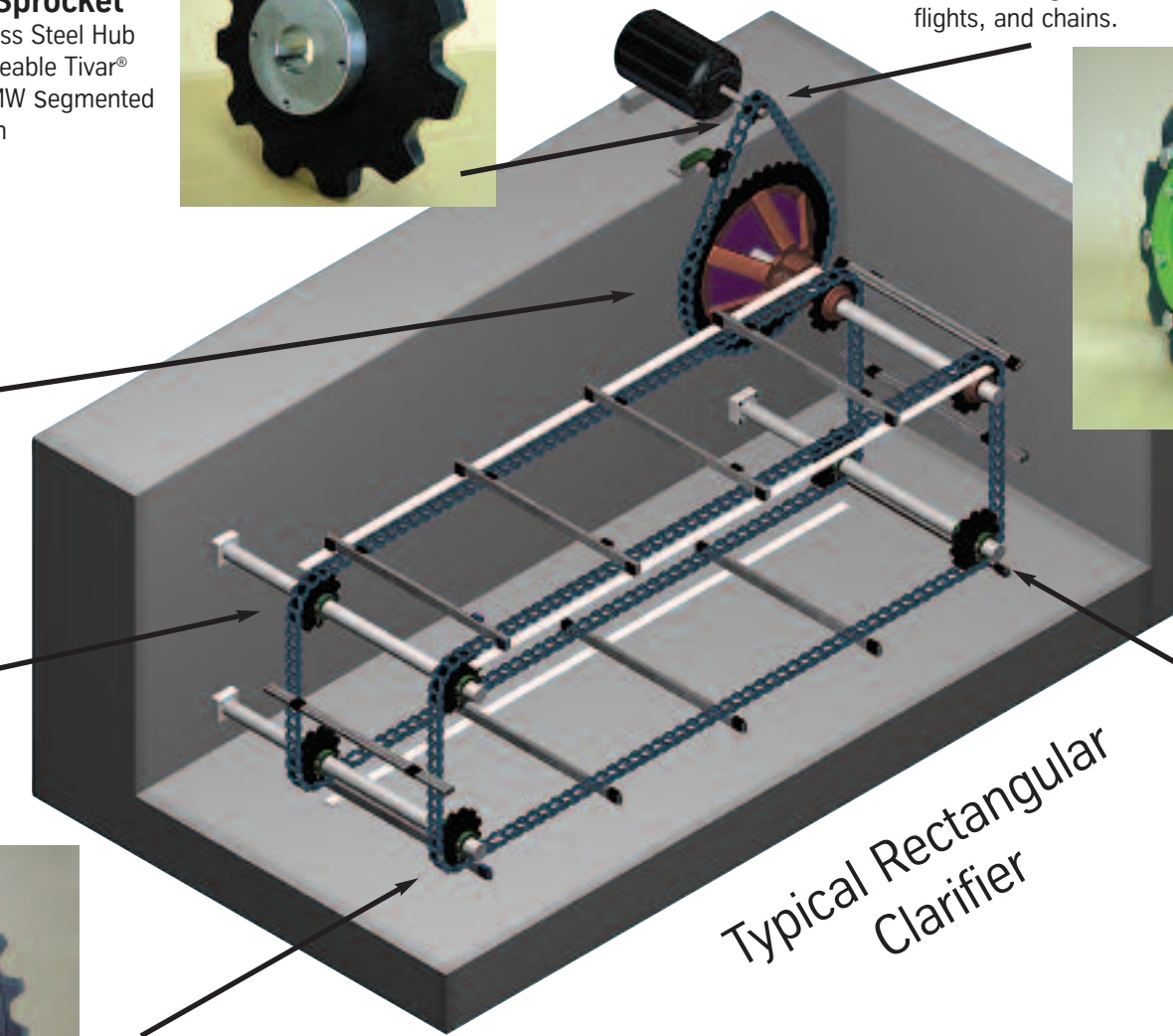
### Split Sprockets

- Available with all polymeric, stainless steel, or iron hubs.
- Hunting tooth design — tooth comes in contact with chain every other rotation



### Split Chain Saver w/Static Shaft Bushing

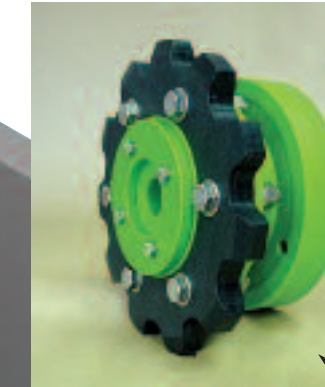
- Manufactured from Tivar® Uniblend and oil-filled nylon
- Eliminate wall bearings
- Provide shaft protection and low-friction surface for sprocket rotation



Typical Rectangular Clarifier

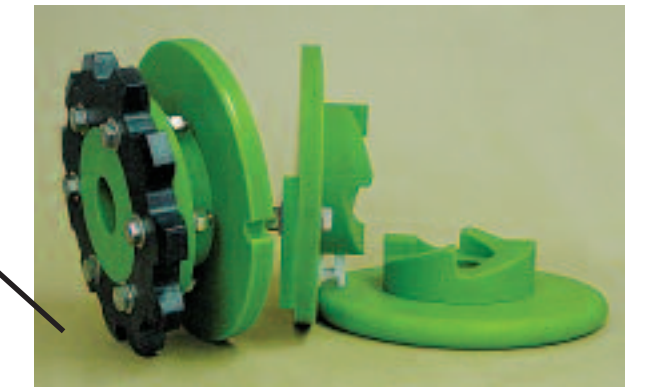
### Shear Pin

- Designed to shear replaceable pin when torque exceeds set range
- Prevents damage to collectors, flights, and chains.



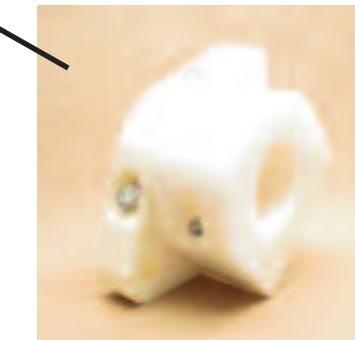
### Jaw Clutch Shear Pin

- Replace shear pin without removing chain or sprocket
- Available in right hand or left hand configuration



### Split-Peak Cap-Wall Bearing

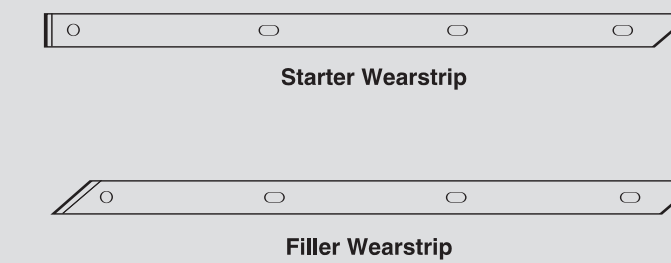
- Static load capacity over 4.5 tons
- Weighs only 14.5 pounds
- Manufactured from food-grade materials
- Use with all polymer shaft protectors to protect expensive stainless shafting



## Additional Components

### Wearstrip

- Manufactured from Tivar® Uniblend
- Zero water absorption
- Low coefficient of friction
- Unmatched abrasion and chemical resistance



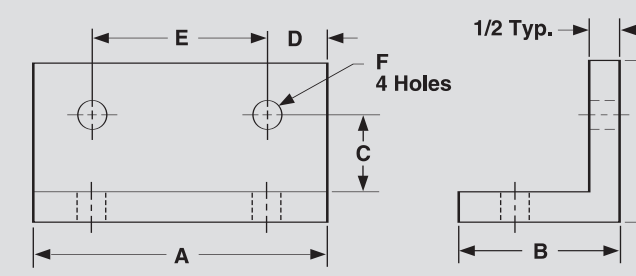
### Set Collar

- Manufactured from Tivar® Uniblend and oil-filled cast nylon
- Setscrew standard to prevent horizontal movement on shaft
- Collars supplied with stainless steel mounting hardware



### Wearshoes

- Manufactured from Tivar® Uniblend
- Zero water absorption
- Low coefficient of friction
- Unmatched abrasion and chemical resistance



UHMW-PE Carrying Wearshoe

AIN Plastics also Supplies and Fabricates these Industrial Plastics...

- Acetal • CPVC (Chlorinated PVC)
- HDPE (High Density Polyethylene) • Nylon
- Polypropylene • PTFE (Teflon)
- PVC • PVDF

