



The "Jill 2" Plan

Plan # 25-66

Living Down: 1876 sq. ft.

Living up: 625 sq. ft.

Total living area: 2748 sq. ft.

Hearthroom

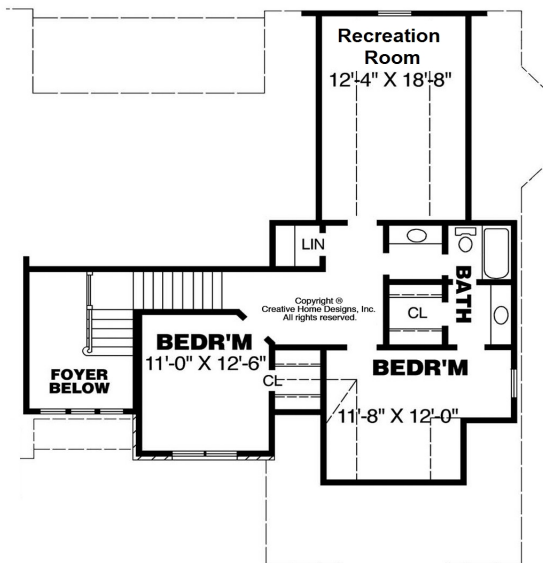
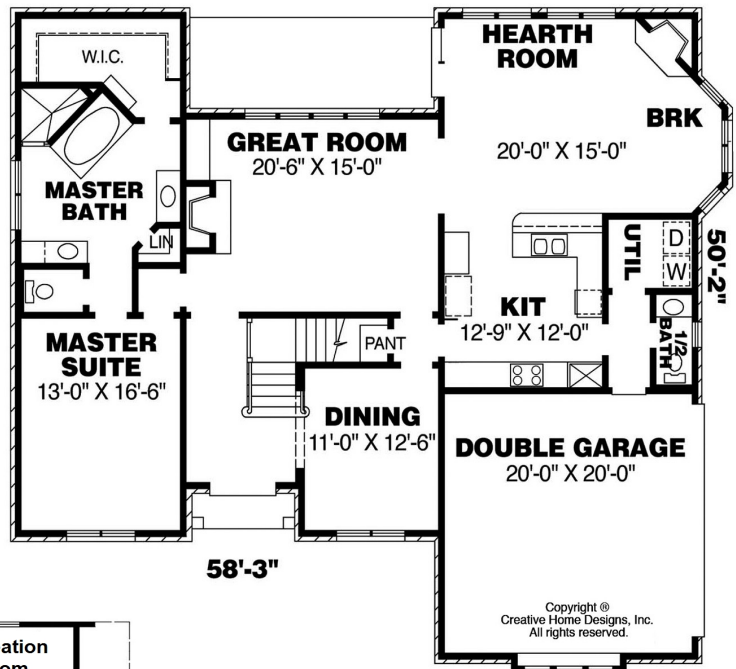
3 Bedrooms

2 Bathrooms, 1 Half Baths

Recreation room up could be made
In to a 4th bedroom.

width 58'-3"

depth 50'-2"



The "Jill 2" Plan

Wooten Oaks

CALL JOHN

901-412-6991

WOOTENOAKS.COM