



Sport-Tek® Ladies PosiCharge® Electric Heather Colorblock 1/4-Zip Pullover. LST397



This lightweight pullover locks in color, wicks moisture, resists snags and has an amped up colorblock look.

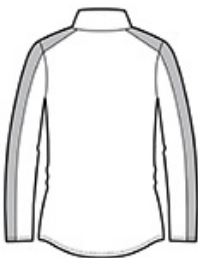
- 4.1-ounce, 100% polyester yarn-dyed jersey with PosiCharge technology (Electric Heather)
- 4.7-ounce, 100% polyester jersey with PosiCharge technology (solid)
- Gently contoured silhouette
- Removable tag for comfort and relabeling
- Cadet collar
- Reverse coil zipper
- Colorblock on shoulders and sleeves
- Princess seams
- Set-in sleeves
- Open cuffs and hem
- Drop tail hem

CARE INSTRUCTIONS

Machine wash cold with like colors. Do not bleach. Tumble dry low. Remove promptly. Cool iron if needed.do not use fabric softener. Do not dry clean.

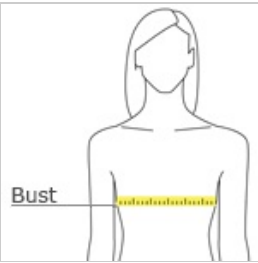


front



back

HOW TO MEASURE








**BUST**  
With arms down at sides, measure around the upper body, under arms and around the fullest part of the bust.

SIZE CHART

	XS	S	M	L	XL	3XL	4XL
Size	2	4/6	8/10	12/14	16/18	24/26	28/30
Bust	32-34	35-36	37-38	39-41	42-44	48-51	52-55

COLOR INFORMATION

				
Black Electric/ Black PMS NTR BLACK C	Deep Red Electric/ Deep Red PMS 201C	Grey-Black Electric/ Black PMS NTR BLACK C	True Navy Electric/ True Navy PMS 533C	True Royal Electric/ True Royal PMS 7686C