

1 $\frac{3}{8}$ " DECORATIVE METAL COMPONENTS



Tip & Match



Kirsch
re

Updated January, 2007

MIX & MATCH®

End Caps and Finials

73307

753

End Cap



006



743



747



73307

End Cap

Size: 1¼" w x ¾" l

Finishes: 006, 743, 747, 753

Metal

73295

747

Ball



006



743



753



73295

Ball Finial

Size: 3½" w x 3½" h

Finishes: 006, 743, 747, 753

Metal

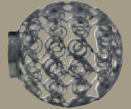
73280

743

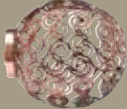
Swirl Ball



006



747



753



73280

Swirl Ball Finial

Size: 3½" w x 3½" h

Finishes: 006, 743, 747, 753

Metal

73283

006

Faucet



753



73283

Faucet Finial

Size: 2¼" w x 2¼" h

Finishes: 006, 753

Metal

73284

006

Black Leather Cube



73284

Black Leather Cube Finial

Size: 2½" w x 2½" h

Finish: 006

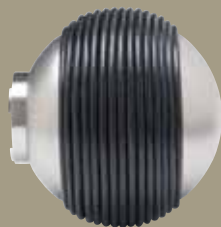
Leather

*Color photography in print may vary slightly from actual finished product.
Please confirm your color selection with the Kirsch Swatch Card or Kirsch Display Board.

MIX & MATCH® Finials

73288 753

Leather Wrap



73288

Leather Wrap Finial

Size: 3½" w x 3½" h

Finish: 753

Metal/Leather

73296 999

Checkered Wooden Ball



73296

Checkered Wooden Ball Finial

Size: 3½" w x 3½" h

Finish: 999

Wood

73290 999

Frosted Swirl



73290

Frosted Swirl Finial

Size: 3½" w x 3½" h

Finish: 999

Glass

73282 999

Mosaic Mother of Pearl



73282

Mosaic Mother of Pearl Finial

Size: 3½" w x 3½" h

Finish: 999

Mother of Pearl

73291 999

Rattan Ball



73291

Rattan Ball Finial

Size: 3½" w x 3½" h

Finish: 999

Resin

73293 999

Mosaic Tile



73293

Mosaic Tile Finial

Size: 3½" w x 3½" h

Finish: 999

Resin

73294 743

Burnished Brass
Crackled Glass



73294

Burnished Brass Crackled Glass
Finial

Size: 3½" w x 3½" h

Finish: 743

Glass

73292 999

Mahogany Studded
Ball



73292

Mahogany Studded Ball Finial

Size: 3½" w x 3½" h

Finish: 999

Wood/Metal

50795 006

Black Crackled Glass



50795

Black Crackled Glass Finial

Size: 3½" w x 3½" h

Finish: 006

Glass

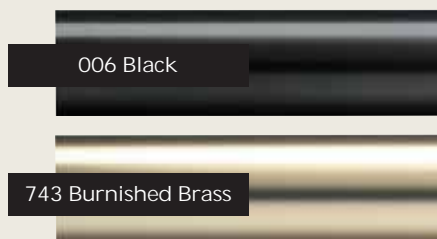
*The Mix & Match® Collection includes the following finishes:
006 Black, 743 Burnished Brass, 747 Copper, 753 Brushed Pewter, 999 Alternative Media.*

MIX & MATCH®

Metal Poles

*Color photography in print may vary slightly from actual finished product. Please confirm your color selection with the Kirsch Swatch Card or Kirsch Display Board.

Pole Finishes



Telescoping

73297 28" - 48" Pole
73298 48" - 84" Pole
73299 84" - 120" Pole

Fixed Width

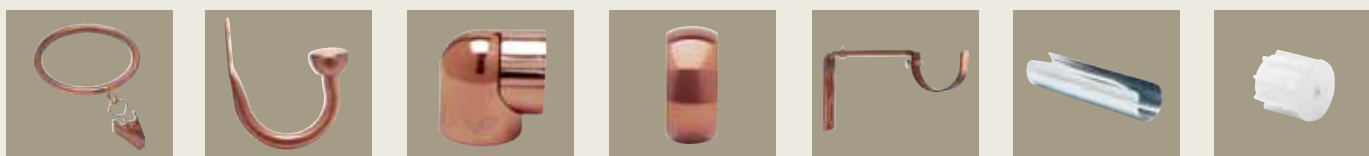
73303 8' Pole

Pole Finishes



MIX & MATCH®

Accessories



Clip Ring with Eyelet

Holdback Arm

Swivel Socket

Collar

Bracket

Rod Splice

Finial Plug

NUMBER	PRODUCT	FINISHES	
73305	Clip Rings with Eyelet	006, 743, 747, 753	Can be used with eyelet or detachable clip
73306	Holdback Arm	006, 743, 747, 753	Endcap is included or can be used with 1 3/8" finials
73300	Metal Swivel Socket	006, 743, 747, 753	Can be used for corner or bay windows
73301	Collars - Bulk	006, 743, 747, 753	For pole sets, finial collar is included; for fixed width pole, collar NOT included. Can be purchased separately.
73302	Brackets - Bulk	006, 743, 747, 753	Clearance 3"-4 1/2", Return 3 3/4"-5 1/2"
73304	Rod Splice - Bulk	061	Connects fixed width poles
73405	Finial Plug - Bulk	058	For fixed width poles, finial plug must be purchased separately

Create your signature style with our new Mix & Match collection, available in four designer finishes and 20 lush alternative media finials. The finials can be paired with any of the Mix & Match collars and 1 3/8" diameter poles; or choose between **Wood Trends™** and **Studio Coordinates®** poles to add additional style combinations.

Step 1

Choose alternative media finial.



Step 2

Select from four designer finish collars.



Step 3

Complete the look with any Kirsch 1 3/8" pole



Kirsch Window Fashions ©2007
4110 Premier Drive, High Point, NC 27265
Phone: 1.800.225.1988 • Fax: 1.800.545.2325
www.kirsch.com

A **NewellRubbermaid™** Company

Featured on the cover: Kirsch® Mix and Match drapery hardware in Brushed Pewter finish with Mosaic Mother of Pearl finials and Kirsch Cellular Shade 96" Atlantis Woven Collection in Toffee.

F0828005