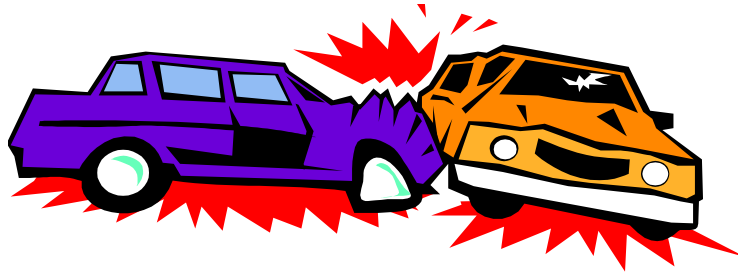


Clearwater County

Fair

Demolition Derby 2016



Power Wheels Rules

1. Any regular electric Power Wheel is allowed. No 4 wheeler type vehicles allowed. Child's legs must be in a compartment. Ride in not ride on!
2. Kids 4-10 years of age may participate. There are two age groups if there are enough participants (otherwise only one): 4-6 and 7-10.
3. Helmets must be worn.
4. The vehicle is allowed to have UP TO a 12 volt lawn mower battery, which cannot be mounted in the passenger seat and battery must be secured and sealed away from the child.
5. All doors and tailgates must be strapped shut. No sharp edges. Use zip ties or duct tape or other flexible product for making them stay shut.
6. Tires may be covered in duct tape to prevent them from breaking.
7. Motor must remain stock. The only modification you may use and will be allowed is using a lawn mower battery.
8. Decorative changes can be made to the Power Wheel to make it look like a derby car, however, there can be no reinforcement to the power wheel. Changes and additions are only decorative-- example: header pipes sticking up, painting the car, etc.
9. At all times remember that this is for kids! Don't add something that could cause them not to be in the derby. You could have a disappointed child if not allowed to run.
10. Call if you have questions. AJ at 218-556-5552