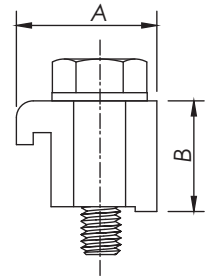


ISO Hardware & Seals

ISO-K SINGLE CLAW

*Material: SS 304

*Bolt Thread: Metric

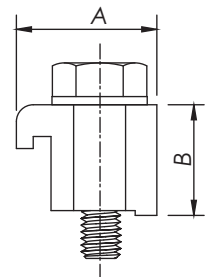


Part Number	Size	A	B	Thread Size
ISOK-SC-63100M	ISO63-ISO100	24.10	22.50	M8 x 35L
ISOK-SC-160250M	ISO160-ISO250	29.20	23.00	M10 x 35L
ISOK-SC-320500M	ISO320-ISO500	30.00	30.00	M12 x 50L
ISOK-SC-630M	ISO630	37.00	41.50	M12 x 50L

ISO-K SINGLE CLAW

*Material: Aluminum

*Bolt Thread: Metric or Inch size

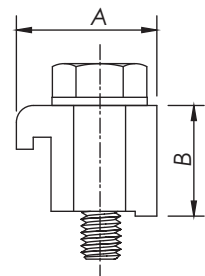


Part Number	Size	A	B	Thread Size
ISOK-SC-63100M-AL	ISO63-ISO100	24.10	22.50	M8 x 35L
ISOK-SC-63100-AL	ISO63-ISO100	24.10	22.50	5/16-18x38L
ISOK-SC-160250M-AL	ISO160-ISO250	27.50	23.50	M10 x 35L
ISOK-SC-160250-AL	ISO160-ISO250	27.50	23.50	5/16-18x38L
ISOK-SC-320500M-AL	ISO320-ISO500	30.00	30.00	M12x50L
ISOK-SC-320500-AL	ISO320-ISO500	30.00	30.00	7/16-14x50L

ISO-K SINGLE CLAW

*Bolt Thread: Metric

*Material: Zinc Plated Steel



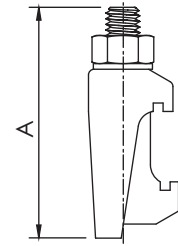
Part Number	Size	A	B	Thread Size
ISOK-SC-63100M-ZP	ISO63-ISO100	24.10	22.50	M8 x 35L
ISOK-SC-160250M-ZP	ISO160-ISO250	27.50	23.50	M10 x 35L
ISOK-SC-320500M-ZP	ISO320-ISO500	30.00	30.00	M12 x 50L

ISO
NW

ISO Hardware & Seals

ISO-K DOUBLE CLAW

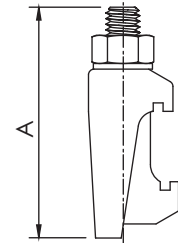
*Material: SS 304



Part Number	Size	A	Bolt Size
ISOK-DC-63250M	ISO63-ISO250	60.00	M10
ISOK-DC-320500M	ISO320-ISO500	76.50	M12

ISO-K DOUBLE CLAW

*Material: Zinc Plated Steel

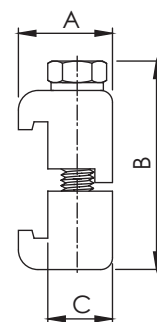


Part Number	Size	A	Bolt Size
ISOK-DC-63250M-ZP	ISO63-ISO250	60.00	M10
ISOK-DC-320500M-ZP	ISO320-ISO500	76.50	M12

ISO-K DOUBLE CLAW

*Material: Aluminum

*Bolt Thread: Metric or Inch size



Part Number	Size	A	B	C	Thread Size
ISOK-DC-63100M-AL	ISO63-ISO100	24.00	50.00	16.50	M8x45L
ISOK-DC-63100-AL	ISO63-ISO100	24.00	50.00	16.50	5/16-18x45L
ISOK-DC-160250M-AL	ISO160-ISO250	27.50	51.60	20.00	M10x45L
ISOK-DC-160250-AL	ISO160-ISO250	27.50	51.60	20.00	5/16-18x45L
ISOK-DC-320500M-AL	ISO320-ISO500	34.00	65.00	26.07	M12x60L

**ISO
NW**