

Hilt Building

15 E. Sumner St. Hartford, WI 53027

Enjoy urban living in the historic Hilt Building located in downtown Hartford. Completely redeveloped luxury apartments available on the 2nd and 3rd floor. Beautiful oak trim and hardwood flooring combined with cream city brick bring this historic building back to its former grandeur.

Amenities for all areas include:

- **Kohler fixtures**
- **High end appliances**
- **Granite counters**
- **Full Sized Washer and Dryer in each unit**
- **Forced Air heat and Air Conditioning**
- **Open concept kitchen and living room**
- **Extra tall 12' ceilings**
- **Video Security system with buzz in entrance**
- **Small pets welcome (landlord approval needed)***
- **Nearby parking available for \$26 per YEAR**
- **Walking distance to Restaurants, Parks and Entertainment**
- **Tenant responsible for Gas and Electric**

Please see back page for layouts

The 2nd floor:

Apt 1

This eastern facing apartment is a spacious 1 bedroom space. With hardwood floors, original wood moldings, exposed cream city brick and tons of natural light you don't want to miss out on this urban living oasis.

1,115 sq ft \$1000 per month

Apt 2

This western facing apartment is a roomy 1 bedroom apartment. Urban living at its finest with original hardwood flooring, original wood moldings, exposed cream city brick and all the modern amenities. Don't miss out on this unique gem.

752 sq ft \$900 per month

Apt 3

A spacious 1 bedroom apartment with a huge bay window looking west over downtown. With a beautiful view of downtown Hartford, original hardwood floors and molding, and exposed cream city brick, this apartment is a must have.

775 sq ft \$950 per month

The 3rd floor:

Apt 4

This elegant 2 bedroom apartment is the epitome of urban living. With a spacious kitchen and breakfast bar, large eastern facing windows for a ton of natural light, a huge bathroom with dual vanity, walk in shower and separate toilet closet, you don't want to miss this one. Original hardwood floors, moldings and claw foot tub make this a space to see. What makes this a perfect urban space is the private roof top deck with views in all directions of the city. Be the envy of all your friends.

1,213 sq ft apartment plus 665 sq ft rooftop deck \$1,550 per month

Apt 5

Urban living with tons of space. This expansive 2 bedroom apartment has fantastic views of the downtown, a huge kitchen with breakfast bar and an area for a dining table. Other amenities include a large bathroom with walk-in shower, original claw foot tub, a dual vanity and separate toilet closet. Design of this space includes original hardwood floors/moldings, eleven foot ceiling and a huge bay window letting in tons of natural light. Master Bedroom features a large walk in closet which will not require you to "downsize" to enjoy your urban space.

1,274 sq ft \$1,325 per month

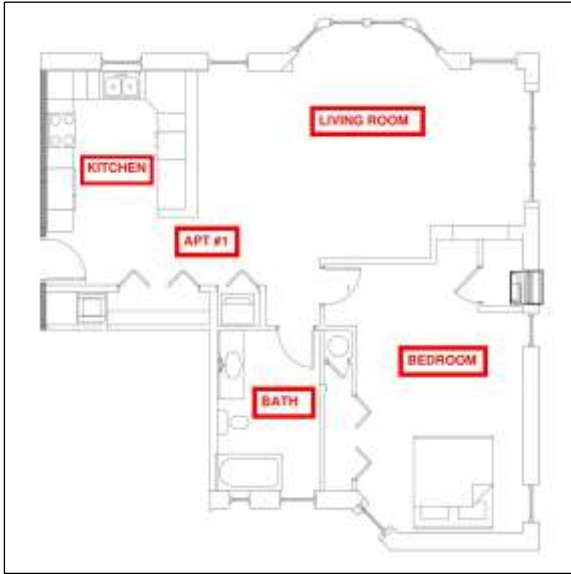
***Small pets welcome with landlord approval- A NONREFUNDABLE pet security deposit equal to one month's rent is necessary PLUS an additional \$50 in rent per month.**

Danny & Wendy Dulak

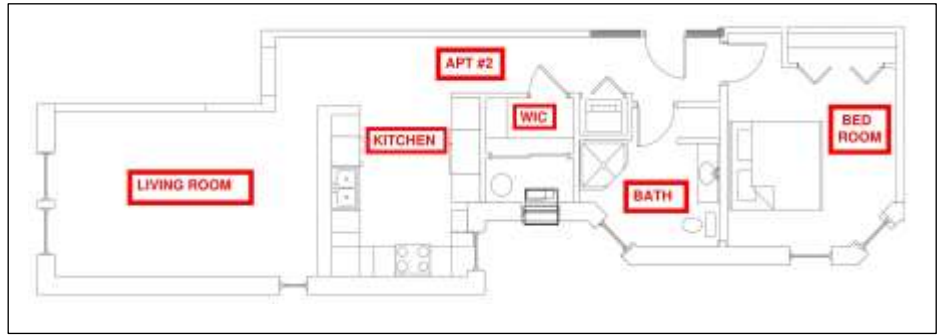
Owners- Second Chance Ventures, LLC

ddulak@2ndchanceventures.com 414-688-7329

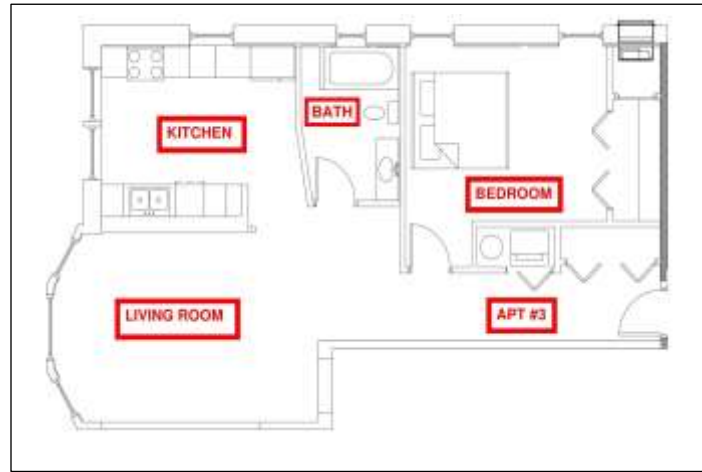
Apartment 1 \$1000/1115 ft²



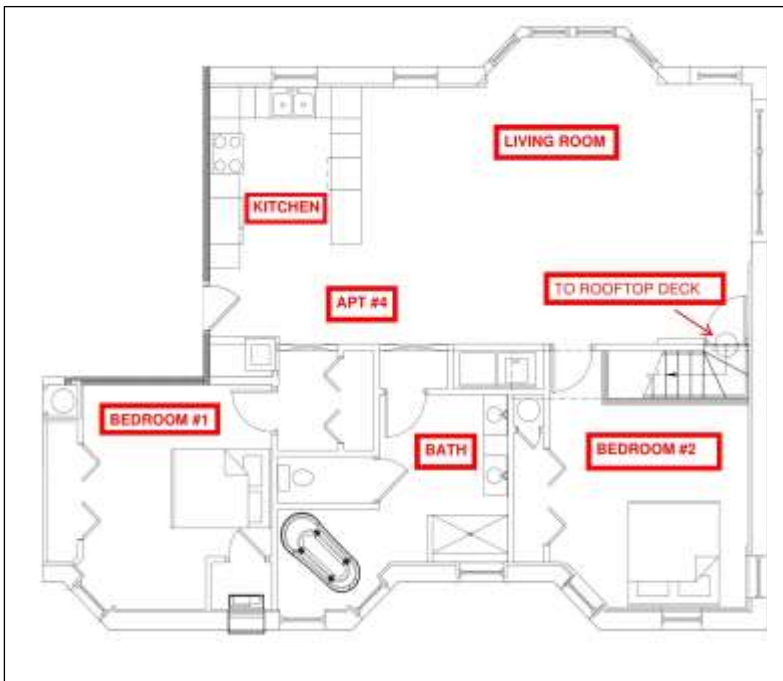
Apartment 2 \$900/752ft²



Apartment 3 \$950/775ft²



Apartment 4 \$1550/1878ft²



Apartment 5 \$1325/1274ft²

