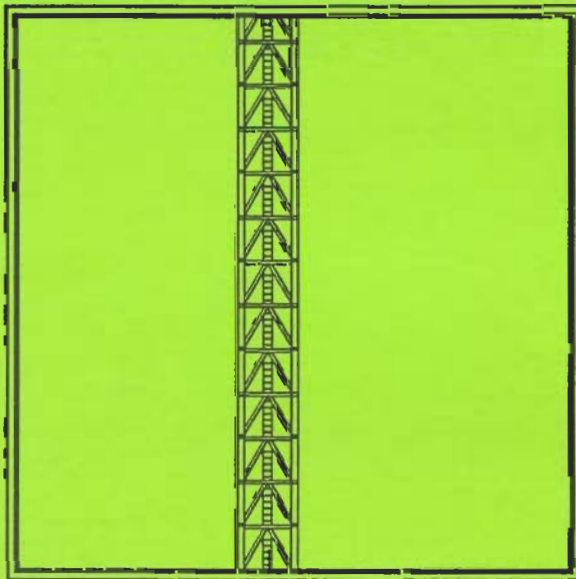


# M380D CONSTRUCTION TOWER CRANE



**Technical Data Sheet**

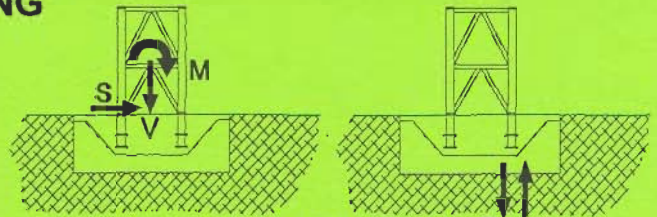
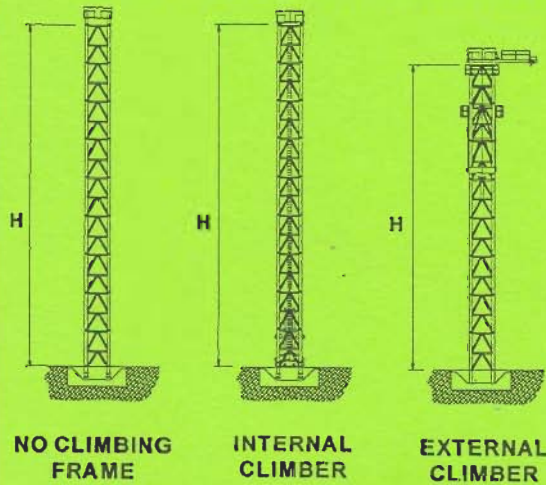
**FAVELLE  
FAVCO**



A subsidiary of Muhibbah Engineering (M) BHD



**CRANE ON BASE - FREE STANDING**



MAXIMUM VALUES T U AT ONE CORNER

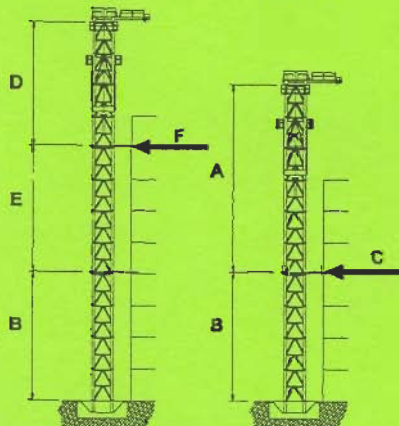
**FREESTANDING TOWER HEIGHTS AND FOUNDATION REACTIONS**

TOWER	NO CLIMBING FRAME			INTERNAL CLIMBING FRAME			EXTERNAL CLIMBING FRAME			UNITS
	1000	390	391	1000	390	391	1000	390	391	
H	30	36	44	30	36	44	24	32	36	(m)
M	698	849	1063	698	849	1063	668	883	998	(mT)
V	122	128	141	137	143	156	132	140	148	(T)
S	20	23	27	20	23	26	23	27	28	(T)
T	237	315	391	241	319	394	230	330	371	(T)
U	184	259	328	180	255	325	173	268	305	(T)

In-service wind speeds up to 20 m/s & out-of-service wind speeds up to 42 m/s.

Alternatives available upon request.

**EXTERNAL CLIMBING**



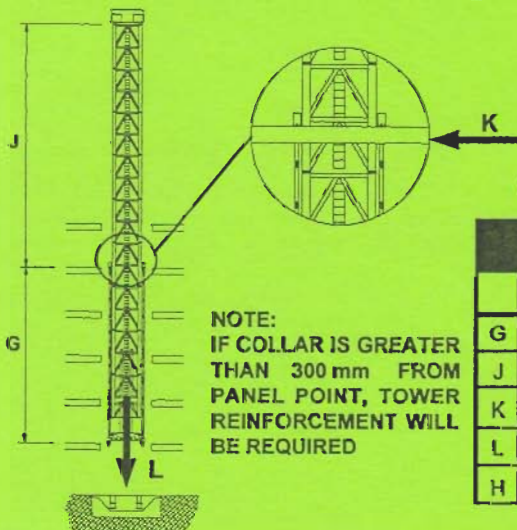
MORE THAN ONE TIE ABOVE BASE

ONE TIE ABOVE BASE

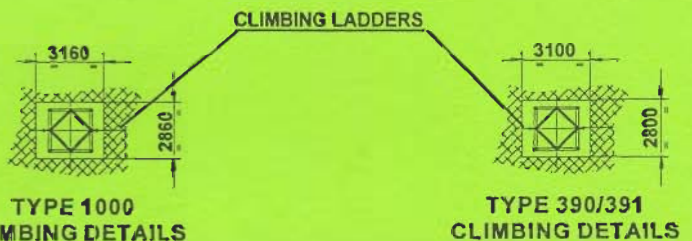
**EXTERNAL CLIMBING**

TOWER TYPES:		1000	390	391	UNITS
<b>ONE TIE ABOVE BASE</b>					
A	MAXIMUM HEIGHT ABOVE FIRST TIE	24	28	32	(m)
B	MINIMUM HEIGHT TO FIRST TIE	12	16	20	(m)
C	MAXIMUM HORIZONTAL TIE LOAD	107	99	94	(T)
<b>MORE THAN ONE TIE ABOVE BASE</b>					
D	MAXIMUM HEIGHT ABOVE TOP TIE	24	28	32	(m)
E	MINIMUM HEIGHT BETWEEN TOP TIES	12	16	16	(m)
F	MAXIMUM HORIZONTAL TIE LOAD	94	87	98	(T)

**INTERNAL LADDER CLIMBING**



NOTE: IF COLLAR IS GREATER THAN 300 mm FROM PANEL POINT, TOWER REINFORCEMENT WILL BE REQUIRED



**INTERNAL LADDER CLIMBING**

TOWER TYPES		1000	390	391	UNITS
G	MIN. HEIGHT BETWEEN COLLARS	9.0	8.5	10.5	(m)
J	MAX. HGT. ABOVE TOP TIE (WITH G)	21.0	27.5	33.5	(m)
K	MAX. HORIZONTAL LOAD (WITH G+J)	75.0	97.0	98.0	(T)
L	TOTAL VERTICAL LOAD (WITH H)	137.0	143.0	156.0	(T)
H	MAXIMUM FREESTANDING HEIGHT	30.0	36.0	44.0	(m)

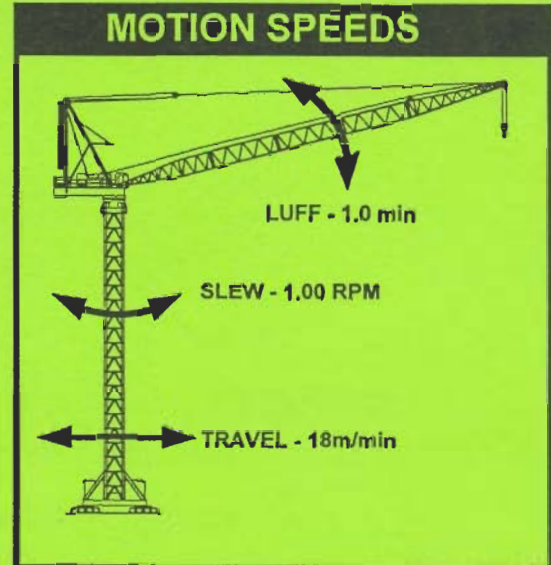
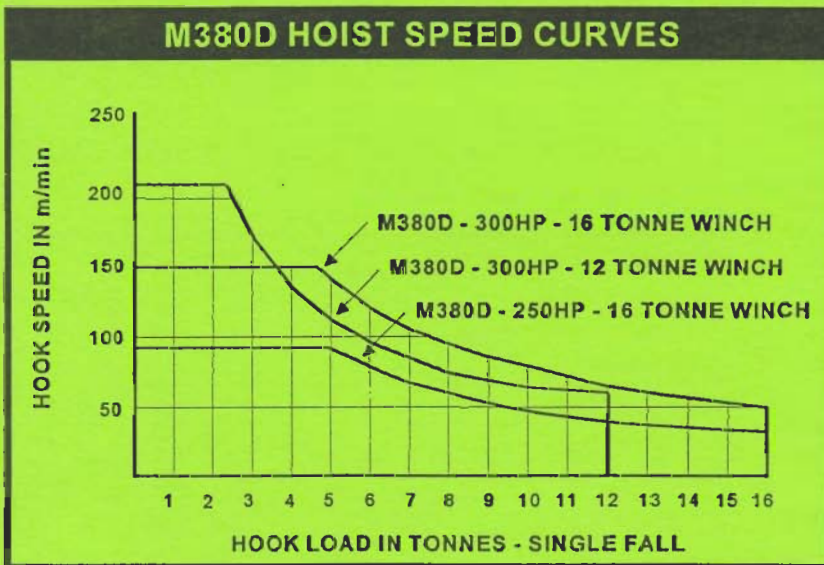


# RADIUS & CAPACITY

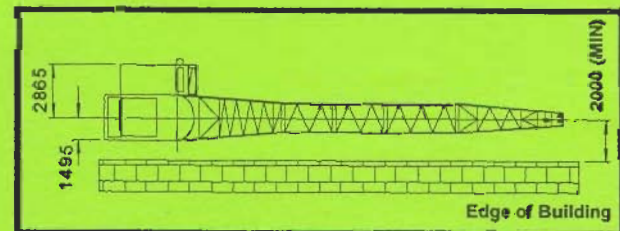
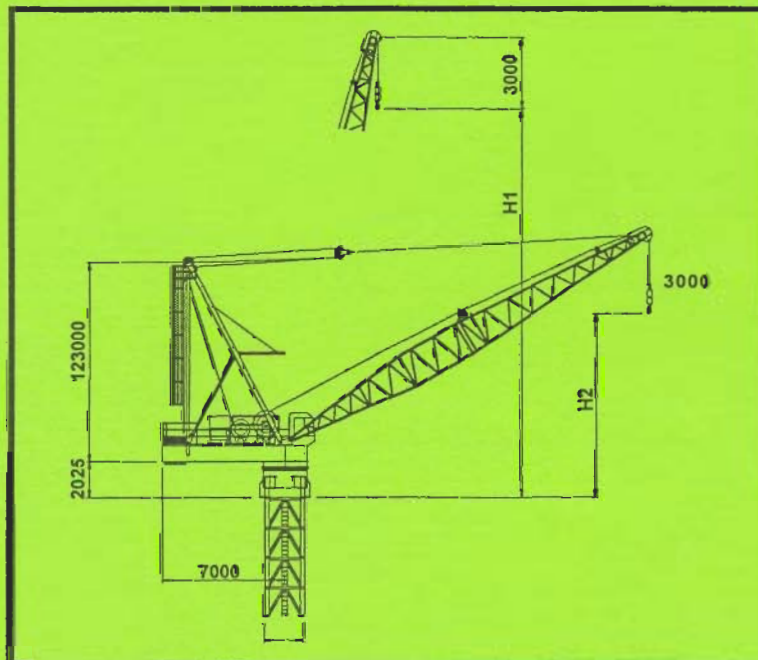
BOOM LENGTH (m)	MINIMUM RADIUS (m)	MAX RADIUS FOR 32 T (m)	RADIUS (METRES) & CAPACITY (TONNES) (16 TONNE & 12 TONNE WINCHES & 2 - FALL HOOK)																			
			5.2	10.0	15.0	17.5	20.0	25.0	27.5	30.0	32.5	35.0	37.5	40.0	42.5	45.0	47.5	50.0	52.5	55.0	57.5	60.0
			(m)	(m)	(m)	(m)	(m)	(m)	(m)	(m)	(m)	(m)	(m)	(m)	(m)	(m)	(m)	(m)	(m)	(m)	(m)	(m)
64.2	5.2	-	23.5	20.0	17.0	16.0	14.8	13.2	12.8	12.2	11.0	9.7	9.0	7.8	7.0	6.3	5.8	5.1	4.4	4.1	3.8	3.4
59.6	4.8	4.8	31.3	23.8	20.0	18.8	17.0	16.0	14.0	12.6	11.0	10.1	9.0	8.2	7.0	6.7	6.0	5.5	5.0	4.5		
55.0	4.5	6.0	32.0	28.0	23.3	21.8	20.0	16.3	14.4	12.9	11.8	10.3	9.2	8.5	7.8	7.0	6.2	5.9	5.4			
50.4	4.1	10.0	32.0	32.0	27.0	25.0	21.8	16.6	15.0	13.2	12.0	10.7	9.8	8.8	8.0	7.3	6.7					
45.8	3.8	14.3	32.0	32.0	30.3	26.0	22.1	17.0	15.0	13.6	12.7	11.0	10.0	9.2	8.2							
41.2	3.5	14.4	32.0	32.0	30.6	26.8	22.4	17.2	15.2	13.9	12.5	11.4	10.3									
36.6	3.2	14.5	32.0	32.0	31.0	26.8	22.8	17.6	16.0	14.2	13.0	11.7										
32.0	3.0	14.6	32.0	32.0	31.3	27.2	22.9	17.8	16.0	14.4												
27.4	2.6	14.8	32.0	32.0	31.5	27.8	23.5	18.3														

# SPEEDS

(Alternative Speed Configurations Available on Request)

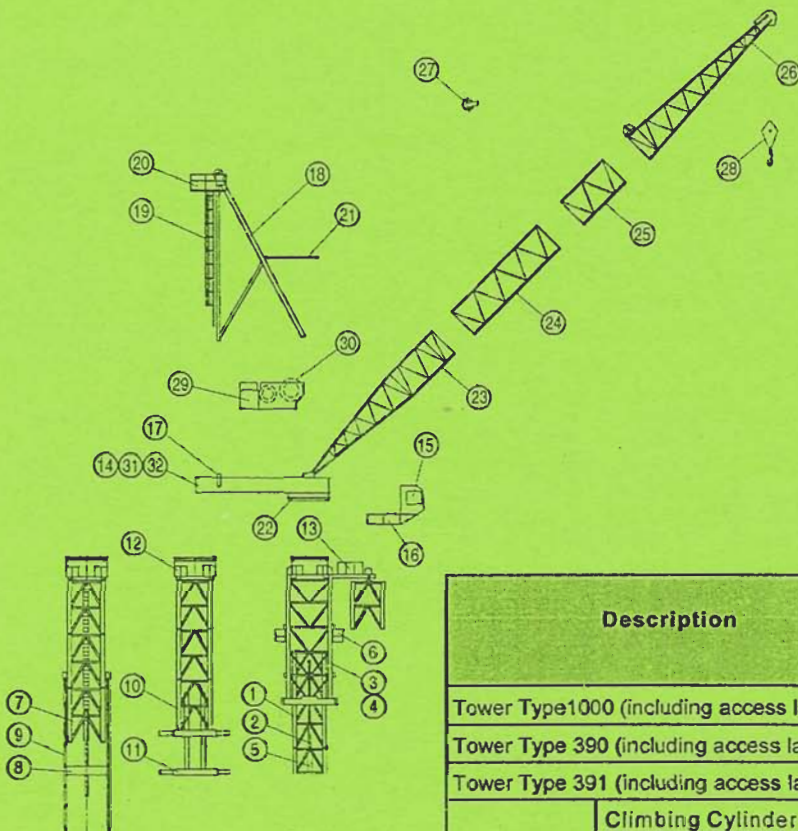


# DIMENSIONS



MAXIMUM RADIUS (m)	BOOM LENGTH (m)	HOOK HEIGHT	
		H1 (m)	H2 (m)
62.0	64.2	64.5	18.4
57.0	59.6	59.9	19.0
53.0	55.0	55.4	16.4
48.5	50.4	50.8	15.5
44.0	45.8	46.2	14.5
39.8	41.2	41.6	12.5
35.3	36.6	37.0	11.6
31.0	32.0	32.4	9.9
26.5	27.4	27.8	8.9





INTERNAL CLIMBING (LADDER)    INTERNAL CLIMBING (3-BEAM)    EXTERNAL CLIMBING



**FAVELLE FAVCO CRANES (M) SDN BHD**

9 Jalan SS15/4  
47500 Subang Jaya  
Selangor Darul Ehsan  
Malaysia  
Tel: 603 734 0612, 603 734 0635  
Fax: 603 734 0610

**FAVELLE FAVCO CRANES PTE LTD**

15C Pandan Road  
Singapore 2260  
Tel: 65 268 0095  
Fax: 65 265 2646

**FAVELLE FAVCO CRANES PTY LTD**

28 Yarrunga Street Prestons  
NSW 2170 Australia  
P.O. Box 456 Liverpool  
NSW 2170 Australia  
Telephone: 61 2 9607 0055, 61 2 9608 2000  
Fax: 61 2 9607 0022  
E-MAIL: favcosyd@enternet.com.au

Description		Pos	Qty	L Length (m)	W Width (m)	H Height (m)	Weight per item (kg)
Tower Type 1000 (including access ladders)		1	-	3.054	2.464	2.464	2400
Tower Type 390 (including access ladders)		1	-	4.000	2.398	2.395	3500
Tower Type 391 (including access ladders)		1	-	4.000	2.404	2.397	4070
External Climber	Climbing Cylinder	2	2	5.085	0.292	0.292	1400
	Side Panel	3	2	11.520	0.320	2.424	9200
	Tie	4	2	7.020	0.168	3.410	907
	Climbing Support	5	2	2.600	1.350	0.355	350
	Access Platform	6	1	3.550	1.073	1.235	199
Internal Ladder Climber	Bottom Climbing Tower (inc Cylinders)	7	1	4.000	2.411	2.400	13250
	Climbing Foot	8	1	2.400	0.350	0.710	1025
	Climbing Ladder	9	?	0.260	0.180	7.985	685
3 - Beam Climber	Bottom Climbing Tower	10	1	4.000	2.404	2.397	8500
	Climbing Beams	11	1	2.700	0.450	0.802	1630
Slew Mount		12	1	3.100	2.876	1.673	4330
Monorail Beam & Trolley		13	1	6.820	0.660	1.300	1451
Machinery Deck		14	1	8.428	3.440	1.425	9820
Cabin		15	1	1.700	1.200	2.100	1200
Cabin Support		16	1	4.000	1.335	1.325	330
Counter-weights		17	6	2.000	0.200	2.390	5100
Mast & Sheaves		18	1	12.600	2.900	0.900	4873
Mast Ladder		19	1	10.000	0.672	0.972	256
Mast Platform		20	1	2.475	1.450	0.935	188
Boom Buffer		21	1	3.069	2.566	0.225	272
Slew Ring		22	1	2.660	2.660	0.184	1176
Bottom Jib Section		23	1	13.700	2.640	2.620	1860
Jib Extension Section		24	1	9.200	2.420	2.420	1200
Jib Extension Section		25	1	4.600	2.420	2.420	820
Top Jib Section		26	1	13.700	2.420	3.147	1719
Bridle		27	1	1.135	0.220	0.890	454
2 - Fall Hook		28	1	0.890	0.420	1.940	614
Powerpack Winches		29	1	4.250	2.600	2.250	9515
Hoist Rope		30	1	400.000	-	-	1800
Split Deck - Front		31	1	3.000	2.990	1.492	5690
Split Deck - Back		32	1	5.427	2.990	1.300	6053

**Distributed By:**