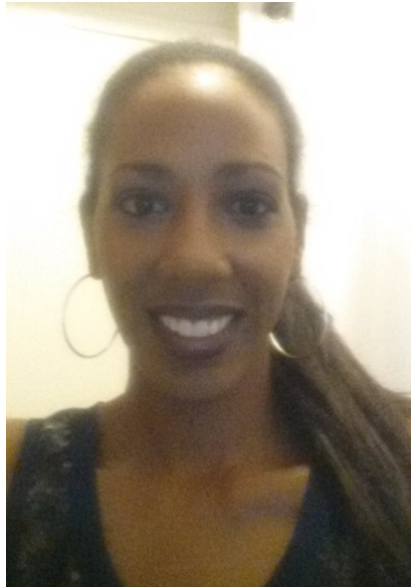


Angela Childress



I was born in the state of Washington, but have lived all over the United States because my mother served in the United States Army. I eventually ended up in Kentucky because I attended college at Eastern Kentucky University. Currently, I work in the field of human resources.

I was first introduced to the services of P&A after a frustrating battle with the school system over my son, a child with a disability. I truly believed that the school was providing him with the best educational services. After speaking with an advocate and learning about my son's rights, I found his rights were being violated. I was encouraged to look at programs set up to provide services for children with disabilities and realized that many other children's needs were not being met. This advocacy led me to the PAIMI Advisory Council, where I have been a member for over 6 years. It has been an honor to be a part of the Council. I enjoy being around like-minded people. As a member of the PAC, I am able to educate individuals with a disability, services providers and the public about resources and services for individuals with a mental health diagnosis and to remind others to treat all humans as equals.