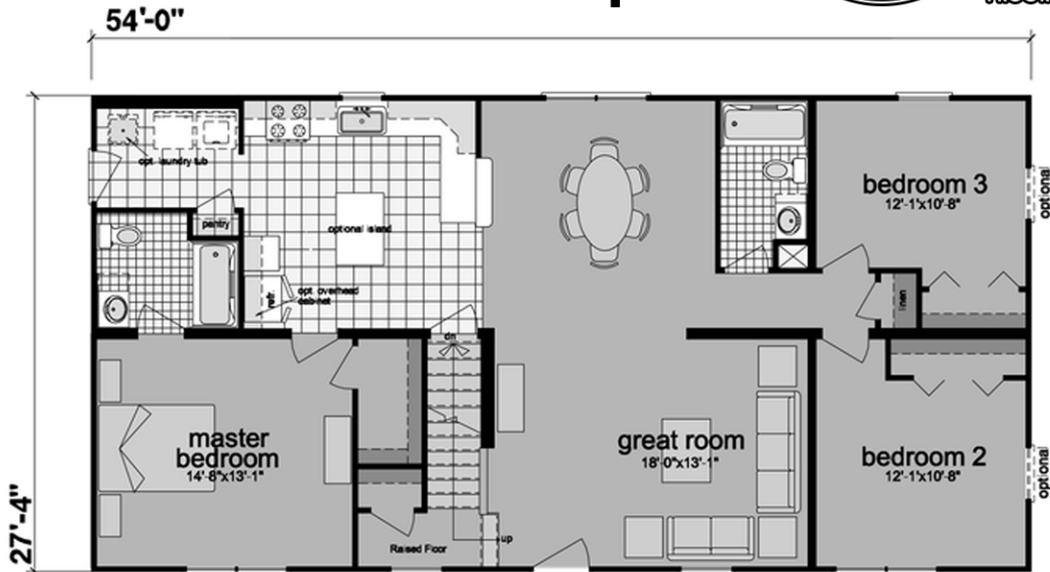
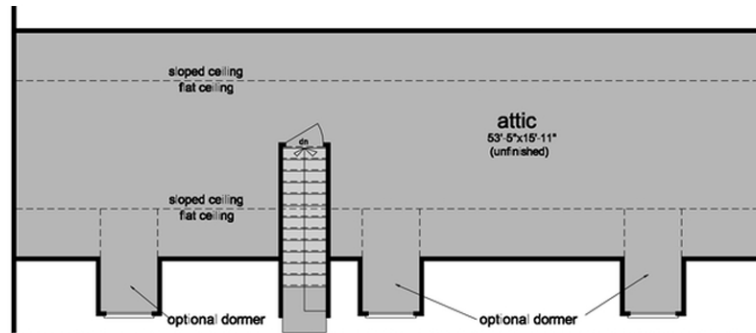


Buchanan-2 Cape



First floor



Second floor

870 sq./ft.

Standard Features

Floors

- 2x10 Floor Joists @ 16" o.c. with Dimensional Lumber Marriage Wall Rails
- 5/8" Tongue & Groove OSB Floor Decking, Glued and Nailed
- Shaw Carpets with 3/8" 5lb. pad and tack strip in living areas, bedrooms, stairs, hallways, and dining areas when applicable
- Vinyl Flooring at all Kitchen, Baths, Utility and Foyer areas

Exterior & Marriage Walls

- 2x6 SPF #2 Exterior Wall Studs at 24" o.c.
- R-19 Fiberglass Exterior Wall Insulation
- 7/16" OSB Sheathing on All Exterior Walls
- 8' Sidewall Height
- GEORGIA PACIFIC Lifetime Warranted 4/4 Vinyl Siding w/ Matching Corners
- Shutters are optional
- Building Wrap at All Exterior Walls

Roofs

- 5/12 Roof Pitch at 24" o.c. For all Ranch and 2-Story Models
- 12/12 Roof Pitch at 24" o.c. For all Cape Models
- 9 1/2" Eave Overhangs on all Models
- Flush Gable overhangs on All Models
- R-30 Blown-in Roof Insulation in all Ranch and 2-Story Models
- R-30 Blown in Roof insulation in all Cape and Bonus Ranch Models
- Top Flips are Shingled on 9/12 and 12/12 Roof Configurations
- 30 Year Architectural Shingles with No. 15 Underlayment Paper
- Ice and Water Shield at Eaves and Valleys
- Shingle Over Ridge Vent with Filter Core
- 7/16" OSB Roof Sheathing with "H" Clips

Exterior Doors & Windows

- Thermatru 6-panel 3/0 Steel Front Door with Wood Jamb and Deluxe Brushed Nickel Knob and Deadbolt
- Thermatru 6-panel 3/0 Steel Rear Door with Wood Jamb and Deluxe Brushed Nickel Knob
- Kinro All Vinyl Low E Single Hung Windows with GBG and Screens
- Kinro all Vinyl 6/0 x 6/8 Low E Slider with Screen (Where shown on plan)