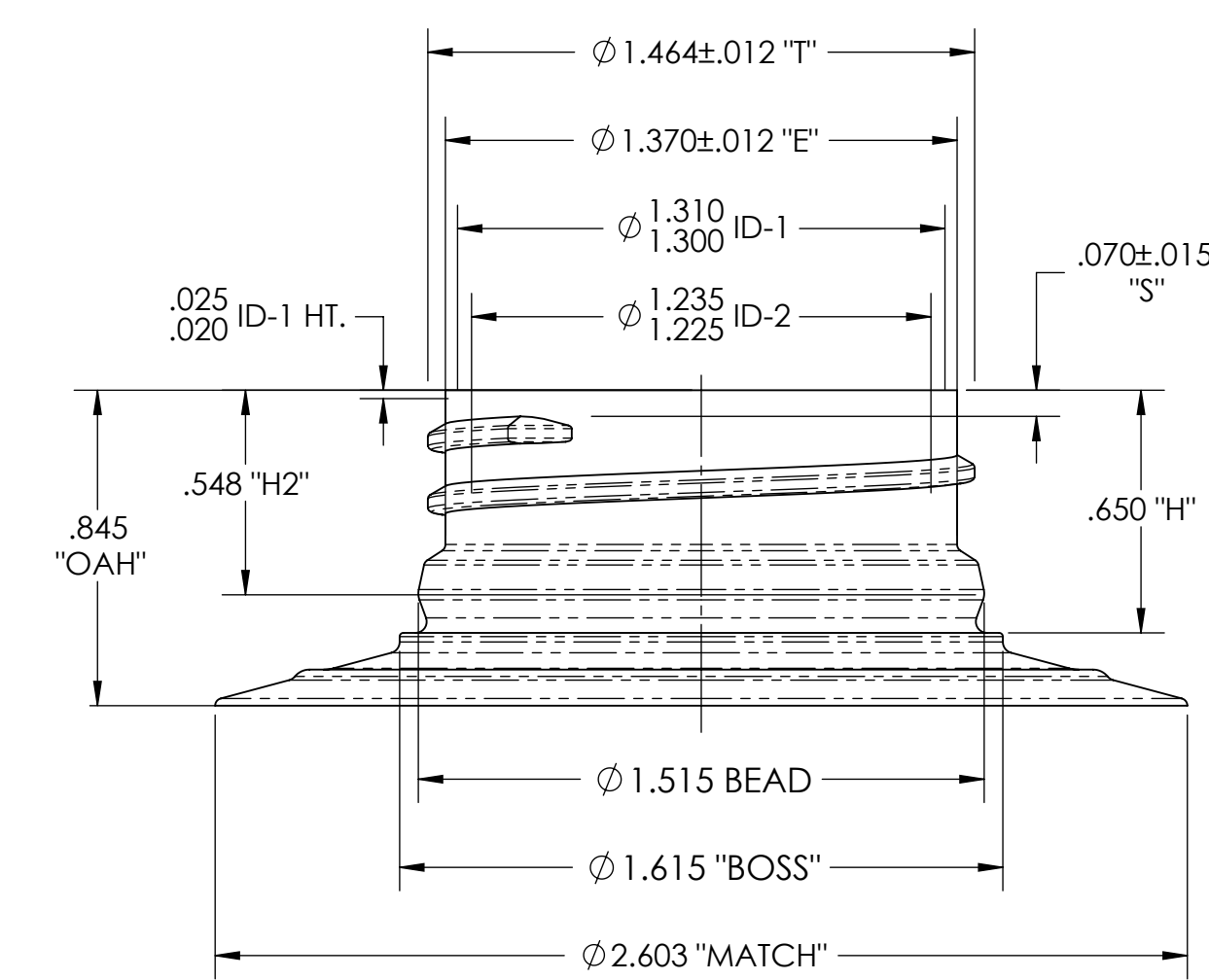
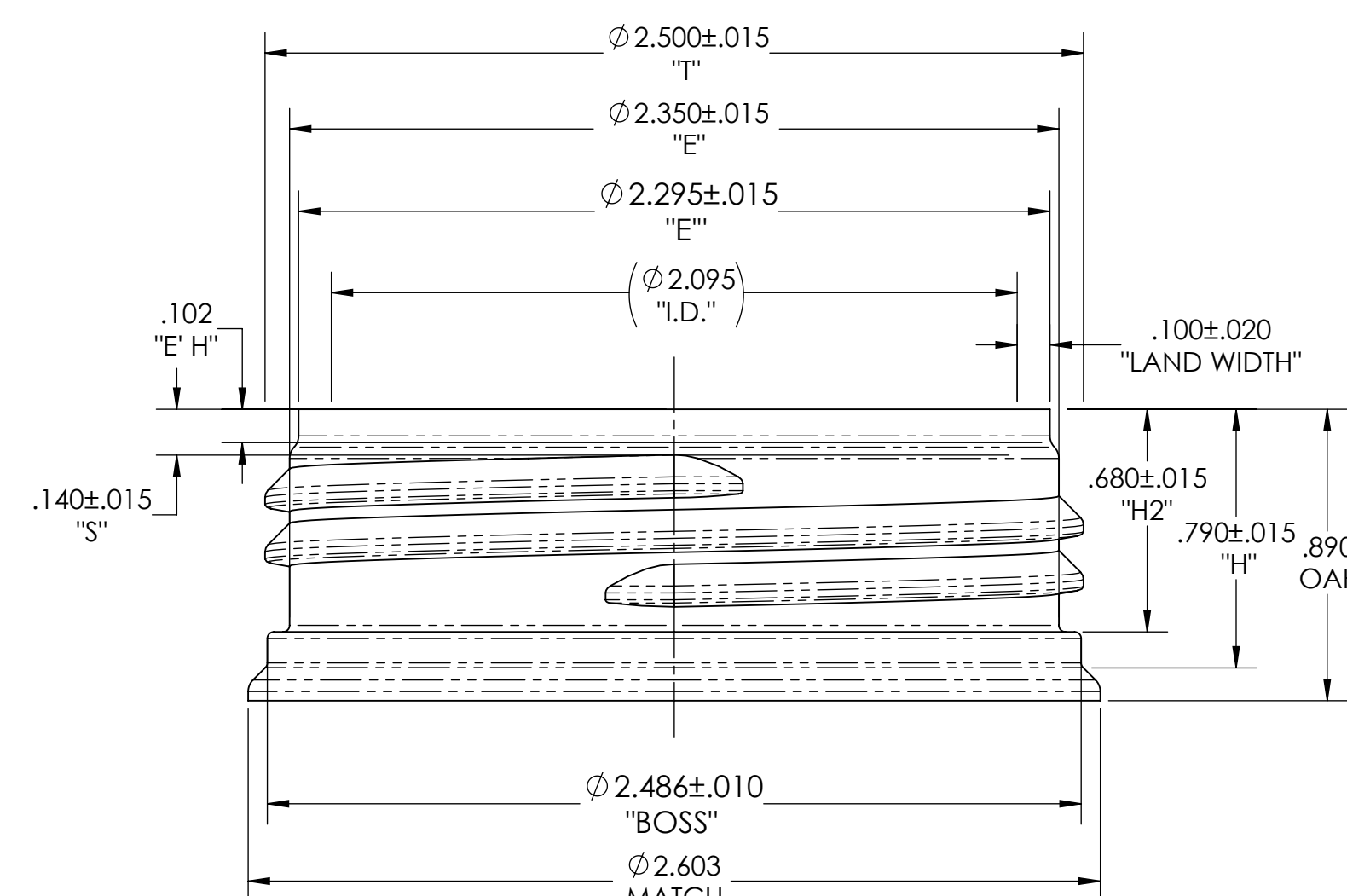
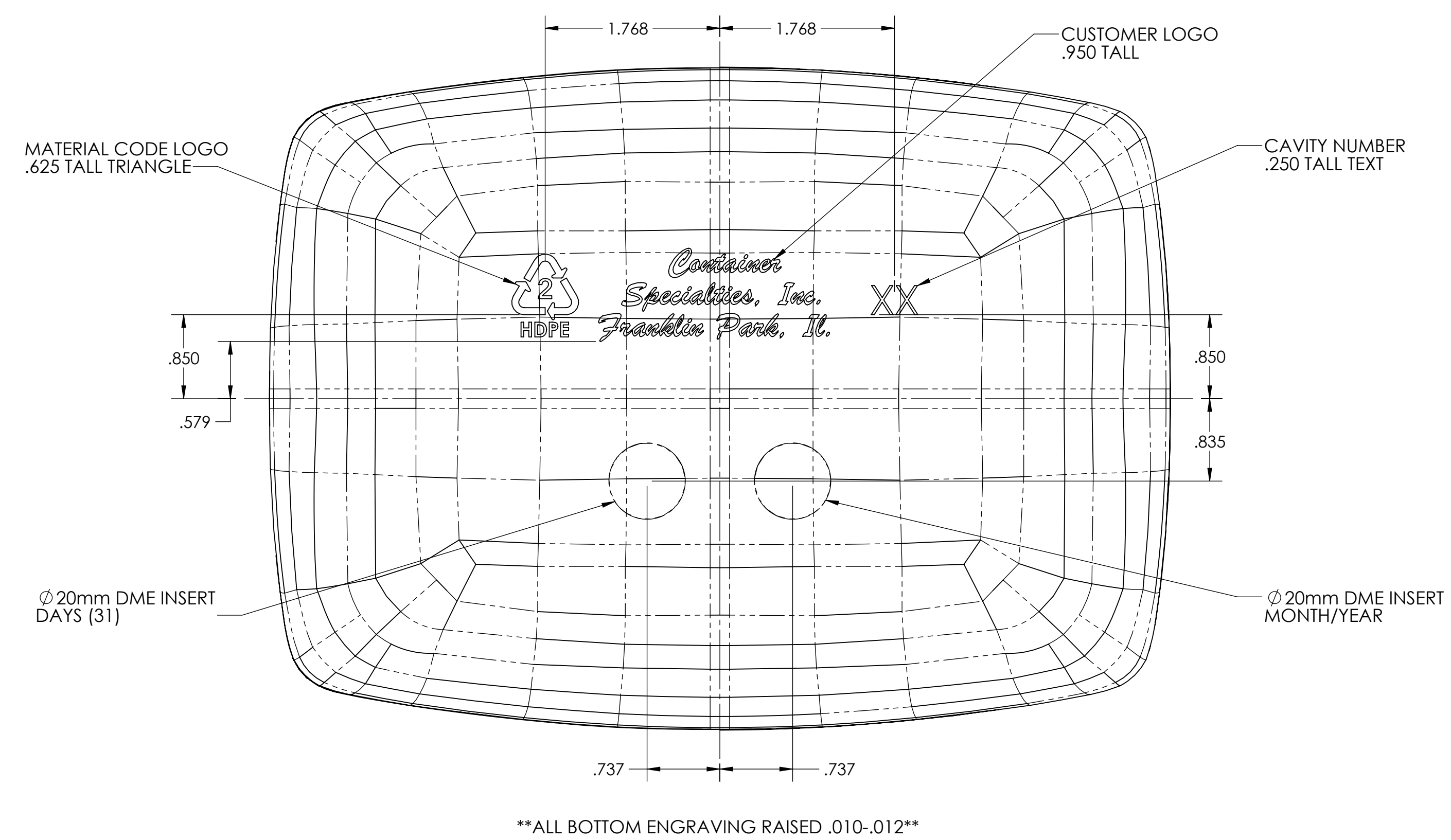
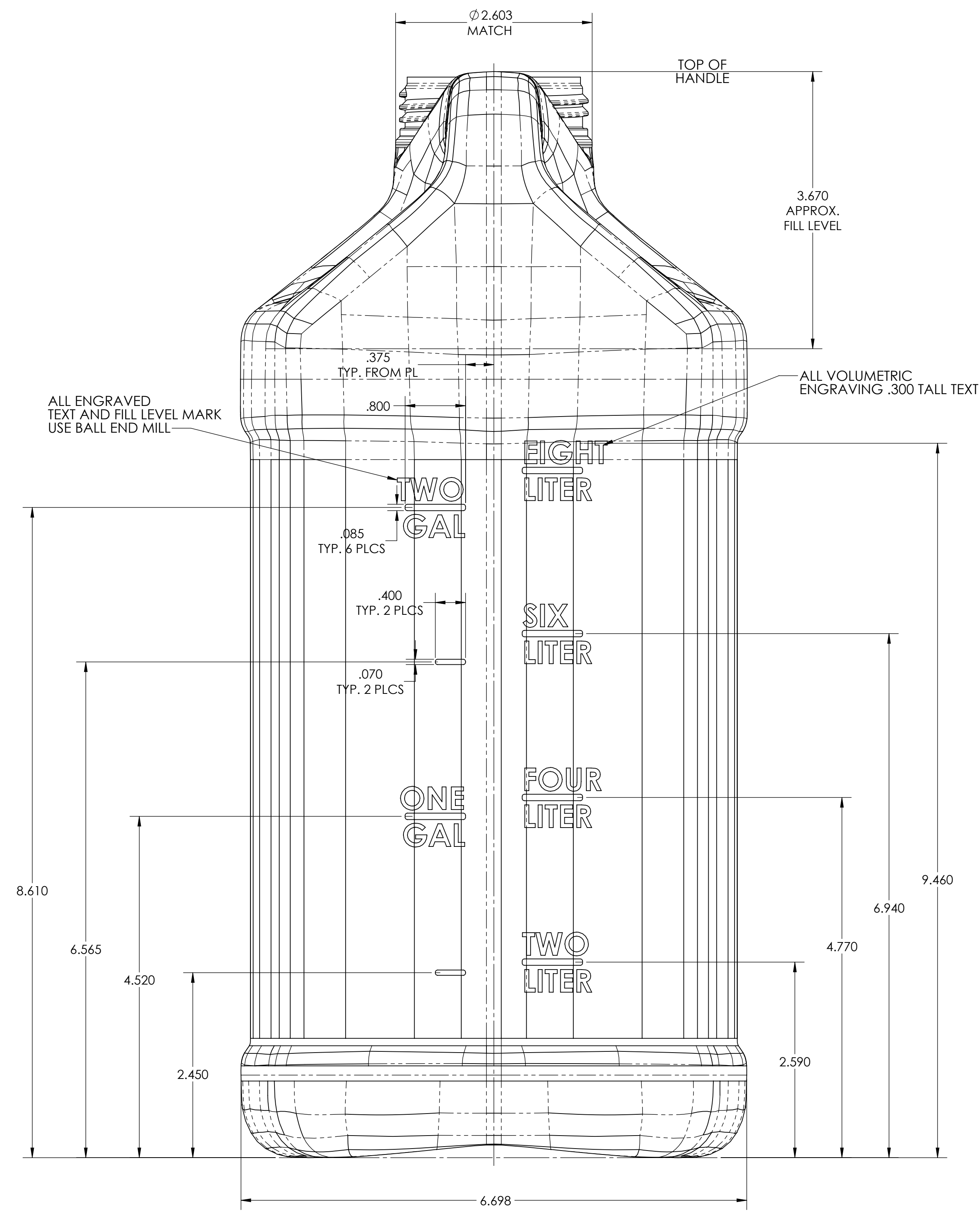
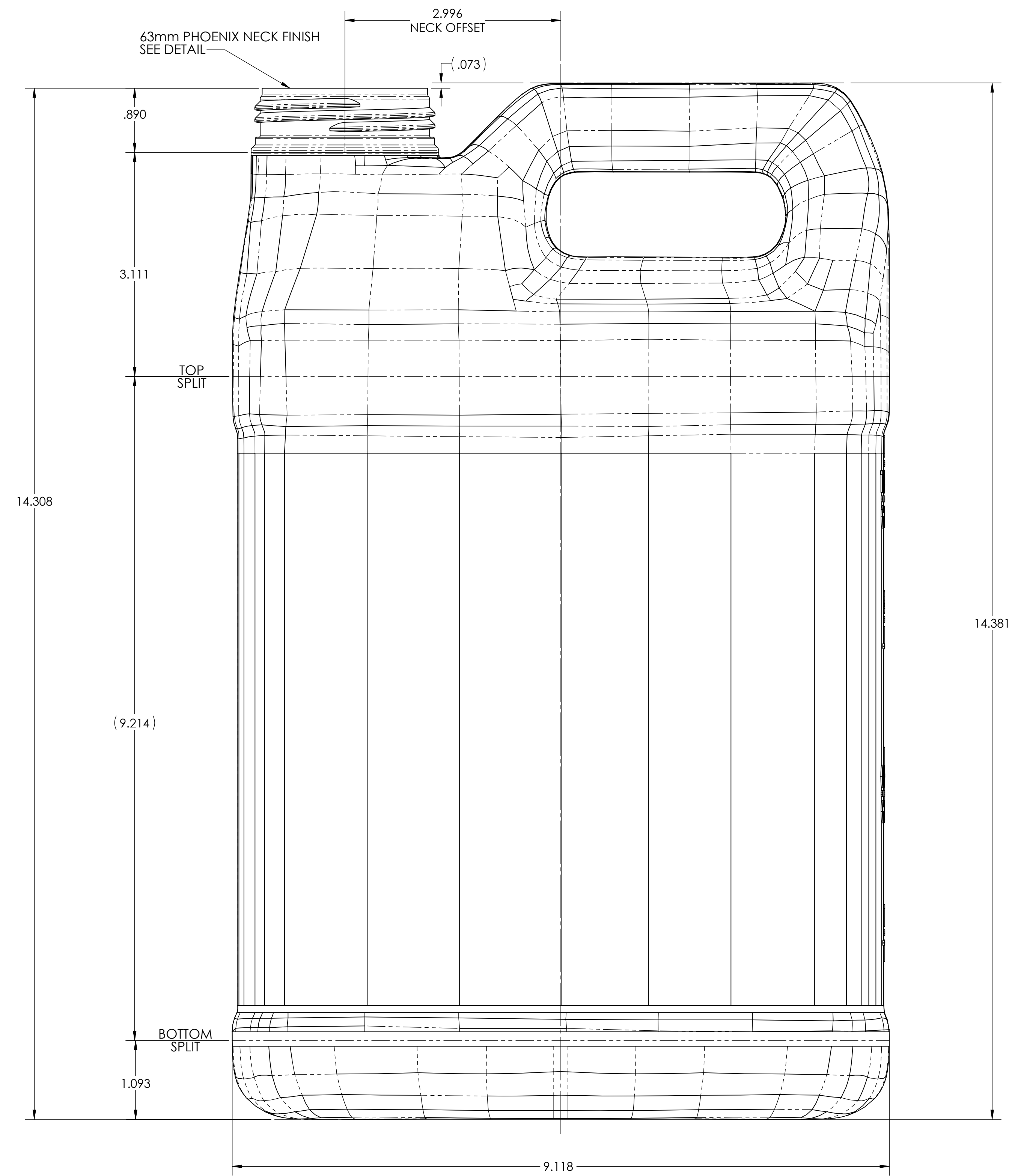


REVISIONS			
REV.	DESCRIPTION	DATE	APPROVED
-	See Sheet	-	-



63mm PHOENIX NECK FINISH CUSTOM  
REF PHOENIX DWG #63-S01-FINISH  
WITH CUSTOMER SPECIFIED T.E.S.H DIMENSIONS  
DETAIL 2X SCALE

- NOTES:  
1) TURNS OF THREAD -- 2  
2) THREADS PER INCH -- 6  
3) THREAD START IN PIN HALF AS SHOWN

- ALTERNATE NECK  
38mm REXAM CR CUSTOM  
DETAIL 2X SCALE
- NOTES:  
1) TURNS OF THREAD -- 1.5  
2) THREADS PER INCH -- 6  
3) THREAD CUTTER SIZE -- .500 DIA.  
4) THREAD START IN PIN HALF AS SHOWN

- Notes:  
1) Tolerances Unless Specified:  
Vertical -- ±.090"  
Horizontal -- ±.110"  
Volumetric -- ±3.6oz  
2) Product dimension scaled down from digitized cavity data

**\*\*PRODUCT SHOWN SPECIFICALLY FOR CAVITIES 6-8\*\***



<small>PROPRIETARY AND CONFIDENTIAL</small> <small>THE INFORMATION CONTAINED IN THIS DRAWING IS THE SOLE PROPERTY OF MID-AMERICA MACHINING, INC. ANY REPRODUCTION IN PART OR AS A WHOLE WITHOUT THE WRITTEN PERMISSION OF MID-AMERICA MACHINING, INC. IS PROHIBITED.</small>	Drawn By: SPK	Date: 6/9/14	Container Data:	Weight: 372 grams	Description: Product Drawing
	Checked: KDG	Date: 6/9/14	Fill Level Capacity: 320.0 oz.	Overflow Capacity: 364.7 oz.	2.5 Gallon F-Style
	Customer: CSI	Job#: 20833	Material: HDPE	Avg. Wall Thickness:	Size: Drawing Number: MA9062-2
	Reference Materials: Customer Mold# PD1176 Cav#1	Scale: 1:1	Sheet: 3 OF 3	Rev: H	