

2017 GMC SIERRA ELEVATION

\$35,995 CASH PURCHASE PRICE
[INCLUDES FREIGHT, PDI AND \$1,000 GM CARD APPLICATION BONUS]



GMC

ENDS MARCH 31

OFFER DETAILS >



LIONS BAY COMMUNITY NEWS

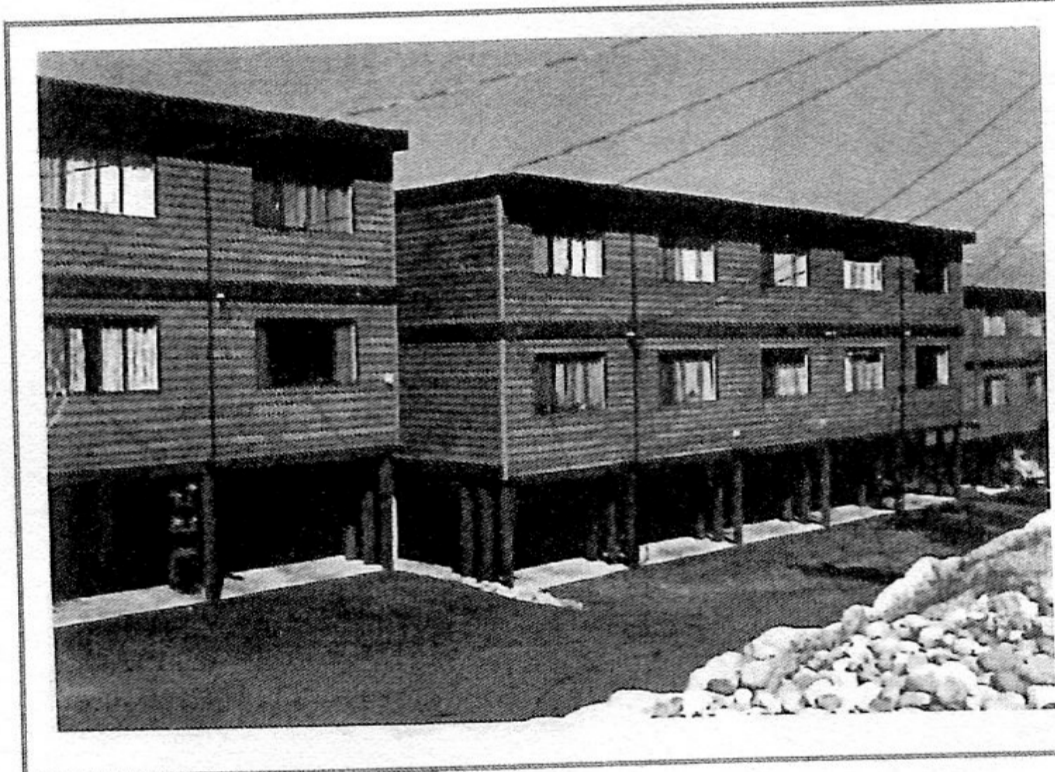
www.lionsbay.net

SPRING - 2012

was powerless to do anything. Curly's famous mantra was; "They will look like a slum in no time at all!" The villagers were afraid that more would be built at a later stage. One morning Curly phoned Frank Smith and said: "Frank, let's go and turn their water supply off, hopefully it will deter them from going ahead with this unsightly project!" None of the tricks in Curly's bag did any good. Curly and the residents pressed full steam ahead to incorporate Lions Bay from a Water Improvement District to a Village. The two forces marched to their own marathon missions. The townhouses were completed before Lions Bay was incorporated on January 2nd 1971. Curly Stewart became Lions Bay's first Mayor. During his entire years as Lions Bay's Mayor he never ever changed his mind. The rest is history.

For the adventurous who dared to drive to the rural and far-removed village, Lions Bay soon became a dream. Mansje and Ken More wanted to purchase a townhouse. Lions Bay was a place they could afford to buy their 1st home. With its million dollar views, with the majestic mountains all around, the ocean and its stunning sunsets were the right combination to find happiness for the young couple. Getting the money was, of course, another story. Each phone call to the bank was just another disappointment. Lions Bay had no fire

became the first baby ever born to a family at the townhouses. Over the last 40 years the Osborne family has been very creative and supportive to keep their vision alive for our unique neighbourhood.



From the picture(s) it is hard to recognize the townhouses from the early 70's. The changes were made possible in 1986 when the government purchased a small slice of land that was part of the big highway access change in Lions Bay. This was a golden opportunity to change the outdated '70's look. Nedjo Jovanetic, a townhouse resident at the time, started to submit his creative ideas to the V.R 18. Strata Council. They and its members agreed on the contemporary look. Peter Zeipper, a local builder at the time, completed the job successfully. Ken McCullough our local electrician was contracted to remove the ugly electrical cables above. After eight long months of construction on Centre Road we got a

The recent Sea to Sky high upgrade, the attractive noise wall, the silent pavement has made a healthier, quieter and more pleasant way to live.

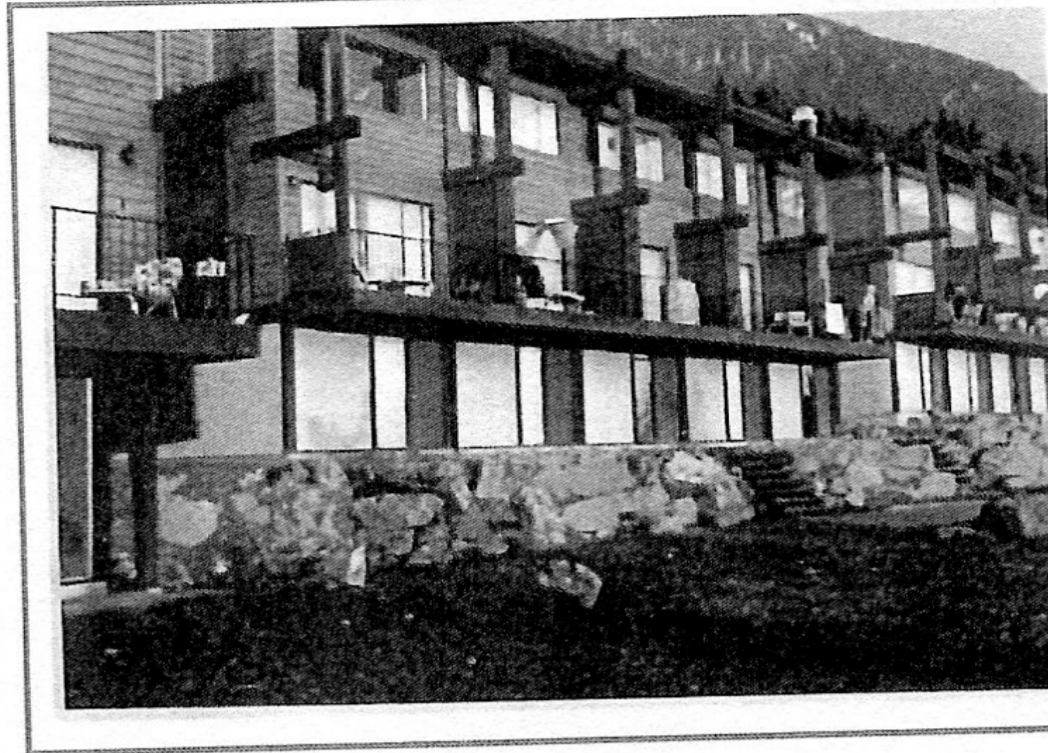
Our spectacular sunsets are the same as they were when we moved here in 1974. The eagles still fly over. The snowcapped mountains and the islands are a reminder of truly is our piece of paradise. The white sided Dolphins back in the Sound what else can we do? We must be mindful of what has been left to us. How can we as the best take care of these precious treasures so future generations can enjoy the same beauty that we have in our backyard?

This article was published in Bay Seagull in May 1997. Revised for reprint in Lions Bay Community News Spring 2012. Submitted on behalf of the

department, and who would want to live so far away from town? The North West Trust Company on Pender Street finally gave the eager couple the opportunity. The mortgage rates were at 11%. They purchased 430 Crosscreek Road, (an end unit) slightly wider than the middle units. The Sale price was \$21,000 in December of 1970. They moved in March the following year. Their unit was the Official Sales Display Townhouse at Crosscreek Road.

During this time Leila and the late Gerald Osborne lived in Deep Cove with their son Jay. Their dream became a reality when they purchased a middle unit for \$19,000. When the end unit next door became available, they moved and have lived there ever since. Son Mark

construction on Centre Road. We got a new retaining wall and the wonderful landscaping job was complete. A vision for a garden patio setting took the residents into a new era. This creativity and much hard work has given us our park-like setting. Attractive bay windows were added in 1996 to Strata V.R.11.



Captured with Lightshot

[edit image](#) [find similar](#) [report abuse](#)

[Tweet](#)

[Like](#) 0

[G+](#)



[Report misleading ad](#)



[Report misleading ad](#)