

OSE

Stoneware Items

Sleepy Eye Milling Company Collectibles

- These are best known for their depiction of a Sioux Indian Chief “Ish-tak-ha-ba”
- Stoneware was first produced by Weir Pottery.
- Weir pottery catalog listed a butter crock, a stein and a salt bowl. These date between 1899 and 1906. A vase was also made but not listed in the catalog.

Sleepy Eye Milling Company Collectibles

Vase



Stein



Butter crock



Salt bowl

1903 GRAY & BLUE FLEMISH WARE

- Manufactured first by Weir Pottery Company and then later by Western Stoneware Company.
- These pieces were colored with a “Fleming Blue glaze” thus giving them their name.
- These are usually marked with “Old Sleepy Eye” on them and commonly referred to as stoneware

Sleepy Eye Milling Company Collectibles

Vase



Stein



Butter crock



Salt bowl

1903 GRAY & BLUE FLEMISH WARE

- The *only* pieces put into sacks of flour was the *stoneware rose vase, stein, salt and butter*.
- Weir pottery was awarded a large contract in 1903 to produce these pieces and shipped two boxcar loads of these to the OSE Mill at two different times. Each boxcar contained 500,000 pieces, which would mean there were a total of 1,000,000 produced.
- The stoneware pieces were put into the flour sacks until they were all gone. The myth, the government made the OSE Milling Co. stop this advertising promotion is a falsehood.
- How many of the four pieces were made is a mystery, but there seems to be more of the rose jars that survived.

Sleepy Eye Milling Company Collectibles



VASE

- Tall and cylindrical jar measuring 8 1/2" tall and 4 1/2" wide.
- This is the only piece that features the "trademark head."
- The head features the Indian with earring and 2-feather headdress. The words Old Sleepy Eye are under the bust.
- The reverse side has cattails, dragonfly and frog.
- The vase is the only piece that has an orange peel texture.

Sleepy Eye Milling Company Collectibles



STEIN

- Measures 7 3/4" tall and 4 1/2" around the base.
- There is an Indian bust on the front embossed with "Old Sleepy Eye" underneath
- The scene on the reverse is an Indian crouching over a fire with trees and wigwams in the background.

The handle has a small Indian head molded at the top.



Sleepy Eye Milling Company Collectibles

SALT BOWL



- Round, heavy stoneware bowl measuring 6 1/2" wide by 4" high.
- Has an embossed Indian head with a war bonnet and shows a peace pipe on one side of his head and a bow and arrow on the other. The words Old Sleepy Eye are under the bust.
- The reverse decoration is vine-like.



Sleepy Eye Milling Company Collectibles



BUTTER CROCK

- A large, flat bottomed vessel that measures 6 1/4" in diameter and 5" high.
- It has the Indian bust in war bonnet and the words "Old Sleepy Eye" embossed below.
- The scene on the reverse is an Indian crouching over a fire with trees and wigwams in the background.

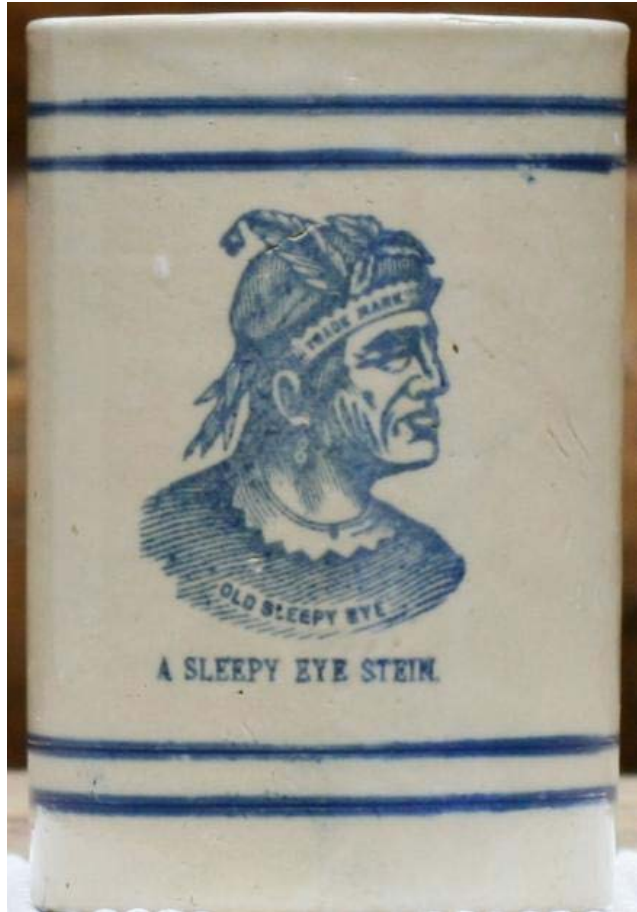
Sleepy Eye Milling Company Collectibles



VERSE MUG

- This mug was made by the Minnesota Stoneware Company in Red Wing, MN which later became Red Wing Pottery.
- The verse reads "Here's to the brown-skinned warrior, Old Sleepy Eye by name, Who gave our flour and cereals Their wide renown and fame."
- Buff in color with blue trim and pictures Old Sleepy Eye

Sleepy Eye Milling Company Collectibles



NON-VERSE MUG

- This mug was made by Minnesota Stoneware Co in 1902.
- This mug is said to be ten times rarer than the verse mug.
- The non-verse mug is not bottom marked.
- Buff in color with blue trim and pictures Old Sleepy Eye

Sleepy Eye Milling Company Collectibles

Western Stoneware Company

- 1906: 7 potteries were combined to form the Western Stoneware Company. One of the companies in this merger was Weir Pottery of Monmouth.
- Current bottom stamp of Western Stoneware Company is a maple leaf and a W. The old back stamp on the Sleepy Eye items was WSCO Monmouth Illinois in a diamond shape. Some items were marked but many are not.
- Western Stoneware produced a number of pottery items, including 5 basic sizes of pitchers (1/2 pint to 1 gallon), a sugar bowl, a stein, a vase and mugs(4 1/4" and 4 3/4").
- Pottery pieces have been found in a variety of colors including cobalt blue and white, green, yellow, all cobalt, all brown, brown on yellow, and brown on white.

Sleepy Eye Milling Company Collectibles



PITCHERS

- They are white and cobalt blue
- They all depict the same Indian profile in war bonnet and on the reverse with wigwams, trees and couching Indian.
- Some of these pitchers were edged at the top with a blue line and others were left unpainted. It is possible to collect a set of each variety.

#1 (half pint): 4" from center of the lip to the base and 3" across

#2 (pint): 5 1/4" tall and 4" across

#3 (quart): 6 1/2" high and 5" across

#4 (half gallon): 8" tall and 6" across

#5 (gallon): 9" tall and 7" across the base

Sleepy Eye Milling Company Collectibles

SUGAR BOWL



- Commonly paired with the smallest pitcher for a sugar and creamer set.
- Measures 3 1/4" tall and 3 1/2" wide
- The scene is the Indian profile in war bonnet and on the reverse with wigwams, trees and couching Indian similar to the pitchers.



Sleepy Eye Milling Company Collectibles



Blue banded
mug



All Blue mug

Stoneware mug



POTTERY MUGS

- There are 2 sizes: one measures 4 1/2" in height and 3 1/4" across the base, the other measures 4 3/4" in height and 3 1/2" across the base.
- Modeled after the stein except the words "Old Sleepy Eye" do not appear.
- Blue Banded mug measures 4 1/2" in height and 3 1/2" bottom diameter.
- All blue mug measures 4 1/4" in height by 3 1/2" bottom diameter.
- Stoneware mug measures 4 1/4" in height and 3 3/8" bottom diameter.

Sleepy Eye Milling Company Collectibles



POTTERY STEINS

- Measures 7 3/4" tall and 4 1/2" across the base
- Steins are the only pottery piece that displays the "Old Sleepy Eye" words under the bust.
- The handle has a small Indian head molded at the top.
- The scene is the Indian bust on the front and on the reverse with wigwams, trees and couching Indian similar to the pitchers.

Sleepy Eye Milling Company Collectibles



POTTERY VASE

- Tall, cylindrical off-shoots of the stoneware vase.
- Measures 8 1/2" tall by 4 1/4" at the base
- Has 2 sides identical with cattails, frogs and dragonflies.
- Has the orange peel texture.

Sleepy Eye Milling Company Collectibles



COLORED STEINS & VASES

- Pottery pieces were produced in 5 colors or combinations of these.
- Brown, gold/yellow, green, cobalt and white.



Sleepy Eye Milling Company Collectibles



COLORED STEINS & VASES

- Pottery pieces were produced in 5 colors or combinations of these.
- Brown, gold/yellow, green, cobalt and white.



Sleepy Eye Milling Company Collectibles

Board of Directors Stein

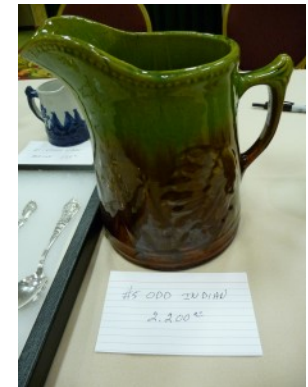


Sleepy Eye Milling Company Collectibles



COLORED PITCHERS

- Pottery pieces were produced in 5 colors or combinations of these.
- Brown, gold/yellow, green, cobalt and white.
- The blue and white, as well as the colored pitchers, were made by the Weir Company as open stock and wholesaled to the stores in 1903



Sleepy Eye Milling Company Collectibles

POTTERY TRIVET



- 7" round trivet measuring 3/4" thick
- Features the war-bonneted Indian bust as the center medallion and surrounded by trees, teepees, and Indian campfires molded in relief around the border.

Sleepy Eye Milling Company Collectibles

POTTERY WITH ADVERTISING

- Pieces of Old Sleepy Eye pottery with advertising on them are very rare.
- The pitcher above was made as a Christmas present for the employees of the Lakins company in 1909.
- To date only seven are still known to exist. It is not known how many were produced.



Sleepy Eye Milling Company Collectibles



MONMOUTH POTTERY

- Blue & Grey pitchers with Monmouth circle mark on bottom
- Made in all 5 pitcher sizes
- Very Rare



Sleepy Eye Milling Company Collectibles



No Handle Stein

RARE & UNUSUAL ITEMS



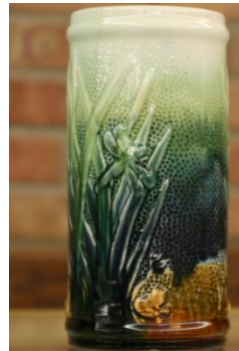
Cranberry & Blue pitcher very rare.

The handles on the other pitchers different and unusual colors.



Green & Yellow

Middle item (#1 creamer)
is a sample piece.



Red Wing pieces.

There are only 2 teapots known
to exist and very few steins.



Green pitchers have Weir circle mark
on the bottom and were made before 1906.