

LTE

84%

8:52 PM

State St

PEOPLE'S
FREEWAY

Dim Sum House

Sonic Drive-In

Smith's Ballpark

Main St

MPLE VIEW

WEST TEMPLE
ADDITION

OMBU Grill

Fillings & Emulsions
Salt Lake Main

Salt Lake Community
College South Campus

Sweet Lake
Biscuits & Limeade

Ashley HomeStore
Google

ROLES & RESPONSIBILITIES

ELECTED & APPOINTED OFFICIALS

WHO:

- + Mayor Mendenhall
- + City Council
- + Planning Commission

ROLE:

- + Directs planning process
- + Provides policy guidance
- + Holds public hearings
- + Reviews and adopts draft plan

MANAGEMENT & TECHNICAL TEAM

WHO:

- + Salt Lake City Staff
- + UTA
- + WFRC
- + Consulting Team

ROLE:

- + Oversees planning process
- + Completes analysis
- + Drafts plan and conducts outreach

STEERING COMMITTEE

WHO:

- + 20-25 person group
- + Residents
- + Business owners
- + Other community representatives

PARTICIPATION:

- + Guides the community engagement process
- + Reviews materials, analysis, and community input to ensure appropriately reflected in the draft plan
- + Acts as an ambassador between the Plan and the Community

BALLPARK COMMUNITY

WHO:

- + Residents
- + Business Owners
- + Property Owners
- + Visitation, Employees, and Patrons
- + Other Stakeholders

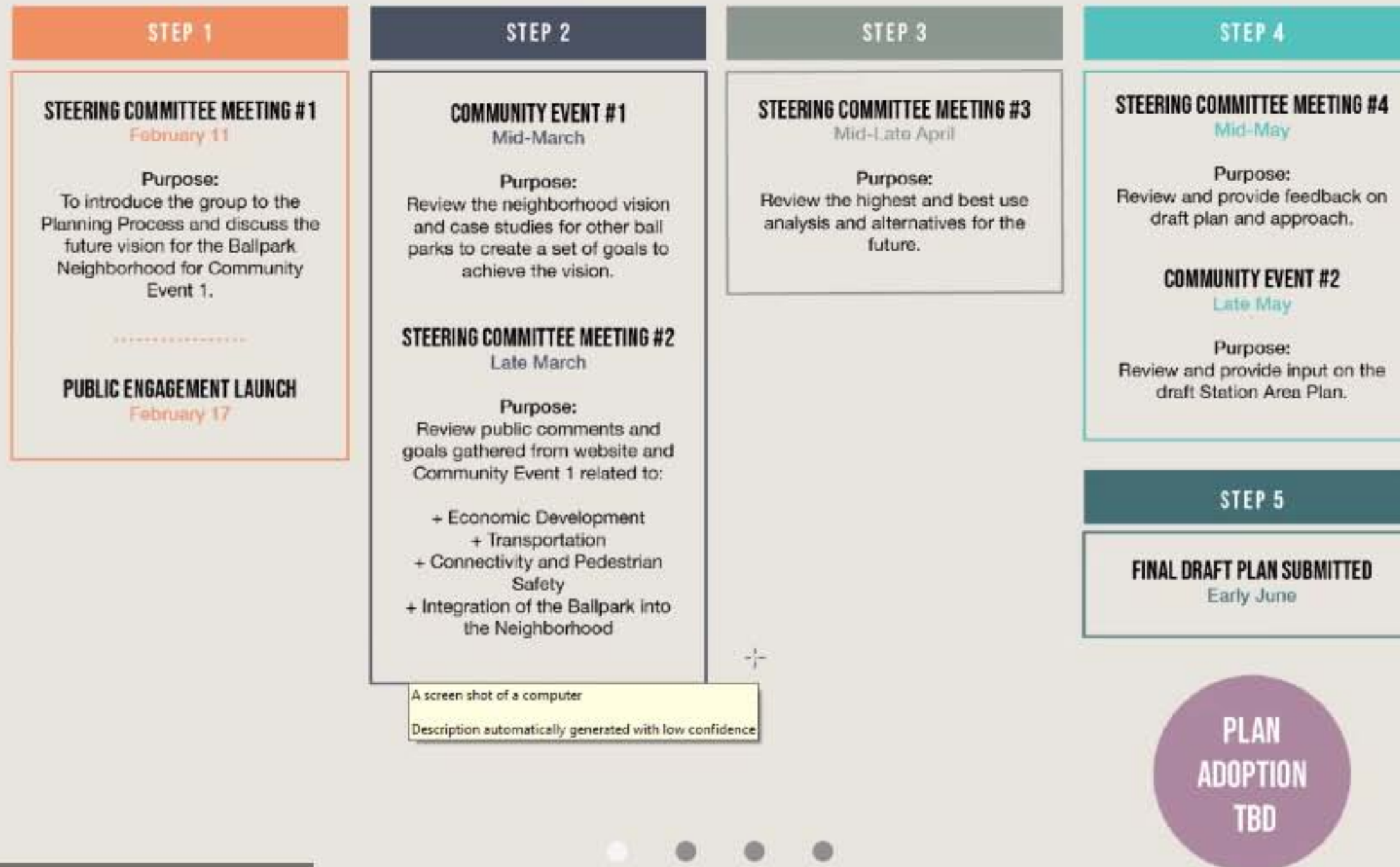
PARTICIPATION:

- + Provides input online, in-person, and other methods
- + Participates in surveys, focus groups, and other events
- + Reviews and reacts to draft materials and ideas

A picture containing text, electronics
Description automatically generated



ENGAGEMENT STEPS





Zoom

Leave

KEY TERMS FROM PRIOR PLANNING ACTIVITIES

• REC

Ballpark in the next 10-15 years will be...

- Safe
- Vibrant
- Diverse in people and places
- Connected and accessible
- Balanced between old and new identities
- Thriving
- A gateway
- Uniquely identifiable & aesthetically pleasing
- Affordable
- Year-round destination
- Family friendly



Unmute



Start Video



Share



Participants



More

MARKET ASSESSMENT

- Across all retail categories there is over 232,000 square feet of unmet retail demand
 - Full and limited-service restaurants, grocery stores, health and personal care stores, department stores
- The analysis reveals demand for nearly 17,000 square feet of office development on an annual basis
 - Midrise, garden, and corporate campus employment centers
- Based on current and anticipated home ownership and rental rates, there is demand for
 - 62 renter-occupied units and
 - 81 owner-occupied housing units that the Ballpark area can absorb on an annual basis



SUCCESSFUL REGIONAL PLACES

- 9th & 9th Neighborhood Center
 - Area scaled for the neighborhood with local serving goods and services
 - Unique neighborhood feel rather than a destination feel
- River Park Corporate Center
 - Connectivity via interstate, integration of natural environment as an amenity (jordan river)
- Sugar House
 - Destination retail and restaurants, trails and open space connectivity, variety of residential products and price points
- Downtown South Salt Lake
 - Multi-modal transportation, destination retail and restaurants, variety of residential products and price points



• REC

EMERGING IDEAS

- Importance of affordable housing
- Infill neighborhood strategies
- More opportunities related to Ballpark
- Densities
- Addressing gentrification



Pedestrian Crashes

2015 - 2020

- **Total:** 77 Crashes
- **Fatal:** 2 Crashes
- **Injury:** 73 Crashes
- **PDO:** 2 Crashes

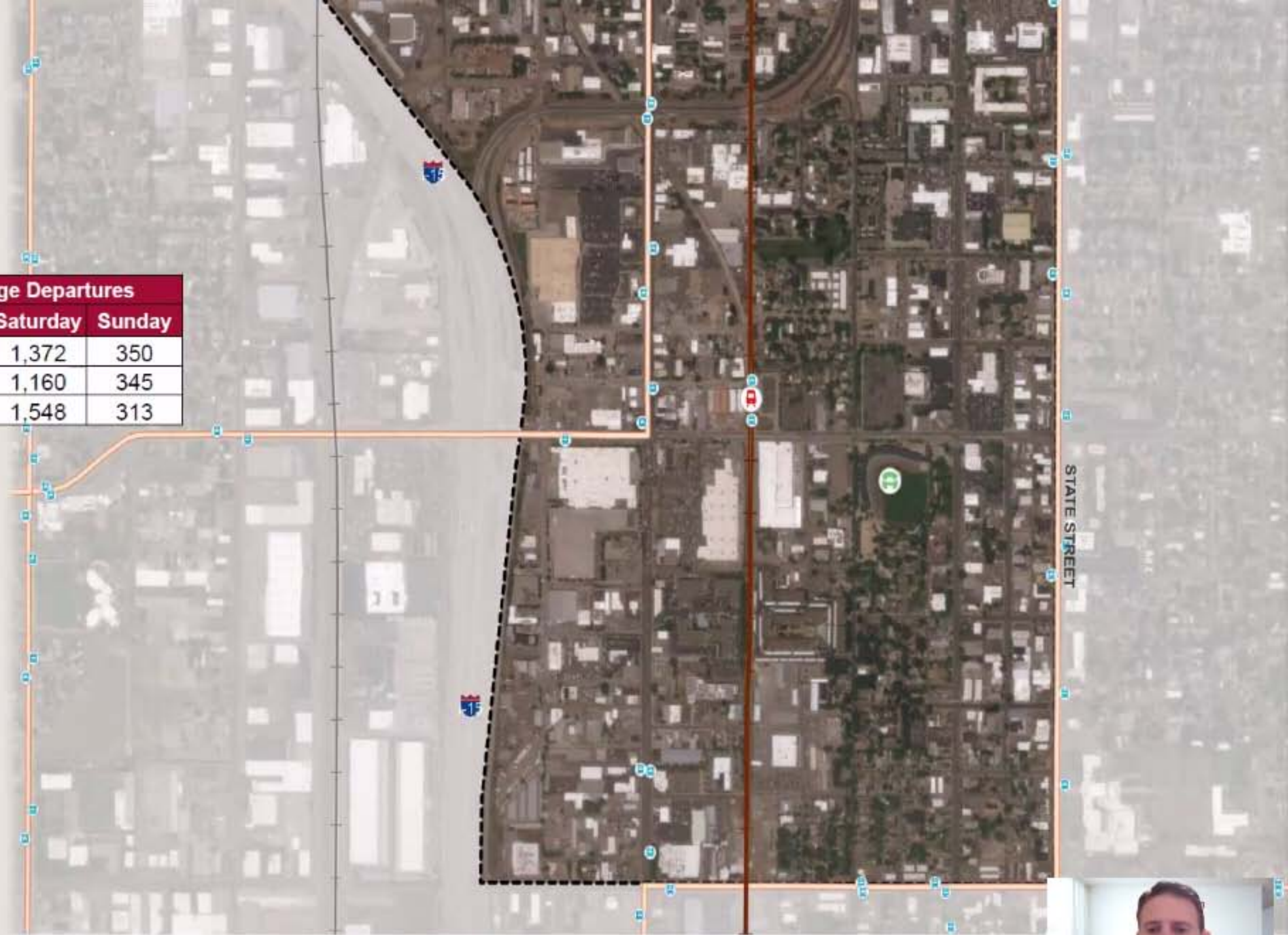


Transit Facilities

• REC

Existing

Year	Average Boardings			Average Departures		
	Weekday	Saturday	Sunday	Weekday	Saturday	Sunday
2017	2,196	1,413	365	1,905	1,372	350
2018	2,071	1,270	377	1,760	1,160	345
2019	1,860	1,620	356	1,533	1,548	313



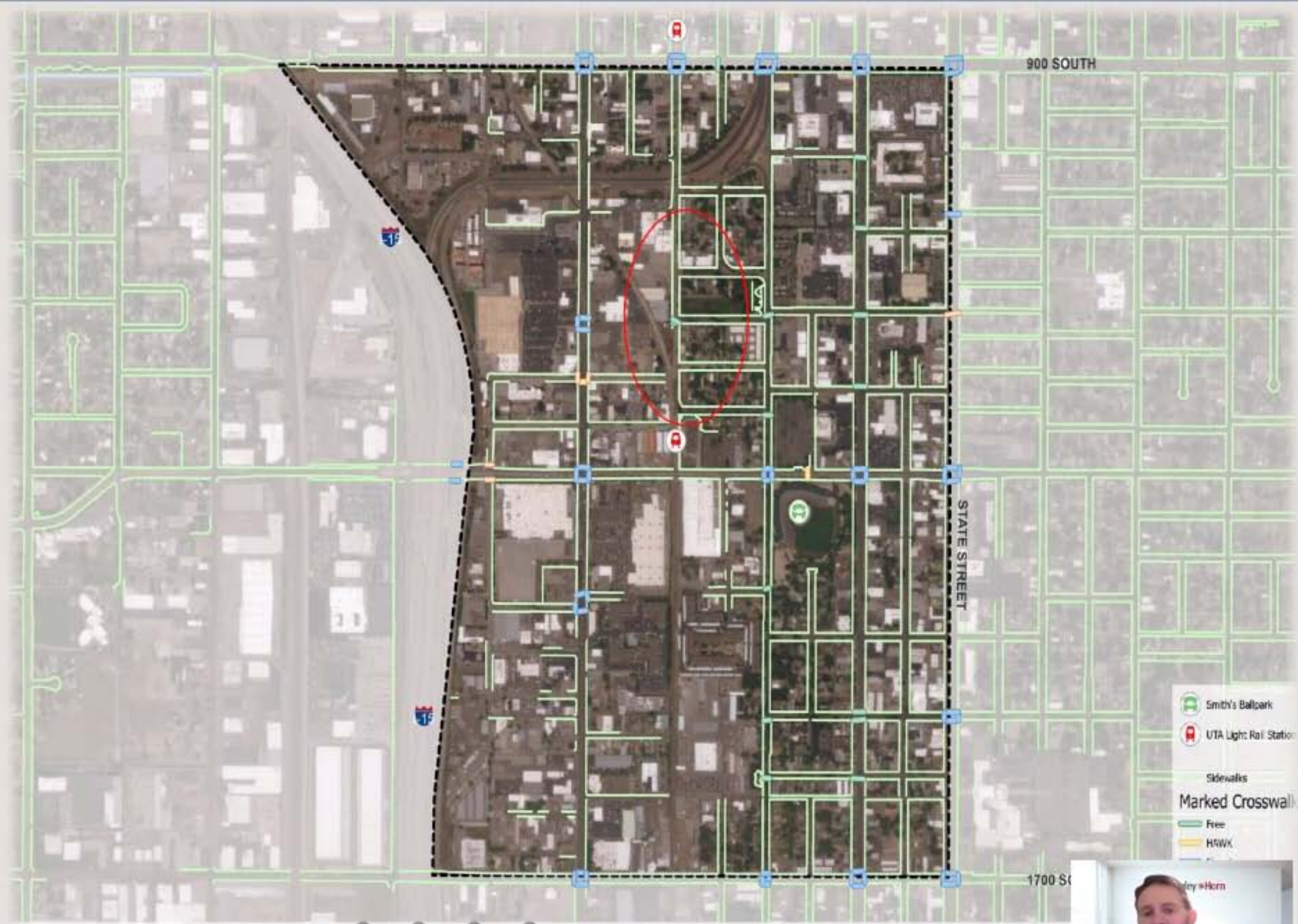
Existing Transit Network

Salt Lake City, UT



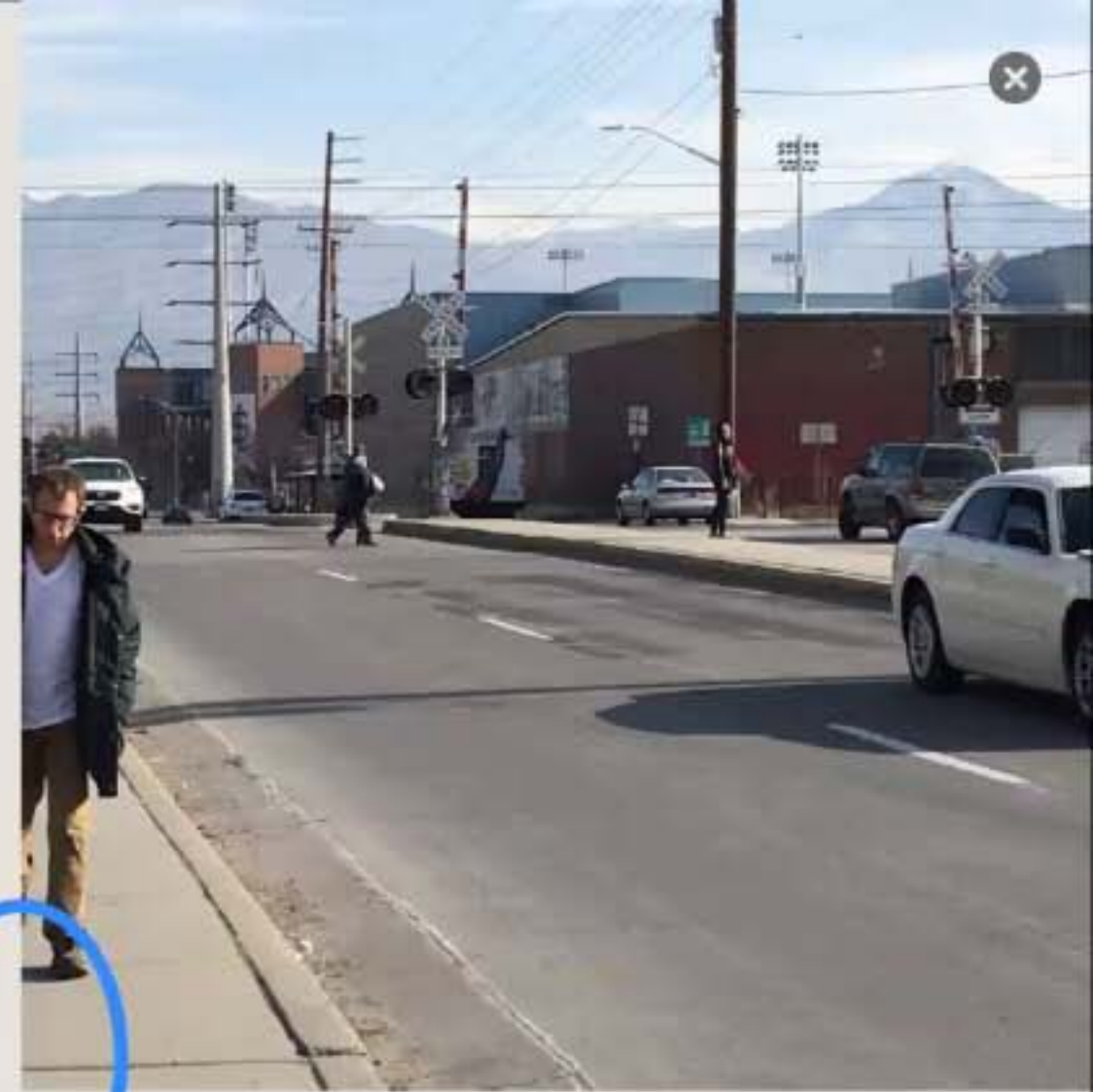
Pedestrian Facilities

• REC
Existing



Existing Pedestrian Network
Salt Lake City, UT





Pedestrian Issues

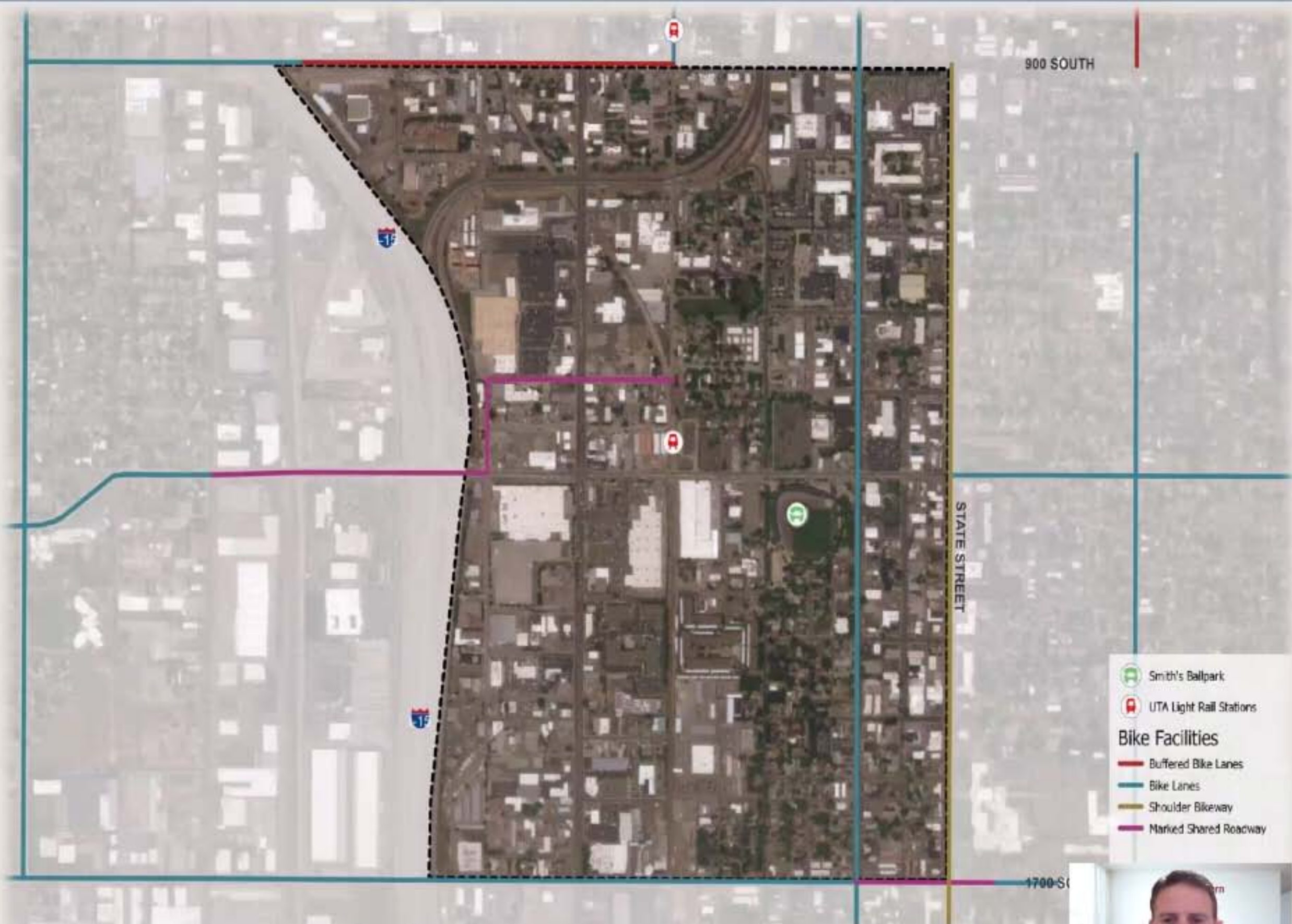
- Narrow Sidewalks and Gaps
- Sidewalk Obstructions



From Kevin to Everyone
Mid-Block Pedestrian Crossings
yes ma'am



• REC *Facilities*
Existing



- Smith's Ballpark
- UTA Light Rail Stations
- Bike Facilities**
- Buffered Bike Lanes
- Bike Lanes
- Shoulder Bikeway
- Marked Shared Roadway

Existing Bike Facilities
Salt Lake City, UT





Bike Issues

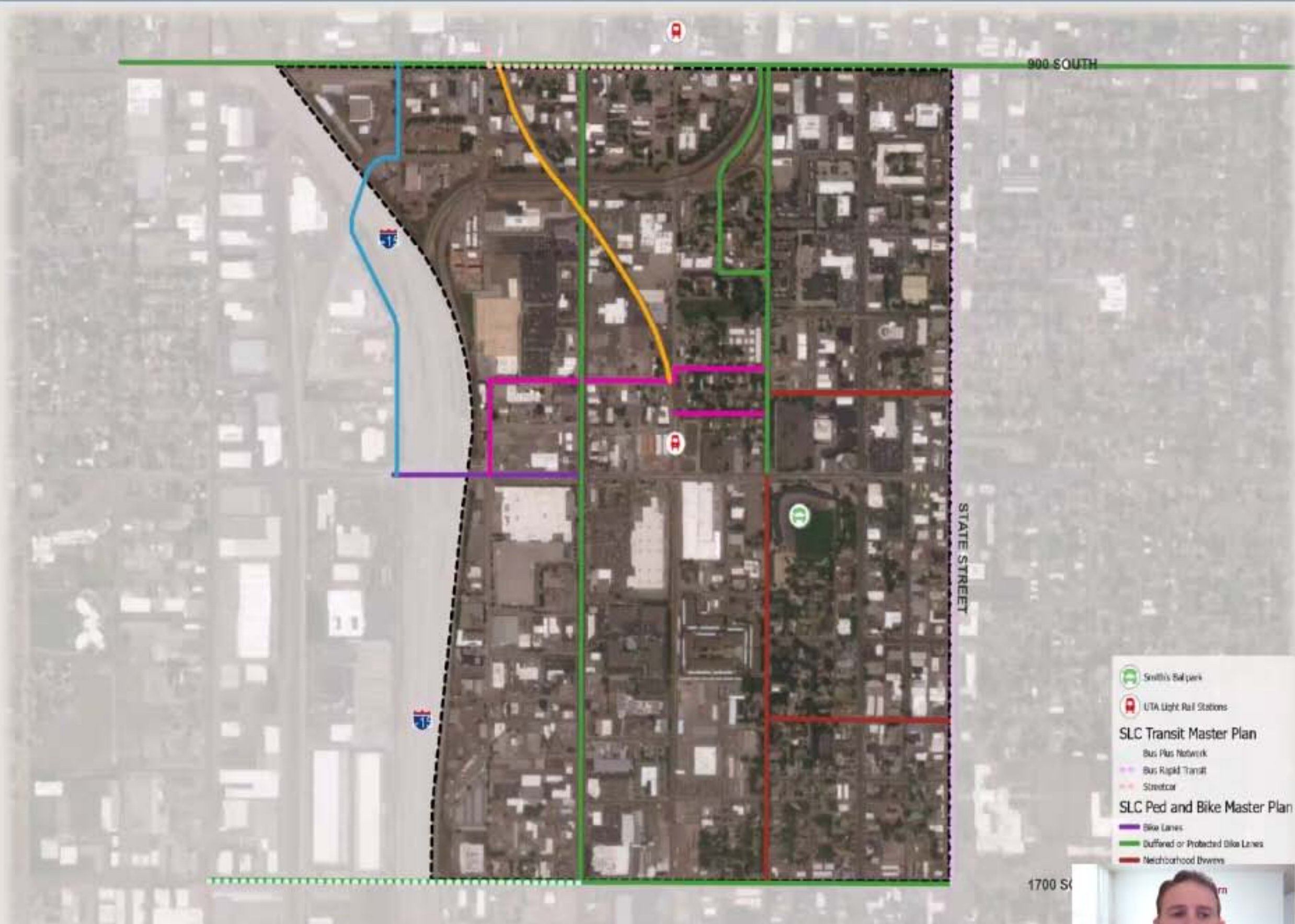
- 1300 South
- 300 West
- Improper Bike Racks
- Lack of Bike Parking Options



Future Recommended Projects

Various Sources

- Bus Rapid Transit
- Street Car
- Bike Lane
- Neighborhood Byways
- Shared Roadways
- Multi-Use Paths



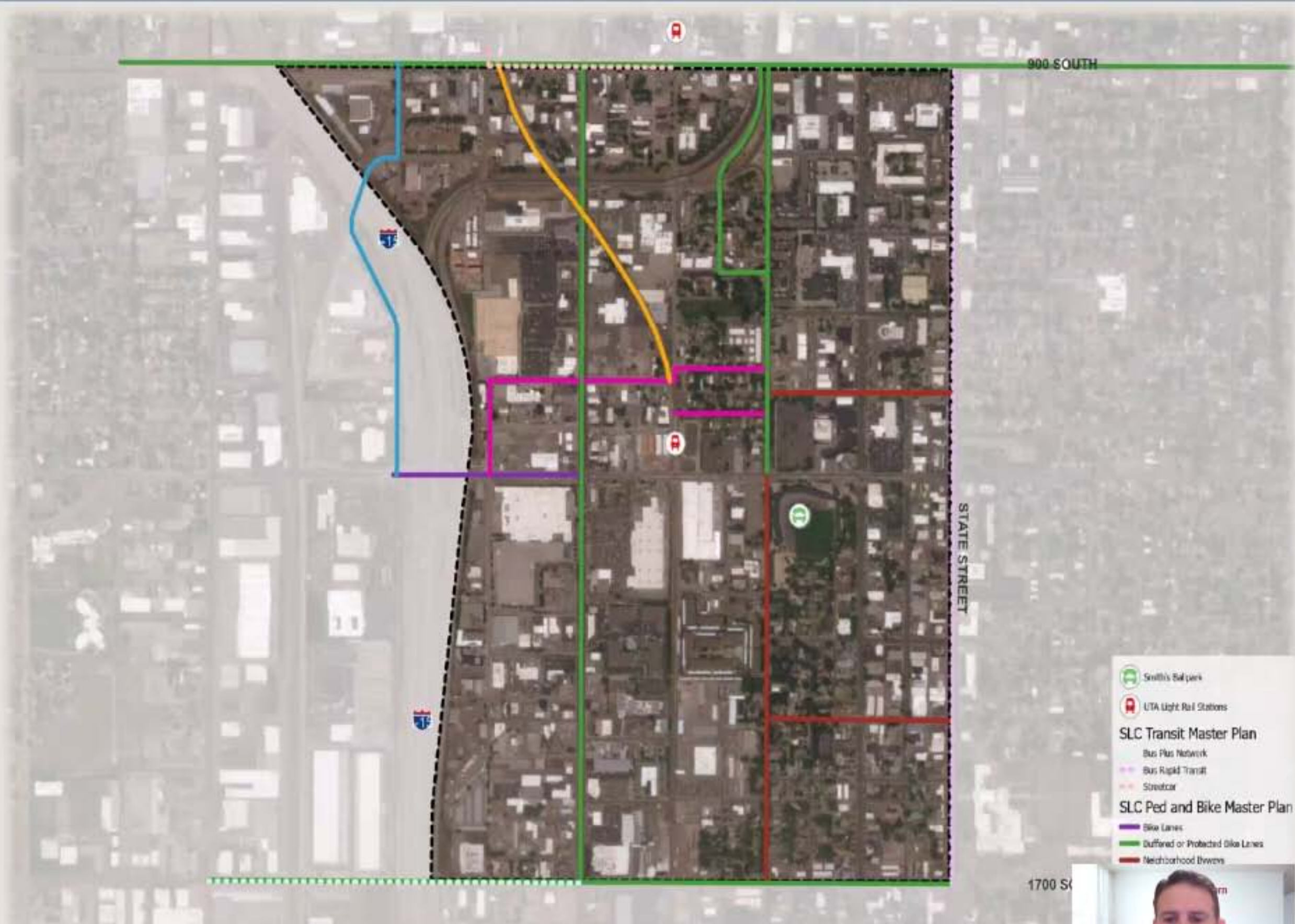
Future Recommended Projects
Salt Lake City, UT



Future Recommended Projects

Various Sources

- Bus Rapid Transit
- Street Car
- Bike Lane
- Neighborhood Byways
- Shared Roadways
- Multi-Use Paths



Future Recommended Projects
Salt Lake City, UT





EMERGING IDEAS



Zoom ▾

Leave

• REC

Improve connectivity to the west and north of the TRAX station

- Complete the bike network
- Enhance game day experience by closing streets and incentivizing transit
- Install 1300 South mid-block crossing west of the transit station
- Improve the pedestrian environment
 - Pedestrian level street lighting
 - Gateways at entries to neighborhood
 - Improve/widen sidewalks



Unmute



Start Video



Share



Participants



More