



MAY 2021 LILSA NEWSLETTER

PRESIDENT'S MESSAGE

WRITTEN BY BERNIE POULIN: LILSA CHAIR

LILSA has established three initiatives to focus on:

- Blue-green algae
- Flowering Rush
- Water Levels

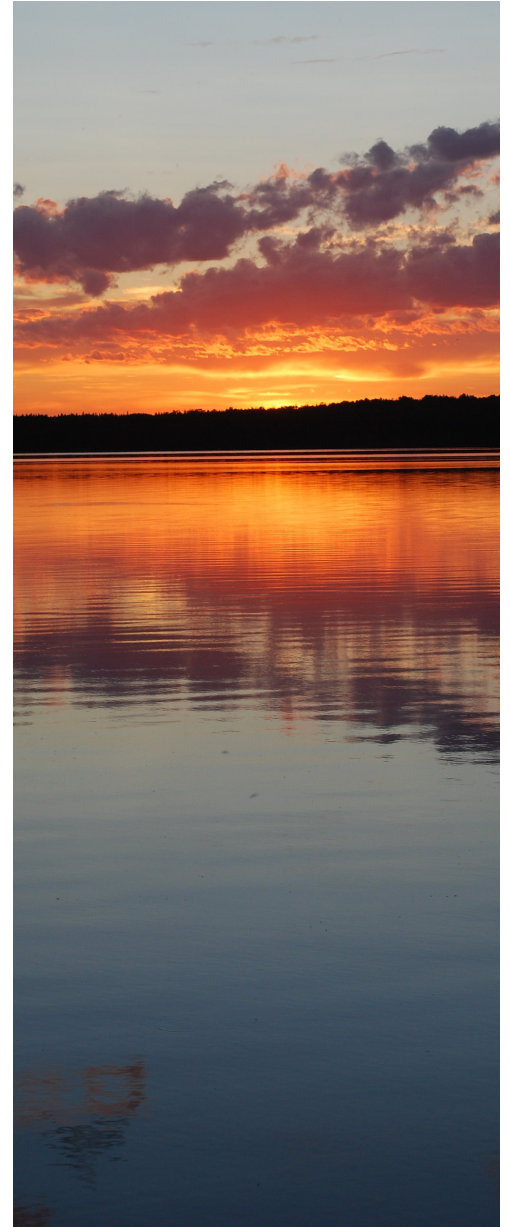
If you wish to help out on any of these committees contact us at lilsawaterquality@gmail.com

We are applying for a \$20,000 grant to better inform residents about our lake concerns. We have developed a survey for Lac Ste Anne and Lake Isle residents to fill out. Our primary goal of this survey is to find out the current knowledge base around water quality, overall lake health, and your major concerns surrounding it. Please go to the LILSA website, www.lilsa.ca, and click on "take the survey now" which is located on our home page. There is a draw for prizes for those who fill out the survey.

The Alberta Community Partnership (ACP) grant is in its third and final year of operation. We are hiring a 3-person team to continue monitoring, mapping, and digging Flowering Rush at the east end of Lake Isle. We will also monitor the Sturgeon River connecting our two lakes.

Please become a member of LILSA. Our annual family membership of \$20 helps support our initiatives. You can purchase a membership by e-transfer. Information is on our website. There is a draw for prizes for those who become members.

Please visit our website at www.lilsa.ca for more information or to become a member.



Did you know?

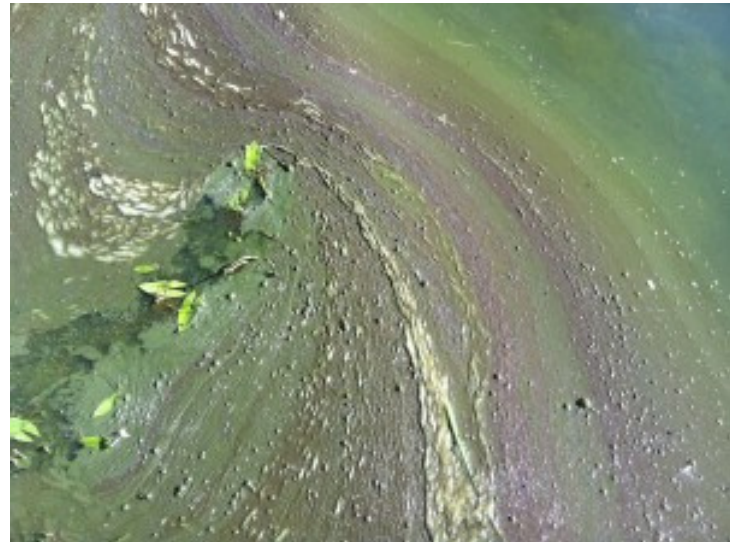
Lac Ste Anne and Isle Lake formed following the retreat of the Laurentian glacier, during the last major deglaciation event (approximately 10,700 to 13,500 years ago).

Wetlands around the lake provide flood control, water purification, water supply and storage, climate regulation, recreation opportunities and sustain biodiversity.

LILSA Subcommittees

BLUE-GREEN ALGAE

Blue-green Algae (cyanobacteria) blooms occur naturally in Alberta Lakes. The severity of these blooms can vary on how high the nitrogen and phosphorous nutrients are in our lakes. Some areas of human activity can cause excess nutrients to enter the lake. Some examples include seeping sewage, poor shoreline health, fertilizers, industrial effluents and agricultural runoff. Our goal as a committee is to work with all of these areas and highlight beneficial management practice and stewardship activities that will maintain and improved the lake water quality and health.



FLOWERING RUSH

Flowering Rush is a prohibitive noxious weed that displaces native vegetation such as rushes and cattails which are the primary habitat for wildlife and primarily waterfowl. It also interferes with boating and reduces property value.

Alberta Environment is investigating the spraying of 22 kilometres of flowering rush with the herbicide, "Amazypyr." This area is the shoreline on the west end of Lake Isle. Alberta Environment is continuing consultations with the Alexis Nakota Sioux First Nations regarding the chemical use on Lake Isle.

If residents plan to remove any flowering rush, please talk to our 3-person team first to find out how to safely remove and dispose of this invasive weed. Flowering Rush propagates through its rhizomes. These are tiny roots attached to the plant. Each little rhizome has the ability to reproduce a plant if it is released in the water. This is why we must be extremely cautious when removing the plant.

LAKE LEVELS

Lake levels, current and historical, appear to have a significant impact throughout the Sturgeon Watershed and specifically at Lac Ste Anne and Lake Isle. Initial indications show possible water level management may be advised at the outlet of Lake Isle, potentially providing solutions to two key issues: algae at Lake Isle and high water levels at Lac Ste Anne and downstream (St. Albert Etc.) We are compiling records at this time and further study and engagement is required.



Tips For Property Owners

1. PLANT OR RETAIN NATIVE PLANTS ALONG THE SHORELINE BETWEEN YOUR LAWN AND THE LAKE.
2. DON'T CUT DOWN AQUATIC PLANTS: LEAVE THE WEEDS AND REEDS IN THE LAKE.
3. INCREASE THE NUMBER AND DENSITY OF TREES AND SHRUBS ON YOUR PROPERTY.
4. DON'T USE FERTILIZERS, INSECTICIDES, HERBICIDES AND/OR FUNGICIDES ON YOUR PROPERTY.
5. ENSURE THAT YOUR SEPTIC SYSTEM IS WORKING PROPERLY = NO SEWAGE IN THE LAKE!
6. PROPERLY COMPOST BIODEGRADABLE WASTE.
7. USE PHOSPHATE-FREE SOAP: SHAMPOO, LAUNDRY, HAND AND DISH SOAP.
8. ENSURE ALL CHEMICALS ARE STORED PROPERLY.
9. PROPERLY FUEL BOATS AND LAWN EQUIPMENT TO AVOID POLLUTING THE LAKE.
10. PROPERLY DISPOSE OF ANIMAL WASTE.
11. CONSERVE WATER - USE LOW-FLOW TOILETS AND SHOWERHEADS, MINIMIZE WATERING OF THE LAWN.
12. CLEAN, DRAIN AND DRY YOUR BOAT TO REDUCE THE SPREAD OF INVASIVE SPECIES AND PLANTS.
13. LET YOUR FRIENDS AND NEIGHBOURS KNOW WHAT YOU ARE DOING TO HELP THE LAKE.
14. READ THE GREEN ACREAGES GUIDE TO FIND OUT MORE WAYS TO MAKE YOUR PROPERTY ENVIRONMENTALLY FRIENDLY. AVAILABLE AT: WWW.LANDSTEWARDSHIP.ORG/GREEN-ACREAGES-GUIDE
16. BECOME A MEMBER OF LILSA! MEMBERSHIPS ARE AVAILABLE AT WWW.LILSA.CA



**Visit lilsa.ca
for more
information**