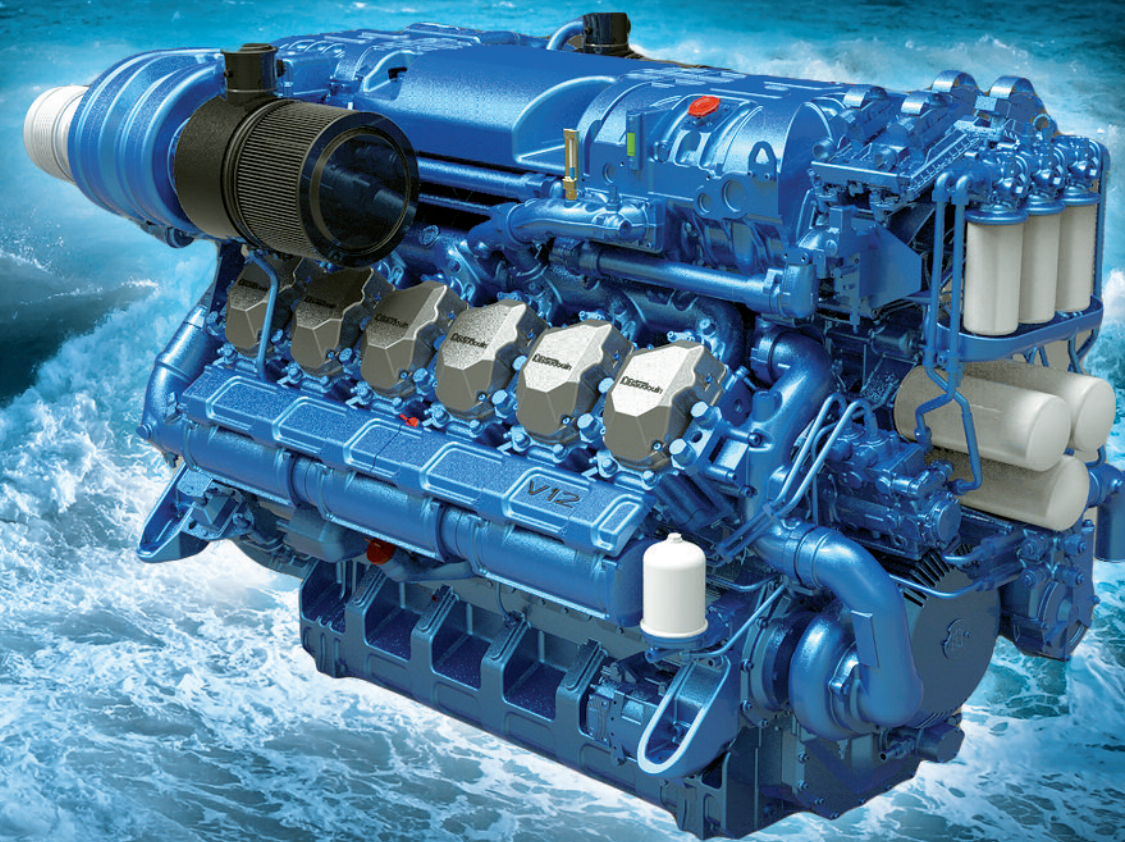


M26.3

The new marine power

IC 203/4 - August 2014 edition - Moteurs Baudouin reserves the right to modify these specifications without notice. Documents not contractual.



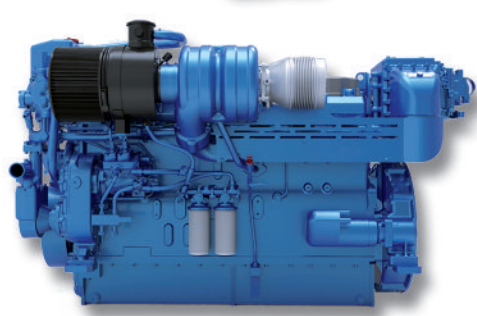
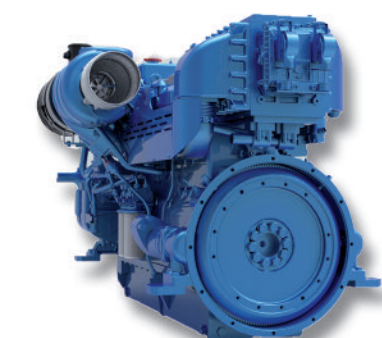
Société Internationale des Moteurs Baudouin
Technoparc du Brégadan
13260 Cassis
www.moteurs-baudouin.com

SAIL DIFFERENT

Product Preview

SAIL DIFFERENT

6 M26.3



- **Marine spirit since 1918**
 - Service Inspection engine block hatches
 - Full maintenance accessibility
 - Casting built in circuits for simplified design

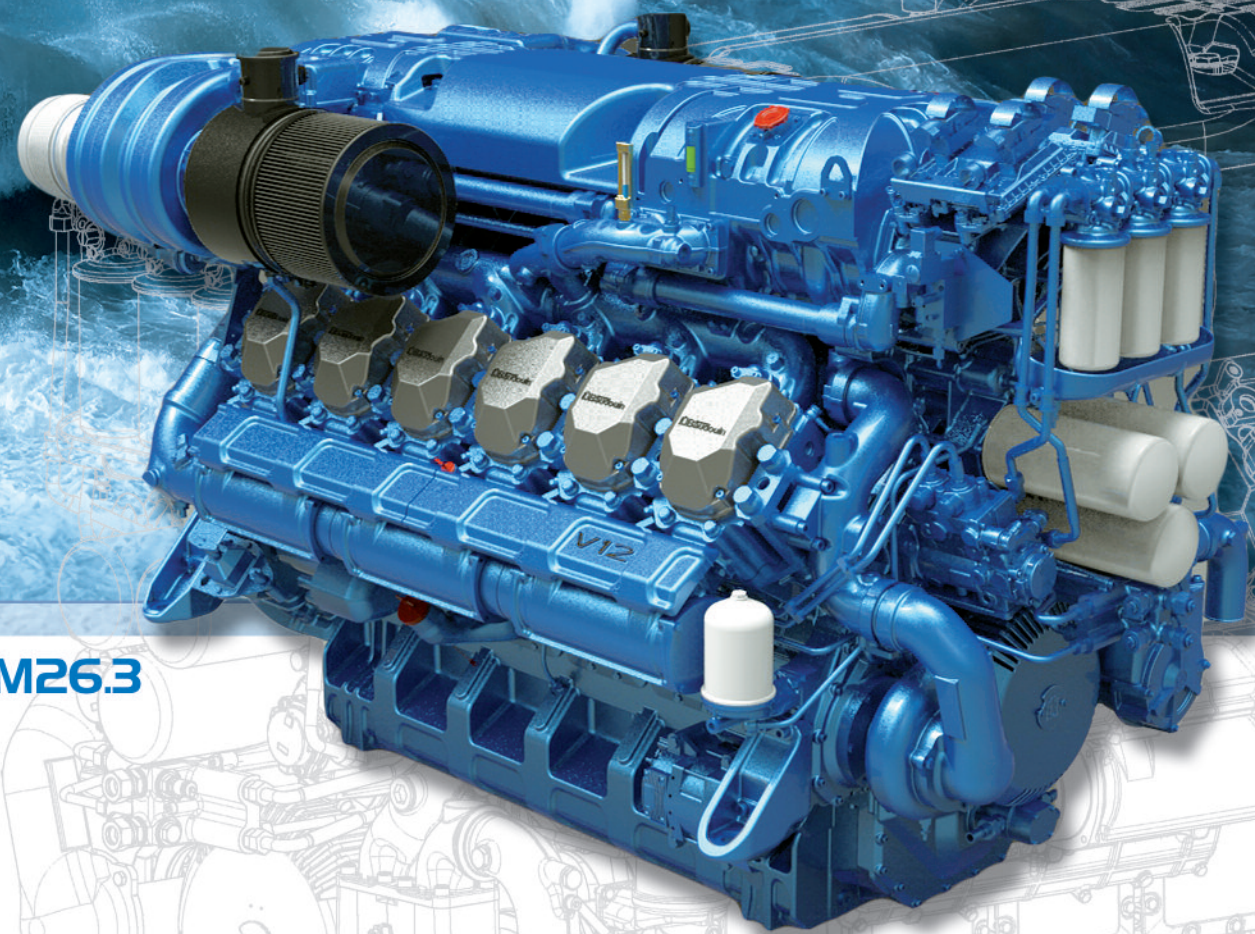
- **Performance**
 - 441 to 1214 kW (600 to 1650 hp)
 - Heavy duty power up to 1030 kW (1400 hp)
 - The best continuous power to weight ratio

- **Technology**
 - Modular concept with less components
 - New casting material for a durable marine power
 - Electronic injection redundancy unique feature

- **Life cycle**
 - A low fuel specific consumption standard
 - Extended maintenance schedule
 - Service friendly philosophy with less consummable parts (tubular heat exchangers, no flexible hose)

- **Environment**
 - Noise reduction concept technology
 - Exhaust emission compliant with all marine and inland waterways regulations
 - IMO Tier III - EPA Tier IV ready

12 M26.3



	6 M26.3	8 M26.3	12 M26.3
Configuration	6 cylinders in line	8V at 90°	12V at 90°
Displacement	15.9 l	21.2 l	31.8 l
Dry weight (lbs)	3935	5456	7088
Ratings (kW/hp at rpm)	P1	441/600 at 1800	600/805 at 1800
	P2	515/700 at 2000	690/925 at 2100
	P3	551/750 at 2100	746/1000 at 2200
	P4	600/805 at 2200	846/1135 at 2300

	P1	P2	P3	P4
Application	Unrestricted continous	Continuous	Intermittent	High performance
Engine load variations	Very little or none	Continuous	Important	Very important
Mean engine load factor	80 to 100%	30 to 80%	50%	30%
Annual working time	More than 5000 h	3000 to 5000 h	1000 to 3000 h	Less than 1000 h
Time at full load	Unlimited	8 h each 12 h	2 h each 12 h	1 h each 12 h