

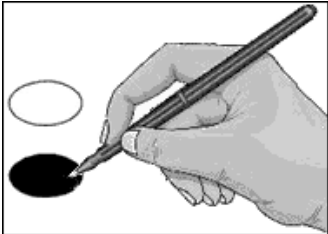
Sample Ballot Wayne County, North Carolina November 3, 2020	<div style="border: 1px solid black; width: 100%; height: 30px;"></div>	B0008
---	---	------------------

BALLOT MARKING INSTRUCTIONS:

A. With the marking device provided or a black ball point pen, completely fill in the oval to the left of each candidate or selection of your choice as shown.

B. Where authorized, you may write in a candidate by filling in the oval and writing the name on the Write-in line.

C. If you tear, deface or wrongly mark this ballot, return it to request a replacement.



FEDERAL OFFICES	STATE OFFICES	
President and Vice President of the United States (You may vote for ONE)	NC Governor (You may vote for ONE)	NC Commissioner of Labor (You may vote for ONE)
<input type="radio"/> Donald J. Trump <input type="radio"/> Michael R. Pence Republican	<input type="radio"/> Al Pisano Constitution	<input type="radio"/> Josh Dobson Republican
<input type="radio"/> Joseph R. Biden <input type="radio"/> Kamala D. Harris Democrat	<input type="radio"/> Roy Cooper Democrat	<input type="radio"/> Jessica Holmes Democrat
<input type="radio"/> Don Blankenship <input type="radio"/> William Mohr Constitution	NC Lieutenant Governor (You may vote for ONE)	NC Secretary of State (You may vote for ONE)
<input type="radio"/> Howie Hawkins <input type="radio"/> Angela Walker Green	<input type="radio"/> Mark Robinson Republican	<input type="radio"/> E.C. Sykes Republican
<input type="radio"/> Jo Jorgensen <input type="radio"/> Jeremy (Spike) Cohen Libertarian	<input type="radio"/> Yvonne Lewis Holley Democrat	NC Superintendent of Public Instruction (You may vote for ONE)
<input type="radio"/> Write-in	NC Attorney General (You may vote for ONE)	<input type="radio"/> Catherine Truitt Republican
US Senate (You may vote for ONE)	<input type="radio"/> Jim O'Neill Republican	NC Treasurer (You may vote for ONE)
<input type="radio"/> Thom Tillis Republican	<input type="radio"/> Josh Stein Democrat	<input type="radio"/> Ronnie Chatterji Democrat
<input type="radio"/> Shannon W. Bray Libertarian	NC Auditor (You may vote for ONE)	<input type="radio"/> Dale R. Folwell Republican
<input type="radio"/> Cal Cunningham Democrat	<input type="radio"/> Anthony Wayne (Tony) Street Republican	NC Supreme Court Chief Justice Seat 1 (You may vote for ONE)
<input type="radio"/> Kevin E. Hayes Constitution	<input type="radio"/> Beth A. Wood Democrat	<input type="radio"/> Cheri Beasley Democrat
US House of Representatives District 1 (You may vote for ONE)	NC Commissioner of Agriculture (You may vote for ONE)	<input type="radio"/> Paul Newby Republican
<input type="radio"/> Sandy Smith Republican	<input type="radio"/> Steve Troxler Republican	NC Supreme Court Associate Justice Seat 2 (You may vote for ONE)
<input type="radio"/> G. K. Butterfield Democrat	<input type="radio"/> Jenna Wadsworth Democrat	<input type="radio"/> Phil Berger, Jr. Republican
NC Commissioner of Insurance (You may vote for ONE)	NC Commissioner of Insurance (You may vote for ONE)	<input type="radio"/> Lucy Inman Democrat
<input type="radio"/> Mike Causey Republican	<input type="radio"/> Wayne Goodwin Democrat	Continue Voting next side ➔
- VOTE BOTH SIDES -	North Carolina	Ballot Style B0008

SAMPLE BALLOT

SAMPLE BALLOT

SAMPLE BALLOT

SAMPLE BALLOT

SAMPLE BALLOT

SAMPLE BALLOT

SAMPLE BALLOT

SAMPLE BALLOT

SAMPLE BALLOT

SAMPLE BALLOT

SAMPLE BALLOT

SAMPLE BALLOT

<p>NC Supreme Court Associate Justice Seat 4 (You may vote for ONE)</p> <p><input type="radio"/> Tamara Barringer Republican</p> <p><input type="radio"/> Mark Davis Democrat</p>	<p>NC House of Representatives District 21 (You may vote for ONE)</p> <p><input type="radio"/> Raymond E. Smith, Jr. Democrat</p> <p><input type="radio"/> Brent Heath Republican</p>	<p>Board of Commissioners District 3 (You may vote for ONE)</p> <p><input type="radio"/> Bevan J. Foster Democrat</p> <p><input type="radio"/> _____ Write-in</p>
	DISTRICT OFFICES	<p>Register of Deeds (You may vote for ONE)</p> <p><input type="radio"/> Constance Bryant Coram Democrat</p> <p><input type="radio"/> _____ Write-in</p>
<p>NC Court of Appeals Judge Seat 4 (You may vote for ONE)</p> <p><input type="radio"/> Tricia Shields Democrat</p> <p><input type="radio"/> April C. Wood Republican</p>	<p>NC District Court Judge District 8 Seat 2 (You may vote for ONE)</p> <p><input type="radio"/> Jon Sargeant Democrat</p>	NONPARTISAN OFFICES
<p>NC Court of Appeals Judge Seat 5 (You may vote for ONE)</p> <p><input type="radio"/> Lora Christine Cabbage Democrat</p> <p><input type="radio"/> Fred Gore Republican</p>	<p>NC District Court Judge District 8 Seat 3 (You may vote for ONE)</p> <p><input type="radio"/> Curtis Stackhouse Democrat</p>	<p>Board of Education At-Large (You may vote for ONE)</p> <p><input type="radio"/> Tommy Sanders</p> <p><input type="radio"/> Ven Faulk</p> <p><input type="radio"/> _____ Write-in</p>
<p>NC Court of Appeals Judge Seat 6 (You may vote for ONE)</p> <p><input type="radio"/> Gray Styers Democrat</p> <p><input type="radio"/> Chris Dillon Republican</p>	<p>NC District Court Judge District 8 Seat 4 (You may vote for ONE)</p> <p><input type="radio"/> Charles P. Gaylor III Democrat</p>	<p>Board of Education District 3 (You may vote for ONE)</p> <p><input type="radio"/> Patricia Burden</p> <p><input type="radio"/> Robert Freeman</p> <p><input type="radio"/> _____ Write-in</p>
<p>NC Court of Appeals Judge Seat 7 (You may vote for ONE)</p> <p><input type="radio"/> Reuben F. Young Democrat</p> <p><input type="radio"/> Jeff Carpenter Republican</p>	<p>NC District Court Judge District 8 Seat 5 (You may vote for ONE)</p> <p><input type="radio"/> Ericka Y. James Democrat</p>	<p>Soil and Water Conservation District Supervisor (You may vote for ONE)</p> <p><input type="radio"/> Imari Olliver</p> <p><input type="radio"/> Thomas Uzzell</p> <p><input type="radio"/> _____ Write-in</p>
<p>NC Court of Appeals Judge Seat 13 (You may vote for ONE)</p> <p><input type="radio"/> Chris Brook Democrat</p> <p><input type="radio"/> Jefferson G. Griffin Republican</p>	<p>NC District Court Judge District 8 Seat 6 (You may vote for ONE)</p> <p><input type="radio"/> Greg Rouse Democrat</p> <p><input type="radio"/> Annette W. Turik Republican</p>	End of Ballot
<p>NC State Senate District 7 (You may vote for ONE)</p> <p><input type="radio"/> Jim Perry Republican</p> <p><input type="radio"/> Donna Lake Democrat</p>	COUNTY OFFICES	
	<p>Board of Commissioners At-Large (You may vote for ONE)</p> <p><input type="radio"/> Alicia Britt Pierce Democrat</p> <p><input type="radio"/> Wayne Aycock Republican</p>	
	- VOTE BOTH SIDES -	
	North Carolina	Ballot Style B0008