



C. NELSON MFG

Genuine Nelson...Certified Cool

NELSON Treasure Chests Double and Single Row Dipping Cabinets

Perfect preservation of product quality and flavor...continuous failure-free operation that virtually eliminates maintenance...absolute minimum of operating costs...these are the advantages offered by Nelson's superior design and construction which can only be measured over long periods in terms of service and

value. Since 1898, the industry's finest equipment for the protection of quality and flavor in ice cream and frozen foods.



Protect your quality and your investment.

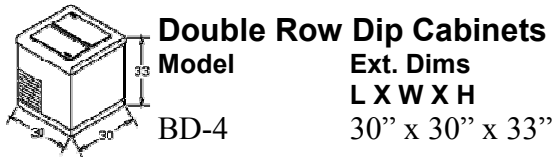
C. NELSON MFG

265 N. Lake Winds Pkwy
Oak Harbor, OH 43449
www.cnelson.com

Phone: 800-922-7339

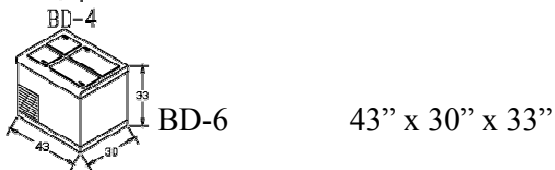
Fax: 419-898-4098

E-mail: sales@cnelson.com

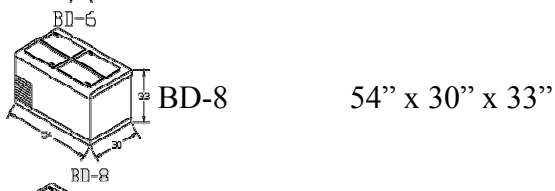


Double Row Dip Cabinets

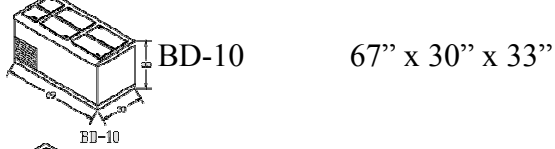
Model **Ext. Dims**
L X W X H
 BD-4 30" x 30" x 33"



BD-6 43" x 30" x 33"



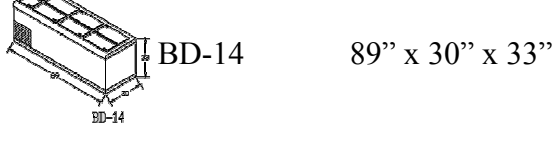
BD-8 54" x 30" x 33"



BD-10 67" x 30" x 33"

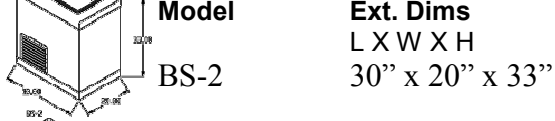


BD-12 82" x 30" x 33"



BD-14 89" x 30" x 33"

Single Row Dip Cabinets 20" Depth



Model **Ext. Dims**
L X W X H
 BS-2 30" x 20" x 33"



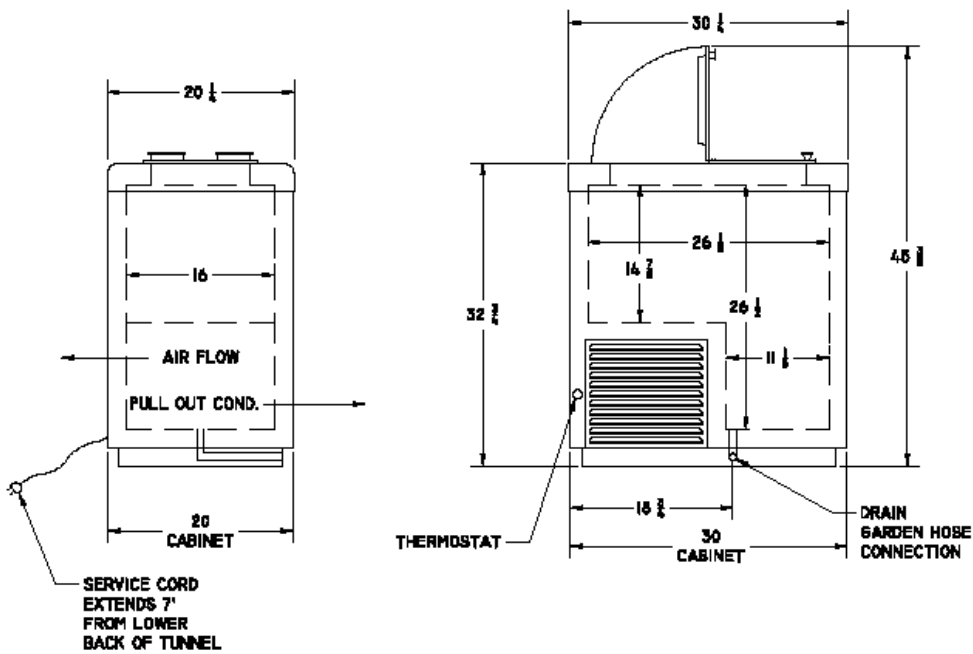
BS-4 54" x 20" x 33"

Specifications	BD4	BD6	BD8	BD10	BD12	BD14	BS2	BS4
SHIP WT.	225	275	315	375	430	460	175	240
CuFt CAPACITY	8.0	13	17.5	22.5	27.5	29.5	4.8	10.5
NBR FACINGS	5	7	10	12	14	16	2	5
TOTAL NBR TUBS	8	13	17	22	27	29	4	9
COMPRESSOR	1/3 hp	1/3 hp	1/3 hp	1/3 hp	Sm 1/2 hp	Sm 1/2 hp	1/5 hp	1/5 hp
AMPS	8	8	8	8	11	11	5	5
ELECTRIC	115 v.	115v.	115v	115v	115v	115v	115v	115v

C. NELSON MFG

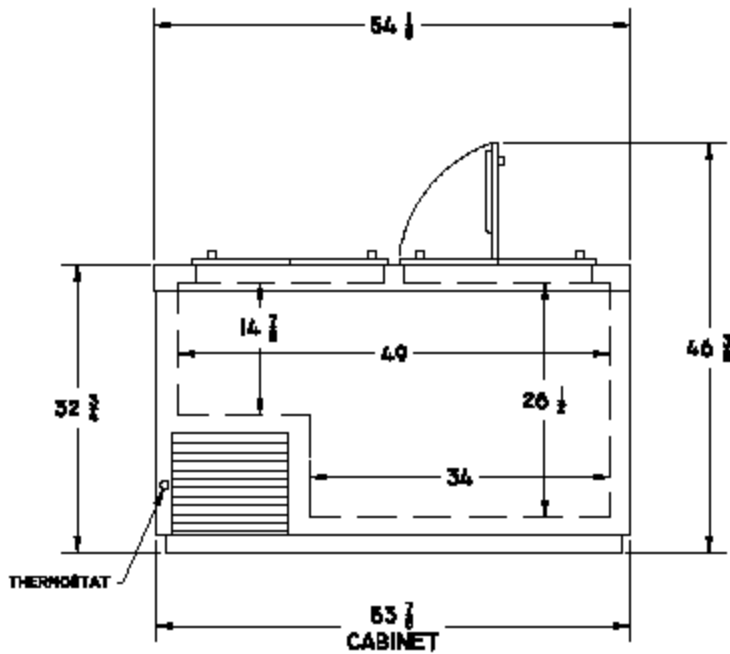
Genuine Nelson...Certified Cool

265 N. Lake Winds Pkwy
 Oak Harbor, OH 43449
www.cnelson.com
 Phone: 800-922-7339
 Fax: 419-898-4098
 E-mail: sales@cnelson.com



Nelson Model BS-End View

BS2



Nelson Model BS4

SPECIFICATIONS:

- One piece 22 ga. 304 stainless steel, all corners welded (no corner pieces or raw edges, ever),
- Galvanized steel reinforced sub-top beneath the stainless top,
- Anti-condensate heater wires on galvanized sub-top to prevent condensation on cabinet top,
- Galvanized steel interior. Optional 22 ga. 304 stainless steel exterior and 24 ga. stainless steel interior,
- Copper tubing cold wall type evaporator attached to liner wall,
- Forced air condensing unit (clog free design on all BD models) on glide-out base for efficient operation and built-in applications,
- Base of cabinet to be constructed of 16 ga. Galvanized steel,
- Poured-in place urethane foam insulation with a minimum "K" factor of .13, Lids to be stainless steel top with poured urethane foam insulation and hinged in the center with rubber handles, Freezer lid gaskets to be of a molded, one piece, high impact grade ABS plastic, Cabinet to be equipped with a 7-ft power cord, 3 wire, grounded, dead front construction,
- Unit to be NSF & UL &ETL approved.

C. NELSON MFG

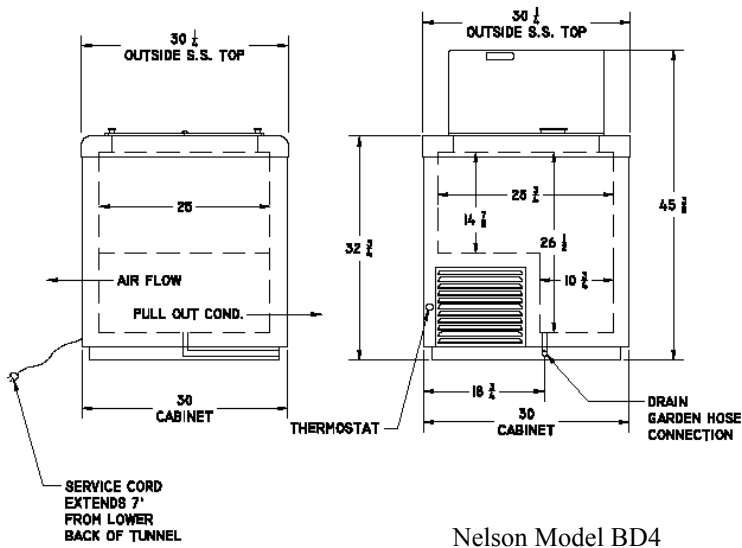
Genuine Nelson...Certified Cool

265 N. Lake Winds Pkwy
Oak Harbor, OH 43449
www.cnelson.com

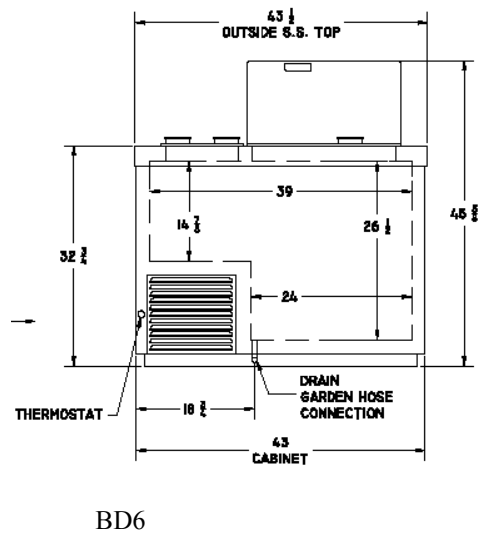
Phone: 800-922-7339

Fax: 419-898-4098

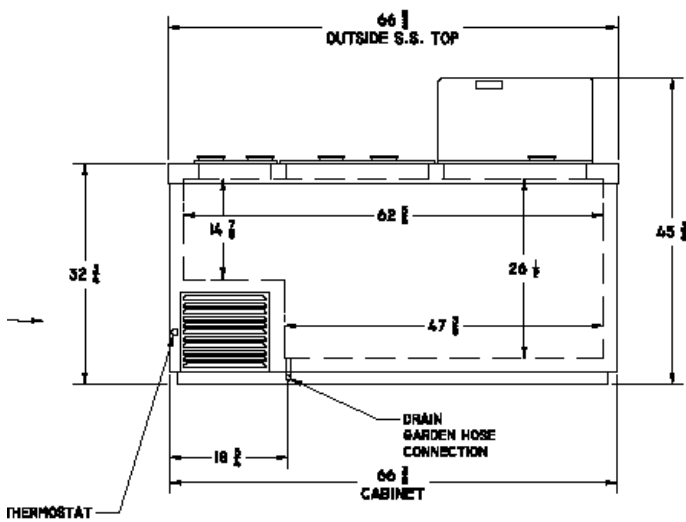
E-mail: sales@cnelson.com



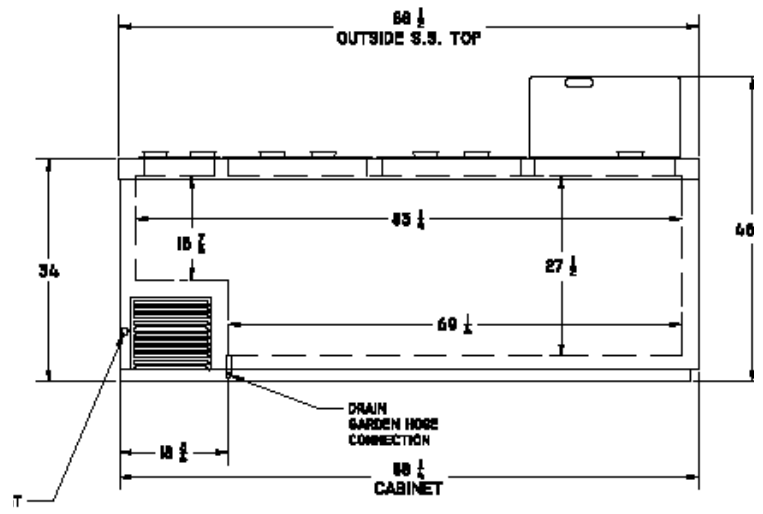
Nelson Model BD4



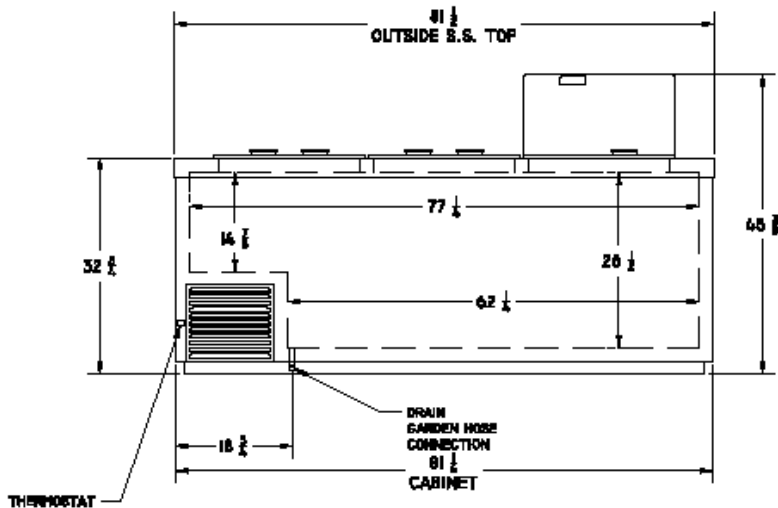
BD6



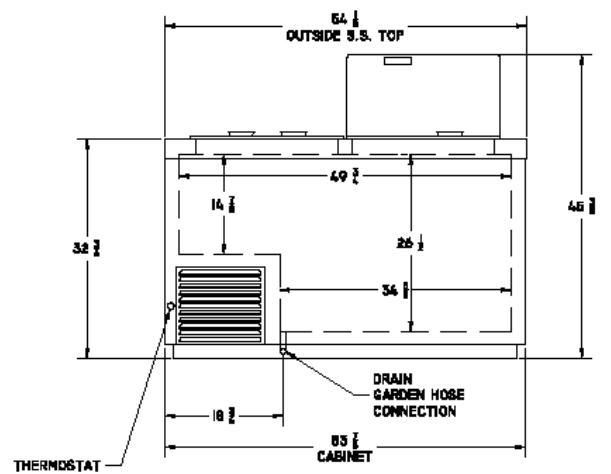
Nelson Model BD10



BD12



Nelson Model BD14



BD8

C. NELSON MFG

Genuine Nelson...Certified Cool

265 N. Lake Winds Pkwy
Oak Harbor, OH 43449
www.cnelson.com

Phone: 800-922-7339
Fax: 419-898-4098

E-mail: sales@cnelson.com