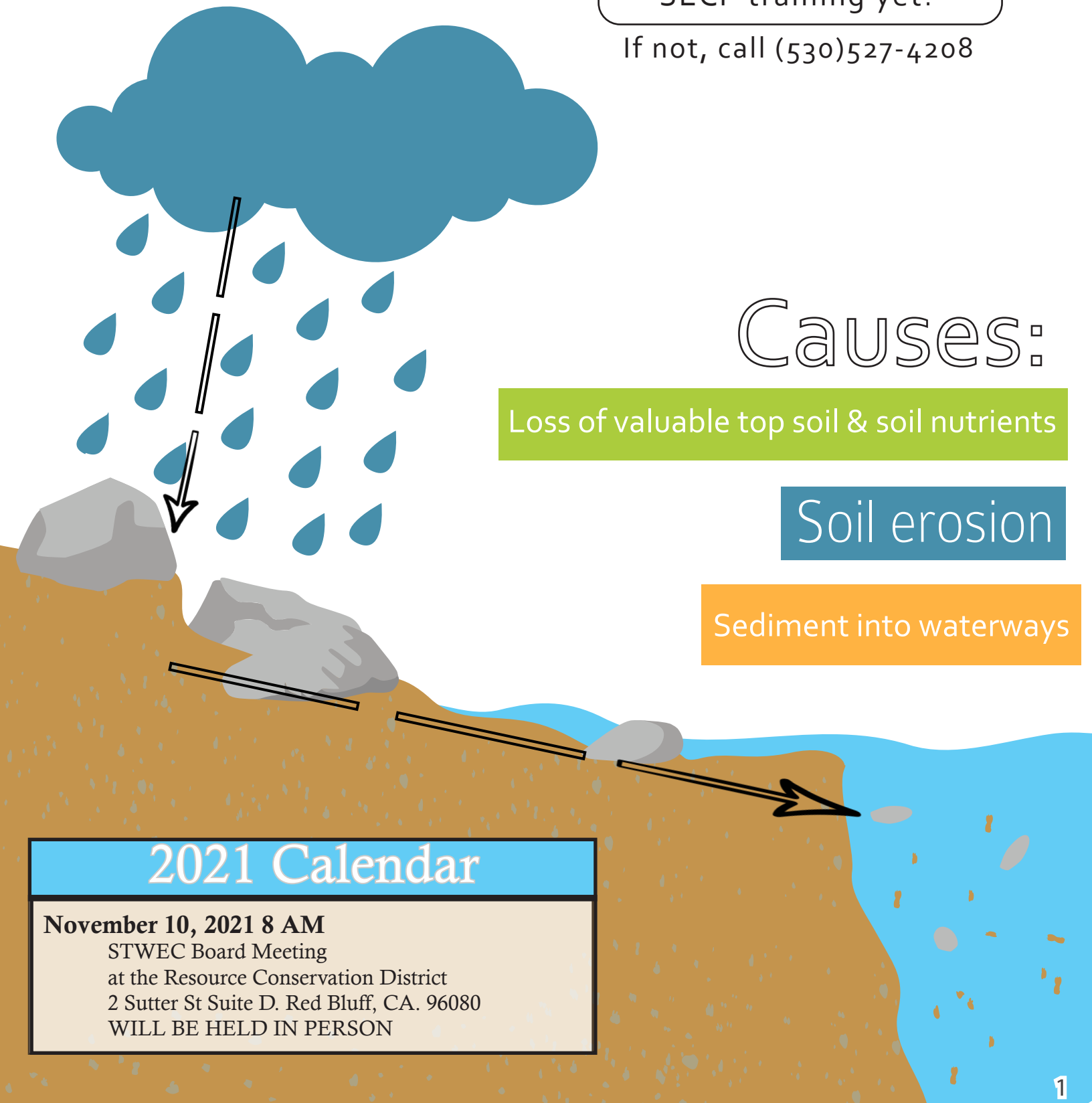


Be mindful of your Sediment and Erosion Control Plan
& assure your plan is in place!

Have you completed your
SECP training yet?

If not, call (530)527-4208



Causes:

Loss of valuable top soil & soil nutrients

Soil erosion

Sediment into waterways

2021 Calendar

November 10, 2021 8 AM
STWEC Board Meeting
at the Resource Conservation District
2 Sutter St Suite D. Red Bluff, CA. 96080
WILL BE HELD IN PERSON

Meet the STWEC Staff!

New Board Member

Glenn Hawes



Director

Glenn is a fourth generation Northern Californian farmer. His great grandfather started farming in the area in 1863, and Glenn is handing the torch fown to his own son. Glenn has been an active part of the community his own life from attending anderson high school in the 50's, serving over 20 years on the Farm Credit Board of Directors, the Shasta County Fair Board for 10 years, the ASCS committee for nearly 20 years, serving as a Shasta County Supervisor for 4 years, and many other leadership positions too extensive and lengthy to include. We are excited to have Glenn and his expertise joining our board.

Jon Barrett

“I was born and raised in Southern California, spent some time in school in Wyoming, and then returned to the Golden State. I enjoy Tehama County for its abundant natural resources and many recreational opportunities.”

Jon was born and raised in Southern California. After graduation from high school, he spent some time going to school in Laramie, Wyoming before the cold forced him back to the “Golden State.” Jon graduated with honors from Cal State Northridge with a degree in Business and Marketing. Prior to joining the RCDTC, Jon’s private sector career included developing large scale projects and running multimillion dollar budgets.



RCDTC District Manager

Rob Rianda



STWEC Coordinator

“Growing up on a large ranch gave me a great appreciation for the complexities and rewards of land ownership. Tehama County has wide open spaces and many hunting and fishing opportunities on both public and private lands.”

Rob has many important skills centered around project management, energy efficiency, and water conveyance. He has previously worked as a Residential Energy Consultant, as co-owner of a Hollister business, and as manager of canal operations and maintenance for the Tehama-Colusa Canal Authority. Rob now handles wildfire readiness and irrigated lands programs for the RCD.

Jennifer Zirkle

“I am often found happily at home on the back patio overlooking the usually dry Blue Tent Creek. I like to keep a close eye on the wildlife I commonly refer to as “my” deer, turkey, rabbit and quail. I’ve lived in many states, but nobody is as proud as I am to be a native Red Bluffian.”

Jennifer was born and raised in Red Bluff. After attending Cal Poly, SLO she spent many years in the Midwest and Pacific Northwest. However, Red Bluff was always home, and she returned to Red Bluff permanently in 2015. Jennifer is active in Tehama County as chairperson for Tehama County Fireworks Committee and a board member of Red Bluff Rotary.



STWEC Membership Coordinator

Stephanie Dickerson



Administrative Assistant

“I absolutely love the Tehama/Shasta County landscape! Most every weekend you can find me hiking, camping or dirt-bike riding with my family. I cannot think of a better way to spend my weekend than outside enjoying everything this area has to offer. My hope is to instill my love of nature in my grandsons, all 9 of them!”

Stephanie was born and raised in the deserts of Southern California. After having children, she decided to move North to the greener part of the state. Tehama/Shasta Counties is where she decided to plant her roots. Being in the administrative/management world for over 25 years, she has many skills that will be utilized at the Resource Conservation District of Tehama County and is very excited to demonstrate those skills in the years to come.

Have Questions?

United States Environmental Protection Agency

The Environmental Protection Agency aims to protect human health and the environment. The U.S. EPA's Region IX office enforces federal laws that protect natural resources, including air, water and land. The Clean Water Act (CWA) establishes the basic structure for regulating discharges of pollutants into the waters of the United States and regulating quality standards for surface waters. Under the CWA, EPA has implemented pollution control programs.

California Environmental Protection Agency

Cal-EPA is the state's regulatory agency that enforces pollution control laws and oversees six other state entities including the Air Resources Board, the State Water Resources Control Board, and the Integrated Waste Management Board. The head of Cal-EPA is appointed by the governor and a member of the governor's cabinet. The Cal-EPA also operates under the CWA.

California State Water Resources Control Board

These are the state standards in effect also under the CWA. The State Water Resources Control Board (State Water Board) was created by the California State Legislature in 1967. The joint authority of water allocation and water quality protection enables the State Water Board to provide comprehensive protection for California's waters and water quality. Divisions: Drinking Water, Water Quality (ILRP), and Water Rights. This is where water curtailments come from.

Regional Water Resources Control Board

There are 9 Regional Water Quality Control Boards in the State Water Resources Control Board, and the STWEC program is under the Sacramento Valley Water Quality Coalition, which is under the Central Valley Regional Water Quality Control Board. Their mission is to develop and enforce water quality objectives and implementation plans that will best protect the beneficial uses of the State's waters, recognizing local differences in climate, and hydrology.

Water Associations & Groups

- *Northern California Water Association*
Lobbying organization that works to protect the region's water rights and supplies by implementing an integrated regional water management plan and by working with Congress, the Legislature, state and federal agencies and various stakeholders.
- *Association of California Water Agencies (ACWA)*
Membership organization that represents over 450 public water agencies in legislative matters, accounting for 90 percent of the water delivered in the state.
- *California Farm Bureau Federation*
Membership organization that represents agricultural interests throughout the state of California. Comprised of 53 county farm bureaus currently representing approximately 76,500 members in 56 counties.
- *Family Water Alliance*
A nonprofit educational corporation representing northern California interests in water rights, private property rights and proactive solutions to environmental issues.

California Agencies Involved in Water Interests

- *California Department of Water Resources*
California's Department of Water Resources protects, conserves and manages state water supplies, water resources planning and the construction and operation of the State Water Project.
- *California Chamber of Commerce*
Organization that works within state and federal politics to ensure fair legislation and a pro-business climate for California businesses.
- *U.C. Davis - Cooperative Education*
Provides Californians continuing education and scientific research and advice in addressing agricultural, natural resources, and environmental quality issues as they relate to water, soils, and the atmosphere.
- *Local Water Purveyor*
Irrigation districts and water providers.

President's Message

To my fellow agricultural members of STWEC,

We hope you are all well and harvesting a successful and bountiful crop. This month I have some difficult topics to share with you.

The first topic is the "fees" we all pay to the California State Water Resources Control Board (SWRCB). Your STWEC coalition, along with our umbrella coalition (Sacramento Valley Water Quality Coalition), and the Northern California Water Association (NCWA), have urged them to refrain from increasing fees to the members of sub-coalitions throughout the Central Valley Region. Still the SWRCB has increased the fees 16 cents per acre. In 2004 when the Program was initiated the per acre fee was 12 cents. In 2022 the fees will be \$1.28 per acre. The justification is that they deferred some increases incurred over the past few years and the State has negotiated a pay increase to their staff resulting in the need to increase revenues. We have urged the SWRCB to establish general fund budgeting to include at least \$10 million to offset the burden to growers. This is a State-wide concern, and not just for agriculture.

At November's Bi-monthly meeting your STWEC Board of Directors will review and establish the 2022 budget and we will do our absolute best to minimize negative economic impact to our members. Fortunately, the SVWQC and NCWA have convinced the State to reduce watershed monitoring which will result in some savings over previous annual costs.

The next issue we face is lack of enforcement by the SWRCB. As complying and paying members of the ILRP, we all have done our part to be responsible and meet the requirements imposed upon us. You may have knowledge of others who have thumbed their noses at the ILRP and not complied with the program as the rest of us have. It may appear that those of us who are compliant members are foolish to partake in any of this when others do not. We can only proudly say that we, as irrigating members, are showing the citizens of California that we support and are contributing to the efforts to deliver clean, healthy drinking water to all through our compliance and payment.

Finally, an explanation of our obligations as a Board and non-profit organization. We are ensuring that the water we apply to our crops is not having a negative impact to our surface watersheds and groundwater quality. Any water resources we apply to grow and sustain our commodities will return to our environment in some way, through runoff, seepage or evaporation. We have no oversight or influence whatsoever on water rights or diversions if that's what you do. Your contact to address the recent curtailment notices will be to the Water Rights Division of the SWRCB, not STWEC.
Ron Keown, President STWEC Board of Directors



Shasta Tehama Watershed Education Coalition

PO Box 933
Red Bluff CA 96080

Phone: 530-527-4208

