

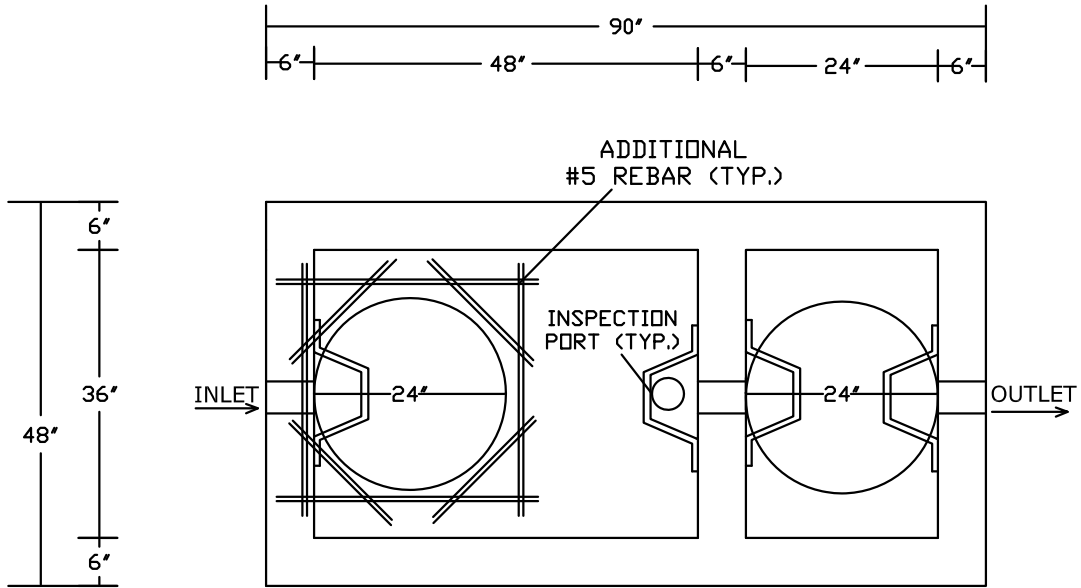
**PEERLESS CONCRETE PRODUCTS CO.**  
*SINCE 1959*

**Index**

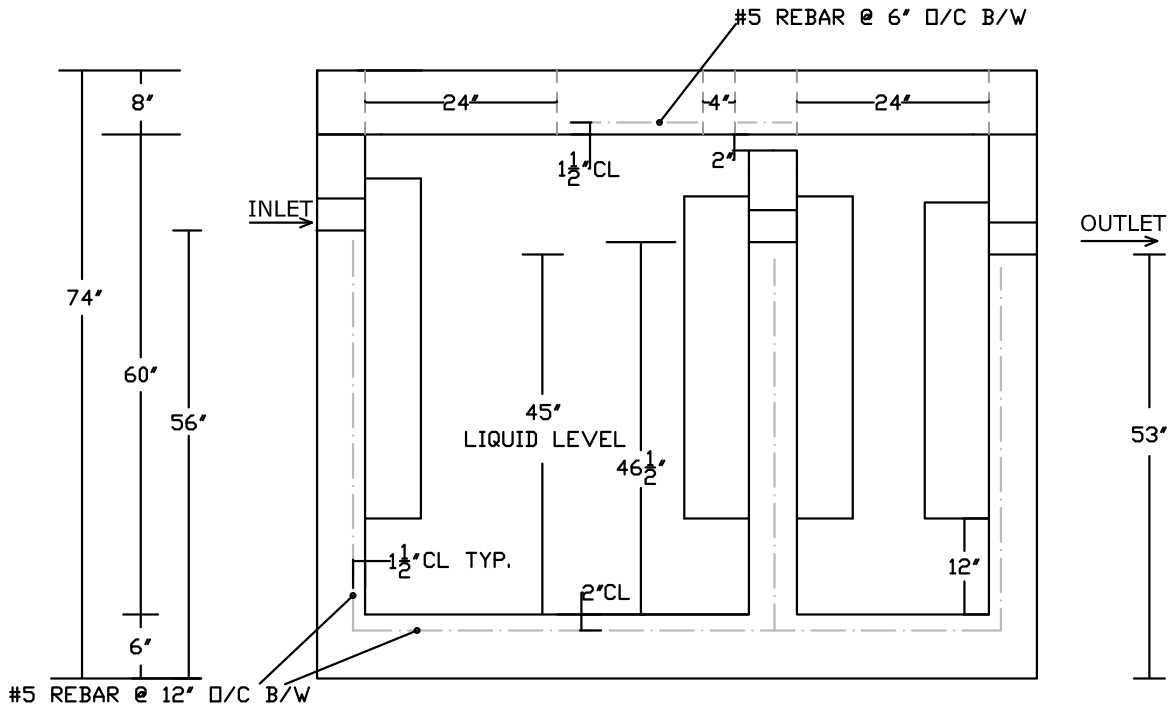
<b>Item</b>	<b>Page</b>
<b><u>Section G</u></b> - <i>Grease Traps/Oil Separators (Index)</i>	G-1
500 Gallon Heavy Duty Grease Trap/Oil Separator (2 Compartment)	G-2
1000 Gallon Heavy Duty Grease Trap/Oil Separator (2 Compartment)	G-3
1250 Gallon Heavy Duty Grease Trap/Oil Separator (2 Compartment)	G-4
1500 Gallon Heavy Duty Grease Trap/Oil Separator (2 Compartment)	G-5
2000 Gallon Heavy Duty Grease Trap/Oil Separator (2 Compartment)	G-6
3000 Gallon Heavy Duty Grease Trap/Oil Separator (2 Compartment)	G-7

# PEERLESS CONCRETE PRODUCTS CO.

—SINCE 1959—



PLAN VIEW



SECTION VIEW

## 500 GALLON HEAVY DUTY GREASE TRAP/OIL SEPARATOR (2 COMPARTMENT) (AS BUILT BY PEERLESS)

### NOTES:

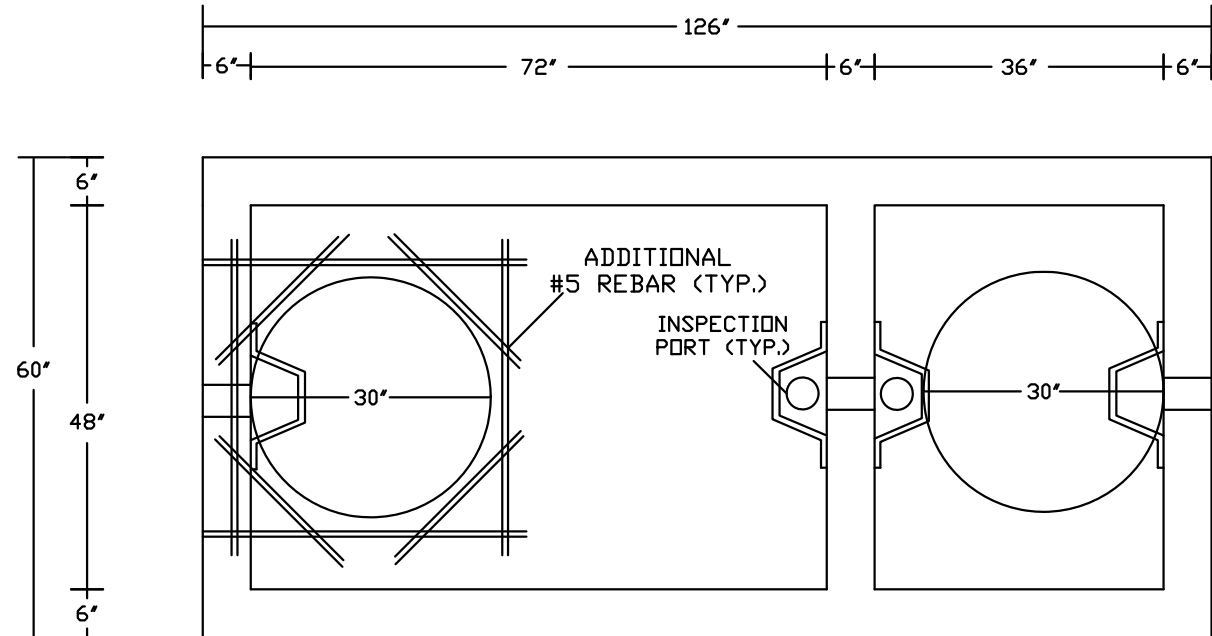
- LOAD RATING: HS-20
- CONCRETE: 4500PSI @ 28 DAYS
- REINFORCING: AS SPECIFIED, GRADE 60 REBAR
- SCALE: 1/2"=1'-0"

- INTERIOR COATED 2 COATS OF APPROPRIATE SEALER
- PLASTIC BAFFLES
- WEIGHT OF TANK BASE: 10,000 LBS.±
- WEIGHT OF LID: 5,000 LBS.±

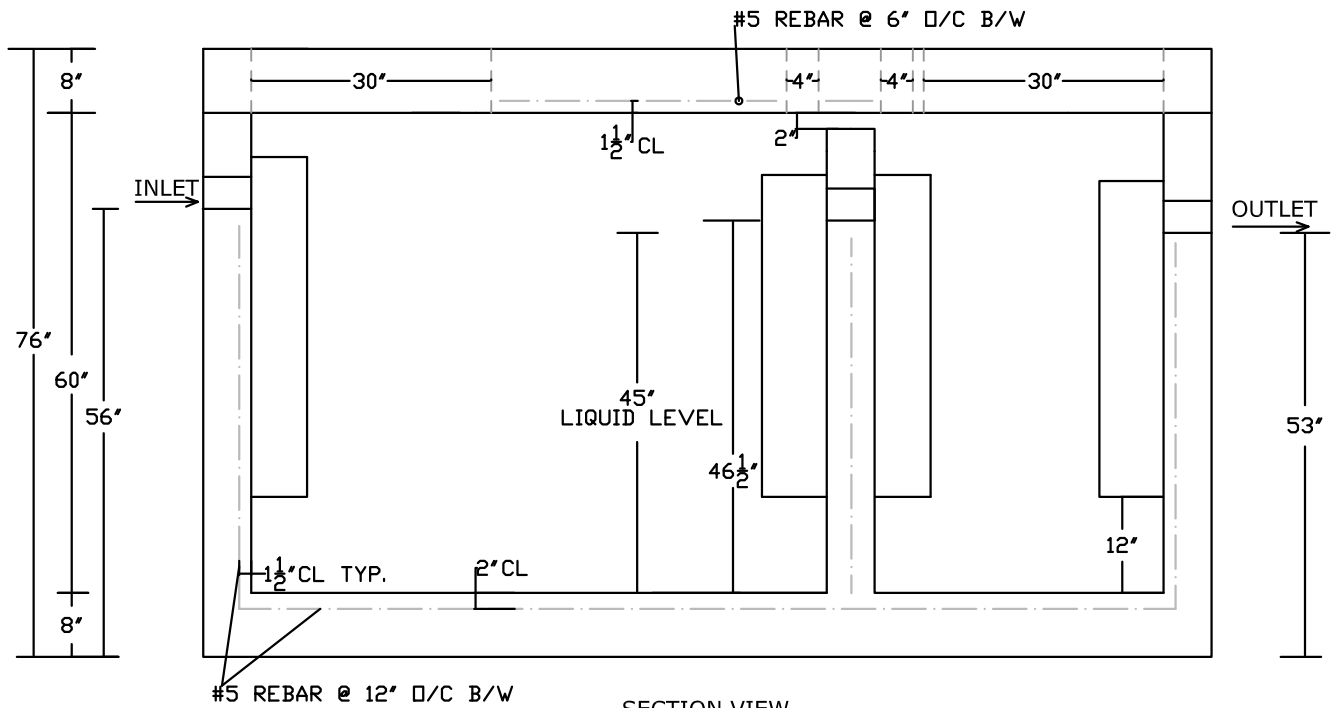
**G-2**

# PEERLESS CONCRETE PRODUCTS CO.

— SINCE 1959 —



PLAN VIEW



SECTION VIEW

## 1000 GALLON HEAVY DUTY GREASE TRAP/OIL SEPARATOR (2 COMPARTMENT) (AS BUILT BY PEERLESS)

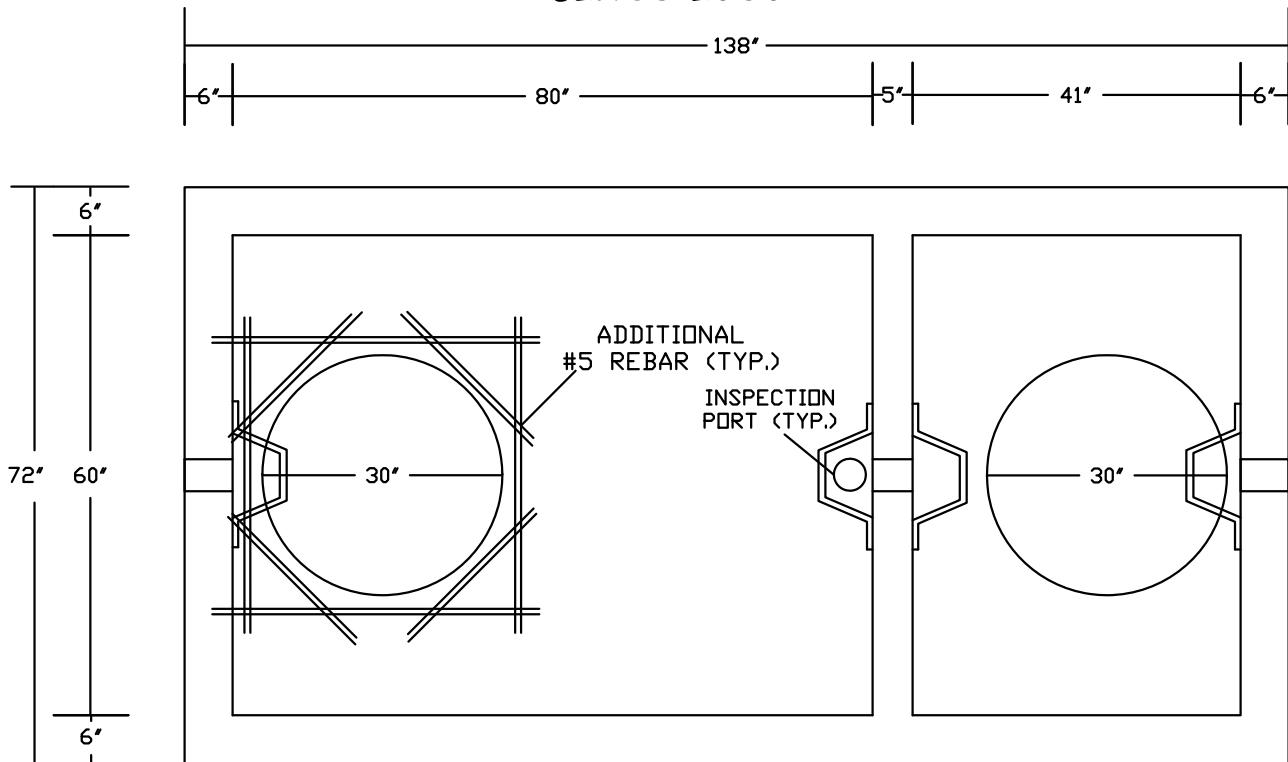
**NOTES:**

- LOAD RATING: HS-20
- CONCRETE: 4500PSI @ 28 DAYS
- REINFORCING: AS SPECIFIED, GRADE 60 REBAR
- SCALE: 1/2"=1'-0"
- INTERIOR COATED 2 COATS OF APPROPRIATE SEALER
- PLASTIC BAFFLES
- WEIGHT OF TANK BASE: 18,000 LBS.±
- WEIGHT OF LID: 5,500 LBS.±

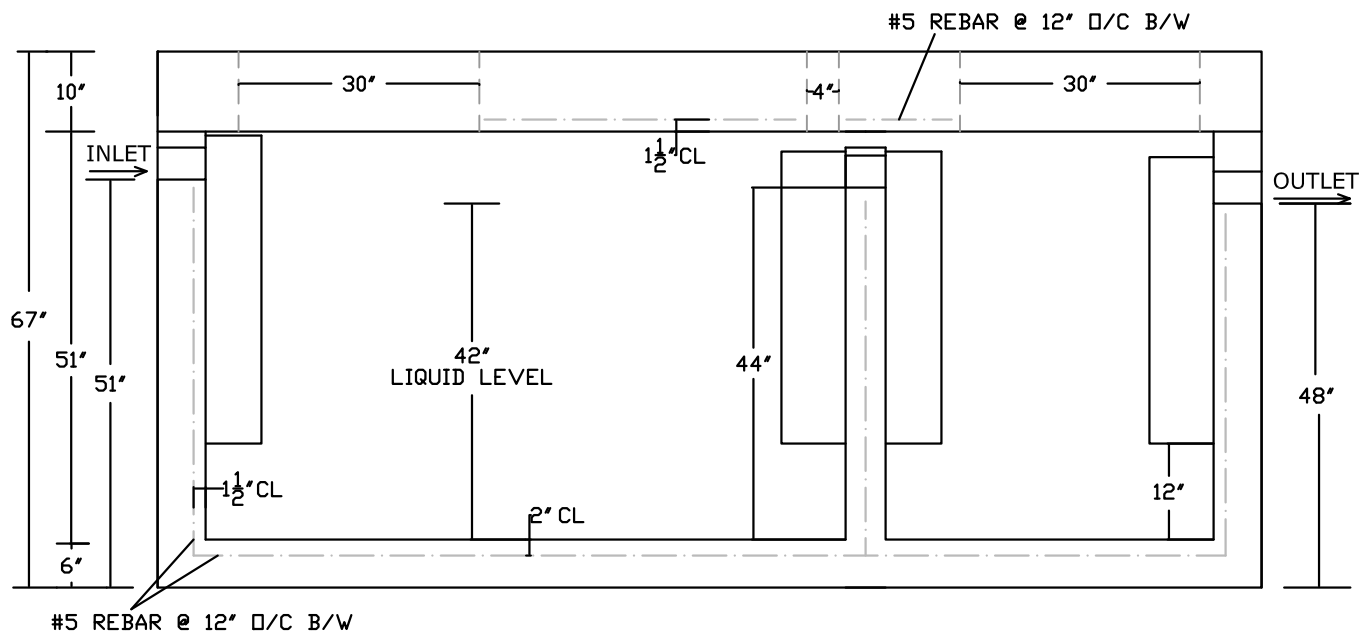
**G-3**

# PEERLESS CONCRETE PRODUCTS CO.

— SINCE 1959 —



PLAN VIEW



SECTION VIEW

## 1250 GALLON HEAVY DUTY GREASE TRAP/OIL SEPARATOR (2 COMPARTMENT) (AS BUILT BY PEERLESS)

**NOTES:**

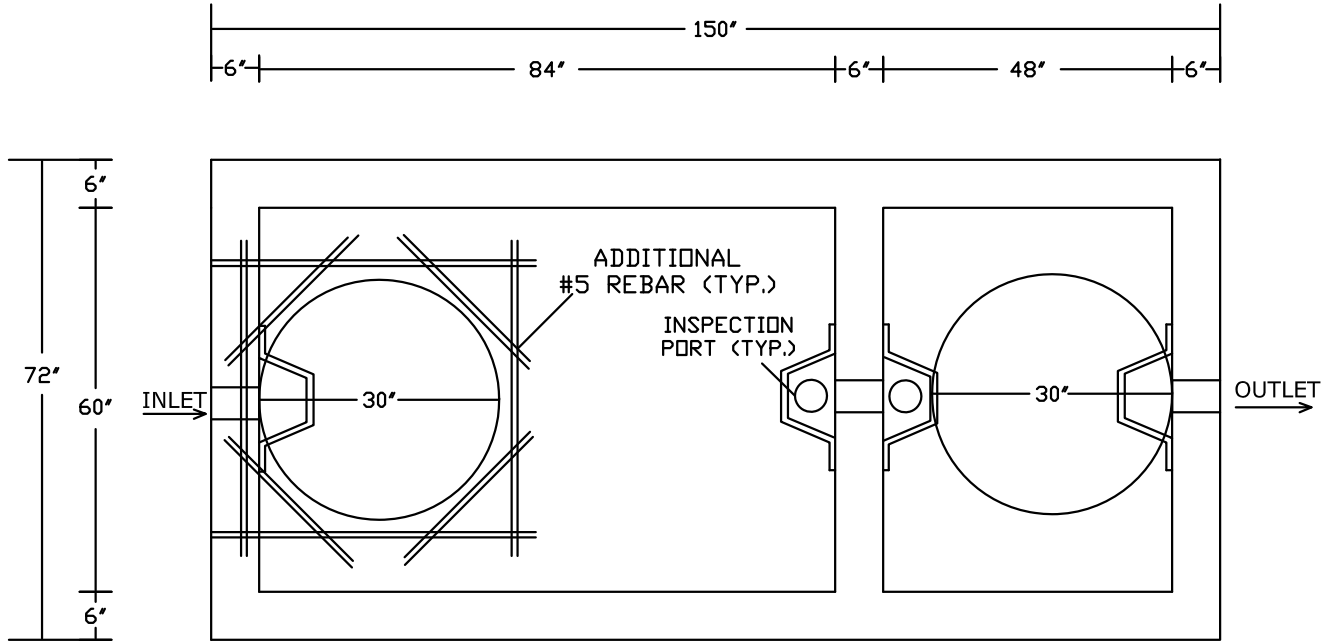
- LOAD RATING: HS-20
- CONCRETE: 4500PSI @ 28 DAYS
- REINFORCING: AS SPECIFIED, GRADE 60 REBAR
- SCALE: 1/2"=1'-0"

- INTERIOR COATING 2 COATS OF APPROPRIATE SEALER
- PLASTIC BAFFLES
- WEIGHT OF TANK BASE: 18,000 LBS. ±
- WEIGHT OF LID: 9,000 LBS. ±

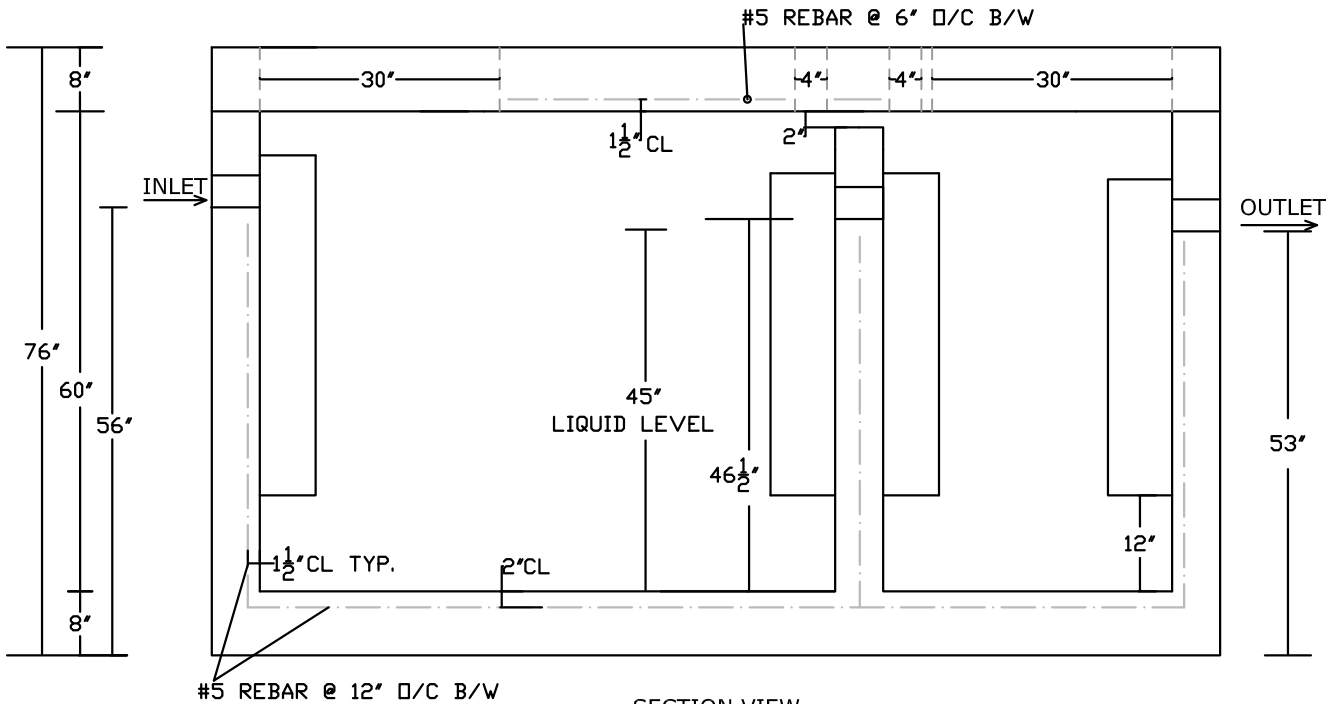
**G-4**

# PEERLESS CONCRETE PRODUCTS CO.

—SINCE 1959—



PLAN VIEW



SECTION VIEW

## 1500 GALLON HEAVY DUTY GREASE TRAP/OIL SEPARATOR (2 COMPARTMENT)

(AS BUILT BY PEERLESS)

NOTES:

- LOAD RATING: HS-20
- CONCRETE: 4500PSI @ 28 DAYS
- REINFORCING: GRADE 60 REBAR
- SCALE: NTS

- INTERIOR COATED 2 COATS OF APPROPRIATE SEALER
- PLASTIC BAFFLES
- WEIGHT OF TANK BASE: 23,000 LBS. ±
- WEIGHT OF LID: 8,000 LBS. ±

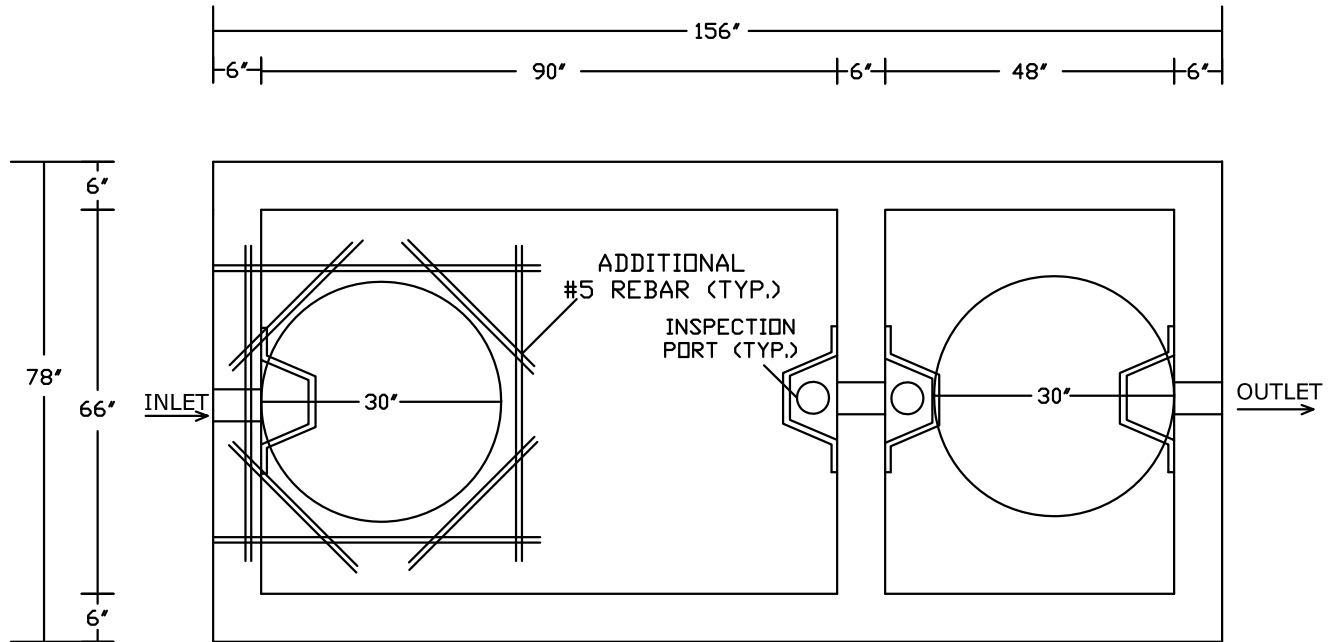
**G-5**

973.838.3060p - [www.peerlessconcrete.com](http://www.peerlessconcrete.com) - 973.838.3385f

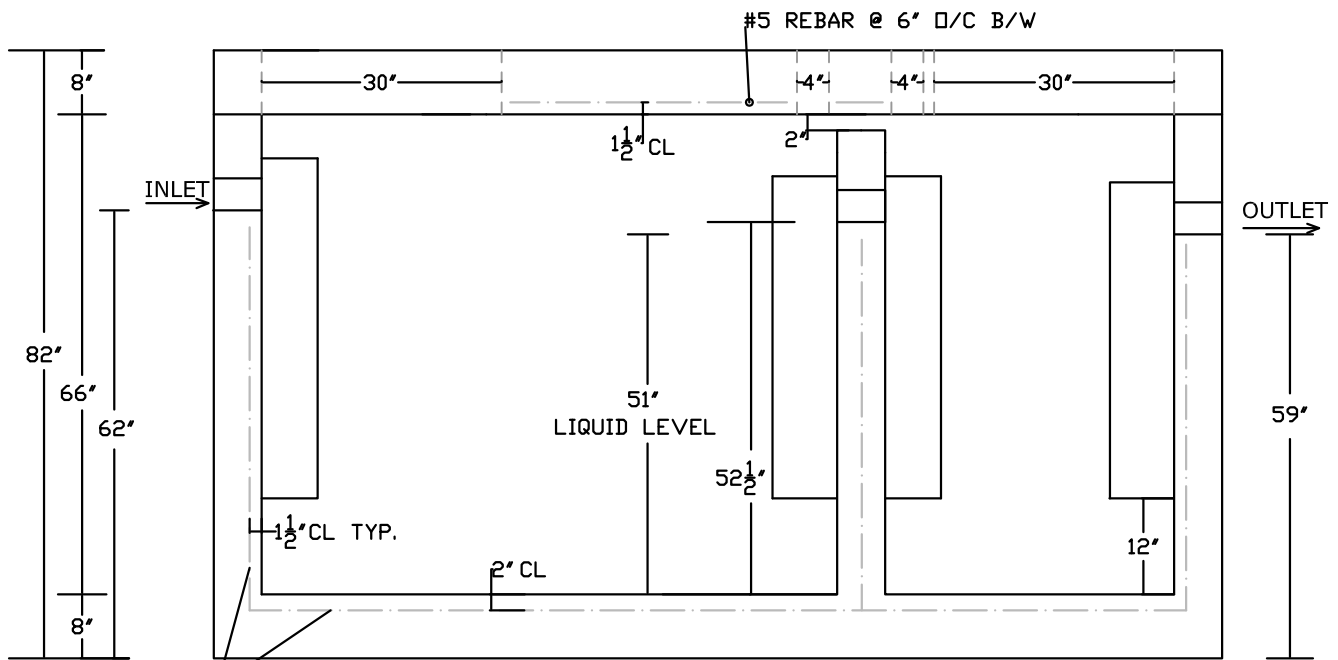
Butler, NJ

# PEERLESS CONCRETE PRODUCTS CO.

—SINCE 1959—



PLAN VIEW



SECTION VIEW

## 2000 GALLON HEAVY DUTY GREASE TRAP/OIL SEPARATOR (2 COMPARTMENT)

(AS BUILT BY PEERLESS)

NOTES:

- LOAD RATING: HS-20
- CONCRETE: 4500PSI @ 28 DAYS
- REINFORCING: GRADE 60 REBAR
- SCALE: NTS

- INTERIOR COATED 2 COATS OF APPROPRIATE SEALER
- PLASTIC BAFFLES
- WEIGHT OF TANK BASE: 26,000 LBS. ±
- WEIGHT OF LID: 9,000 LBS. ±

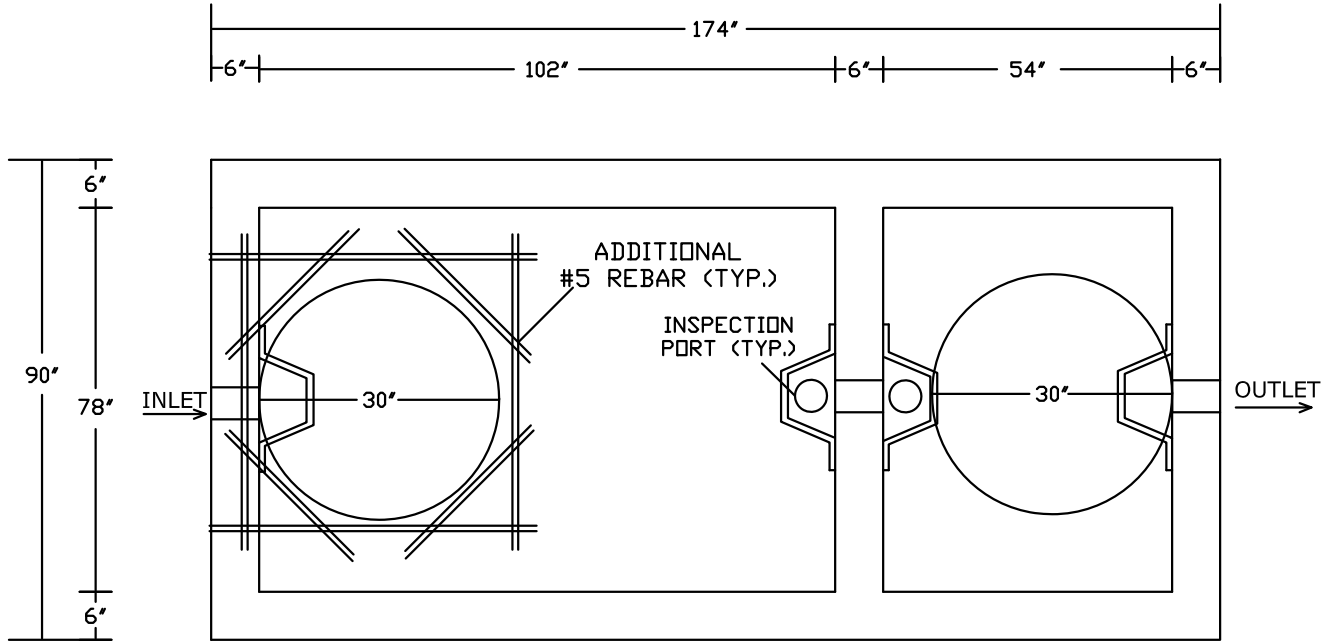
G-6

973.838.3060p - [www.peerlessconcrete.com](http://www.peerlessconcrete.com) - 973.838.3385f

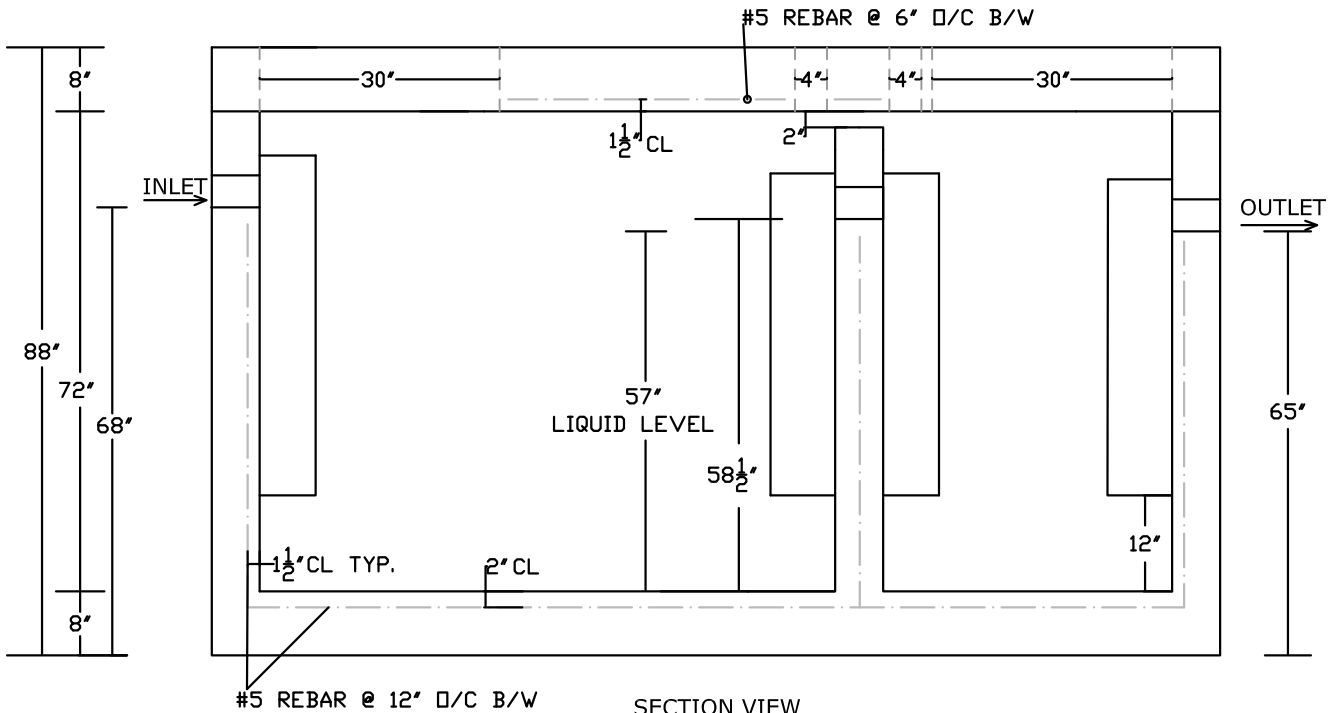
Butler, NJ

# PEERLESS CONCRETE PRODUCTS CO.

—SINCE 1959—



PLAN VIEW



SECTION VIEW

## 3000 GALLON HEAVY DUTY GREASE TRAP/OIL SEPARATOR (2 COMPARTMENT) (AS BUILT BY PEERLESS)

NOTES:

- LOAD RATING: HS-20
- CONCRETE: 4500PSI @ 28 DAYS
- REINFORCING: GRADE 60 REBAR
- SCALE: NTS

- INTERIOR COATED 2 COATS OF APPROPRIATE SEALER
- PLASTIC BAFFLES
- WEIGHT OF TANK BASE: 33,500 LBS. ±
- WEIGHT OF LID: 11,000 LBS. ±

**G-7**